

Supplemental Digital Content 2

Neural Correlates of Wakefulness, Sleep, and General Anesthesia: An Experimental Study in Rat

Abbreviated title: Wakefulness and Unconsciousness

Dinesh Pal, Ph.D.^{1,2}, Brian H. Silverstein, B.A.^{2,3}, Heonsoo Lee, Ph.D.¹, George A. Mashour, M.D., Ph.D.^{1,2,4,*}

¹Department of Anesthesiology, University of Michigan, 7433 Medical Science Building I, 1150 West Medical Center Drive, Ann Arbor, MI 48109-5615

²Center for Consciousness Science, University of Michigan, Ann Arbor, MI 48109

³Translational Neuroscience Program, Wayne State University School of Medicine, Tolan Park Medical Building Suite 5-B, 3901 Chrysler Service Drive, Detroit, MI 48201

⁴Neuroscience Graduate Program, University of Michigan, Ann Arbor, MI 48109

*To whom correspondence should be addressed: gmashour@med.umich.edu

Department of Anesthesiology, University of Michigan Medical School, 1H247 University Hospital, SPC-5048, 1500 E. Medical Center Drive, Ann Arbor, MI 48109-5048

Phone: 1-734-936-4280

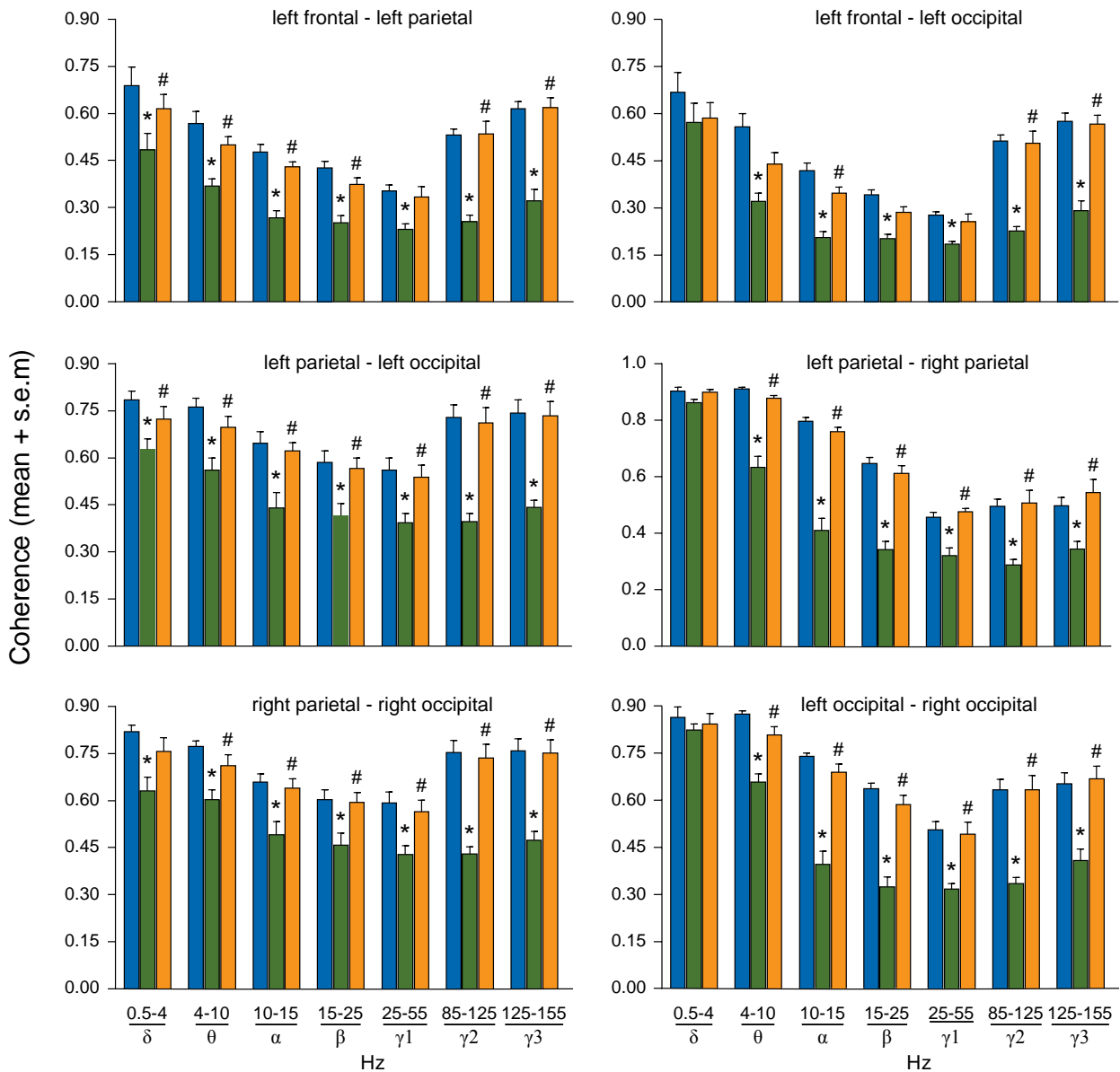
Fax: 1-734-936-9091

Funding: This work was supported by a grant from the National Institutes of Health (Bethesda, MD, USA), to G.A.M (NIH RO1 GM098578) and funding from the Department of Anesthesiology, University of Michigan Medical School, Ann Arbor.

Supplementary Figure 1: Corticocortical coherence in individual channel pairs before, during, and after propofol-induced unconsciousness. The statistical differences are highly significant but in order to keep the plots uncluttered, the significance is reported at an alpha of $p < 0.05$.

*significant as compared to wake, # significant as compared to propofol-induced

unconsciousness, blue bars: wake, green bars: propofol-induced unconsciousness, orange bars: post-propofol recovery wake, s.e.m.: standard error of the mean.



Supplementary Figure 1

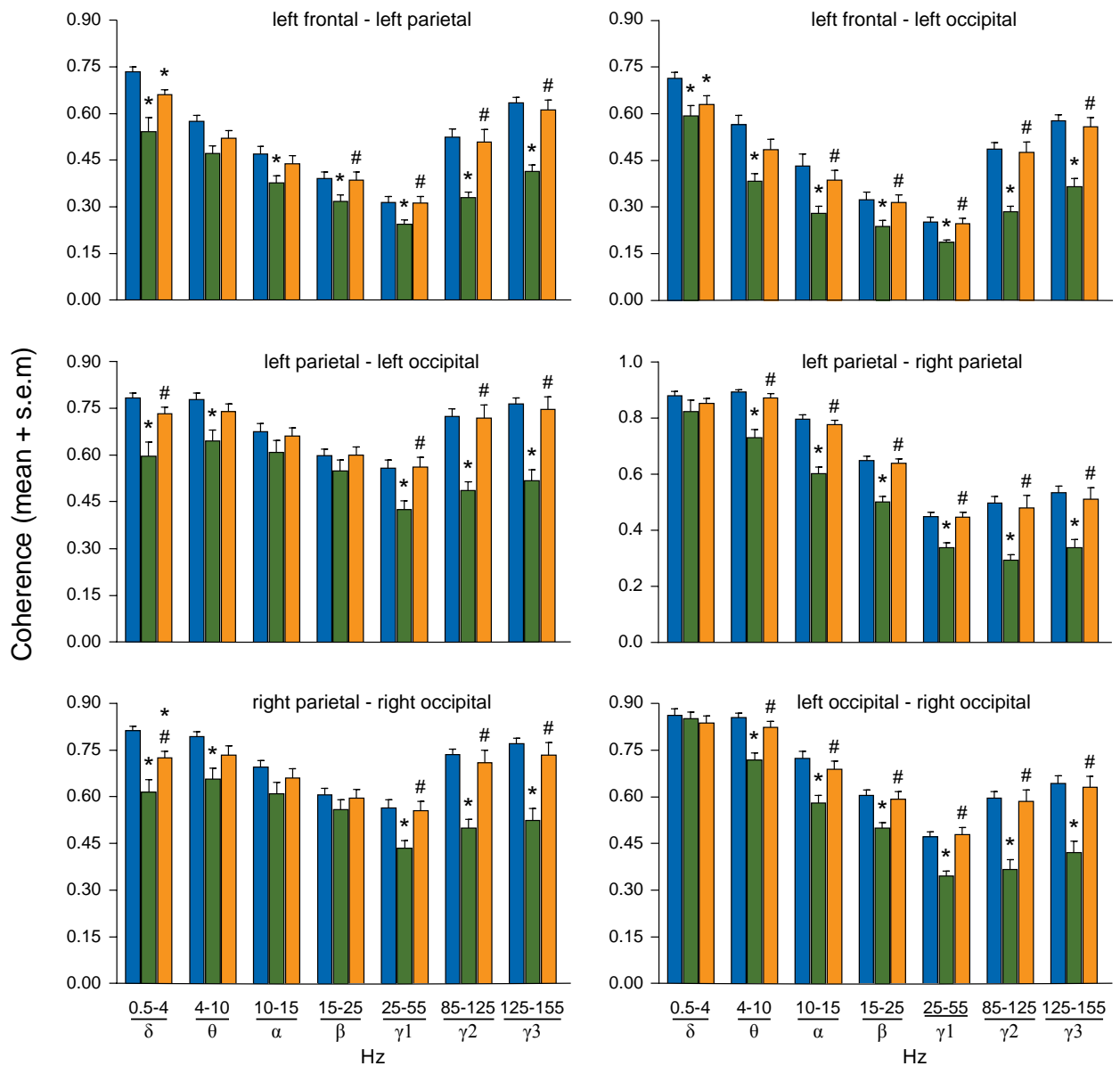
Supplementary Figure 2: Corticocortical coherence in individual channel pairs before, during, and after sevoflurane-induced unconsciousness. The statistical differences are highly significant

but in order to keep the plots uncluttered, the significance is reported at an alpha of $p < 0.05$.

*significant as compared to wake, # significant as compared to sevoflurane-induced

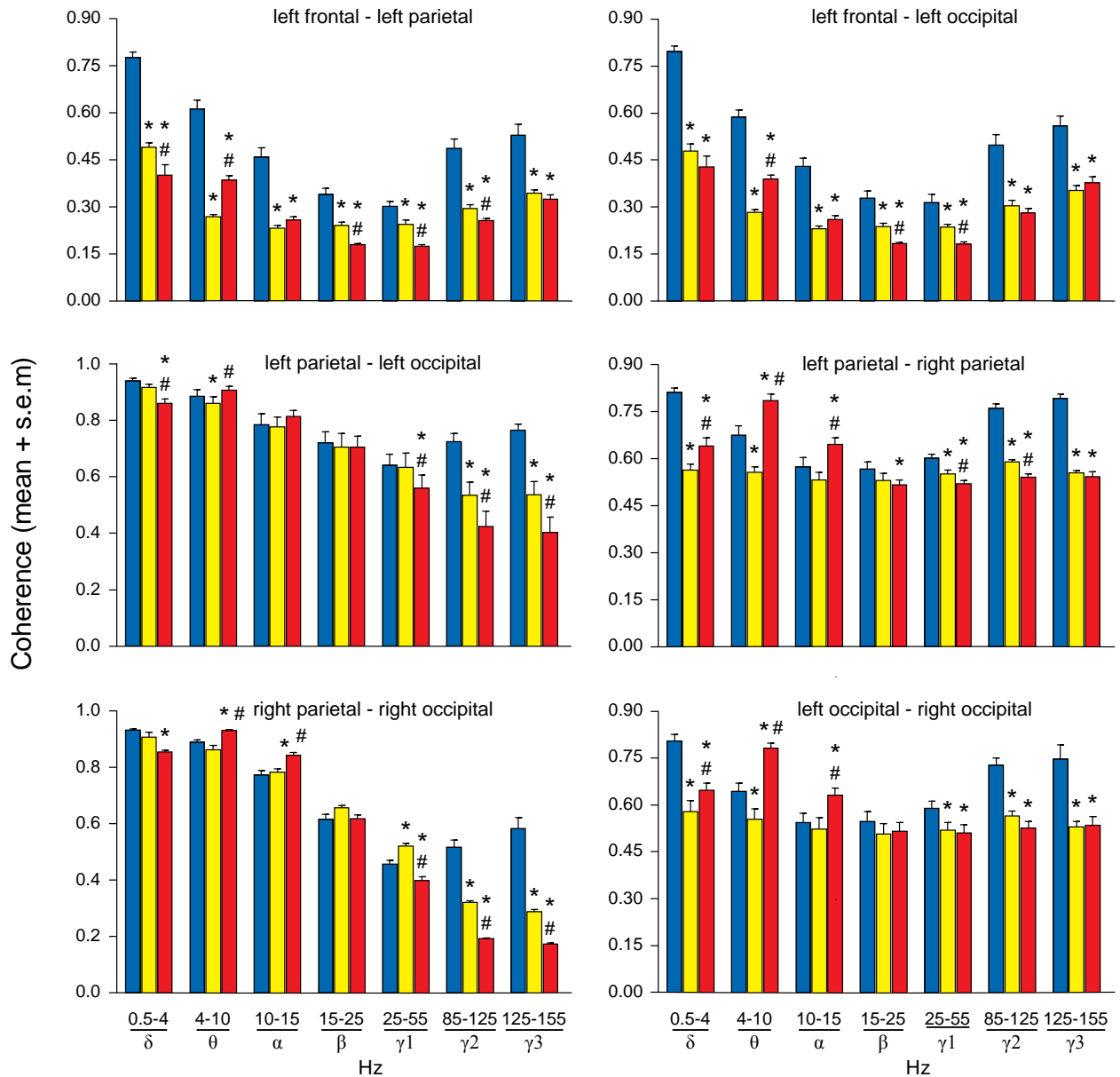
unconsciousness, blue bars: wake, green bars: sevoflurane-induced unconsciousness, orange

bars: post-sevoflurane recovery wake, s.e.m.: standard error of the mean.



Supplementary Figure 2

Supplementary Figure 3: Corticocortical coherence in individual channel pairs during sleep-wake states. The statistical differences are highly significant but in order to keep the plots uncluttered, the significance is reported at an alpha of $p < 0.05$. *significant as compared to wake, # significant as compared to slow wave sleep, blue bars: wake, yellow bars: slow wave sleep, red bars: rapid eye movement sleep, s.e.m.: standard error of the mean.



Supplementary Figure 3