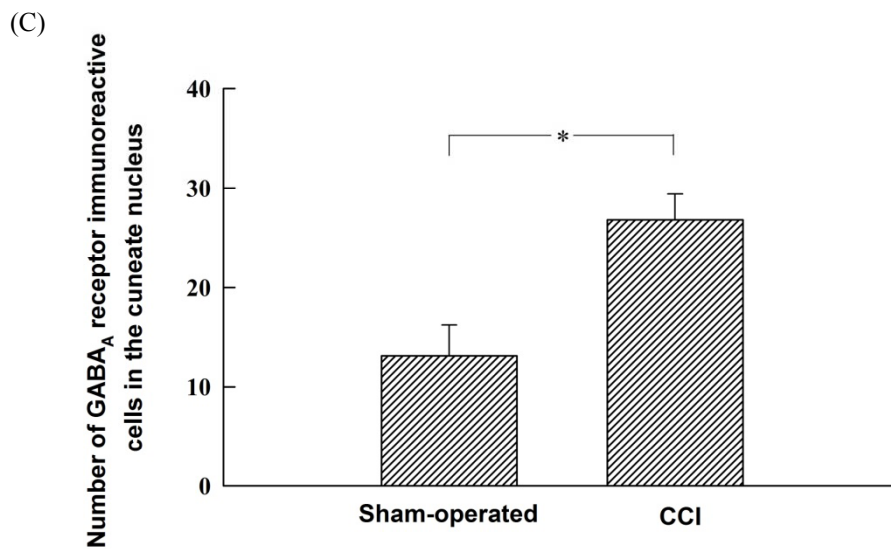
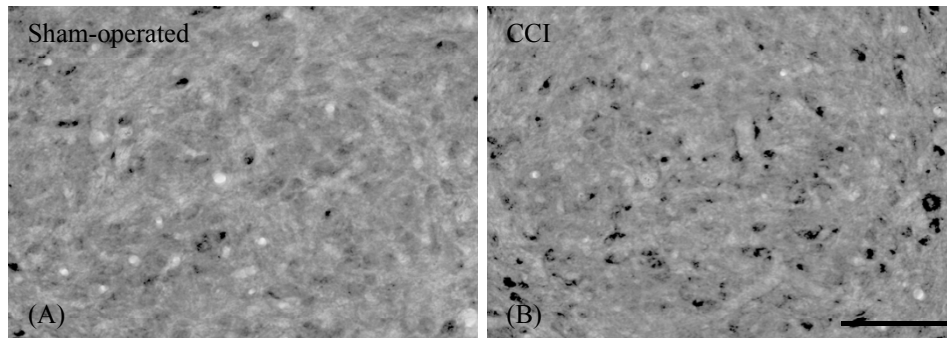


Supplemental Digital Content 2



The γ -aminobutyric acid type A (GABA_A) receptor immunoreactivity in the cuneate nucleus (CN) 7 days after chronic constriction injury (CCI). (A-B) In the ipsilateral CN of sham-operated rats and of rats at day 7 post-CCI, GABA_A receptor immunoreactivity was detected. (C) Quantitative analysis revealed that the number of GABA_A receptor immunoreactive cells in the CN of CCI rats was significantly larger than that of sham-operated rats (* $P < 0.05$). Error bars represent mean \pm SD. $n = 6$ rats per group. Bar = 100 μ m.