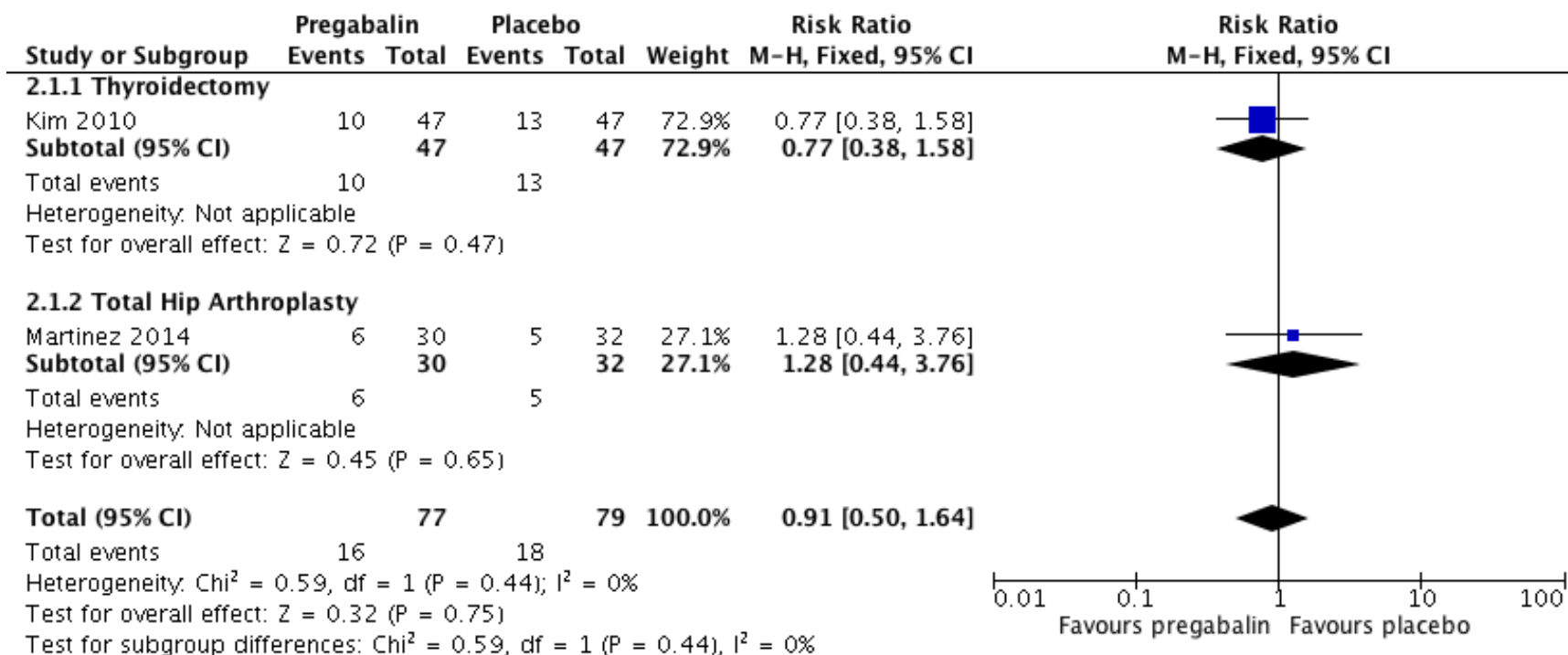


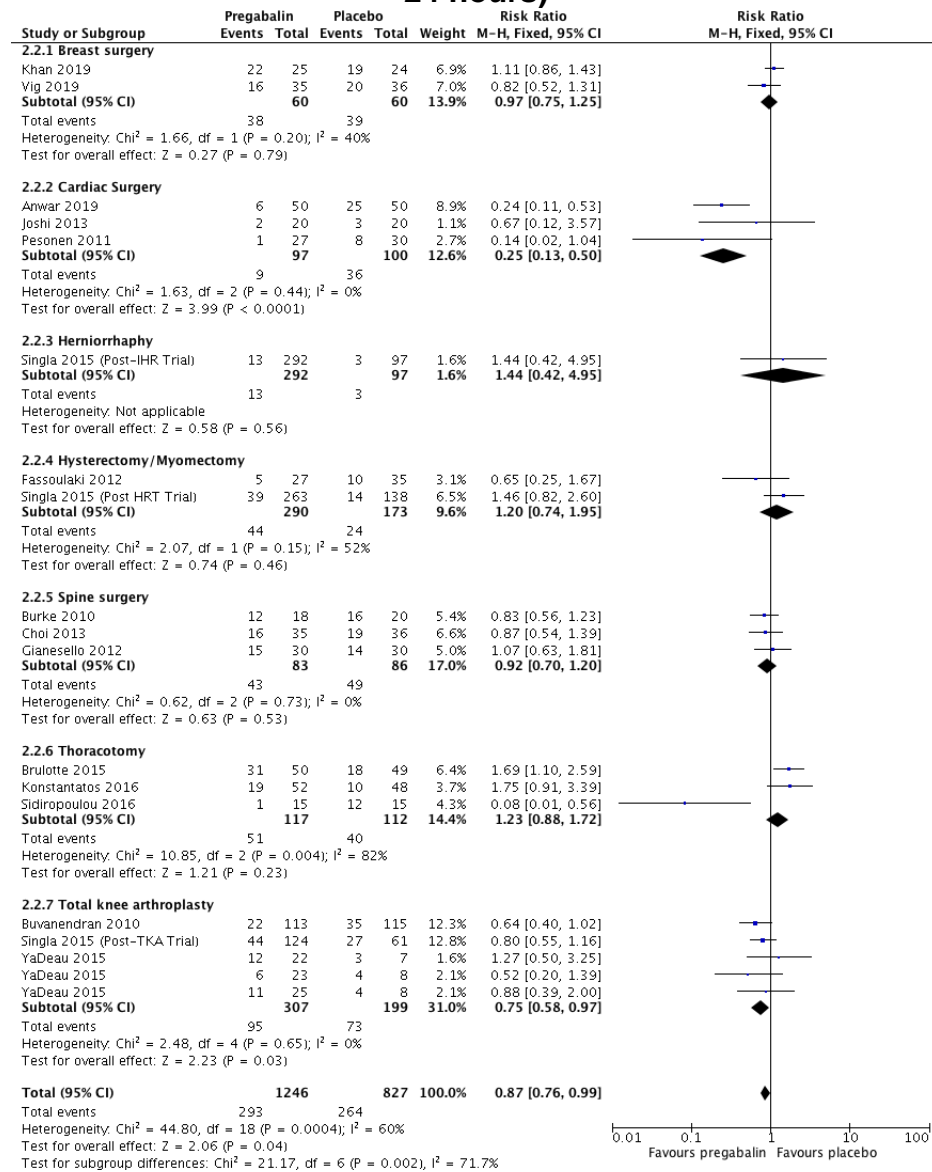
Appendix G: Pregabalin Meta-analyses

Outcome and subgroup	Studies	Participants	I ²	Risk Ratio (M-H, Fixed, 95% CI)	Risk Ratio (M-H, Random, 95% CI)
2.1 Prevalence of any pain at 3 mo., drug ≤24h, mixed surgical procedures	2	156	0	0.91 [0.50, 1.64]	0.90 [0.49, 1.64]
2.2 Prevalence of any pain at 3 mo., drug >24h, mixed surgical procedures	17	2073	60	0.87 [0.76, 0.99]	0.88 [0.70, 1.10]
2.3 Prevalence of moderate/severe pain at 3 mo., drug >24h, mixed surgical procedures	9	841	0	0.47 [0.33, 0.68]	0.51 [0.35, 0.75]
2.4 Prevalence of any pain at 6 mo., drug >24h, mixed surgical procedures	6	856	69	0.73 [0.57, 0.94]	0.78 [0.47, 1.28]
2.5 Prevalence of moderate/severe pain at 6 mo., drug >24h, mixed surgical procedures	3	397	0	0.29 [0.14, 0.58]	0.30 [0.15, 0.61]
2.6 Prevalence of any pain at 12 mo., drug >24h, mixed surgical procedures	2	130	0	0.65 [0.29, 1.48]	0.65 [0.29, 1.47]
2.7 Prevalence of any pain at 3 mo., abdominal/pelvic surgery	2	463	52	1.20 [0.74, 1.95]	1.07 [0.49, 2.32]
2.8 Prevalence of any pain at 6 mo., abdominal/pelvic surgery	2	336	0	1.48 [0.68, 3.21]	1.48 [0.68, 3.21]
2.9 Prevalence of any pain at 3 mo., breast surgery	2	120	40	0.97 [0.75, 1.25]	1.01 [0.73, 1.39]
2.10 Prevalence of moderate/severe pain at 3 mo., breast surgery	2	120	0	0.63 [0.31, 1.27]	0.63 [0.31, 1.27]
2.11 Prevalence of any pain at 3 mo., cardiac surgery	3	197	0	0.25 [0.13, 0.50]	0.27 [0.14, 0.53]
2.12 Prevalence of any pain at 3 mo., spine surgery	3	169	0	0.92 [0.70, 1.20]	0.90 [0.69, 1.17]
2.13 Prevalence of any pain at 3 mo., thoracotomy	3	229	82	1.23 [0.88, 1.72]	0.99 [0.34, 2.83]
2.14 Prevalence of moderate/severe pain at 3 mo., thoracotomy	3	229	27	0.64 [0.29, 1.39]	0.69 [0.22, 2.14]
2.15 Prevalence of any pain at 3 mo., total knee arthroplasty,	3	506	0	0.75 [0.58, 0.97]	0.76 [0.59, 0.98]
2.16 Prevalence of moderate/severe pain at 3 mo., total knee arthroplasty	2	321	0	0.42 [0.22, 0.81]	0.42 [0.22, 0.82]
2.17 Prevalence of any pain at 6 mo., total knee arthroplasty	2	351	61	0.70 [0.46, 1.06]	0.73 [0.37, 1.45]

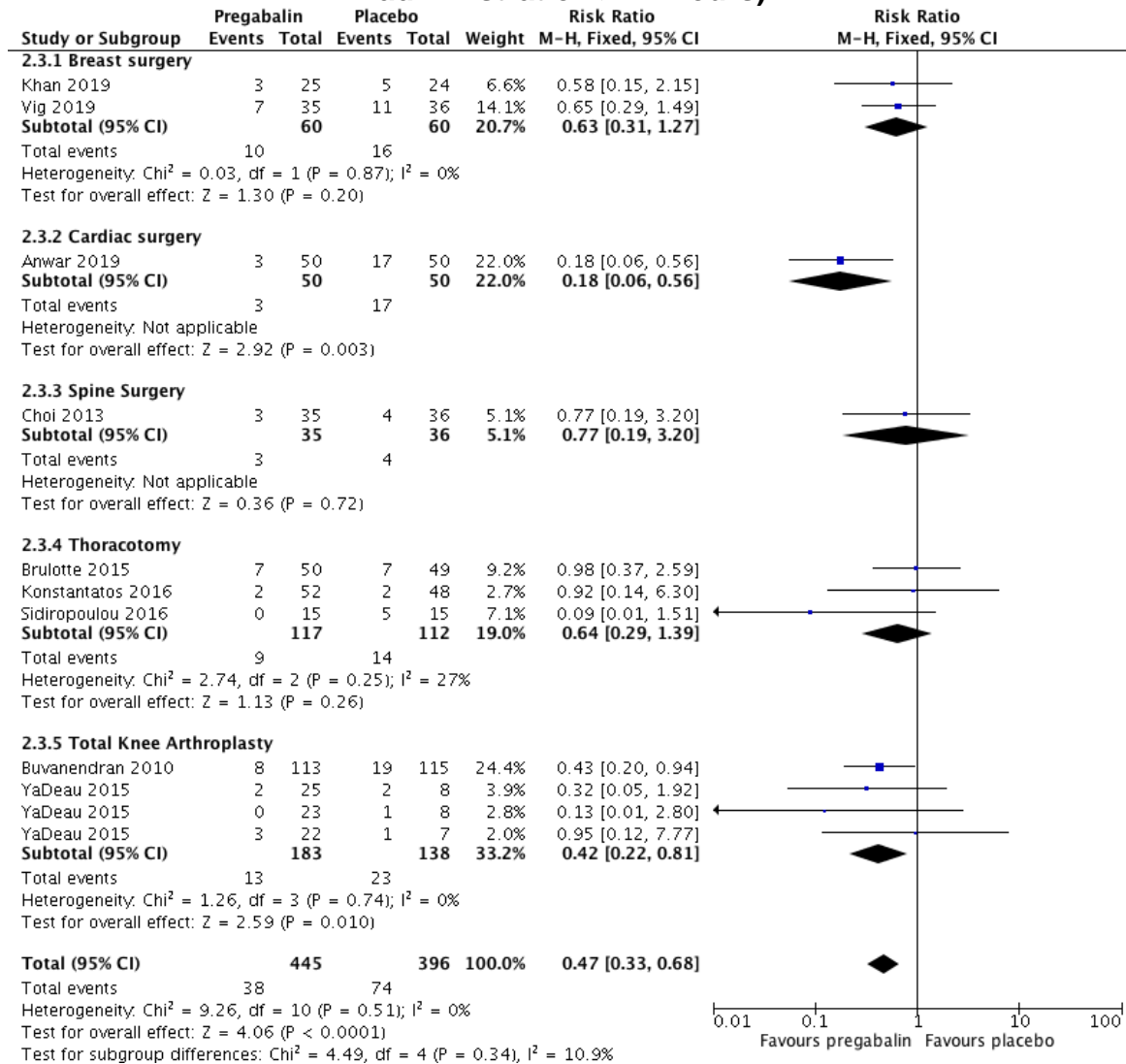
Analysis 2.1. Pregabalin versus placebo comparisons, prevalence of any pain at 3 months (drug administration ≤ 24 hours)



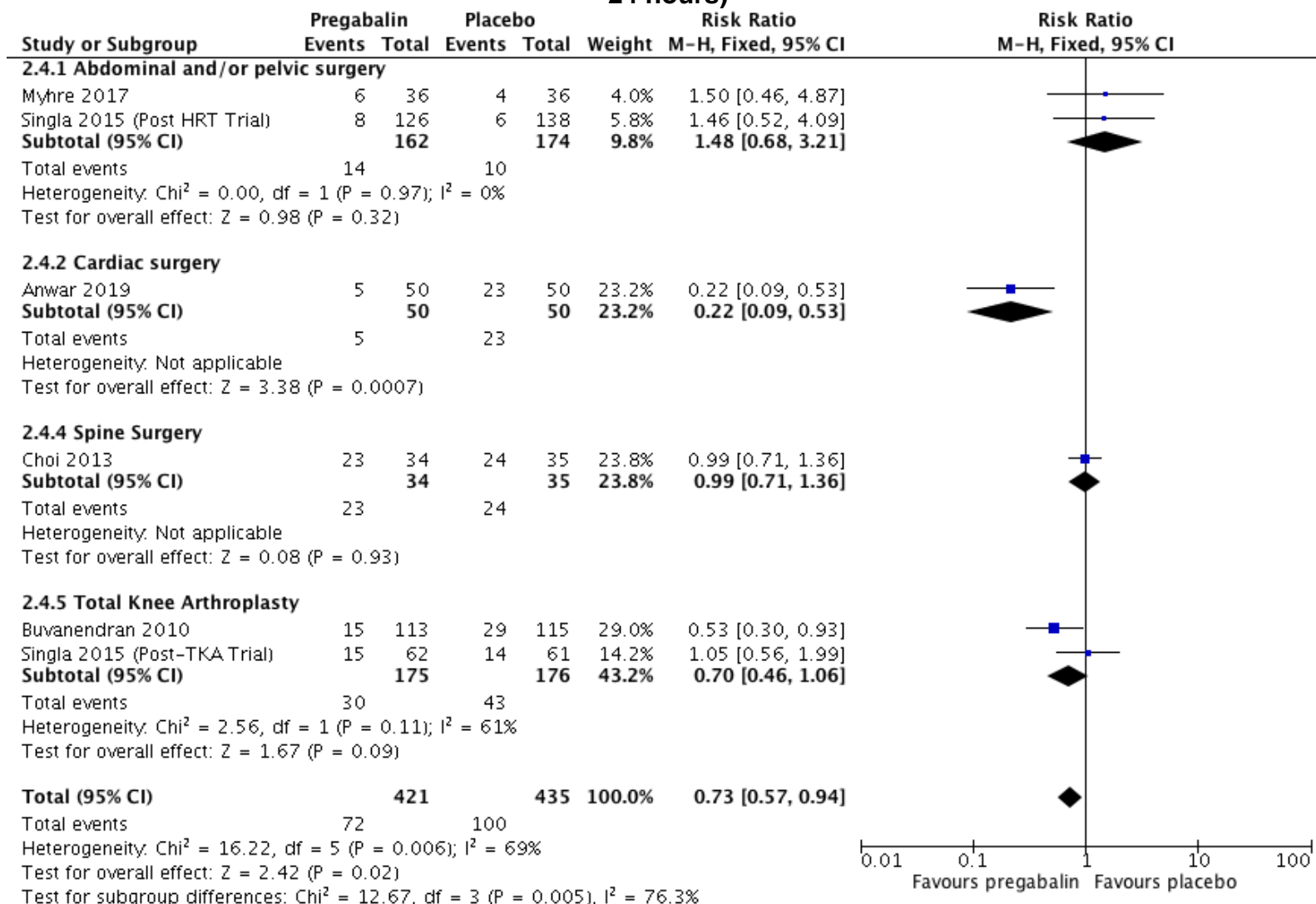
Analysis 2.2. Pregabalin versus placebo comparisons, prevalence of any pain at 3 months (drug administration > 24 hours)



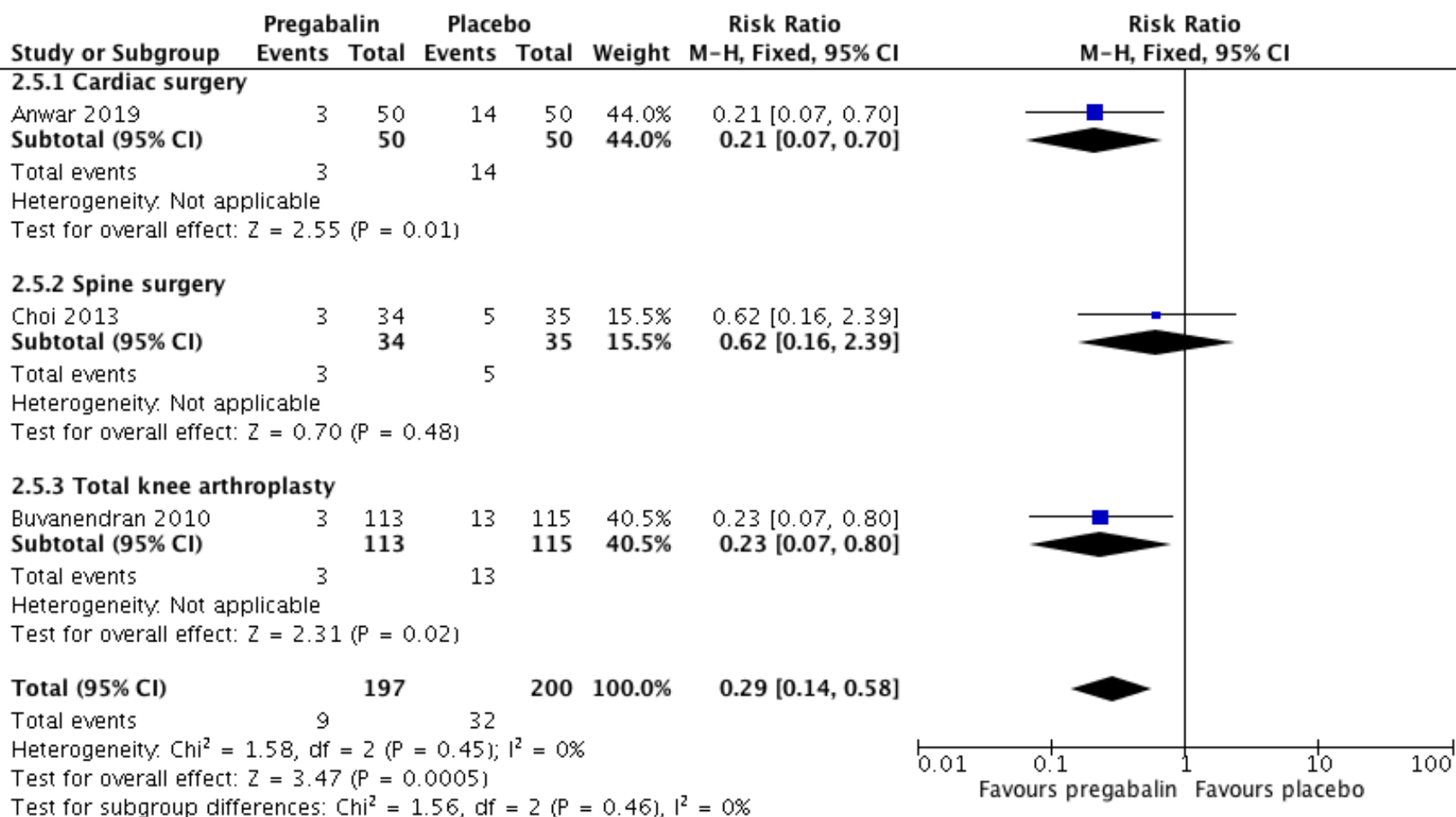
Analysis 2.3. Pregabalin versus placebo comparisons, prevalence of moderate/severe pain at 3 months (drug administration > 24 hours)



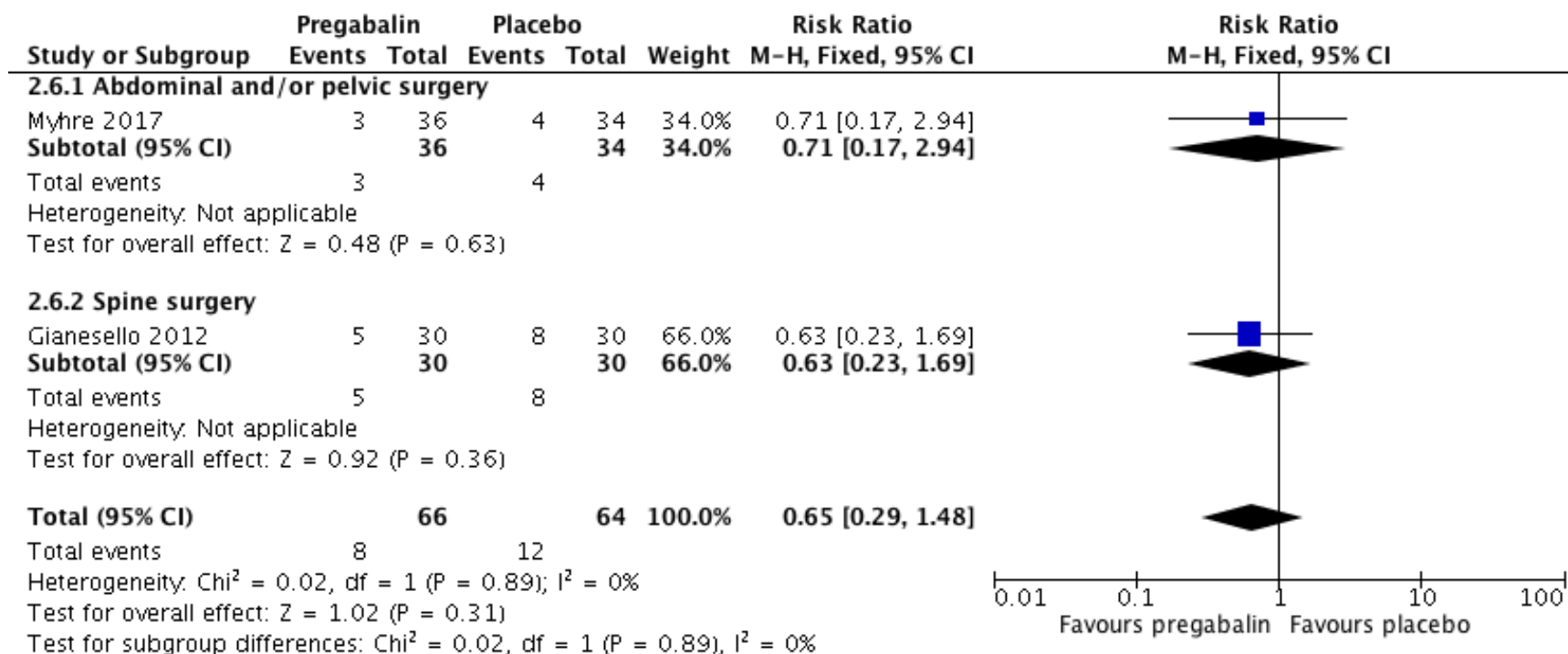
Analysis 2.4. Pregabalin versus placebo comparisons, prevalence of any pain at 6 months (drug administration > 24 hours)



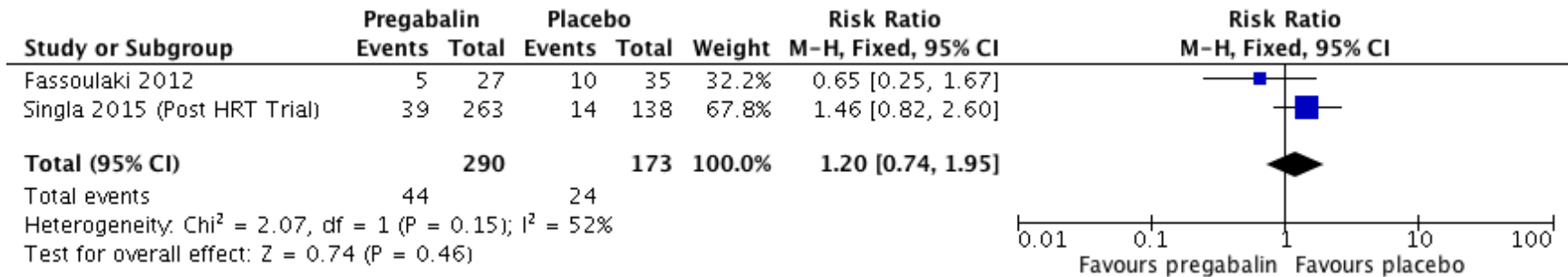
Analysis 2.5. Pregabalin versus placebo comparisons, prevalence of moderate/severe pain at 6 months (drug administration > 24 hours)



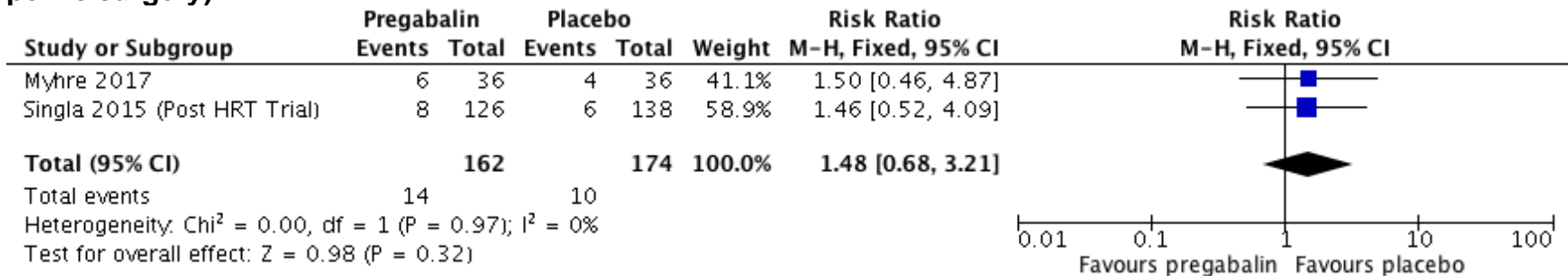
Analysis 2.6. Pregabalin versus placebo comparisons, prevalence of any pain at 12 months (drug administration > 24 hours)



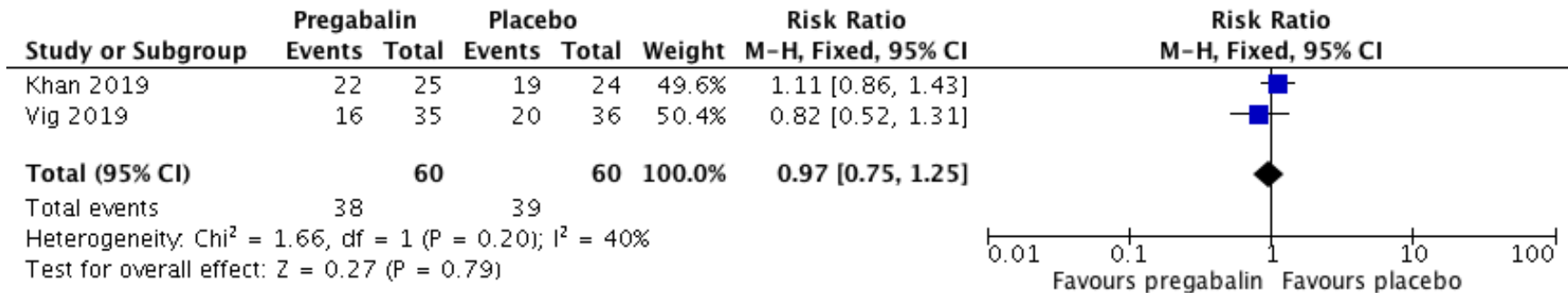
Analysis 2.7. Pregabalin versus placebo comparisons, prevalence of any pain at 3 months (abdominal and/or pelvic surgery)



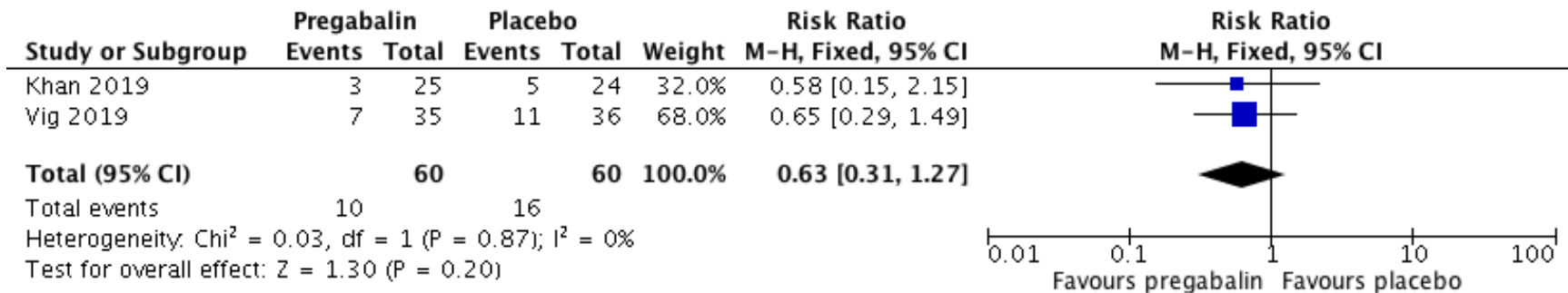
Analysis 2.8. Pregabalin versus placebo comparisons, prevalence of any pain at 6 months (abdominal and/or pelvic surgery)



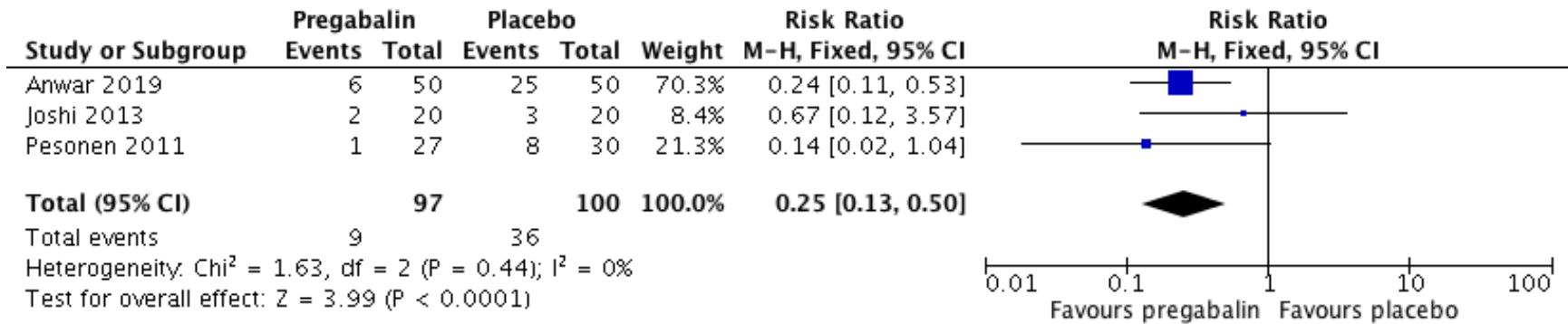
Analysis 2.9. Pregabalin versus placebo comparisons, prevalence of any pain at 3 months (breast surgery)



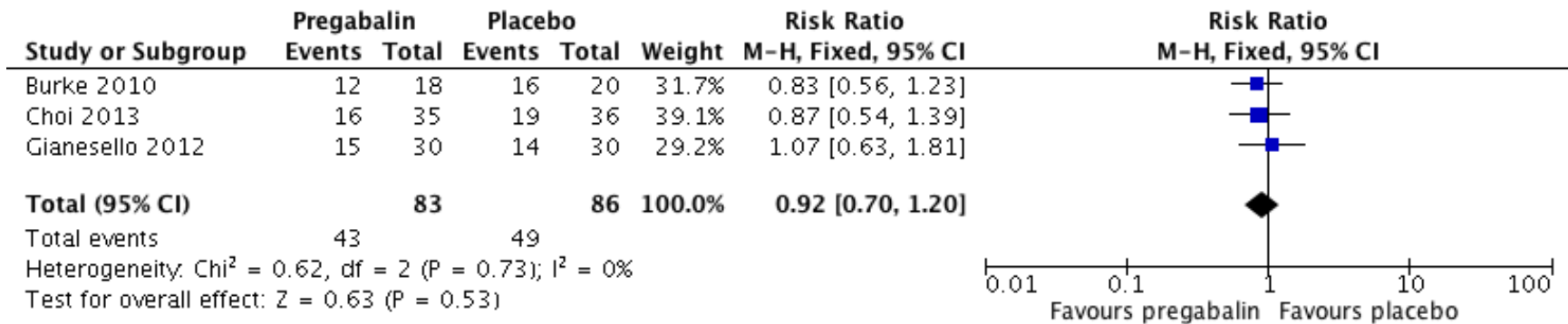
Analysis 2.10. Pregabalin versus placebo comparisons, prevalence of moderate/severe pain at 3 months (breast surgery)



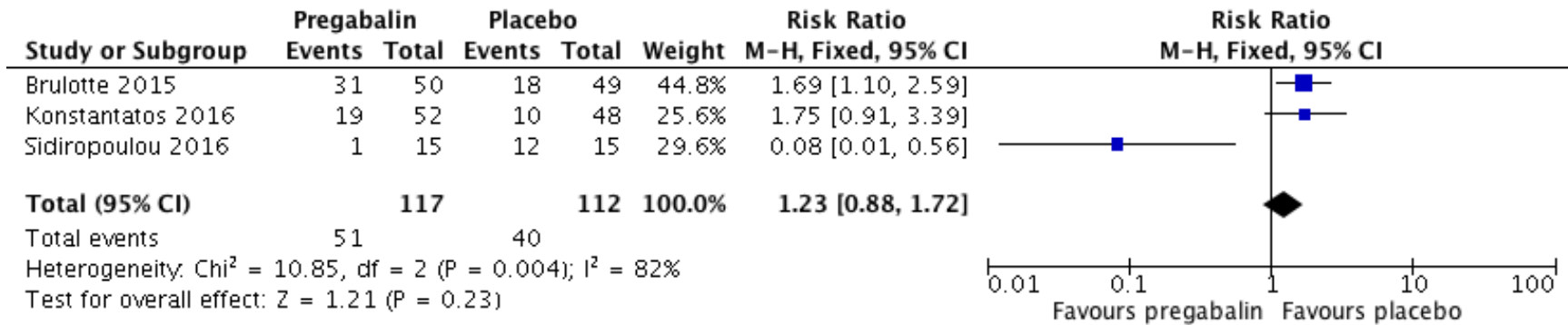
Analysis 2.11. Pregabalin versus placebo comparisons, prevalence of any pain at 3 months (cardiac surgery)



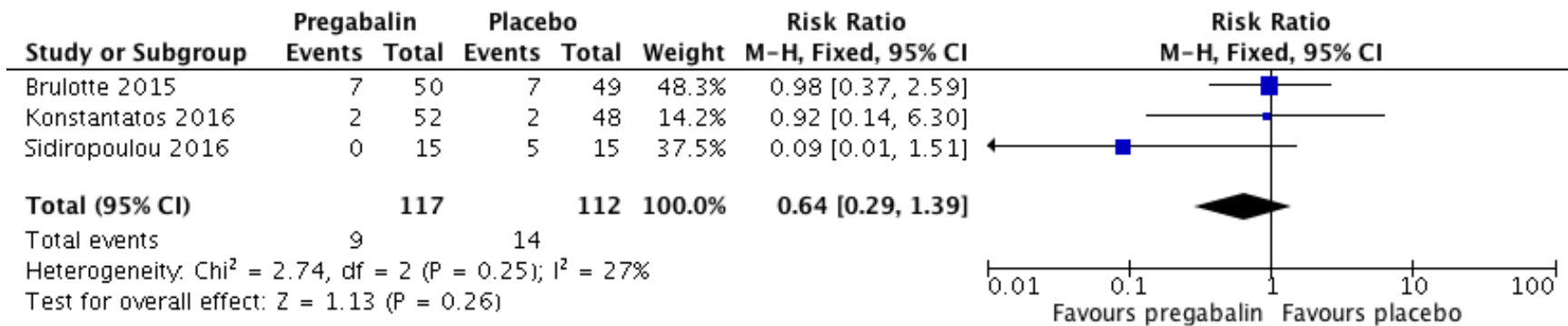
Analysis 2.12. Pregabalin versus placebo comparisons, prevalence of any pain at 3 months (spine surgery)



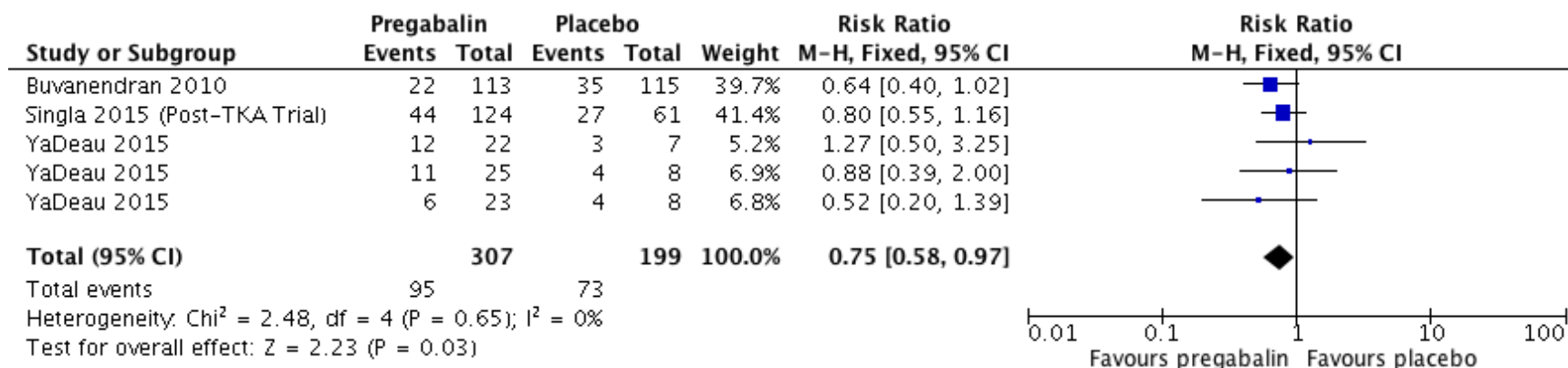
Analysis 2.13. Pregabalin versus placebo comparisons, prevalence of any pain at 3 months (thoracotomy)



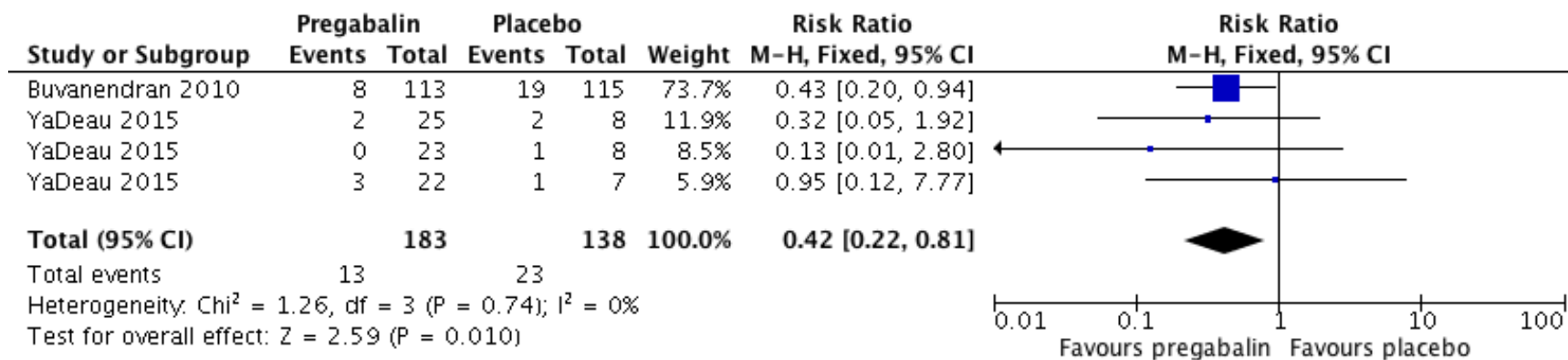
Analysis 2.14. Pregabalin versus placebo comparisons, prevalence of moderate/severe pain at 3 months (thoracotomy)



Analysis 2.15. Pregabalin versus placebo comparisons, prevalence of any pain at 3 months (total knee arthroplasty)



Analysis 2.16. Pregabalin versus placebo comparisons, prevalence of moderate/severe pain at 3 months (total knee arthroplasty)



Analysis 2.17. Pregabalin versus placebo comparisons, prevalence of any pain at 6 months (total knee arthroplasty)

