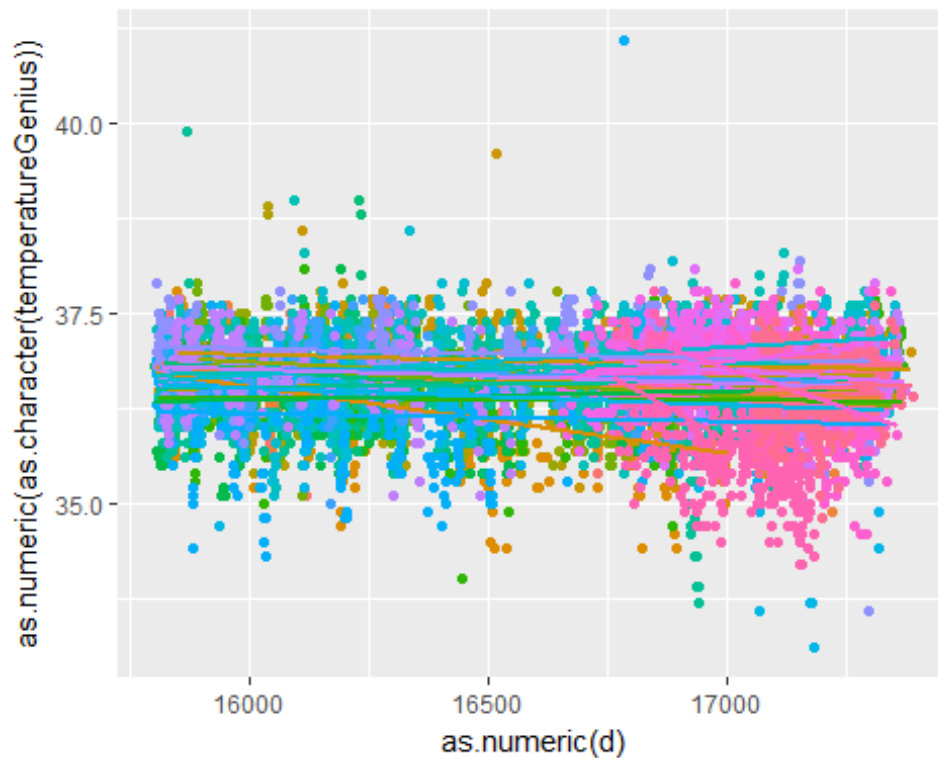


Appendix 7. Sensor Performance Over Time

Genius thermometer devices

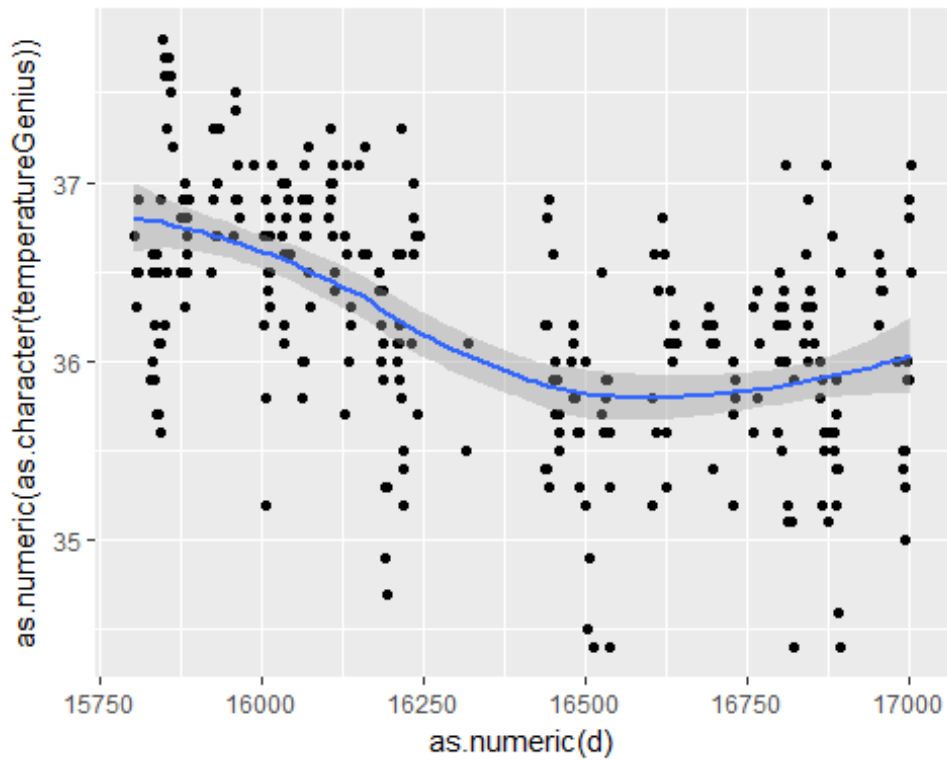
We included all measurements in order to generate a larger sample size for each thermometer.

Figure A7.1: device drift for all Genius thermometers (with at least 200 measurements) with a linear fit superimposed.



We investigated obvious outliers with steep slopes individually (e.g. thermometer N12575255), in figure A7.2.

Figure A7.2: device drift for all Genius thermometer N12575255



Green LJ, Mackillop LH, Salvi D, Pullon R, Loerup L, Mossop J et al. Gestation-specific vital sign reference ranges in pregnancy. *Obstet Gynecol* 2020;135.

The authors provided this information as a supplement to their article.

©2020 American College of Obstetricians and Gynecologists.

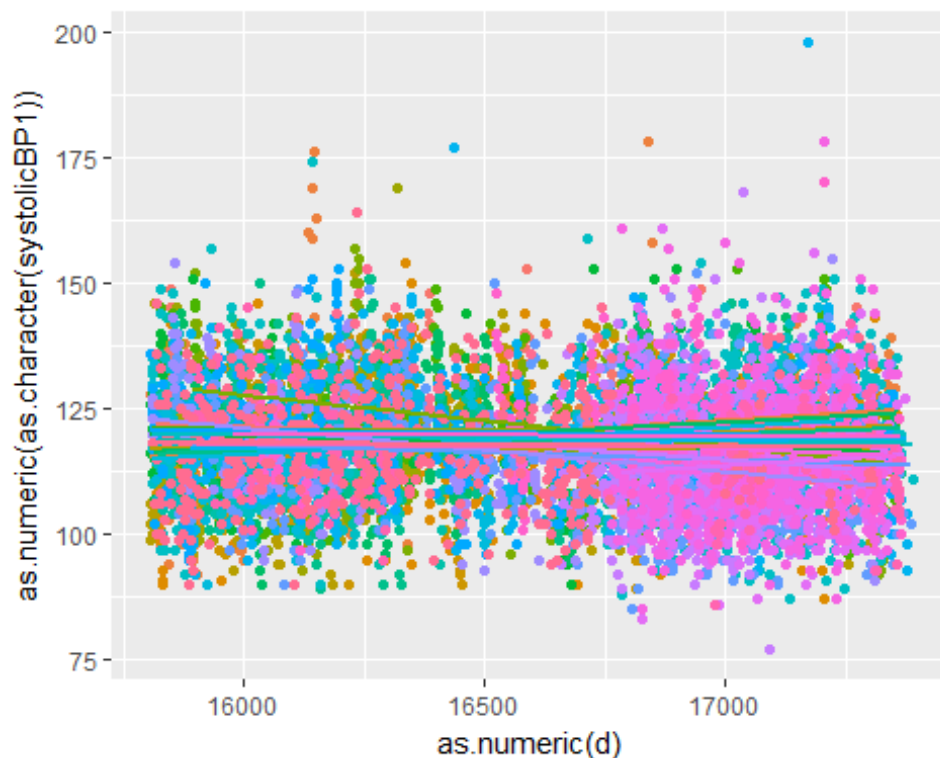
Figure A7.3: device drift for individual Genius thermometers



Automated blood pressure monitor devices

Figure A7.4 shows all automated BP monitors with at least 200 measurements (Microlife 3BT0-A(2)/WatchBP Home, Microlife, Taipei, Taiwan), with a linear fit superimposed

Figure A7.4: device drift for all automated BP monitors (with at least 200 measurements) with a linear fit superimposed.



We investigated obvious outliers with steep slopes individually (e.g. BP monitor 12700427), in figure A7.5.

Figure A7.5: device drift for automated BP monitor 12700427

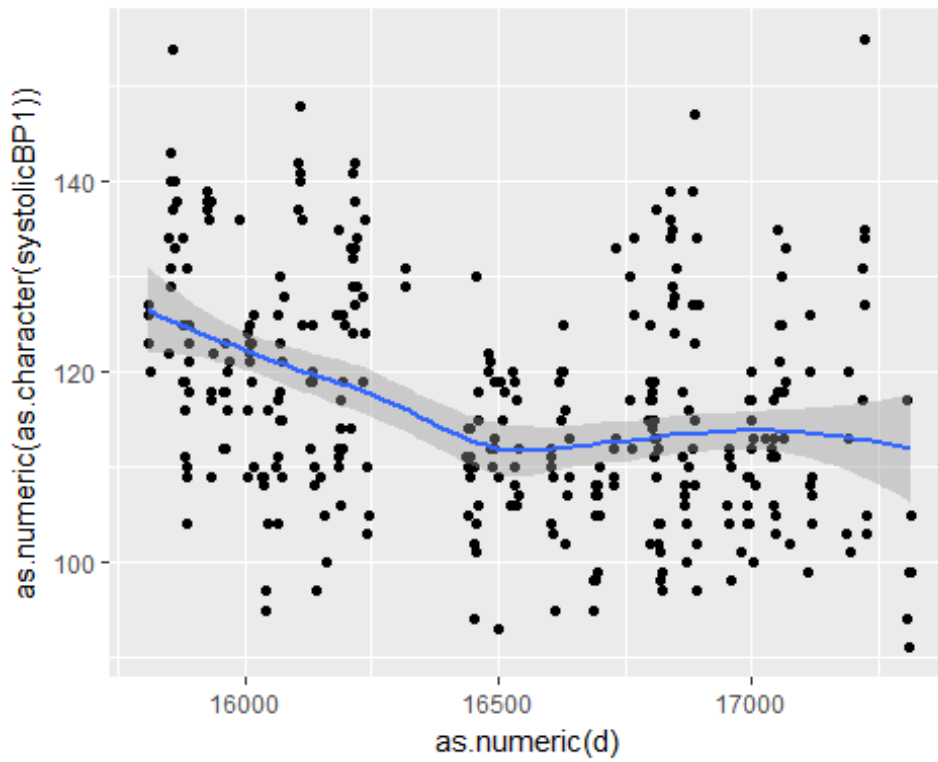


Figure A7.6: device drift for individual automated BP monitors



Pulse oximeter devices

Figure A7.7 shows all pulse oximeters with at least 100 measurements (WristOx2 3150, Nonin Medical, Minnesota, USA), with a linear fit superimposed.

Figure A7.7: device drift for all pulse oximeters (with at least 200 measurements) with a linear fit superimposed

