

**Appendix 1. Model Performance Comparing Different Definitions of Inpatient Opioid Use and Depression**

Model	LR <sup>5</sup> $\chi^2$	C-index <sup>6</sup>	Somer's D <sub>xy</sub>
Depression or anxiety, all sources <sup>1</sup> + MME per hour <sup>2</sup>	157.07	0.743	0.486
Depression or anxiety, EHR only <sup>3</sup> + MME per hour	153.01	0.739	0.477
Depression or anxiety, all sources + MME in prior 24 hours <sup>4</sup>	163.98	0.755	0.510
Depression or anxiety, EHR only + MME in prior 24 ours	159.50	0.751	0.503

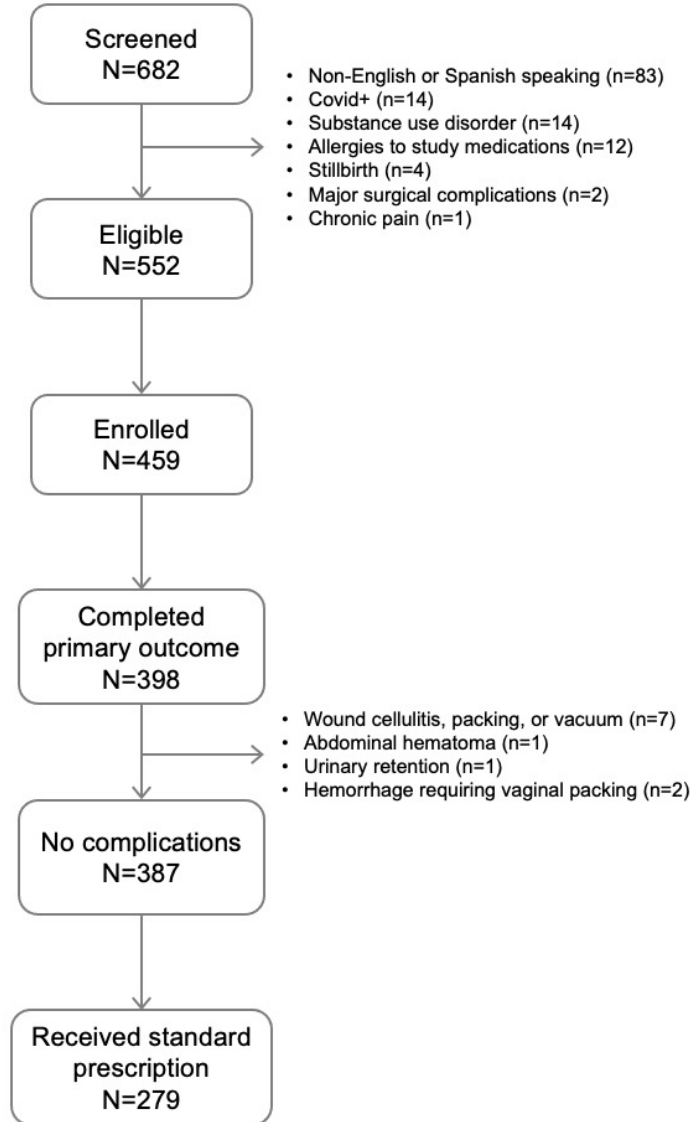
<sup>1</sup>Depression or anxiety, all sources = Derived from documentation of depression or anxiety by ICD-10 code or the presence of antidepressant in the medication list **and** patient endorsing current or history of depression or anxiety or current or history of medication for depression or anxiety through survey data | <sup>2</sup>MME/hour = total morphine milligram equivalents used / duration of inpatient stay | <sup>3</sup>Depression or anxiety, EHR only = Derived from documentation of depression or anxiety by ICD-10 code or the presence of antidepressant in the medication list | <sup>4</sup>MME in prior 24 hours = total morphine milligram equivalents used in the 24 hours prior to discharge. | LR  $\chi^2$  likelihood ratio, C-index=concordance index

Osmundson SS, Halvorson A, Graves KN, Wang C, Bruehl S, Grijalva CG, et al. Development and validation of a model to predict postdischarge opioid use after cesarean birth. *Obstet Gynecol* 2022;139.

The authors provided this information as a supplement to their article.

©2022 American College of Obstetricians and Gynecologists.

**Appendix 2. Study population.**



Osmundson SS, Halvorson A, Graves KN, Wang C, Bruehl S, Grijalva CG, et al. Development and validation of a model to predict postdischarge opioid use after cesarean birth. *Obstet Gynecol* 2022;139.

The authors provided this information as a supplement to their article.

©2022 American College of Obstetricians and Gynecologists.

**Appendix 3. Partial effects plots. Depression or anxiety, all sources: Derived from documentation of depression or anxiety by ICD-10 code or the presence of antidepressant in the medication list and patient endorsing current or history of depression or anxiety or current or history of medication for depression or anxiety through survey data. MME, morphine milligram equivalents; bedside nurse, using opioids because they were offered by the nurse; PC, principal component, derived from PC analysis, a data reduction technique resulting in fewer degrees of freedom.**

