

Supplemental Figures and legends

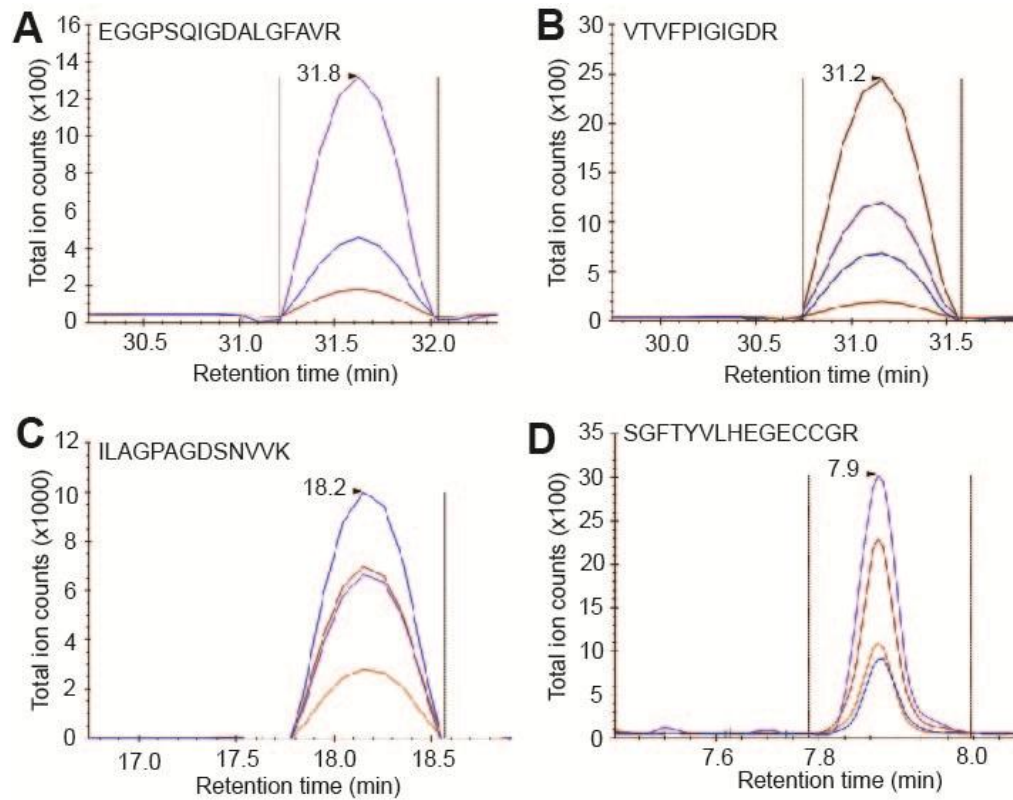


Figure 1: Detection of VWF tryptic peptides: Mass spectrometry ionizes peptides and identify the peptide ions based on their mass to a charge ratio (m/z). In SRM analysis, we first filtered the intact peptide as precursor ion by its m/z , after fragmentation, we then measured the produced peptides as fragment ions by their m/z (s) named as transitions. Typical SRM chromatograms are shown for the four VWF peptides (A – D) in samples collected from a patient under baseline conditions. Curves in each chromatogram are transition peaks of corresponding peptides. Three to four transitions in each peptide are monitored to ensure the target peptide being correctly identified and quantified.