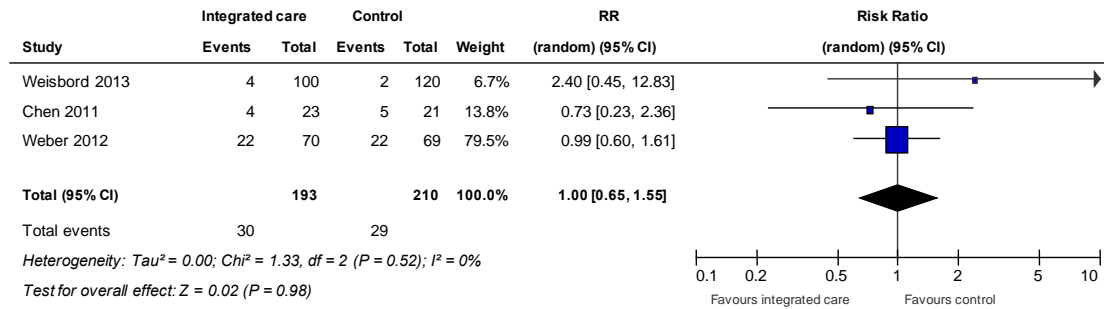
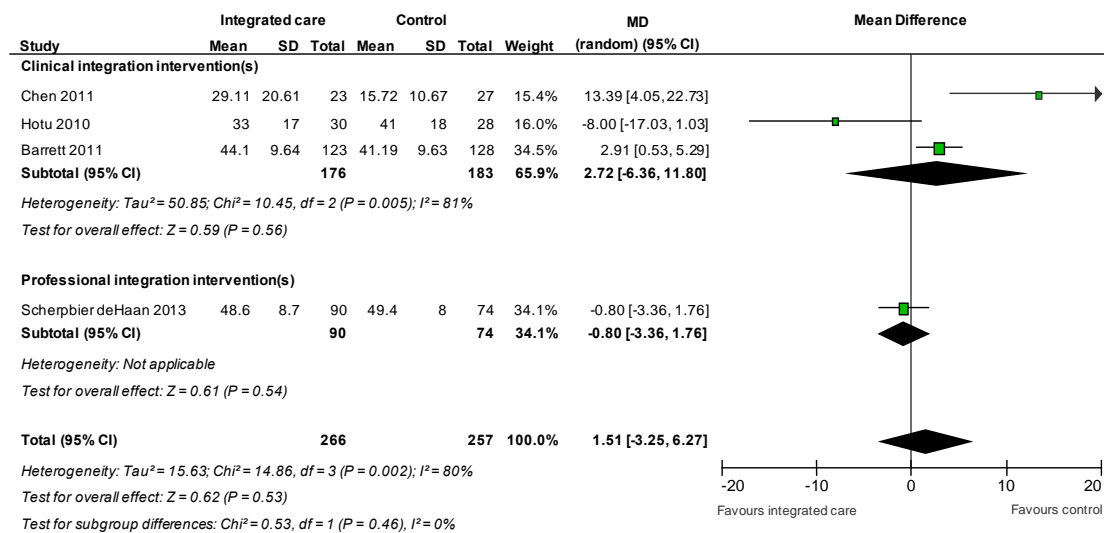


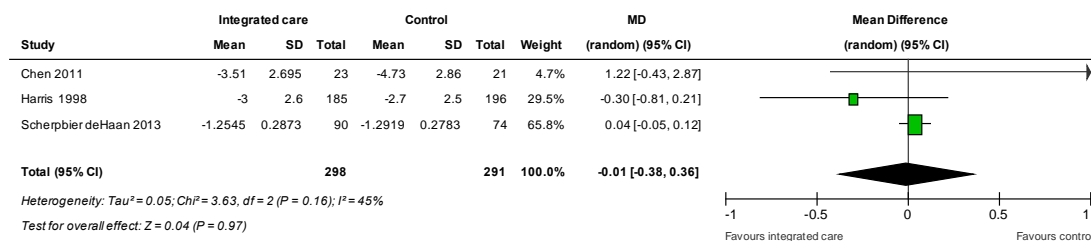
## Supplemental Figure 1. Effect integrated care on renal replacement therapy



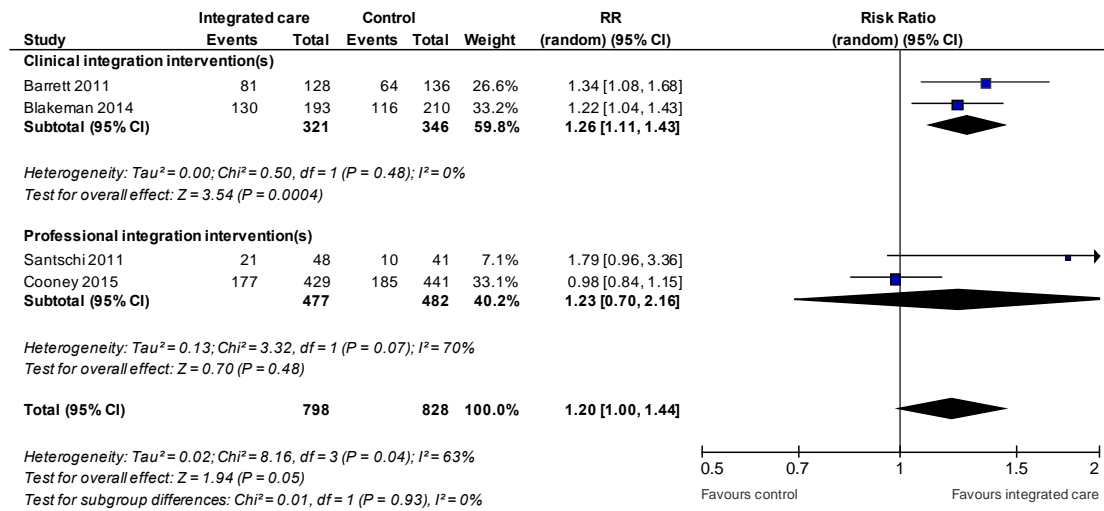
## Supplemental Figure 2. Effect of integrated care on eGFR (ml/min per 1.73 m<sup>2</sup>)



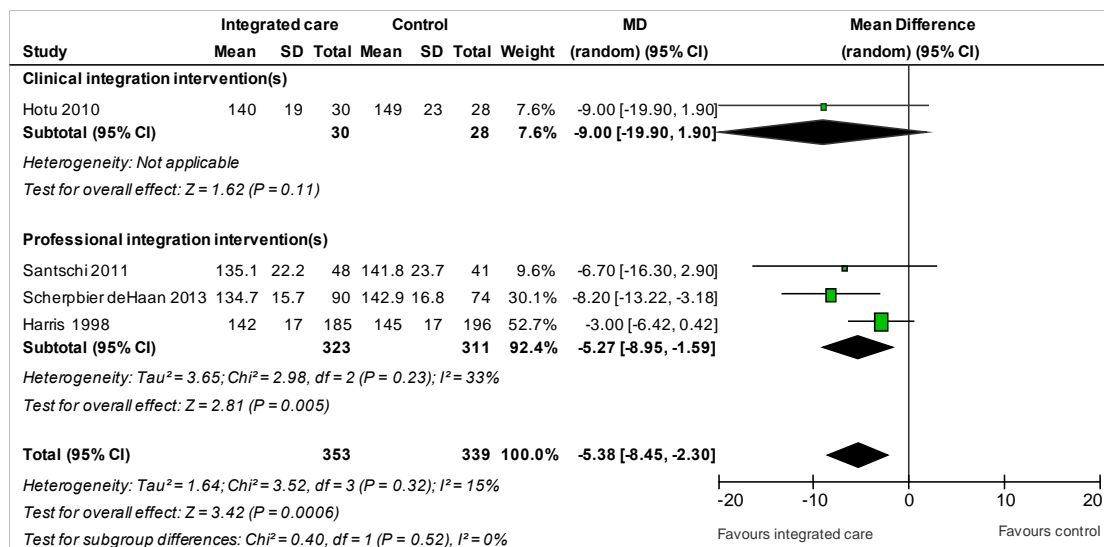
## Supplemental Figure 3. Effect of integrated care on serum creatinine (mg/dL)



## Supplemental Figure 4. Effect integrated care on controlled blood pressure (< 130/80 mmHg)



## Supplemental Figure 5. Effect of integrated care on systolic blood pressure (mmHg)



## Supplemental Figure 6. Effect of integrated care on diastolic blood pressure (mmHg)

