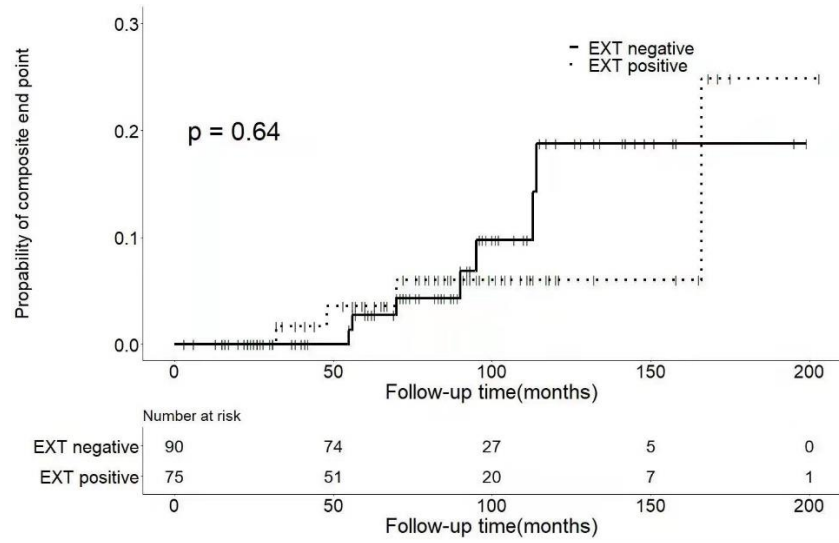


Supplemental Material

Supplemental Figure 1. Cumulative incidence of kidney endpoint in patients with exostosin-positive and exostosin-negative class V lupus nephritis.

Supplemental Table1. Changes of exostosin staining and histological changes of repeat kidney biopsy after remission in exostosin-positive and exostosin-negative class V lupus nephritis patients



Supplemental Figure 1. Cumulative incidence of renal endpoint in patients with exostosin positive and exostosin negative class V lupus nephritis. There is no statistically significant difference between the two groups

Supplemental Table 1. Changes of exostosin staining and histology in repeat kidney biopsies after remission in exostosin-positive and exostosin-negative class V lupus nephritis patients

Case	Sex/ age	Renal biopsy	Follow- up	UPr (g/24h)	Scr (mg/dl)	LN Class	EXT1 /EXT2	AI /CI	TA/TI (0-3)	IgG (0-3)	C3 (0-3)	Sub-epi deposits (0-3)	FPE %
1	F/21	1st	-	1.5	0.6	V	+/+	1/0	0/0	2	2	3	65
		2nd	7m	0.1	0.6	V	+/-	0/0	0/0	2	2	3	40
2	F/19	1st	-	8.4	0.7	V	+/+	1/0	0/0	2	2	2	80
		2nd	7m	0.3	0.6	V	-/+	0/1	0/0	2	0	2	80
3	M/22	1st	-	2.6	0.8	V	+/+	2/0	0/0	2	1	3	80
		2nd	4m	0.6	0.6	V	-/+	0/0	0/0	1	1	3	NA
4	F/20	1st	-	2.6	0.4	V	0/0	1/0	0/0	2	2	3	70
		2nd	10m	0.4	0.4	V	0/0	2/2	1/1	2	2	3	70
5	F/52	1st	-	3.1	0.8	V	0/0	2/0	0/0	2	2	3	90
		2nd	9m	0.3	1.0	V	0/0	2/3	1/1	2	1	3	90
6	F/42	1st	-	1.0	0.4	V	0/0	1/0	0/0	2	2	1	50
		2nd	14m	0.4	0.4	V	0/0	1/1	0/0	2	2	2	70
7	F/38	1st	-	3.9	0.7	V	0/0	0/2	1/1	2	2	2	50
		2nd	7m	1.0	0.5	V	0/0	1/3	1/1	2	2	2	70
8	M/13	1st	-	5.7	0.5	V	0/0	1/0	0/0	2	2	3	80
		2nd	20m	1.0	0.8	V	0/0	1/2	1/1	2	1	2	80

UPr: urinary protein; Scr: serum creatinine; LN: lupus nephritis; EXT: exostosin ;AI: activity index; CI: chronicity index; TA: tubular atrophy; TI: tubulointerstitial fibrosis; Sub-epi: subepithelial deposits; FPE: foot process effacement; NA: not available.