

Supplemental Material Table of Contents

Supplemental Table 1: ICD10 Codes

Supplemental Table 2: Simplified Score: Parameters Associated with Major Bleeding

Supplemental Table 3: Risk Factors for Death within 30 Days of Kidney Biopsy

Supplemental Figure 1: Calibration plots of risk model

Supplemental Figure 2: Major Bleeding Risk

Supplemental Figure 3a : Proportion of Major Bleeding According to Simplified Risk Score

Supplemental Figure 3b: Simplified Score: Area under ROC Curve (Continuous Score)

Supplemental Figure 4a: Timing of Death after Percutaneous Kidney Biopsy

Supplemental Figure 4b: Timing of Transfusion after Percutaneous Kidney Biopsy

Supplemental Table 1: ICD10 codes	
Percutaneous kidney biopsy	JAHB001, JAHJ006, JAGJ007
Comorbidity or medical history	
Atrial fibrillation management care	I48
Strokes	
Ischaemic stroke	I63, I66, I67
Stroke, unspecified	I64
Haemorrhagic stroke	I60–I62, I69
Ischaemic heart disease	I20–I25
Heart failure	I50, I110, I130, I132, I131, I139
Valvular disease	I05–I091, I33–I39, Q22, Q23
Hypertension	I10–I15
Diabetes mellitus	E10–E14
Vascular diseases	
Myocardial infarction	I21, I252
Peripheral arterial disease	I70–I73
Occlusions	I65, I77
Obesity	E65–E66
Abnormal kidney function	N17–N19 (+N28) codes for renal insufficiency, dialysis (Z49, Z992), E102, I12, I13 (transplantation (Z940, T861) was excluded)
Acute kidney injury	N170
Liver disease	K70–K77, procedures for liver transplantation or resection
Dyslipidaemia	E78
Anaemia	D50–D64
Lung disease	J40–J70, J961
Including emphysema and chronic obstructive pulmonary disease	J43, J44
Alcohol-related diagnoses	E244, F10, G312, G621, G721, I426, K292, K70, K860, O354, P043, Q860, T51, Y90, Y91, Z502, Z714
Cancer within preceding 5 years	Entire C-series
Glomerular disease	N04.9, N04.0, N04.00, N04.1, N04.2, N03.10, N05.1, N06.1, N009, N05.1, N08.5, N39.1
Diabetic kidney disease	N08.3
Vascular or hypertensive kidney disease	I12.0
Auto-immune diseases	N08.2, D869, D891, M310, M321, M349
Thrombotic microangiopathy	D321, D593, M311
Vasculitis	M313, M317
Hematological-related renal diseases	N161, N08.1, N08.2, N08.5
Amyloidosis	E085.3
Major bleeding	
Blood transfusion	Z513, FELF011
Angiographic intervention	EDSF008, EDSF003
Hematoma	T810
Nephrectomy	JAF002, JAF023

Supplemental Table 2: simplified score: parameters associated with major bleeding

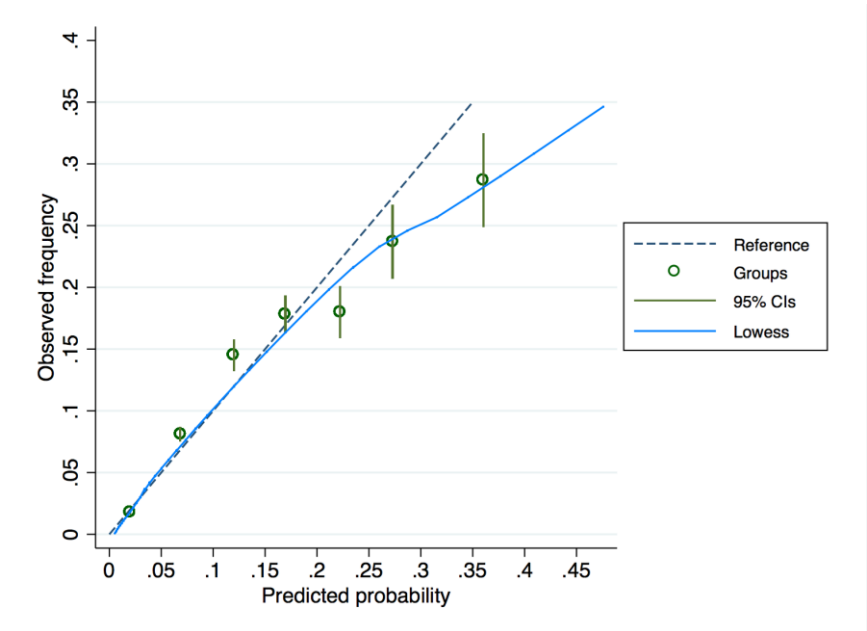
	Univariable	Multivariable
	OR, 95%CI	
Age (per +1 quartile)	1.33 (1.28-1.37)	1.06 (1.02-1.11)
Charlson comorbidity index (per +1 quartile)	1.52 (1.47-1.57)	1.13 (1.07-1.19)
Frailty index (per +1 quartile)	1.77 (1.708-1.84)	1.25 (1.19-1.30)
Gender (male)	0.74 (0.69-0.80)	0.78 (0.72-0.85)
Hypertension	1.30 (1.21-1.41)	0.88 (0.80-0.97)
Diabetes mellitus	1.17 (1.07-1.28)	0.79 (0.71-0.88)
Heart failure	2.36 (2.14-2.61)	1.03 (0.92-1.16)
Valve disease	2.26 (1.96-2.59)	1.15 (0.99-1.35)
Coronary artery disease	1.41 (1.26-1.58)	0.97 (0.84-1.11)
Vascular disease	1.38 (1.23-1.55)	0.90 (0.79-1.02)
Atrial fibrillation	2.15 (1.93-2.39)	1.09 (0.96-1.23)
Stroke	1.24 (0.95-1.61)	0.76 (0.58-1.01)
Smoker	1.21 (1.08-1.37)	1.03 (0.90-1.19)
Dyslipidemia	0.99 (0.91-1.10)	0.84 (0.75-0.94)
Obesity	0.88 (0.78-0.98)	0.73 (0.65-0.83)
Denutrition	2.57 (2.32-2.85)	0.99 (0.88-1.11)
Alcohol-related diagnoses	1.54 (1.35-1.76)	0.91 (0.77-1.06)
Lung disease	1.57 (1.40-1.74)	0.91 (0.81-1.03)
Liver disease	1.67 (1.46-1.91)	0.86 (0.73-1.01)
Anaemia	6.59 (6.08-7.14)	3.66 (3.34-4.01)
Thrombocytopenia	2.71 (2.43-3.02)	1.43 (1.27-1.61)
Cancer within preceding years	1.74 (1.61-1.89)	1.19 (1.08-1.31)
Abnormal renal function	2.24 (2.07-2.42)	1.29 (1.18-1.40)
Acute renal failure	4.77 (4.40-5.17)	2.38 (2.17-2.61)

Supplemental Table 3: Risk factors for death within 30 days of kidney biopsy

		Unadjusted	Adjusted
		Odds ratio (95% CI)	
Major bleeding after biopsy	81 (3)	3.53 (2.77-4.49)	1.95 (1.50-2.54)
Age (quartile)	72±12 vs 57±17	2.33 (2.09-2.60)*	1.86 (1.64-2.10)*
Charlson comorbidity index	5.9±2.3 vs 4.5±2.8	1.81 (1.66-1.97)*	1.07 (0.95-1.21)*
Frailty index	9.5±6.7 vs 6.8±7.4	1.65 (1.52-1.79)*	1.07 (0.97-1.18)*
Gender (male)	339 (1)	1.36 (1.13-1.64)	1.18 (0.97-1.44)
History of cardiovascular and metabolic diseases			
Hypertension	303 (1)	1.34 (1.12-1.60)	0.89 (0.72-1.09)
Diabetes mellitus	123 (1)	1.16 (0.95-1.43)	0.83 (0.65-1.06)
Obesity	71 (0.9)	0.93 (0.72-1.20)	0.85 (0.65-1.12)
Heart failure	146 (3)	3.65 (3.01-4.44)	1.88 (1.49-2.38)
Valve disease	46 (2)	2.23 (1.67-3.1)	0.87 (0.62-1.22)
Coronary artery disease	114 (2)	2.74 (2.22-3.38)	1.51 (1.17-1.95)
Vascular disease	86 (2)	1.80 (1.42-2.27)	0.92 (0.70-1.21)
Atrial fibrillation	107 (2)	2.99 (2.41-3.71)	1.08 (0.84-1.38)
Stroke	17 (2)	1.92 (1.18-3.13)	1.12 (0.68-1.86)
Smoker	68 (1)	1.45 (1.12-1.87)	1.23 (0.92-1.65)
Dyslipidemia	111 (1)	1.22 (0.99-1.51)	0.85 (0.67-1.08)
History of other conditions			
Denutrition	105 (2)	3.05 (2.46-3.80)	1.43 (1.13-1.82)
Alcohol-related diagnoses	58 (2)	1.86 (1.41-2.45)	1.08 (0.77-1.52)
Lung disease	106 (2)	2.32 (1.87-2.89)	1.21 (0.95-1.53)
Liver disease	71 (2)	2.65 (2.05-3.41)	2.01 (1.48-2.71)
Anaemia	209 (2)	2.42 (2.02-2.89)	1.14 (0.92-1.41)
Thrombocytopenia	53 (1)	1.59 (1.19-2.12)	0.87 (0.64-1.18)
Cancer within preceding years	308 (3)	5.41 (4.51-6.48)	3.06 (2.47-3.78)
Known kidney diagnoses at the time of biopsy			
Abnormal kidney function	151 (1)	1.02 (0.84-1.24)	0.63 (0.51-0.78)
Acute kidney injury	277 (2)	2.97 (2.48-3.54)	1.89 (1.53-2.33)
Glomerular disease	93 (0.5)	0.45 (0.36-0.57)	0.73 (0.58-0.93)
Vascular or hypertensive kidney disease	17 (0.4)	0.38 (0.23-0.61)	0.42 (0.26-0.69)
Diabetic kidney disease	21 (0.6)	0.59 (0.38-0.91)	0.65 (0.40-1.05)
Auto-immune disease	22 (0.7)	0.71 (0.46-1.09)	1.15 (0.73-1.81)
Vasculitis	29 (1)	1.43 (0.98-2.09)	1.16 (0.78-1.73)
Hematological-related kidney disease	23 (1)	1.50 (0.98-2.28)	0.62 (0.40-0.95)
Thrombotic microangiopathy	11 (1)	1.32 (0.73-2.42)	0.99 (0.53-1.85)
Amyloidosis	8 (4)	4.52 (2.22-9.23)	2.74 (1.30-5.78)
Other diagnosis	4 (0.6)	0.65 (0.24-1.76)	0.39 (0.14-1.06)
All parameters expressed in number and percentage except for age, Charlson index and frailty index expressed in mean±standard deviation in patients who died vs those who did not			
*: OR expressed per +1 quartile			

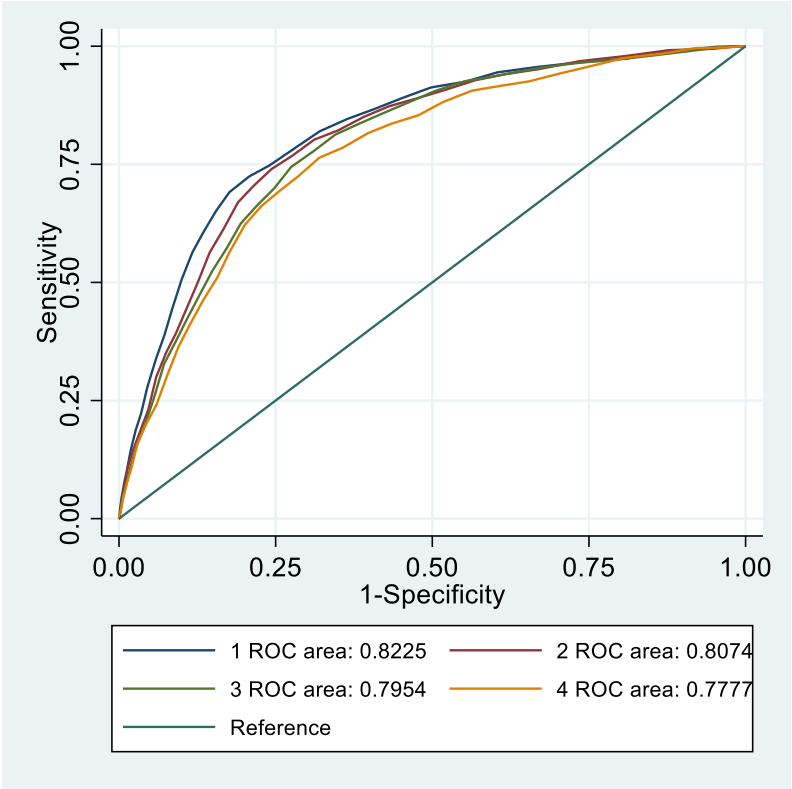
Supplemental Figure 1: Calibration plots of risk model

The diagonal line represents perfect calibration. Calibration of the bleeding risk score is relatively good up to a predicted rate of major bleeding of approximately 30% (i.e. in 50,234/52,138 (96%) of patients). Vertical bars represent 95% CIs.

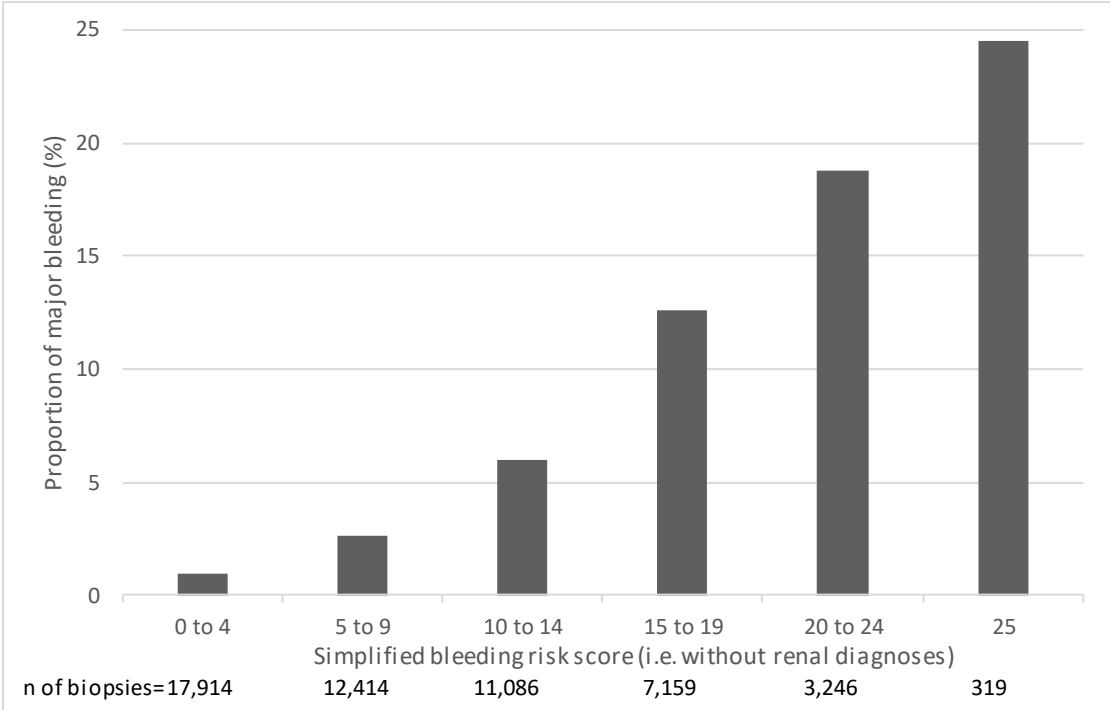


Supplemental Figure 2: Major Bleeding Risk

ROC curves in patients according to the number of biopsies per year (4 quartiles : 1 = first quartile, 2 = second quartile, 3 = third quartile ; 4 = fourth quartile). AUC ROC differences among curves were significant (p=0.001) but not clinically relevant.

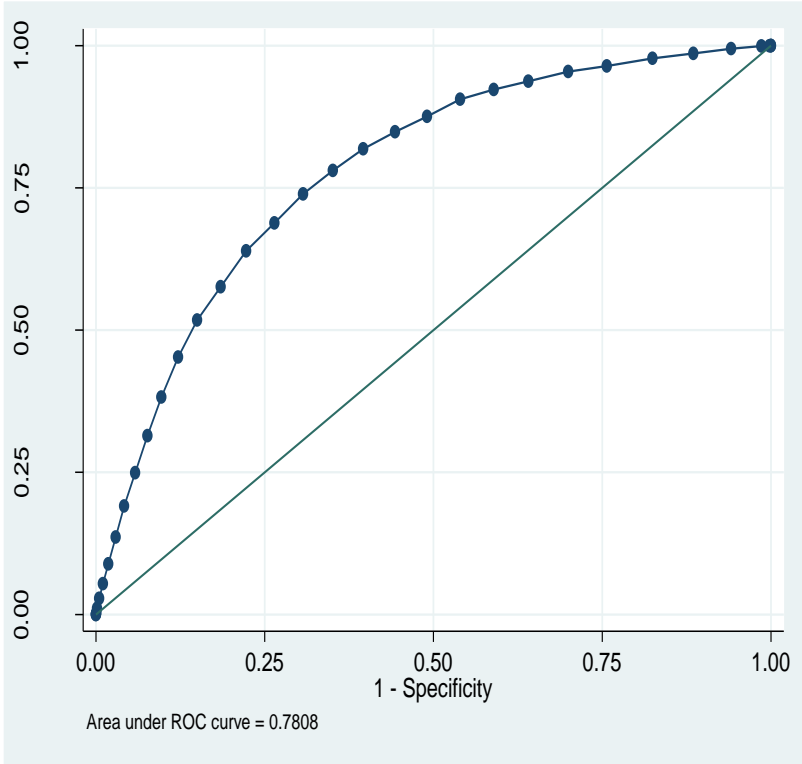


Supplemental Figure 3a : Proportion of Major Bleeding According to Simplified Risk Score

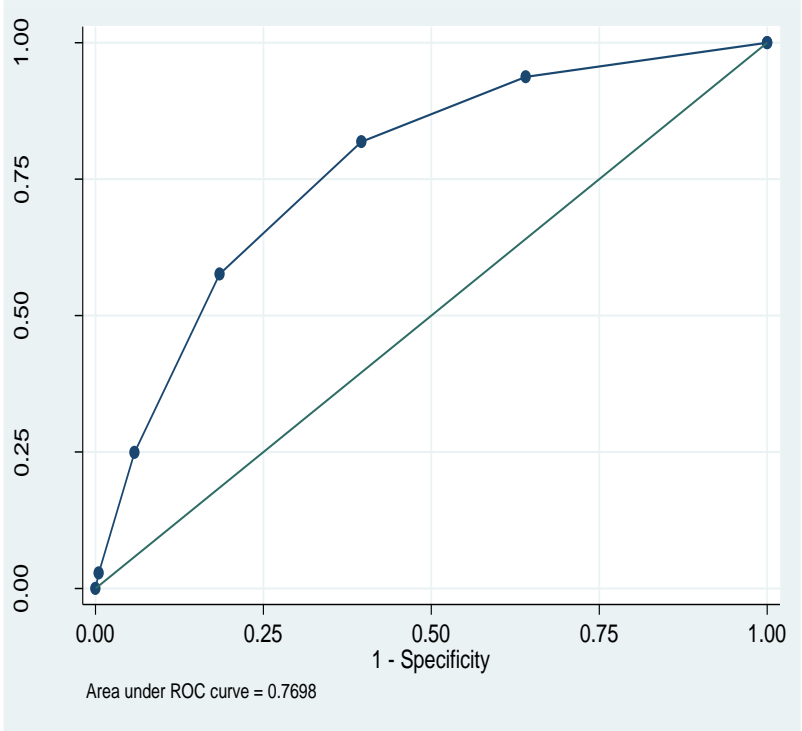


Simplified major bleeding score = (age (45-60 : +1 point, 61-71 : +2 points ; >71 : +3 points) + Charlson index (2-4 : +2 points, 5-6 : +4 points, >6 : +6 points) + frailty index (1.5-4.4 : +2 points, 4.5-9.5 : +4 points, >9.5 : +6 points) + gender (male : -1 point) + diabetes mellitus (-1 point) + dyslipidemia (-1 point) + hypertension (-1 point) + obesity (-1 point) + abnormal kidney function (+2 points) + anemia (+5 points) + thrombocytopenia (+2 points) + cancer (+2 points) + acute kidney injury (+3 points)) + 5 points.

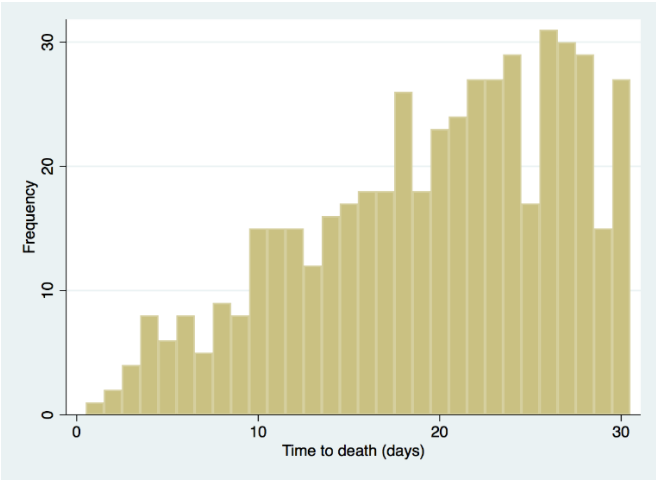
Supplemental Figure 3b: Simplified Score: Area under ROC Curve (Continuous Score)



Supplemental Figure 3c : simplified score : area under ROC curve (6-level score)



Supplemental Figure 4a: Timing of Death after Percutaneous Kidney Biopsy



Supplemental Figure 4b : Timing of Transfusion after Percutaneous Kidney Biopsy

