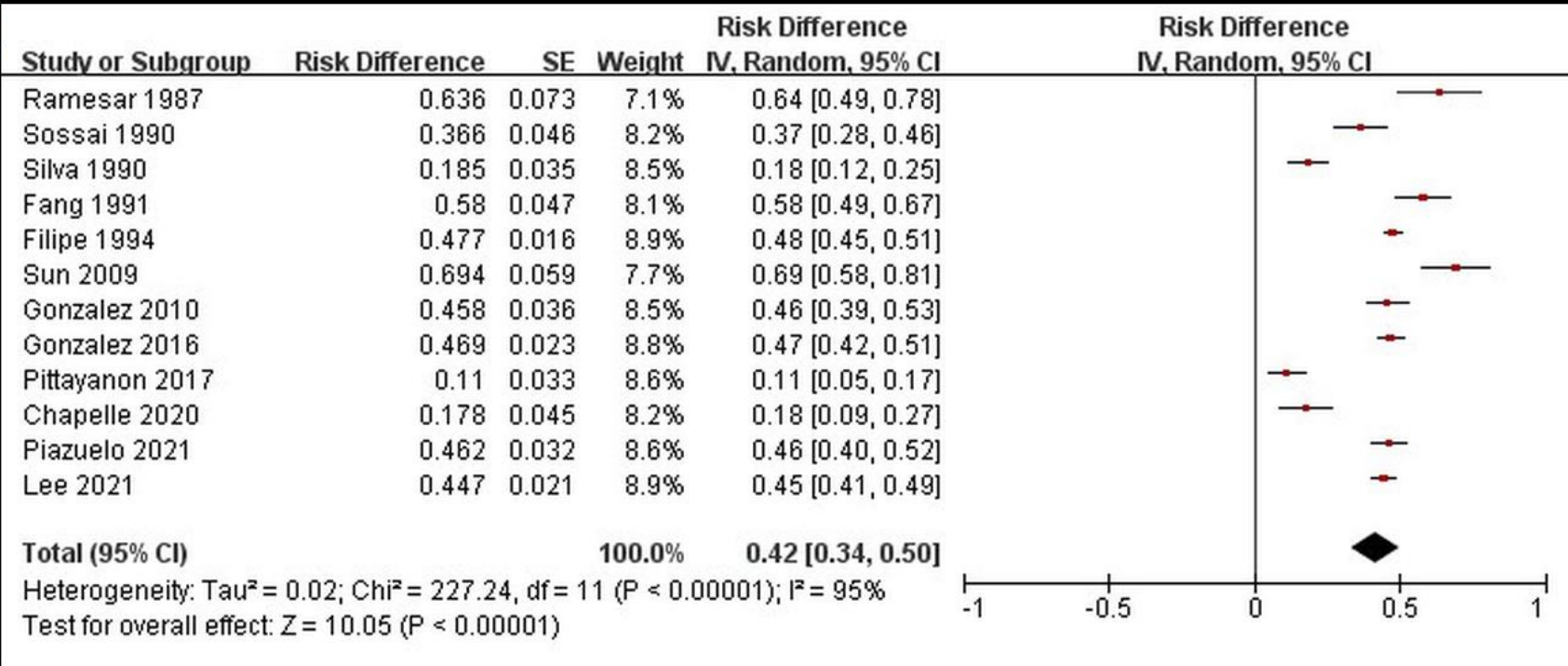


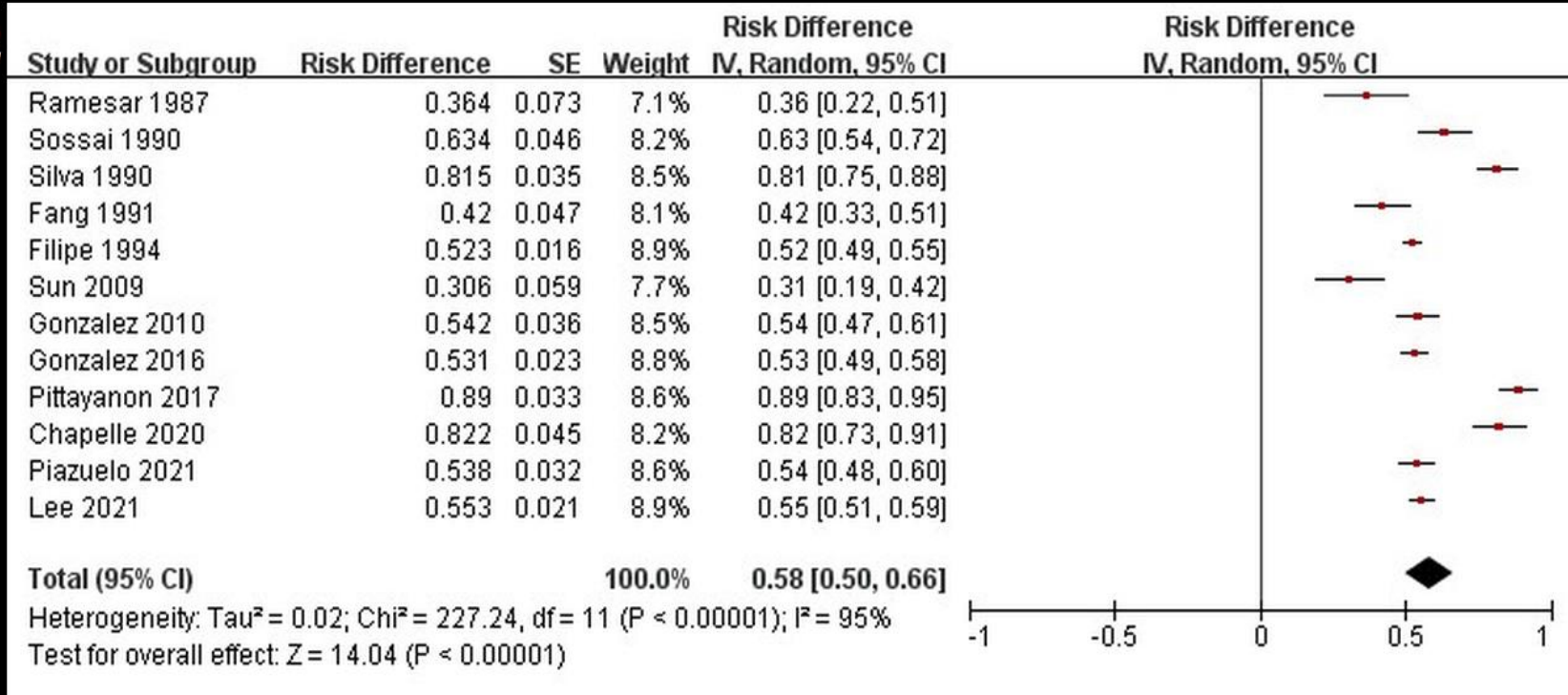
S1



Supplemental Figure 1

Forest plots based on 12 studies. The fixed-effects estimated pooled prevalence of incomplete IM among patients with IM was 42% (95%CI, 34%–49%) and complete IM was 58% (95% CI, 50%–66%).

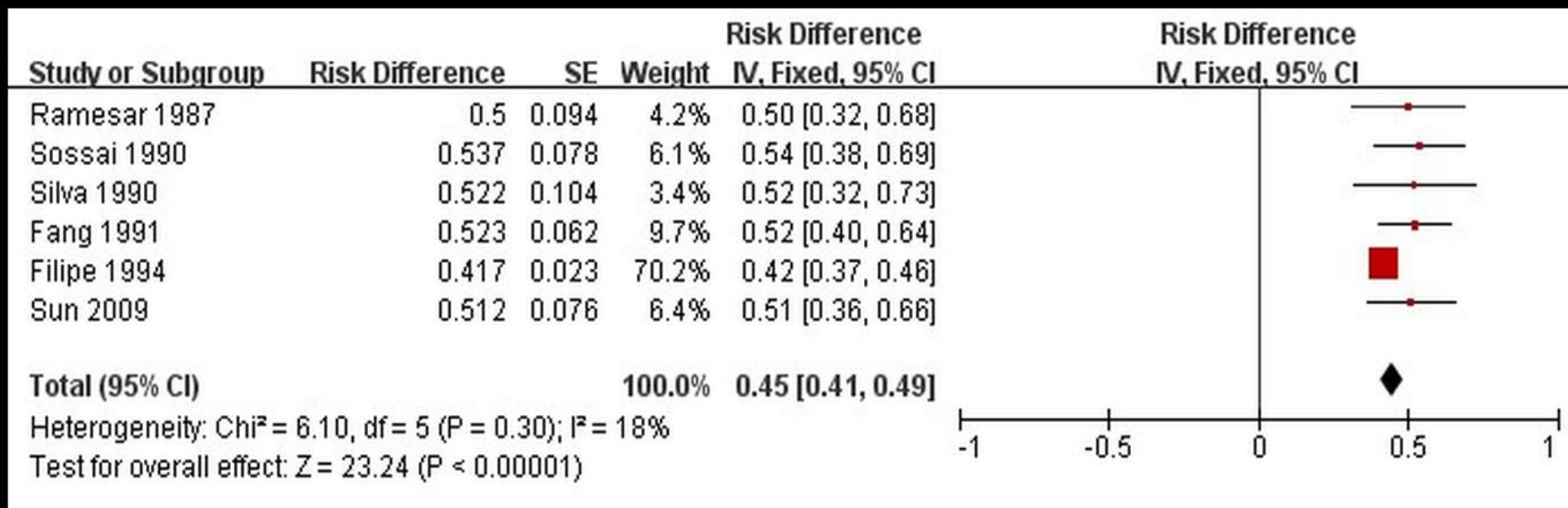
S2



### Supplemental Figure 2

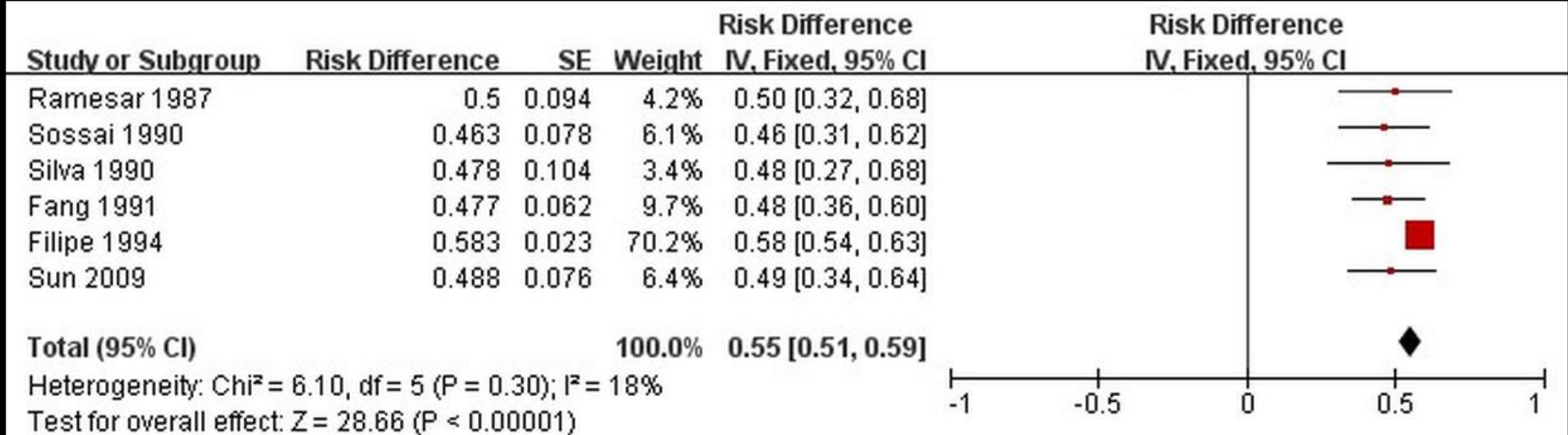
Forest plots based on 12 studies. The fixed-effects estimated pooled prevalence of incomplete IM among patients with IM was 42% (95%CI, 34%–49%) and complete IM was 58% (95% CI, 50%–66%).

S3



Supplemental Figure 3.

Forest plots based on 12 studies. In patients with incomplete IM, the fixed-effects estimated pooled prevalence of type II IM was 45% (95%CI, 41%–49%) and type III IM was 55% (95%CI, 51%–59%).

**S4****Supplemental Figure 4**

Forest plots based on 12 studies. In patients with incomplete IM, the fixed-effects estimated pooled prevalence of type II IM was 45% (95%CI, 41%–49%) and type III IM was 55% (95%CI, 51%–59%).