

Supplemental Digital Content 1 - Figure

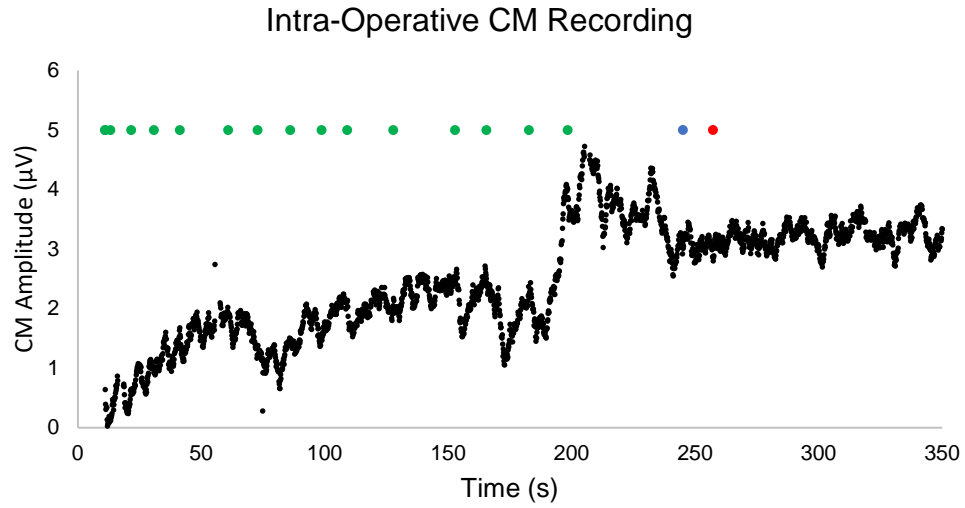
Ear 1 (See Table 1)

A) Intra-Operative CM trace – Electrode contacts entering RW marked (green = contact, blue = blue marker, red = electrode released)

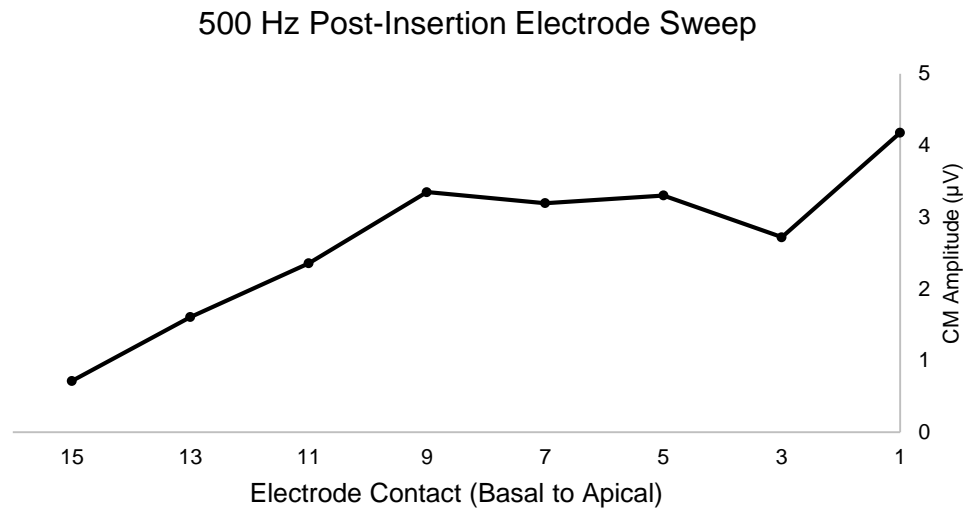
B) Post-Insertion electrode scan CM Traces

C) Pre-Operative, Post-Operative and ECoChG predicted audiometry thresholds (most recent)

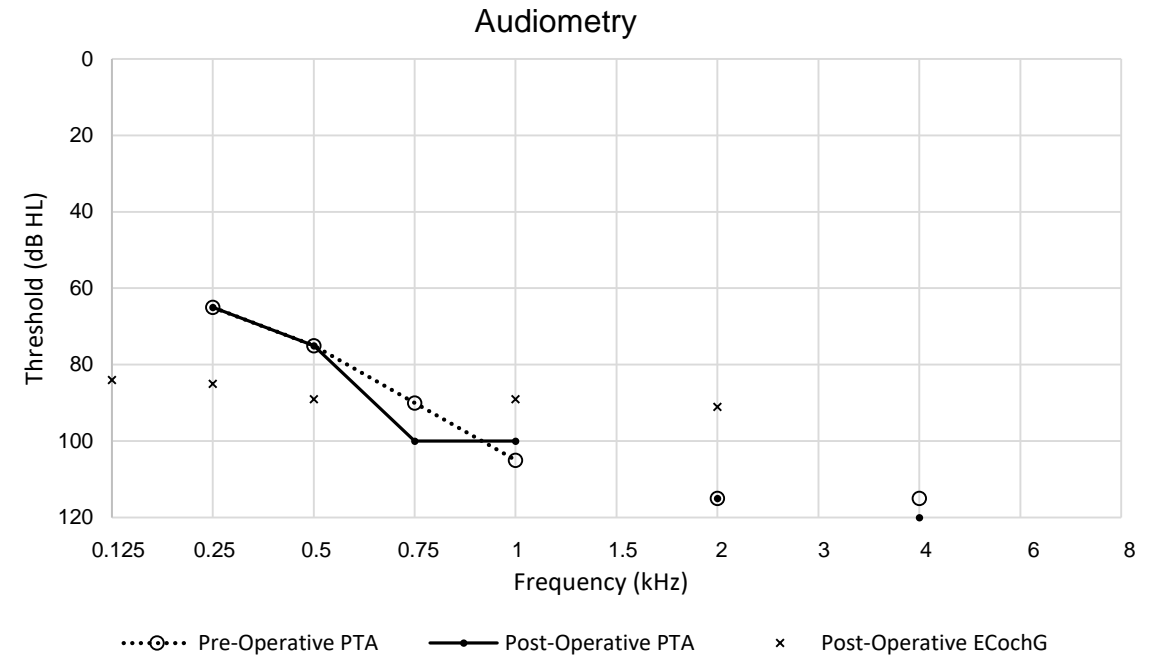
A



B



C



N.B. Intra-operative recording started at electrode contact 3 for this ear

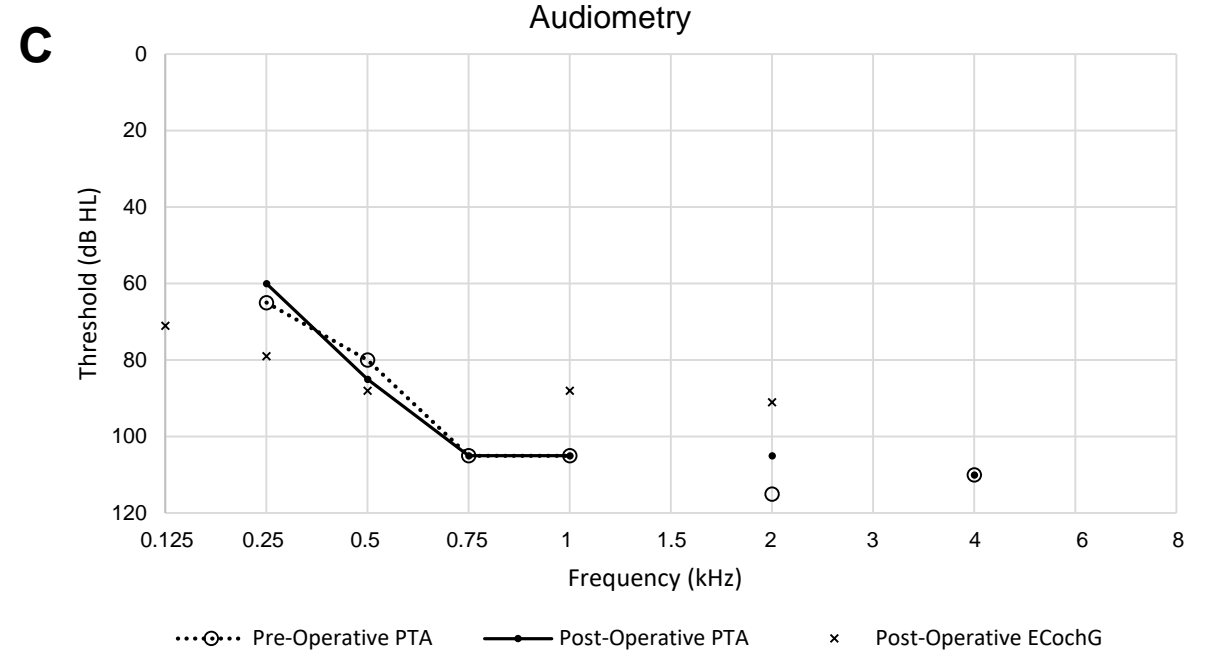
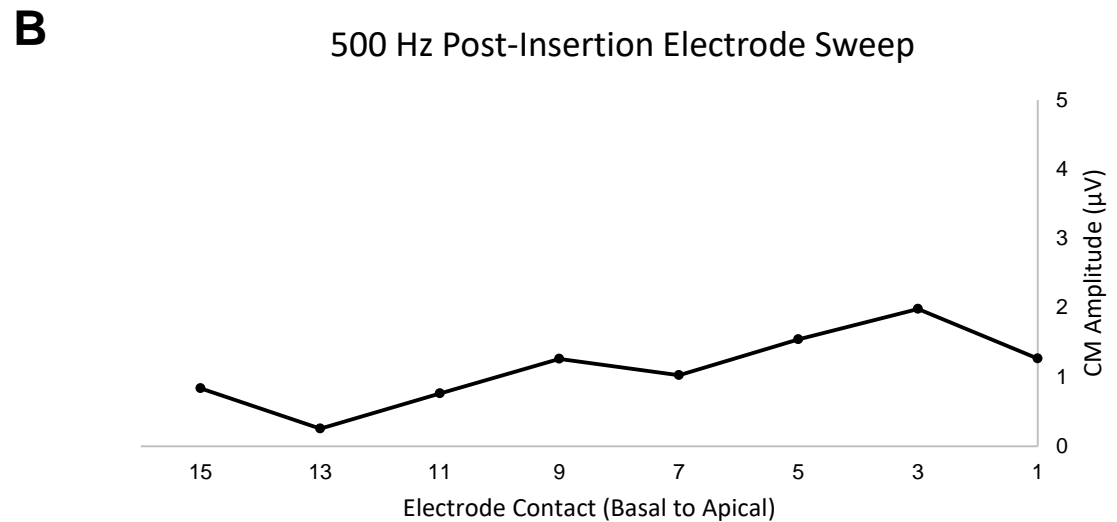
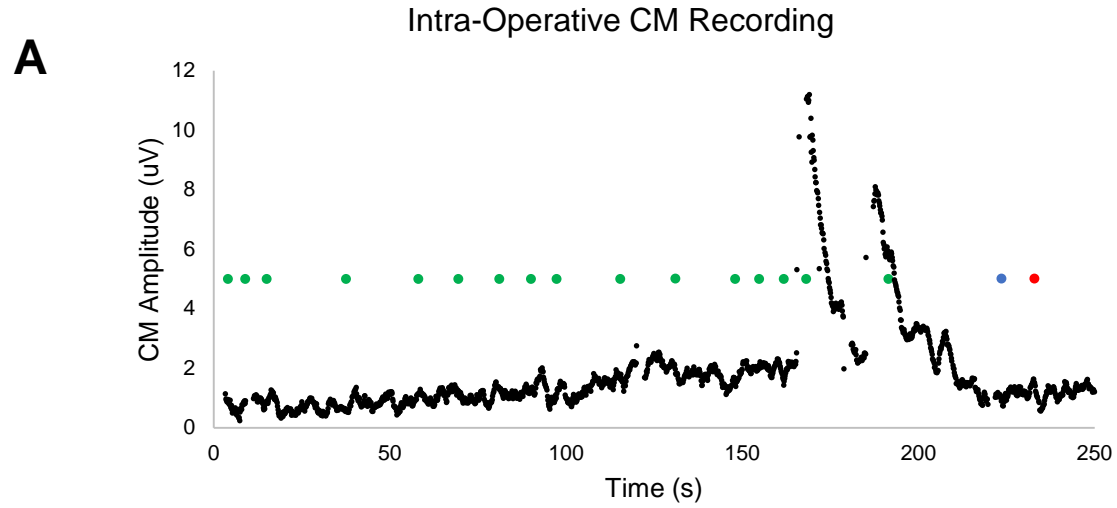
Supplemental Digital Content 1 - Figure

Ear 2 (See Table 1)

A) Intra-Operative CM trace – Electrode contacts entering RW marked (green = contact, blue = blue marker, red = electrode released)

B) Post-Insertion electrode scan CM Traces

C) Pre-Operative, Post-Operative and ECoChG predicted audiometry thresholds (most recent)



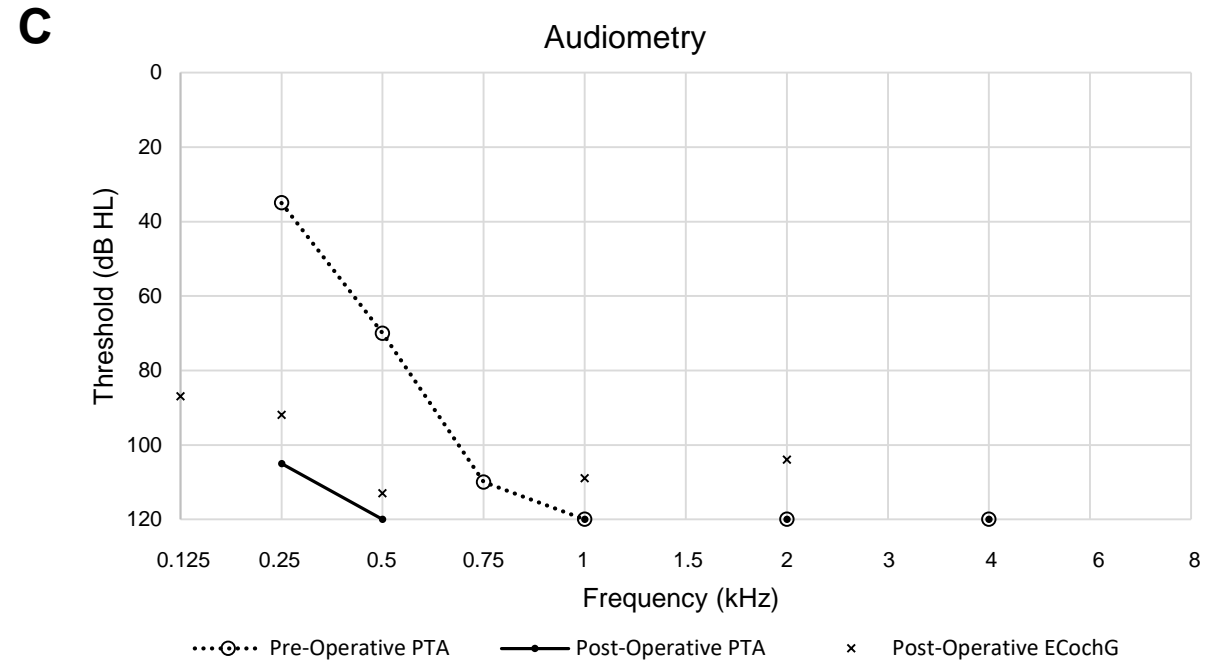
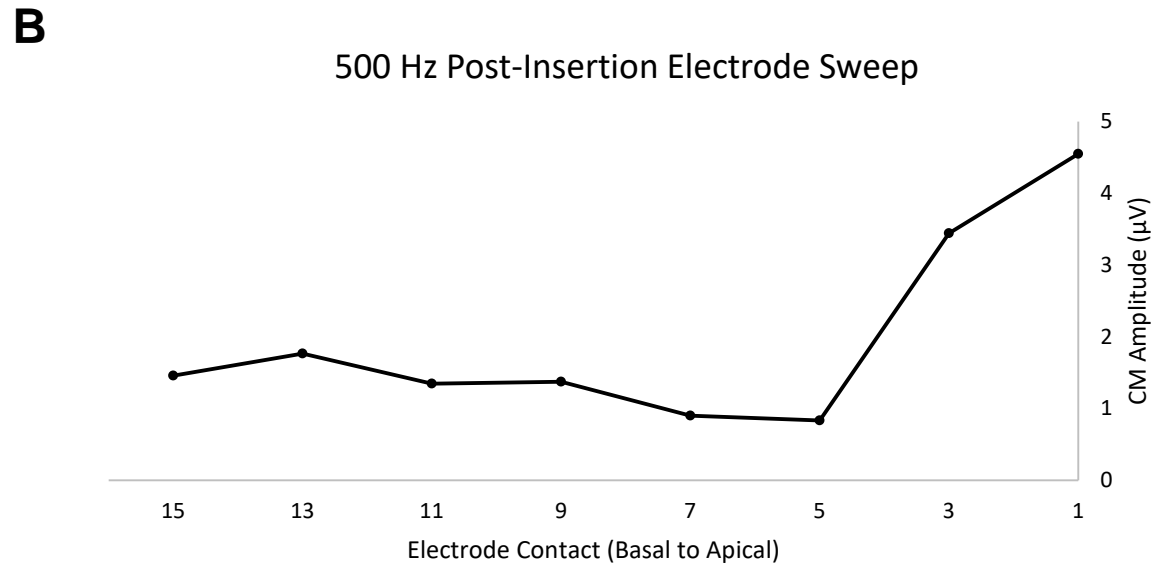
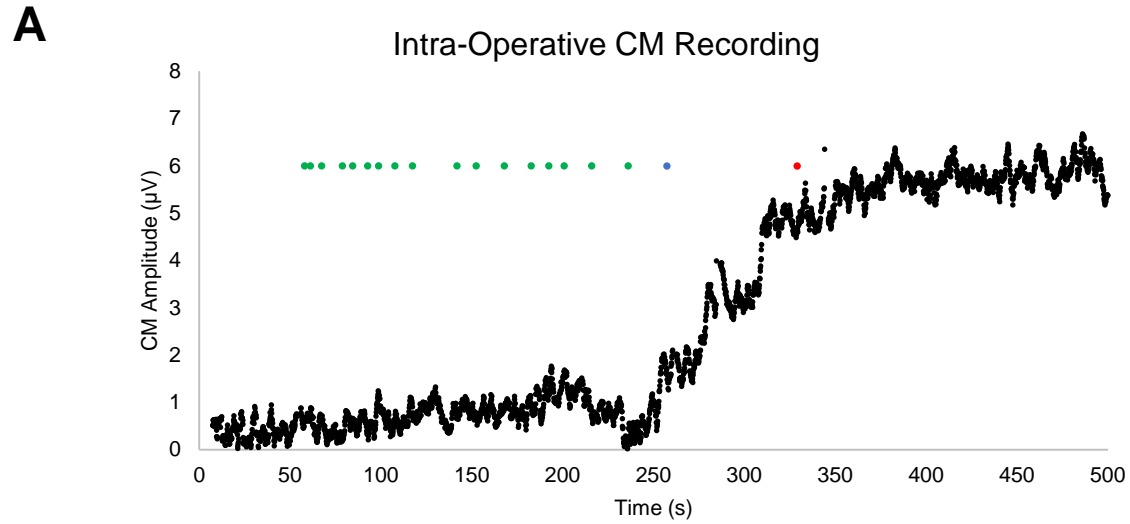
Supplemental Digital Content 1 - Figure

Ear 3 (See Table 1)

A) Intra-Operative CM trace – Electrode contacts entering RW marked (green = contact, blue = blue marker, red = electrode released)

B) Post-Insertion electrode scan CM Traces

C) Pre-Operative, Post-Operative and ECoChG predicted audiometry thresholds (most recent)



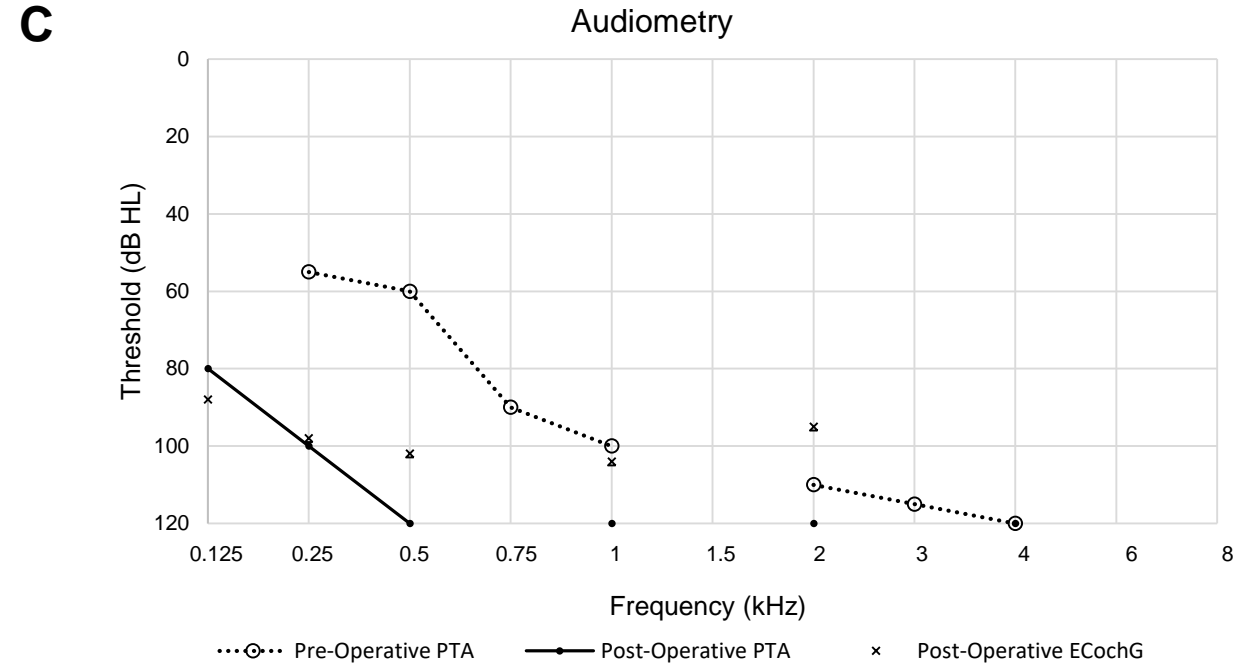
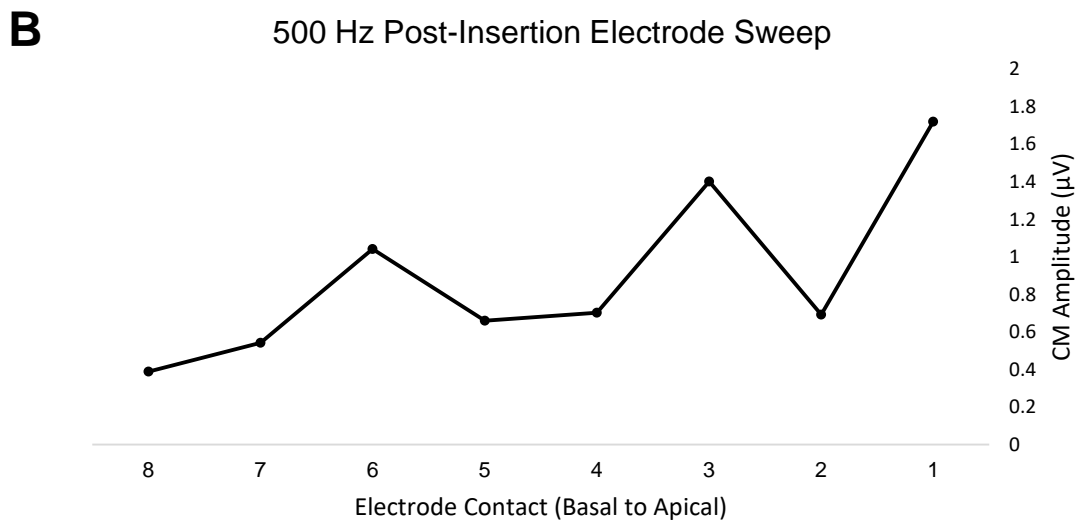
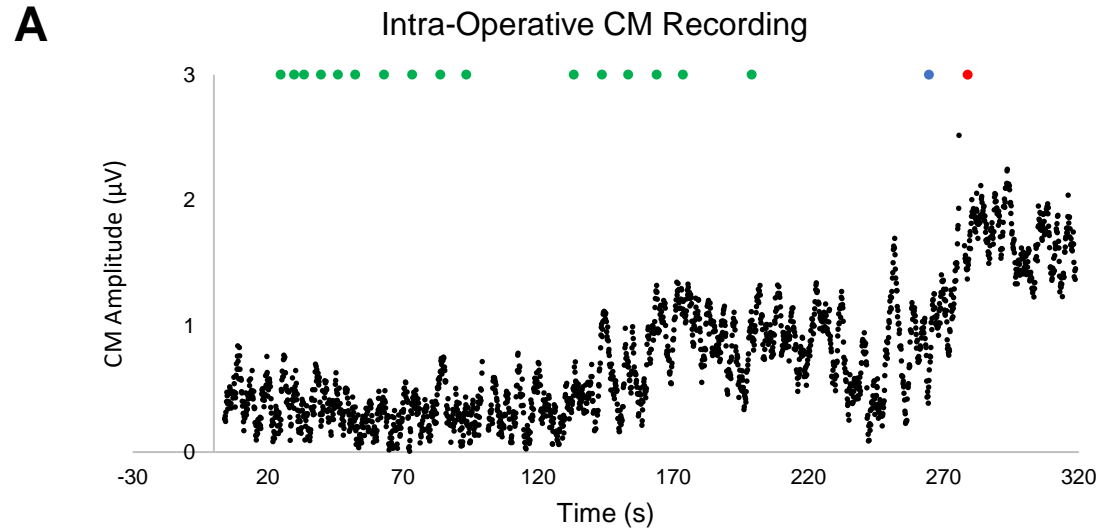
Supplemental Digital Content 1 - Figure

Ear 4 (See Table 1)

A) Intra-Operative CM trace – Electrode contacts entering RW marked (green = contact, blue = blue marker, red = electrode released)

B) Post-Insertion electrode scan CM Traces

C) Pre-Operative, Post-Operative and ECoChG predicted audiometry thresholds (most recent)



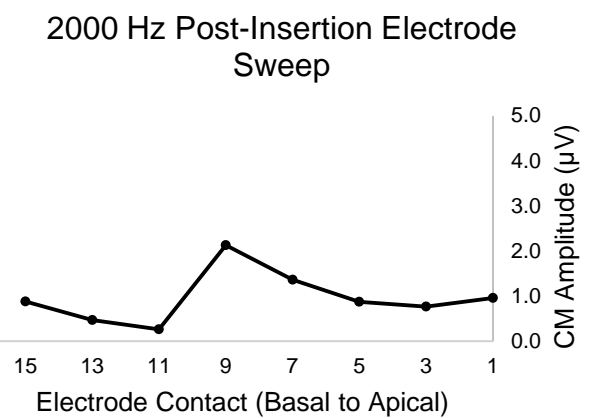
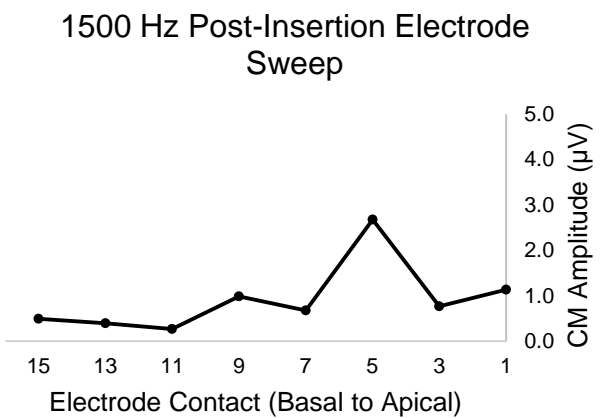
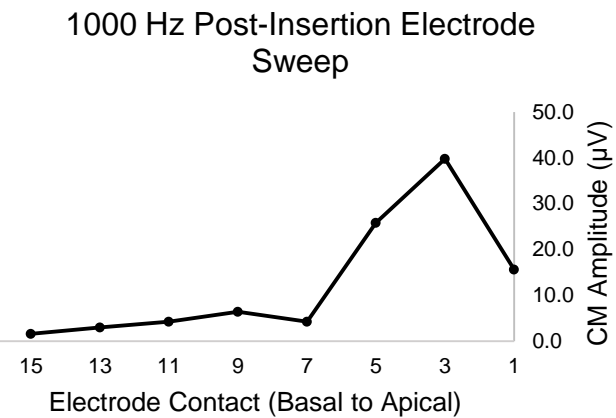
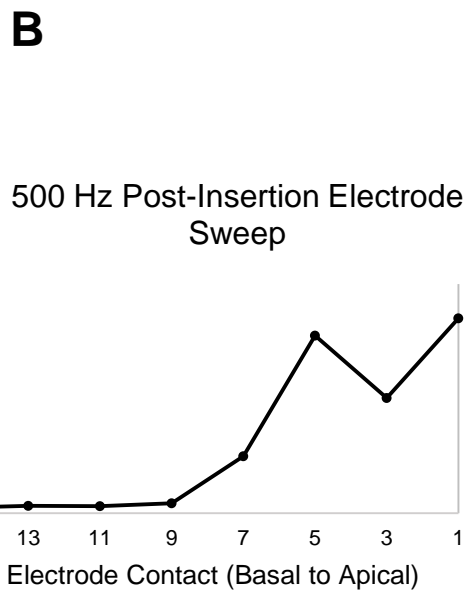
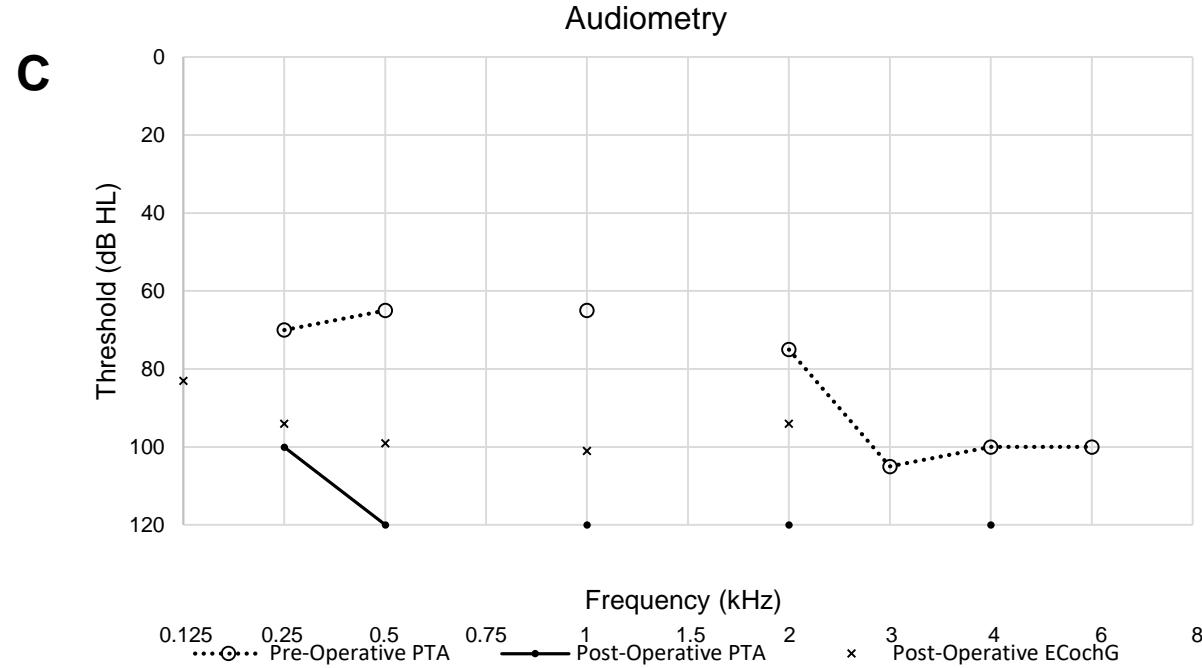
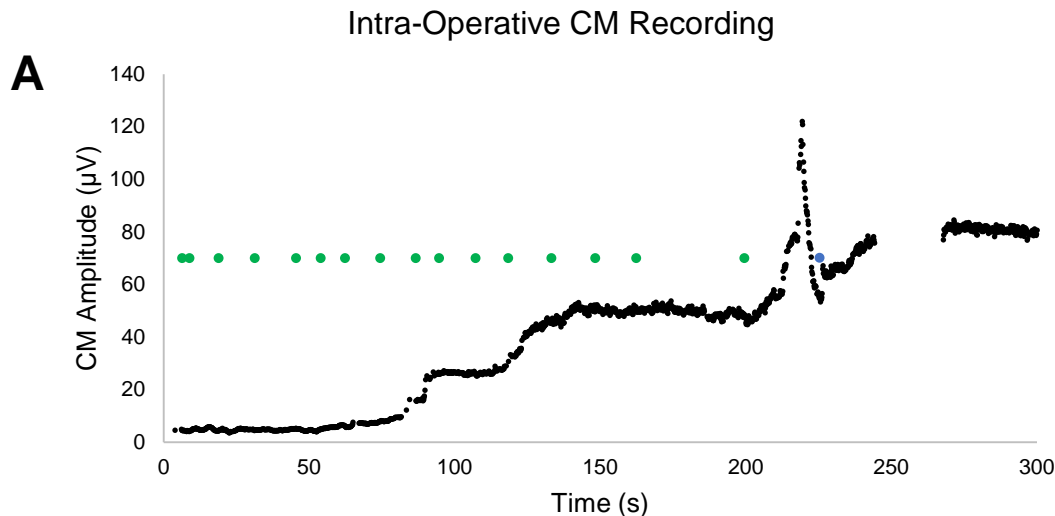
Supplemental Digital Content 1 - Figure

Ear 5 (See Table 1)

A) Intra-Operative CM trace – Electrode contacts entering RW marked (green = contact, blue = blue marker, red = electrode released)

B) Post-Insertion electrode scan CM Traces

C) Pre-Operative, Post-Operative and ECoChG predicted audiometry thresholds (most recent)



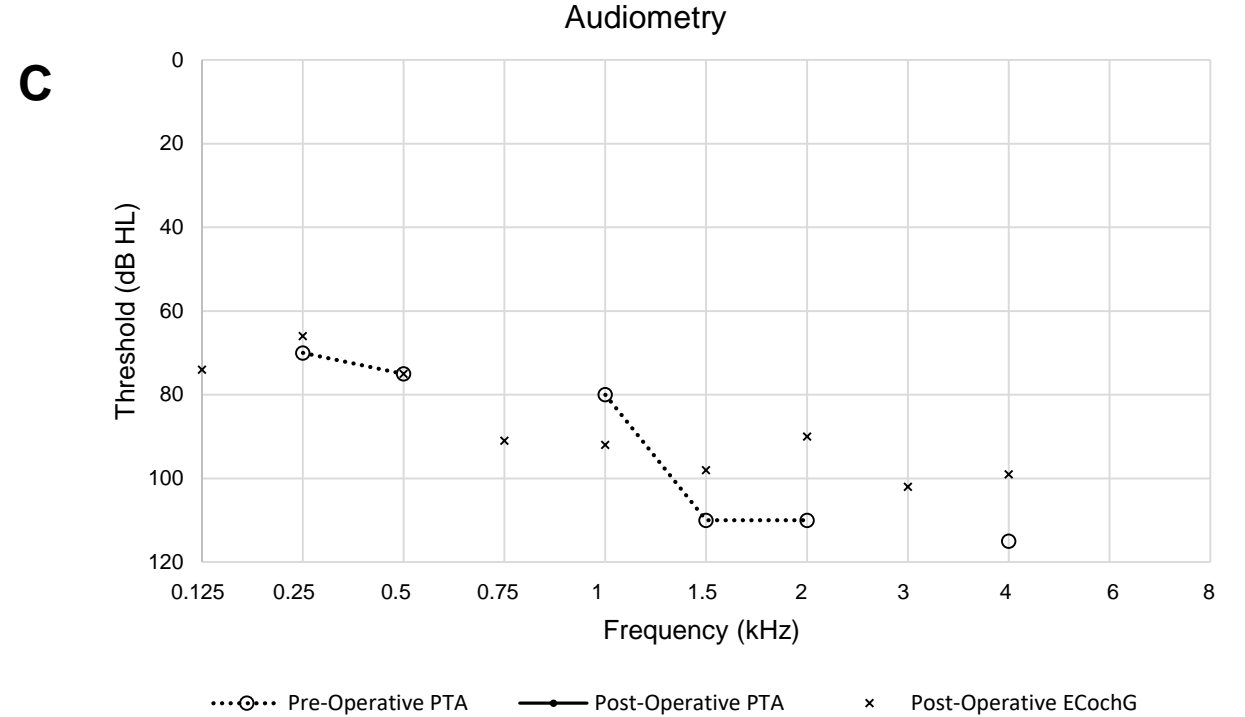
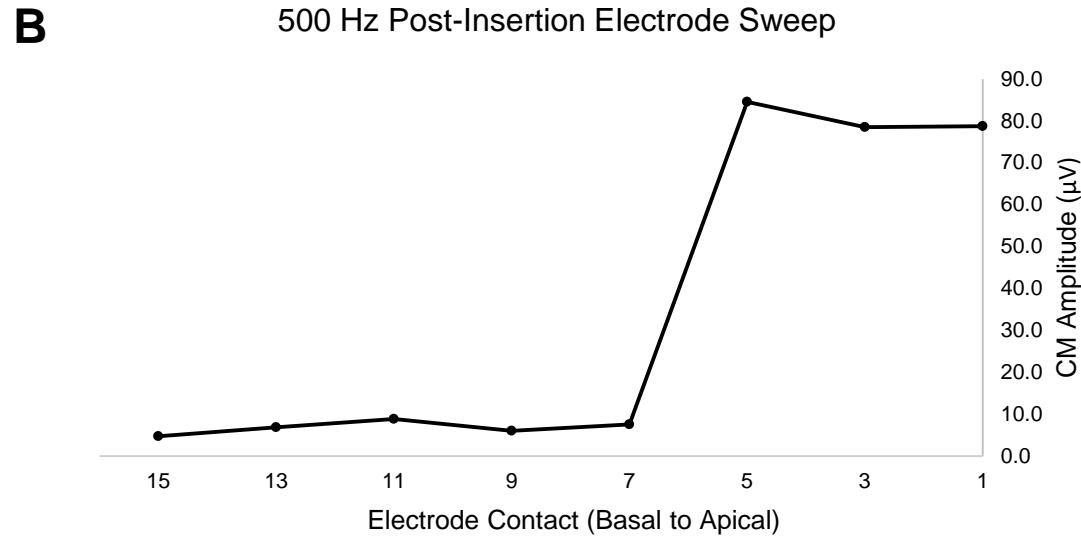
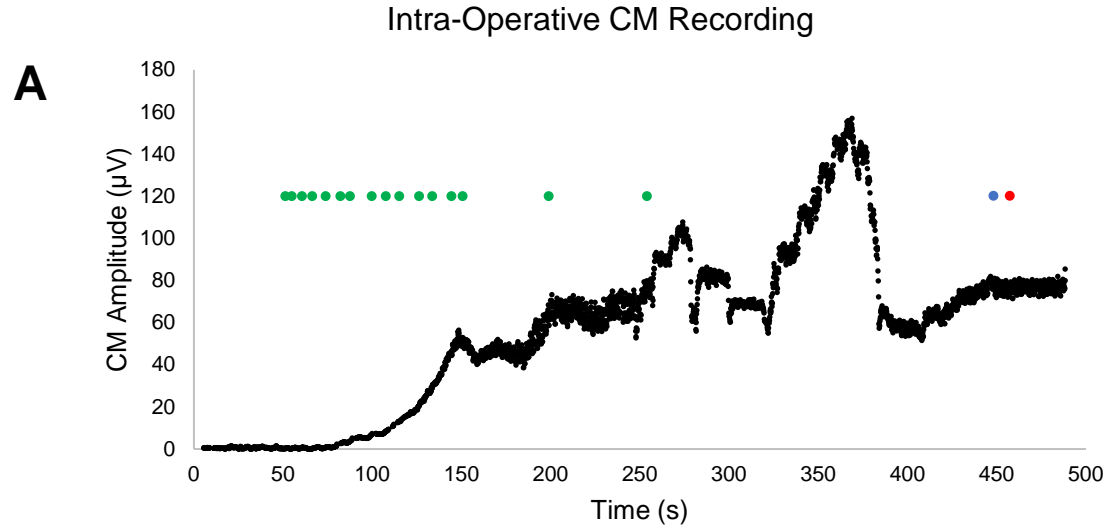
Supplemental Digital Content 1 - Figure

Ear 6 (See Table 1)

A) Intra-Operative CM trace – Electrode contacts entering RW marked (green = contact, blue = blue marker, red = electrode released)

B) Post-Insertion electrode scan CM Traces

C) Pre-Operative, Post-Operative and ECoChG predicted audiometry thresholds (most recent)



N.B. Post-Op Audio unable to be completed to date

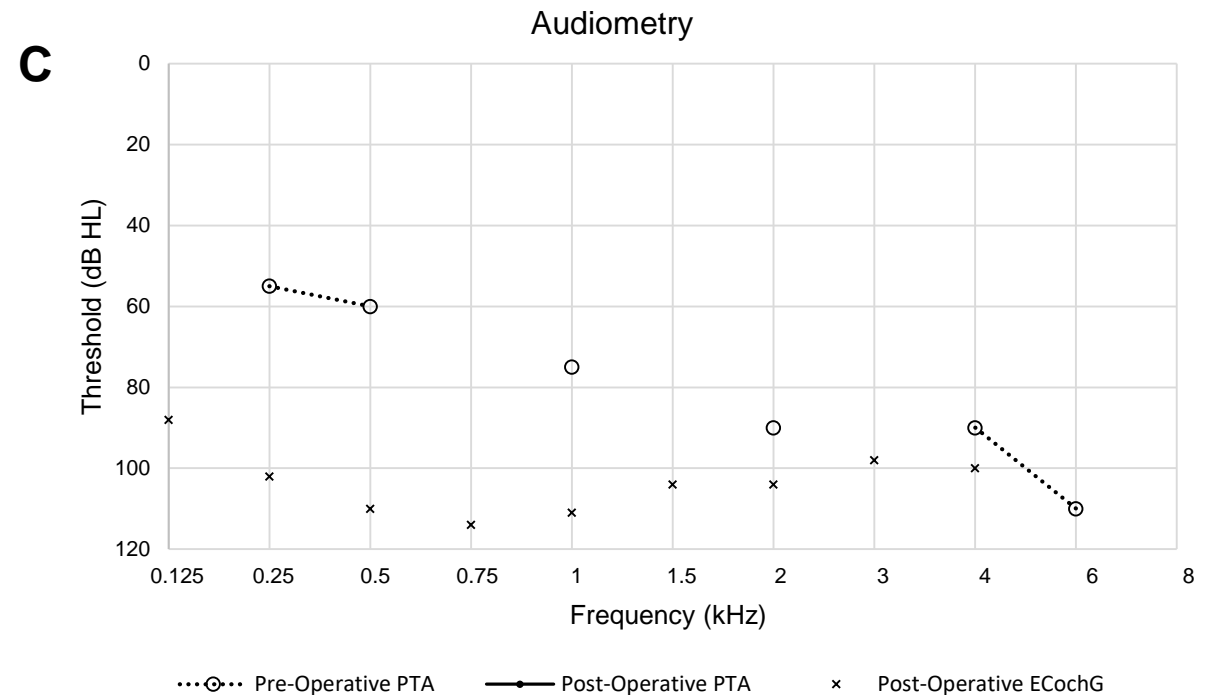
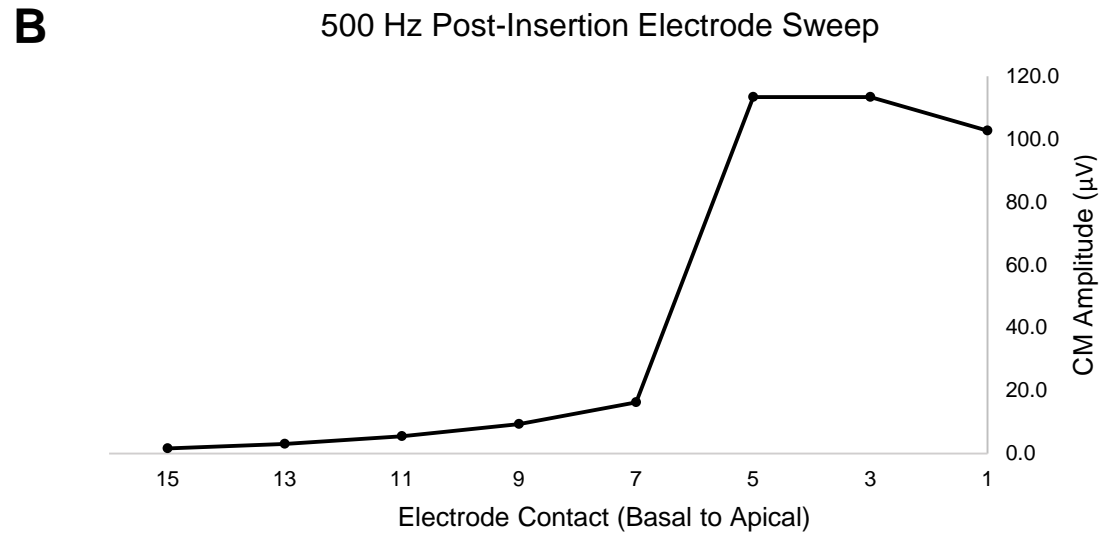
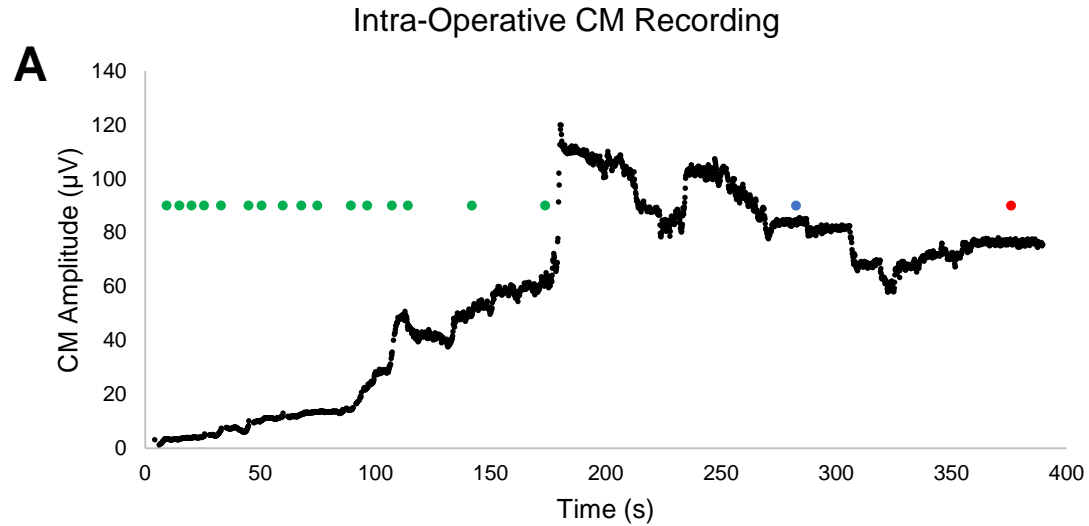
Supplemental Digital Content 1 - Figure

Ear 7 (See Table 1)

A) Intra-Operative CM trace – Electrode contacts entering RW marked (green = contact, blue = blue marker, red = electrode released)

B) Post-Insertion electrode scan CM Traces

C) Pre-Operative, Post-Operative and ECoChG predicted audiometry thresholds (most recent)



N.B. Post-Op Audio unable to be completed to date

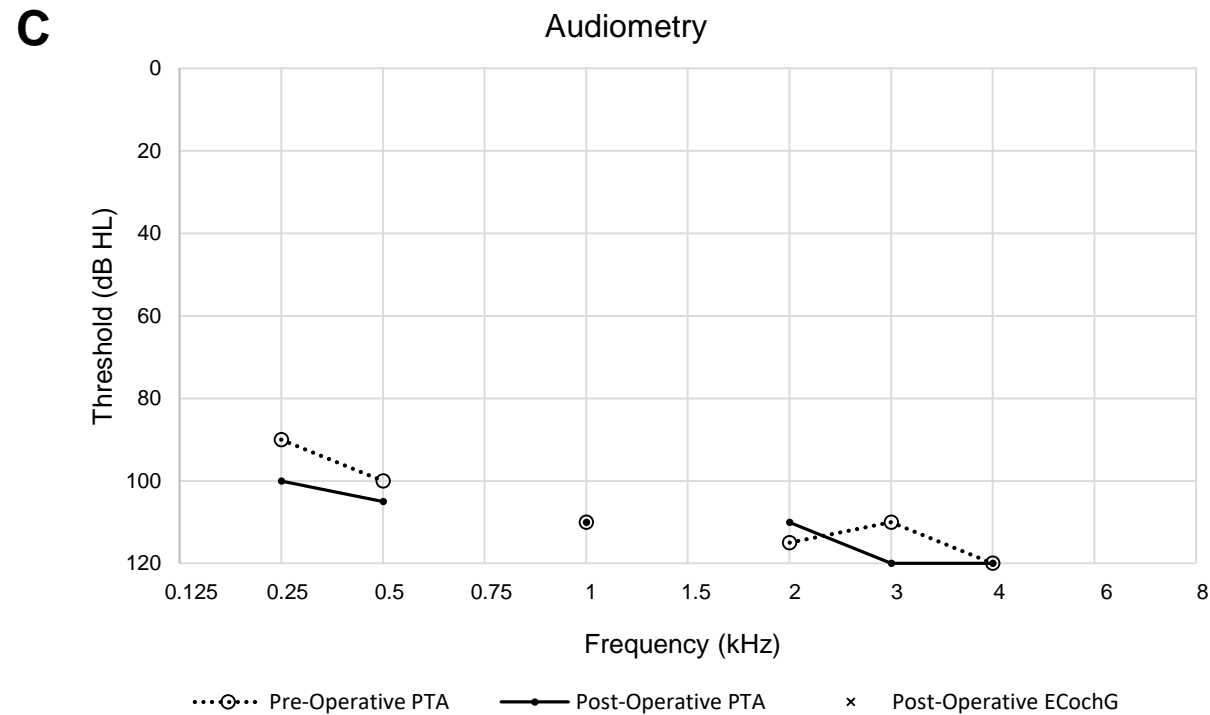
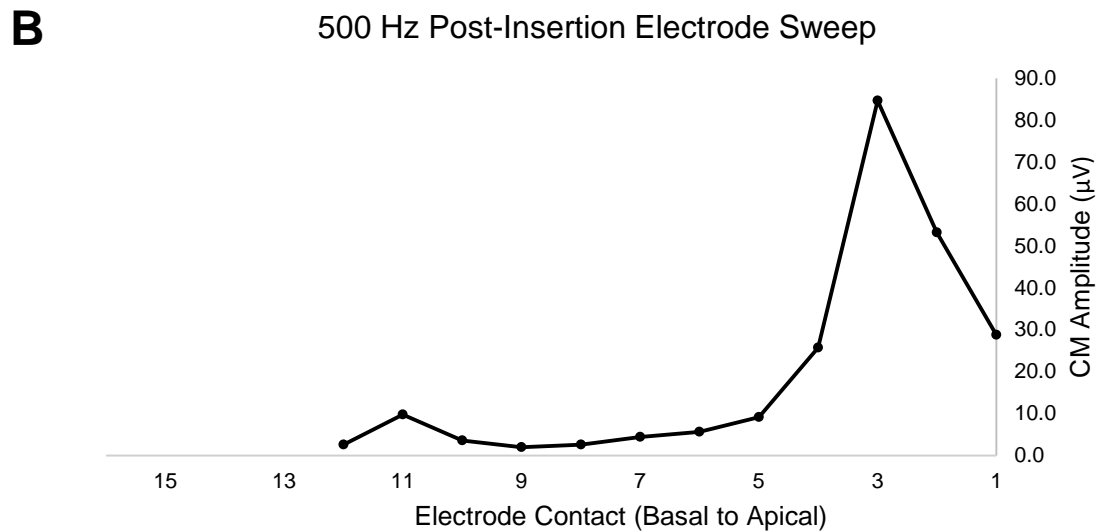
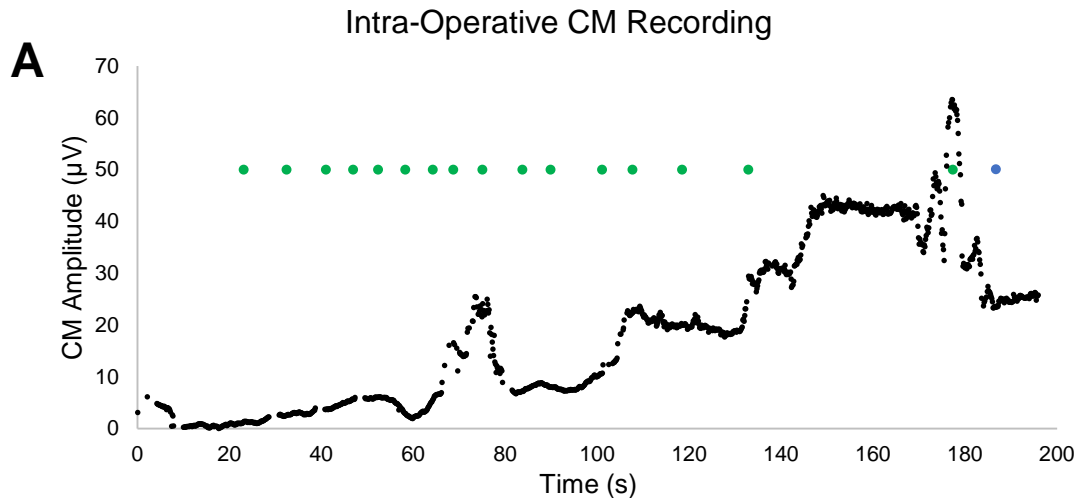
Supplemental Digital Content 1 - Figure

Ear 8 (See Table 1)

A) Intra-Operative CM trace – Electrode contacts entering RW marked (green = contact, blue = blue marker, red = electrode released)

B) Post-Insertion electrode scan CM Traces

C) Pre-Operative, Post-Operative and ECoChG predicted audiometry thresholds (most recent)



N.B. Post-Op ECoChG unable to be completed to date due to Otitis Externa & Covid-19 restrictions

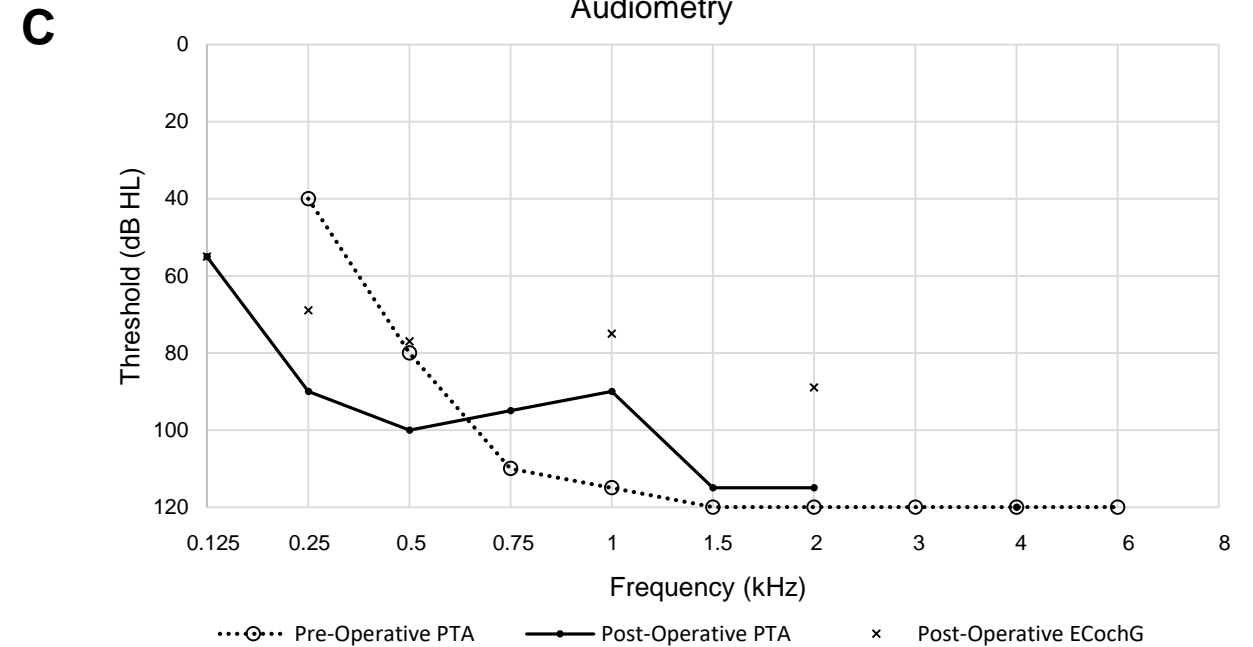
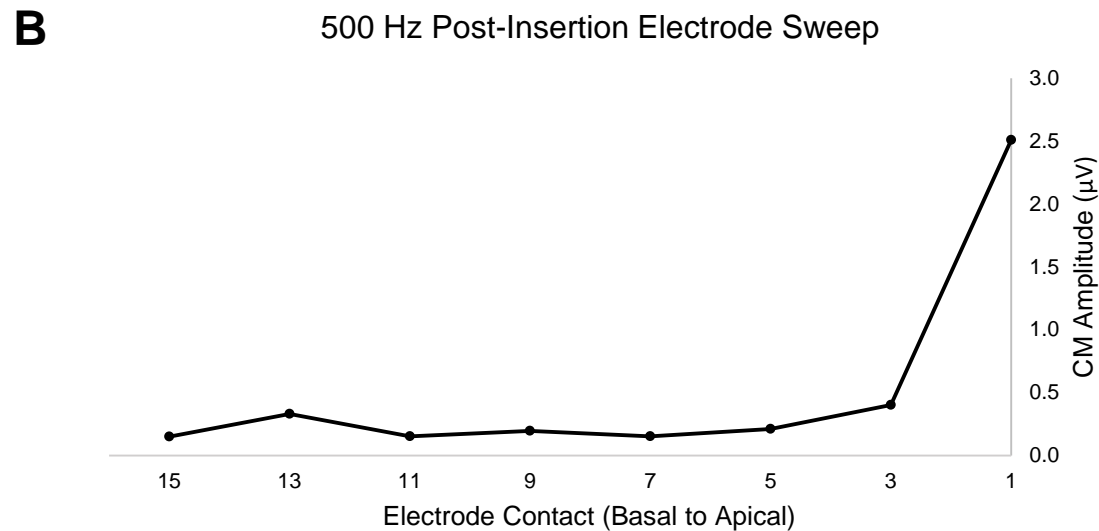
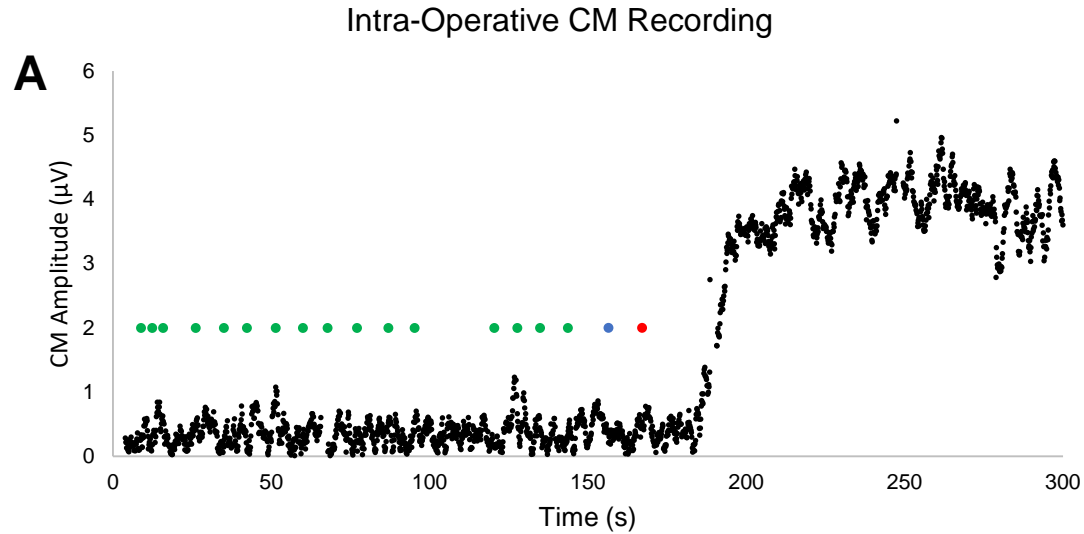
Supplemental Digital Content 1 - Figure

Ear 9 (See Table 1)

A) Intra-Operative CM trace – Electrode contacts entering RW marked (green = contact, blue = blue marker, red = electrode released)

B) Post-Insertion electrode scan CM Traces

C) Pre-Operative, Post-Operative and ECoChG predicted audiometry thresholds (most recent)



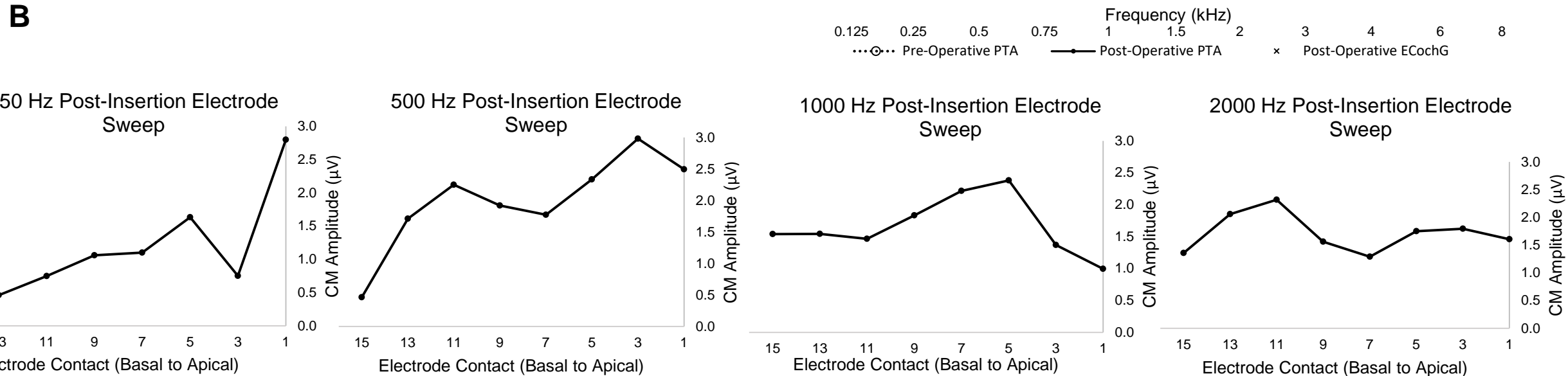
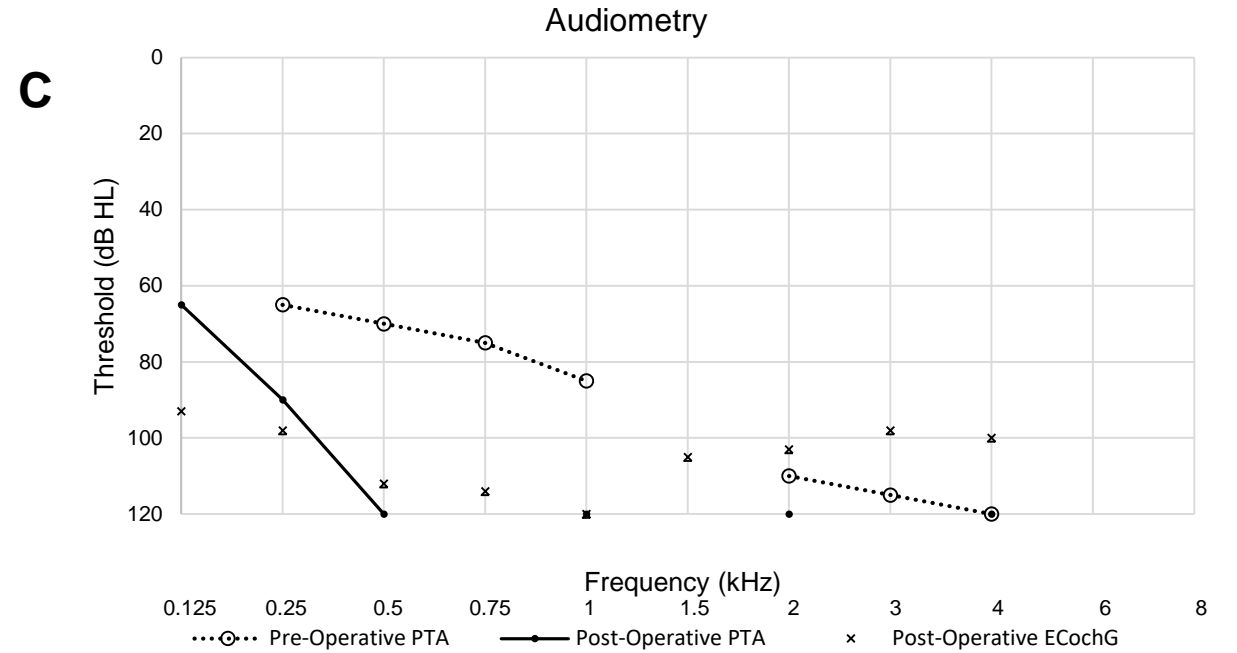
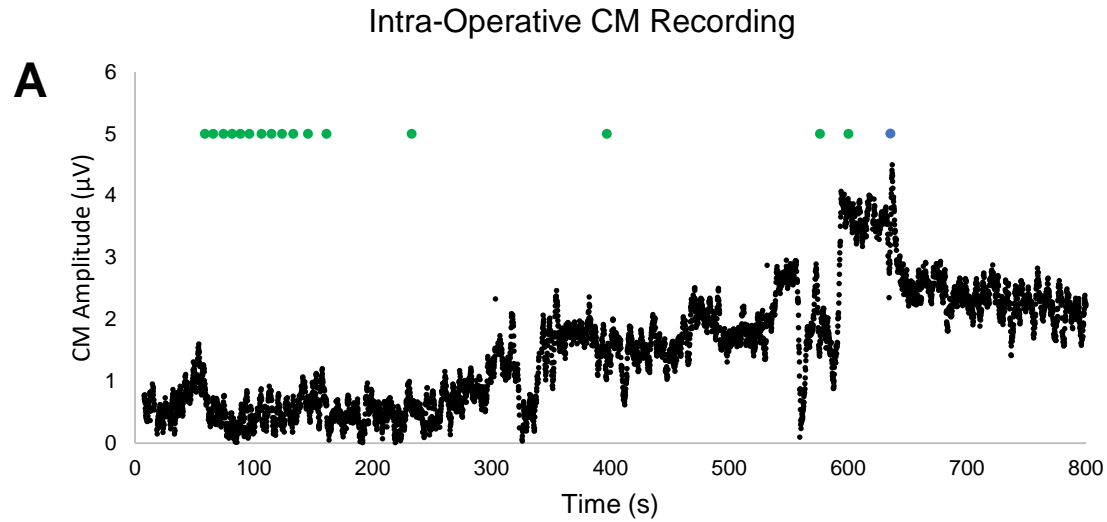
Supplemental Digital Content 1 - Figure

Ear 10 (See Table 1)

A) Intra-Operative CM trace – Electrode contacts entering RW marked (green = contact, blue = blue marker, red = electrode released)

B) Post-Insertion electrode scan CM Traces

C) Pre-Operative, Post-Operative and ECoChG predicted audiometry thresholds (most recent)



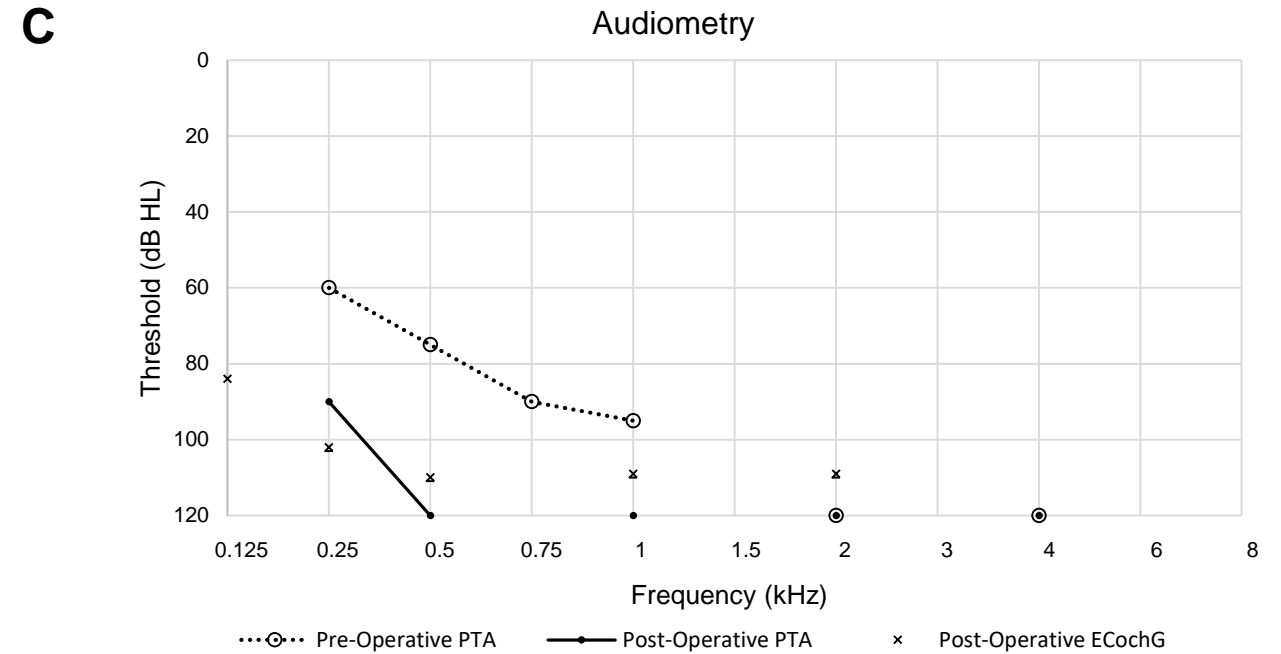
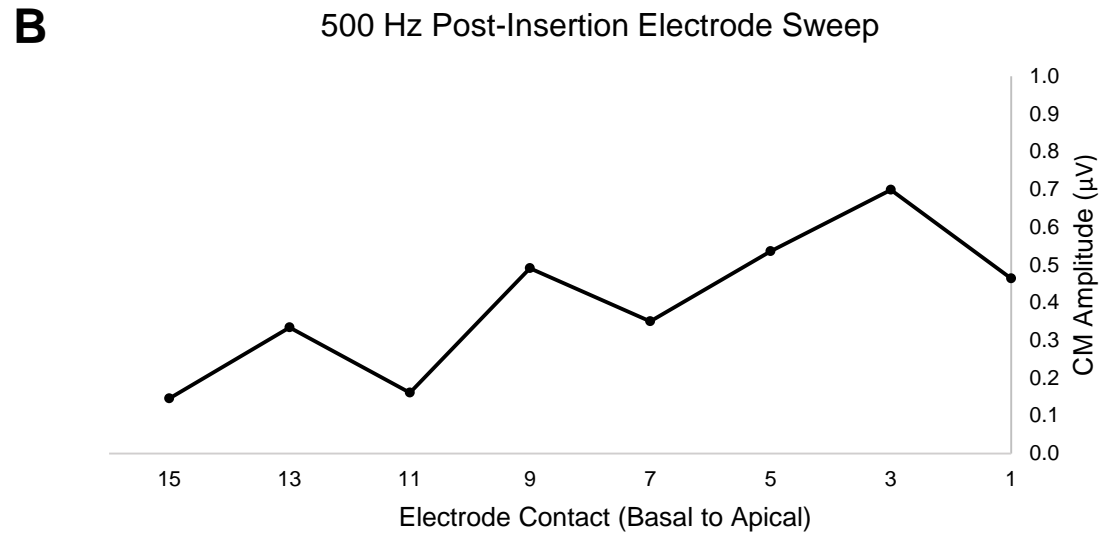
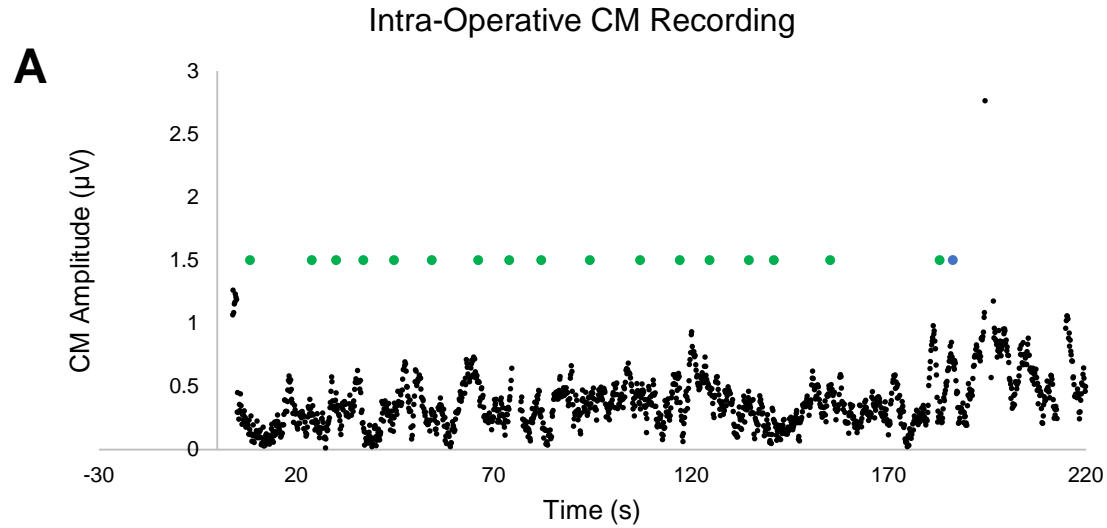
Supplemental Digital Content 1 - Figure

Ear 11 (See Table 1)

A) Intra-Operative CM trace – Electrode contacts entering RW marked (green = contact, blue = blue marker, red = electrode released)

B) Post-Insertion electrode scan CM Traces

C) Pre-Operative, Post-Operative and ECoChG predicted audiometry thresholds (most recent)



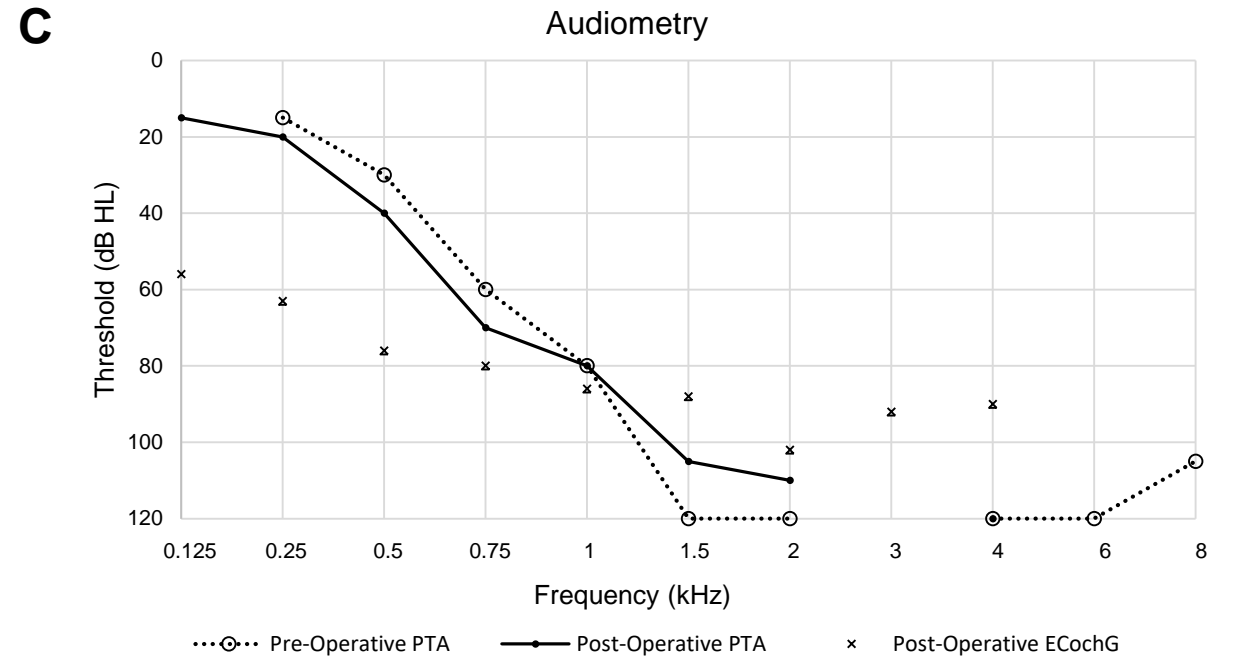
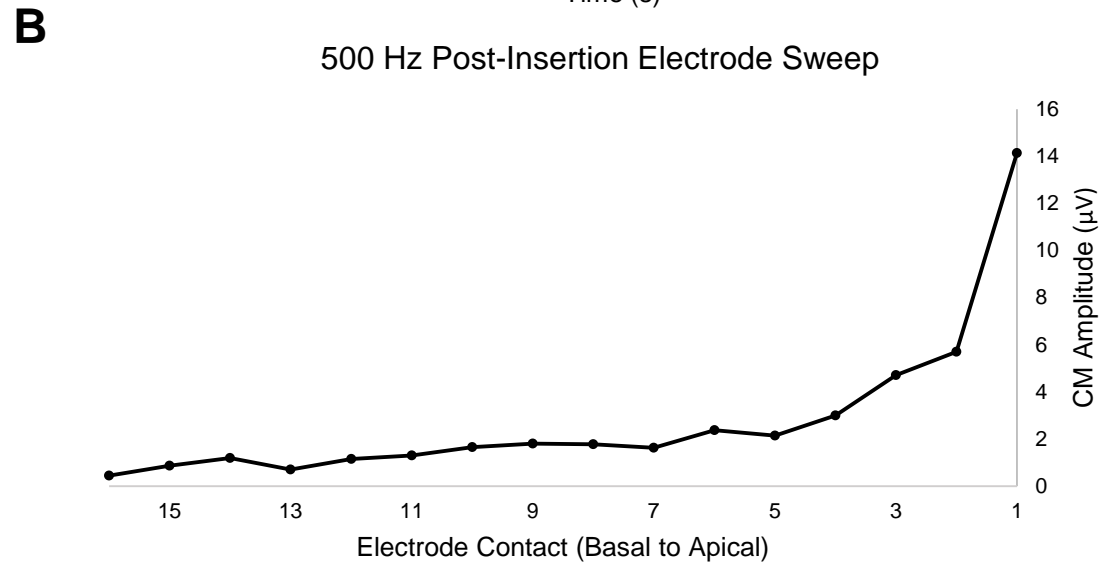
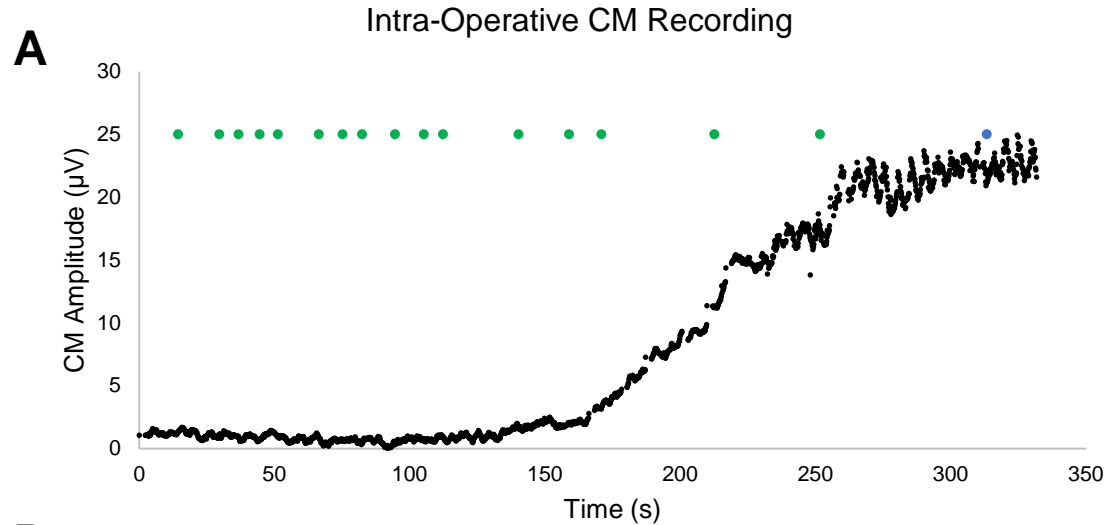
Supplemental Digital Content 1 - Figure

Ear 12 (See Table 1)

A) Intra-Operative CM trace – Electrode contacts entering RW marked (green = contact, blue = blue marker, red = electrode released)

B) Post-Insertion electrode scan CM Traces

C) Pre-Operative, Post-Operative and ECoChG predicted audiometry thresholds (most recent)



N.B. Post-Op ECoChG using plastic dome

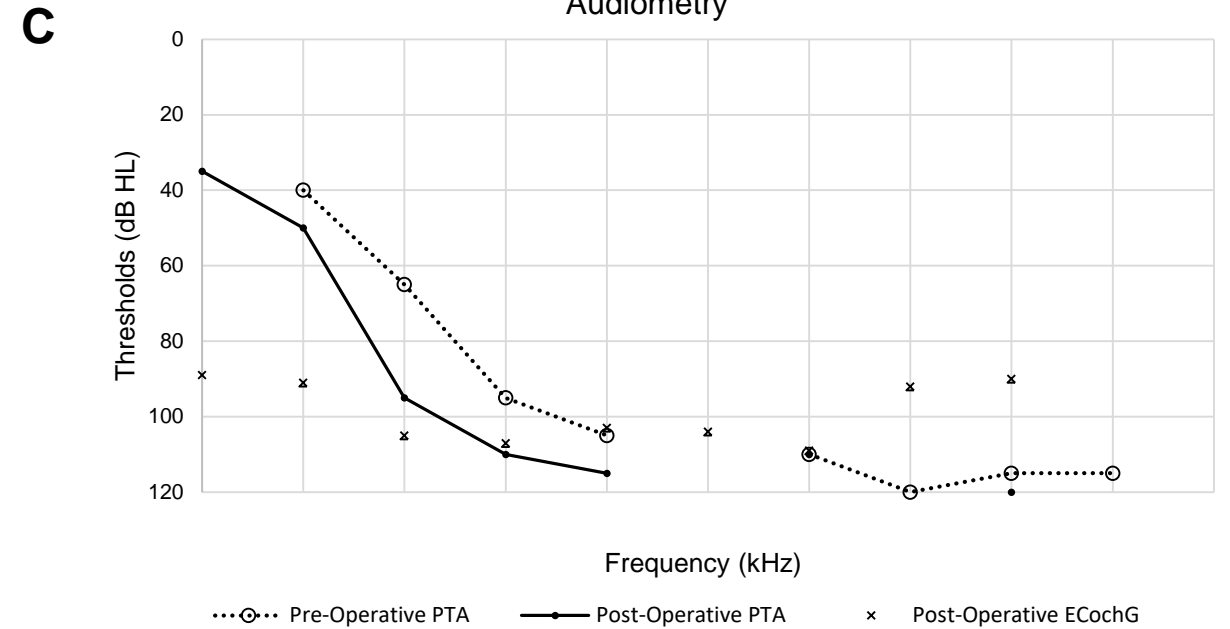
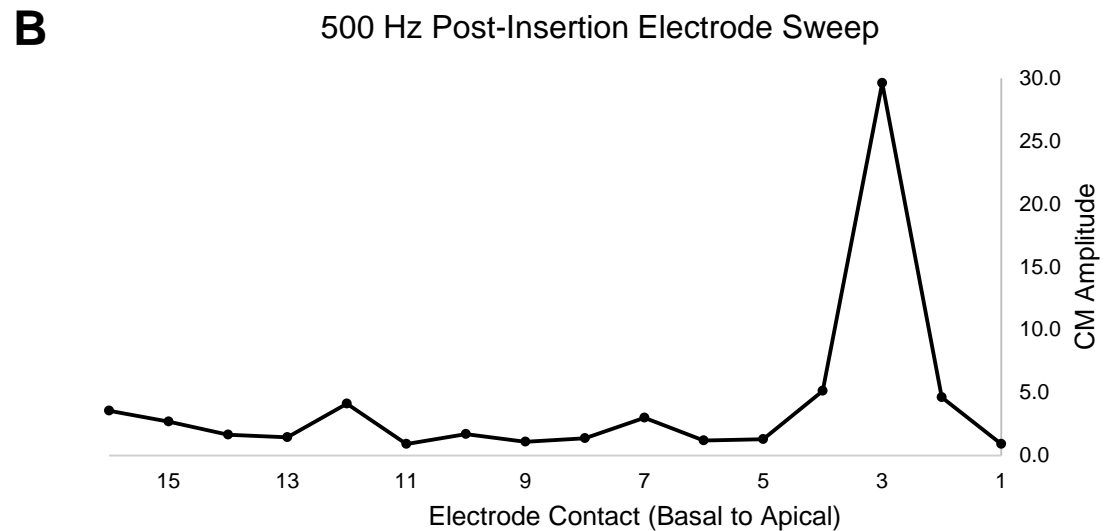
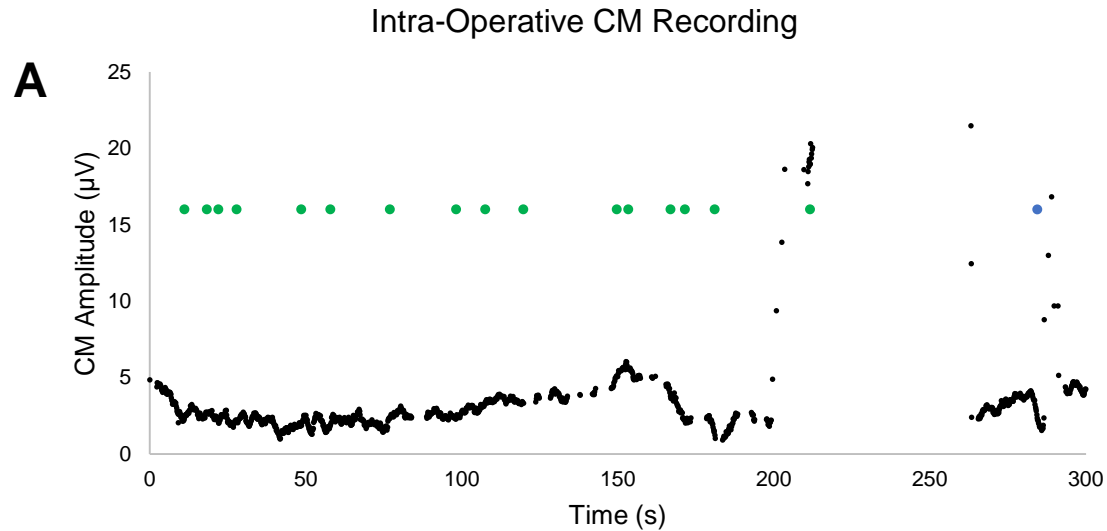
Supplemental Digital Content 1 - Figure

Ear 13 (See Table 1)

A) Intra-Operative CM trace – Electrode contacts entering RW marked (green = contact, blue = blue marker, red = electrode released)

B) Post-Insertion electrode scan CM Traces

C) Pre-Operative, Post-Operative and ECoChG predicted audiometry thresholds (most recent)



N.B. 1) Post-Op ECoChG using plastic dome
2) Lost magnetic coupling during intra-op ECoChG ~200-250s

Supplemental Digital Content 1 - Figure

Ear 14 (See Table 1)

A) Intra-Operative CM trace – Electrode contacts entering RW marked (green = contact, blue = blue marker, red = electrode released)

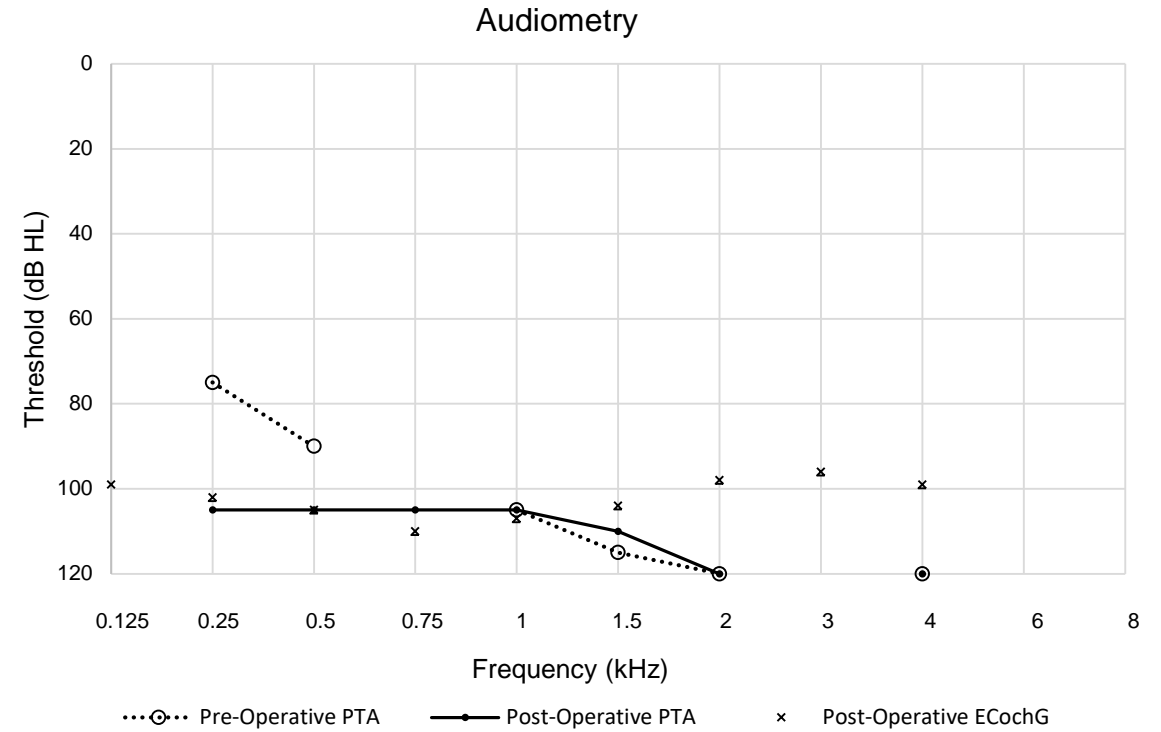
B) Post-Insertion electrode scan CM Traces

C) Pre-Operative, Post-Operative and ECoChG predicted audiometry thresholds (most recent)

A No Intra-Operative or Post-Insertion ECoChG signal detected – likely due to level of HL @ 500 Hz

B

C



Supplemental Digital Content 1 - Figure

Ear 15 (See Table 1)

A) Intra-Operative CM trace – Electrode contacts entering RW marked (green = contact, blue = blue marker, red = electrode released)

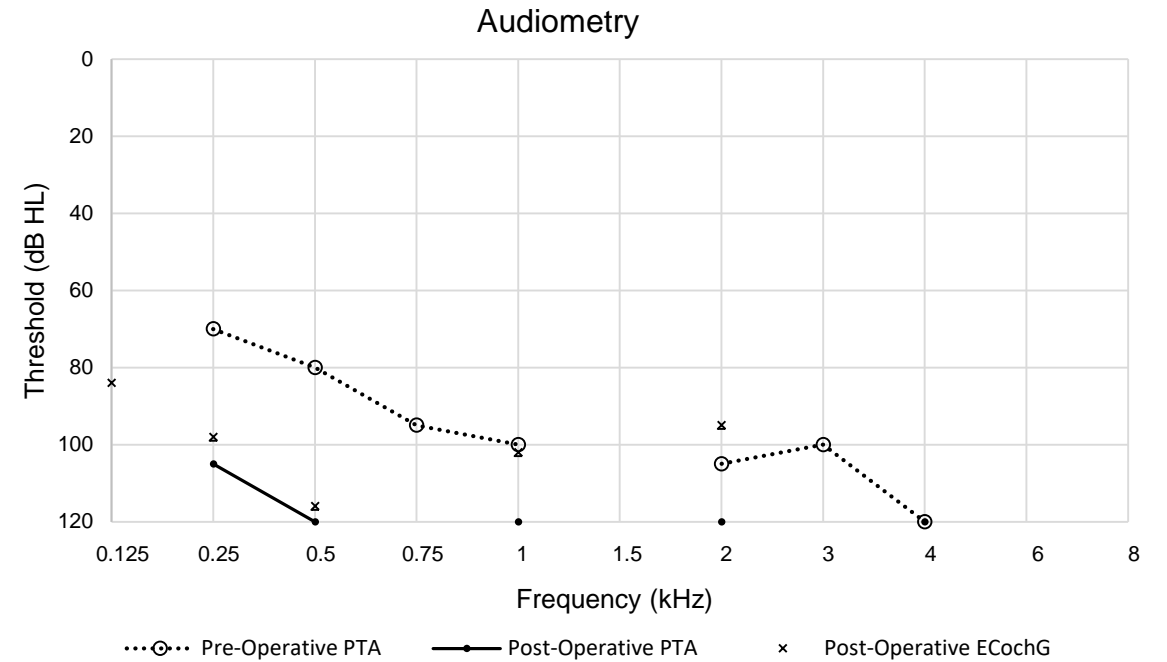
B) Post-Insertion electrode scan CM Traces

C) Pre-Operative, Post-Operative and ECoChG predicted audiometry thresholds (most recent)

A N/A Participant only in Post-Operative testing

B

C



Supplemental Digital Content 1 - Figure

Ear 16 (See Table 1)

A) Intra-Operative CM trace – Electrode contacts entering RW marked (green = contact, blue = blue marker, red = electrode released)

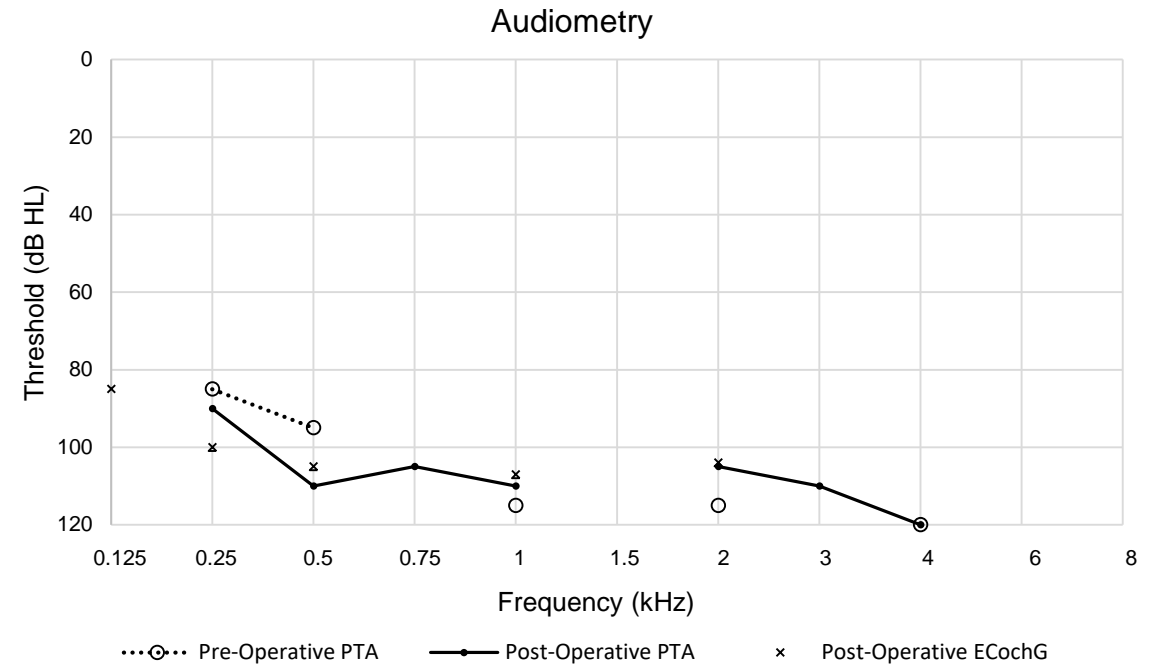
B) Post-Insertion electrode scan CM Traces

C) Pre-Operative, Post-Operative and ECoChG predicted audiometry thresholds (most recent)

A N/A Participant only in Post-Operative testing

B

C



Supplemental Digital Content 1 - Figure

Ear 17 (See Table 1)

A) Intra-Operative CM trace – Electrode contacts entering RW marked (green = contact, blue = blue marker, red = electrode released)

B) Post-Insertion electrode scan CM Traces

C) Pre-Operative, Post-Operative and ECoChG predicted audiometry thresholds (most recent)

A N/A Participant only in Post-Operative testing

B

C

