

## Supplementary information

### Appendix

# Ambient air pollution and prostate cancer in a population-based Canadian case-control study

Leslie Michele-Ange Kouam <sup>a, b</sup>, Marie-Elise Parent <sup>c, d, e</sup>, Perry Hystad <sup>f</sup>, Paul J Villeneuve <sup>a</sup>

<sup>a</sup> Department of Neuroscience, Carleton University, Ottawa, ON, Canada K1S 5B6

<sup>b</sup> University of Bordeaux, ISPED, Bordeaux, France

<sup>c</sup> Epidemiology and Biostatistics Unit, Centre Armand-Frappier Santé Biotechnologie, Institut national de la recherche scientifique, Université du Québec, Laval, Quebec, Canada

<sup>d</sup> Department of Social and Preventive Medicine, School of Public Health, Université de Montréal, Montreal, Quebec, Canada

<sup>e</sup> Centre de recherche du CHUM, Montreal, Quebec, Canada

<sup>f</sup> College of Public Health and Human Sciences, Oregon State University, Corvallis, OR, USA

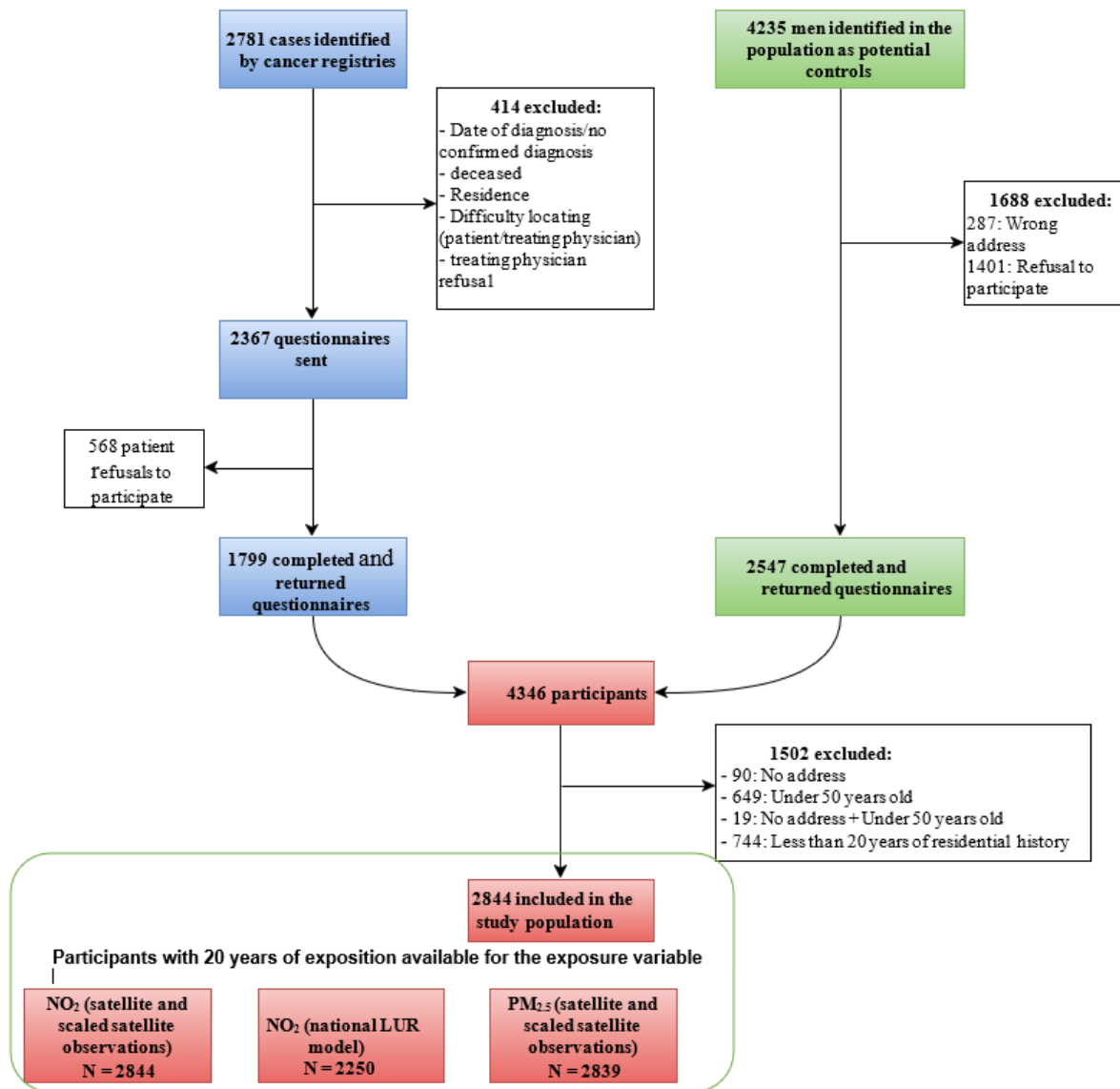


Figure S1. Flow-chart of study population

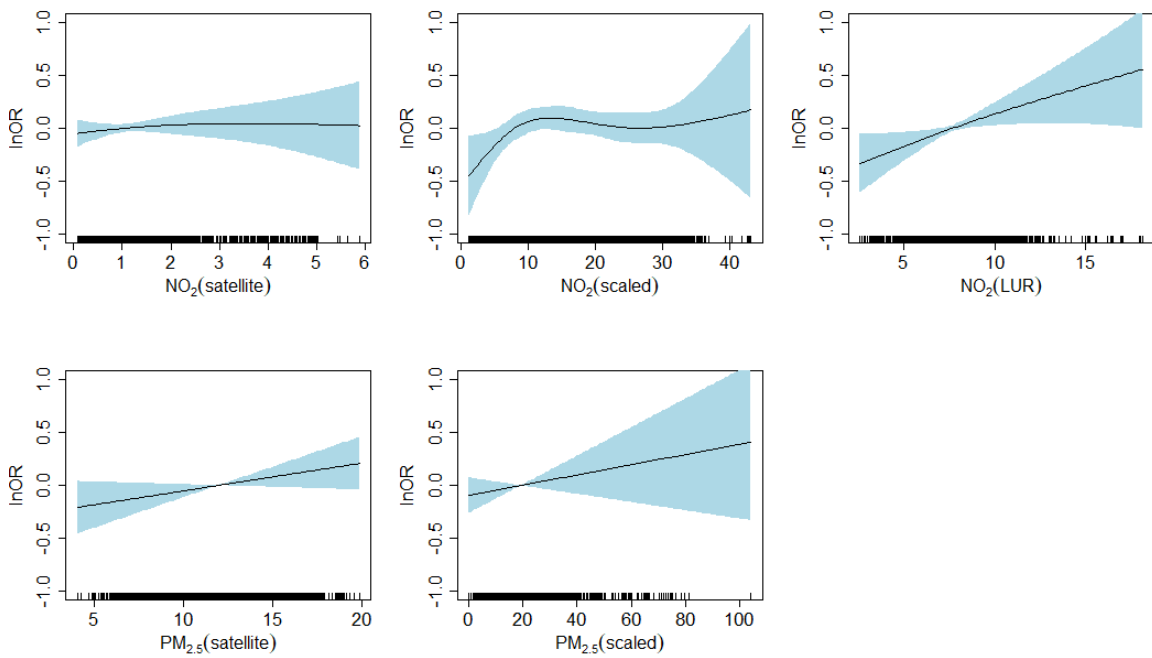


Figure S2a. Exposure-response curves for the relationship between air pollutant concentrations (solid line) and 95% CI (blue shade) over the period from 1975 to 1994 and prostate cancer generated obtained using cubic smoothing splines at 4 df (model 1).

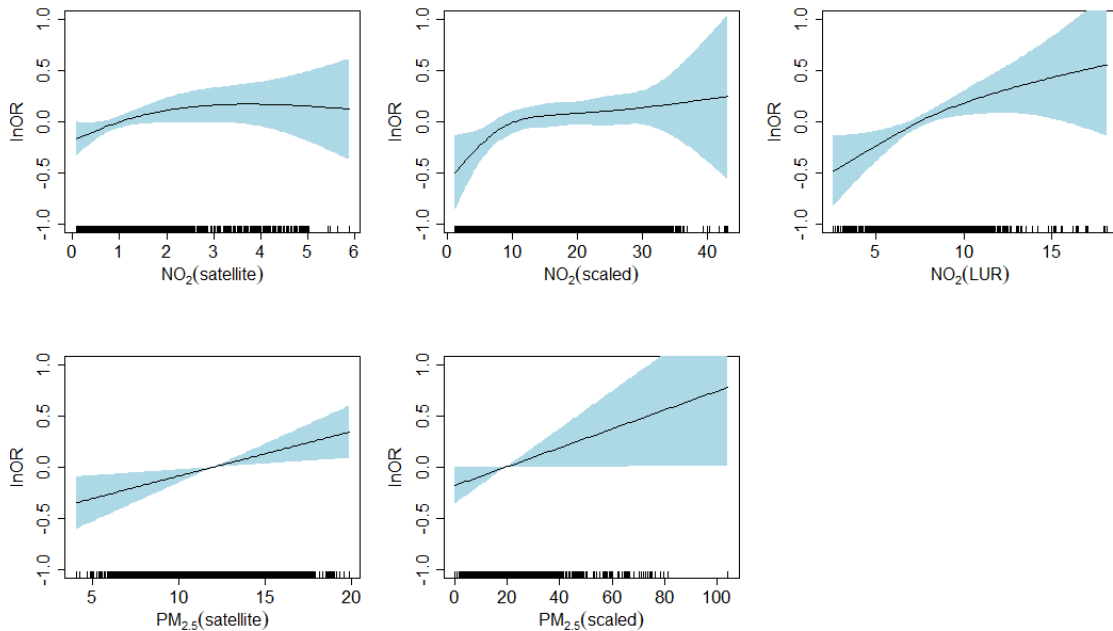


Figure S2b. Exposure-response curves for the relationship between air pollutant concentrations (solid line) and 95% CI (blue shade) over the period from 1975 to 1994 and prostate cancer generated obtained using cubic smoothing splines at 4 df (model 2).

Table S1a. Relationship between prostate cancer risk and having lived near a highway or/and a major road. Unconditional logistic regression on imputed data. Case-control study, NECSS, Canada 1994-1997.

Variable	N	Model 1 * RC (IC 95%)	Model 2 ** RC (IC 95%)	Model 3 *** RC (IC 95%)
<b>Have lived near a highway and/or major road</b>	2 844			
– Never		Ref.	Ref.	Ref.
– Others		1.07 (0.91 -1.25)	1.11 (0.94 -1.30)	1.15 (0.97 -1.38)

\*Model 1 adjusted for age and province.

\*\*Model 2 adjusted for: age, province, ethnicity, smoking status, alcohol, BMI, years of education, moderate physical activity, strenuous physical activity, total caloric intake, exposure to pesticides and exposure to cadmium

\*\*\*Model 3 adjusted for: model 2 variables, neighborhood SSE index and residential surrounding greenness.

Table S1b. Relationship between prostate cancer risk and having lived near a highway or/and a major road. Unconditional logistic regression on complete data. Case-control study, NECSS, Canada 1994-1997.

Variable	N	Model 1 * RC (IC 95%)	N	Model 2 ** RC (IC 95%)	N	Model 3 *** RC (IC 95%)
<b>Have lived near a highway and/or major road</b>	2 838		2 735		2 031	
– Never		Ref.		Ref.		Ref.
– Others		1.07 (0.91 -1.26)		1.12 (0.95-1.32)		1.09 (0.89-1.32)

\*Model 1 adjusted for age and province.

\*\*Model 2 adjusted for: age, province, ethnicity, pack-years, alcohol, BMI, years of education, moderate physical activity, strenuous physical activity, total caloric intake, exposure to pesticides and exposure to cadmium

\*\*\*Model 3 adjusted for: model 2 variables, neighborhood SSE index and residential surrounding greenness.

Table S2. Association between ambient concentrations of NO<sub>2</sub> and PM<sub>2.5</sub> around residences and incidence of prostate cancer according to interquartile range increases, 1975-1994 (complete data).

Variables	N	Model 1 * OR (95% CI)	N	Model 2 ** OR (95% CI)	N	Model 3 *** OR (95% CI)
<b>NO<sub>2</sub> exposure estimates (ppb). for an increase equal to the IQR<sup>a</sup></b>						
NO <sub>2</sub> (Satellite)	2,838	1.03 (0.92-1.15)	2,735	1.09 (0.97-1.23)	2,031	1.07 (0.93-1.22)
NO <sub>2</sub> (Scaled)	2,838	1.07 (0.92-1.25)	2,735	1.19 (1.01-1.40)	2,031	1.18 (0.97-1.43)
NO <sub>2</sub> (National LUR)	2,247	1.08 (0.95-1.23)	2,165	1.15 (1.00-1.32)	2,031	1.19 (1.02-1.38)
<b>PM<sub>2.5</sub> exposure estimates (µg/m<sup>3</sup>). for an increase equal to the IQR<sup>b</sup></b>						
PM <sub>2.5</sub> (Satellite)	2,833	1.23 (1.04-1.45)	2,730	1.31 (1.10-1.55)	2,031	1.27 (1.03-1.57)
PM <sub>2.5</sub> (Scaled)	2,833	1.12 (0.98-1.29)	2,730	1.23 (1.07-1.42)	2,031	1.21 (1.01-1.45)

\* Model 1 adjusted for age and province.

\*\* Model 2 adjusted for: age, province, ethnicity, pack-years, alcohol, BMI, years of education, moderate physical activity, strenuous physical activity, total caloric intake, exposure to pesticides and exposure to cadmium

\*\*\* Model 3 adjusted for: model 2 variables, neighborhood SSE index and residential surrounding greenness.

IQR<sup>a</sup> =interquartile range: 1.45 ppb for satellite NO<sub>2</sub>, 15.18 for scaled NO<sub>2</sub> and 15.39 for national LUR NO<sub>2</sub>.

IQR<sup>b</sup> =interquartile range: 3.56 ppb for satellite PM<sub>2.5</sub> and 4.48 for scaled PM<sub>2.5</sub>.

Table S3. Association between ambient concentrations of NO<sub>2</sub> and PM<sub>2.5</sub> around residences and incidence of prostate cancer according to interquartile range increases, restricted analysis on those lived in urban areas, 1975-1994 (imputed data).

Variables	N	Model 1 *	Model 2 **	Model 3 **
		OR (CI 95%)	OR (CI 95%)	OR (CI 95%)
<b>NO<sub>2</sub> exposure estimates (ppb). for an increase equal to the IQR<sup>a</sup></b>				
NO <sub>2</sub> (Satellite)	2 159	1.03 (0.91-1.17)	1.10 (0.97-1.25)	1.10 (0.96-1.26)
NO <sub>2</sub> (Scaled)	2 159	1.11 (0.93-1.32)	1.26 (1.05-1.50)	1.27 (1.05-1.54)
NO <sub>2</sub> (national LUR)	1 897	1.13 (0.98-1.31)	1.21 (1.04-1.40)	1.24 (1.07-1.45)
<b>PM<sub>2.5</sub> exposure estimates (µg/m<sup>3</sup>). for an increase equal to the IQR<sup>b</sup></b>				
PM <sub>2.5</sub> (Satellite)	2 154	1.25 (1.03-1.52)	1.31 (1.08-1.60)	1.31 (1.07-1.60)
PM <sub>2.5</sub> (Scaled)	2 154	1.12 (0.95-1.31)	1.21 (1.03-1.43)	1.21 (1.02-1.44)

\* Model 1 adjusted for age and province.

\*\* Model 2 adjusted for: age, province, ethnicity, pack years, alcohol, BMI, years of education, moderate physical activity, strenuous physical activity, total caloric intake, exposure to pesticides and exposure to cadmium

\*\*\* Model 3 adjusted for: model 2 variables, neighborhood SSE index and residential surrounding greenness.

IQR<sup>a</sup> =interquartile range: 1.61 ppb for satellite NO<sub>2</sub>, 16.04 for scaled NO<sub>2</sub> and 15.02 for national LUR NO<sub>2</sub>.

IQR<sup>b</sup> =interquartile range: 3.59 ppb for satellite PM<sub>2.5</sub> and 4.28 for scaled PM<sub>2.5</sub>.