

--	--	--	--

Number

# Survey of Airway Assessment Practice

We would be most grateful if you could spare a few minutes to tell us about your practice in assessing the airway prior to anaesthesia. Please tick the one box out of each five that represents your usual practice best. Return the questionnaire to Dr Duncan McPherson, via the reception, once you have finished.

How many years of anaesthetic experience do you have?

Which country do you work in?

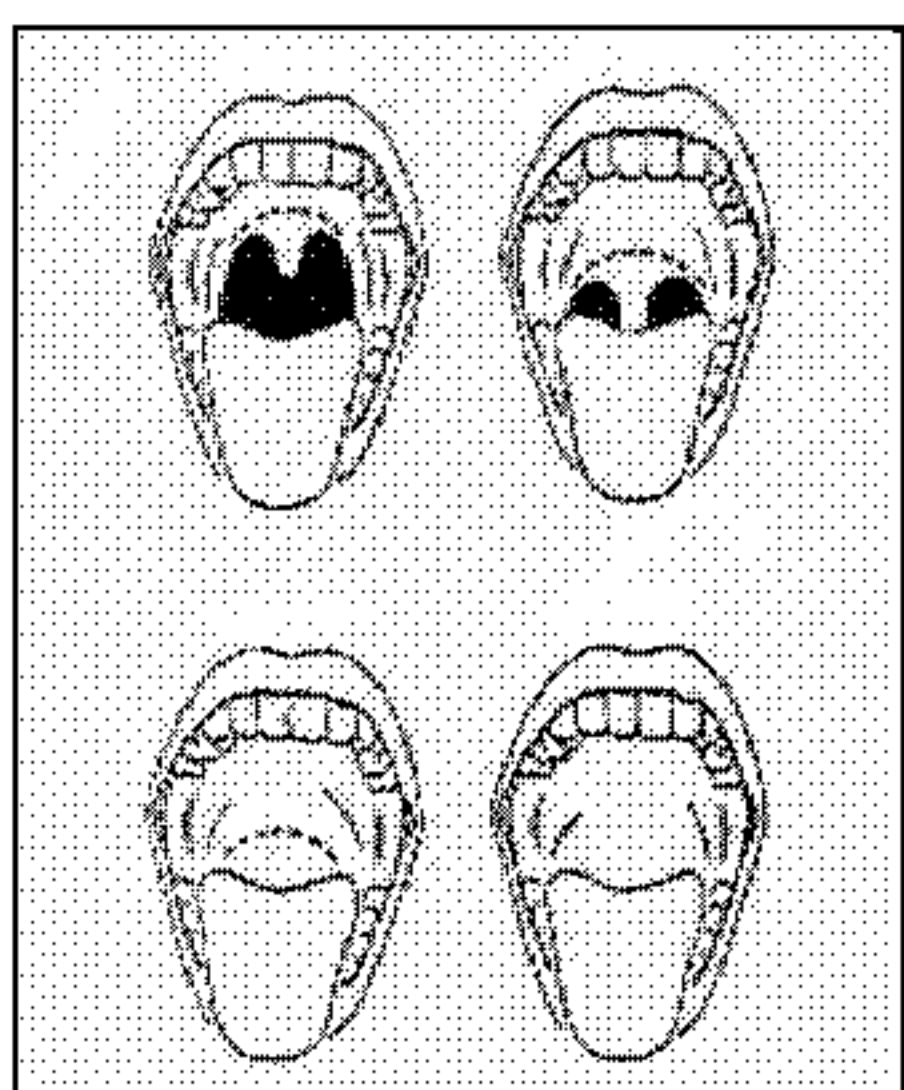
## Mouth Opening

How often do you use this test?

never  occasionally  sometimes  regularly  always

How useful is this test?

useless  little  somewhat  very  extremely



## Mallampati Score

How often do you use this test?

never  occasionally  sometimes  regularly  always

How useful is this test?

useless  little  somewhat  very  extremely

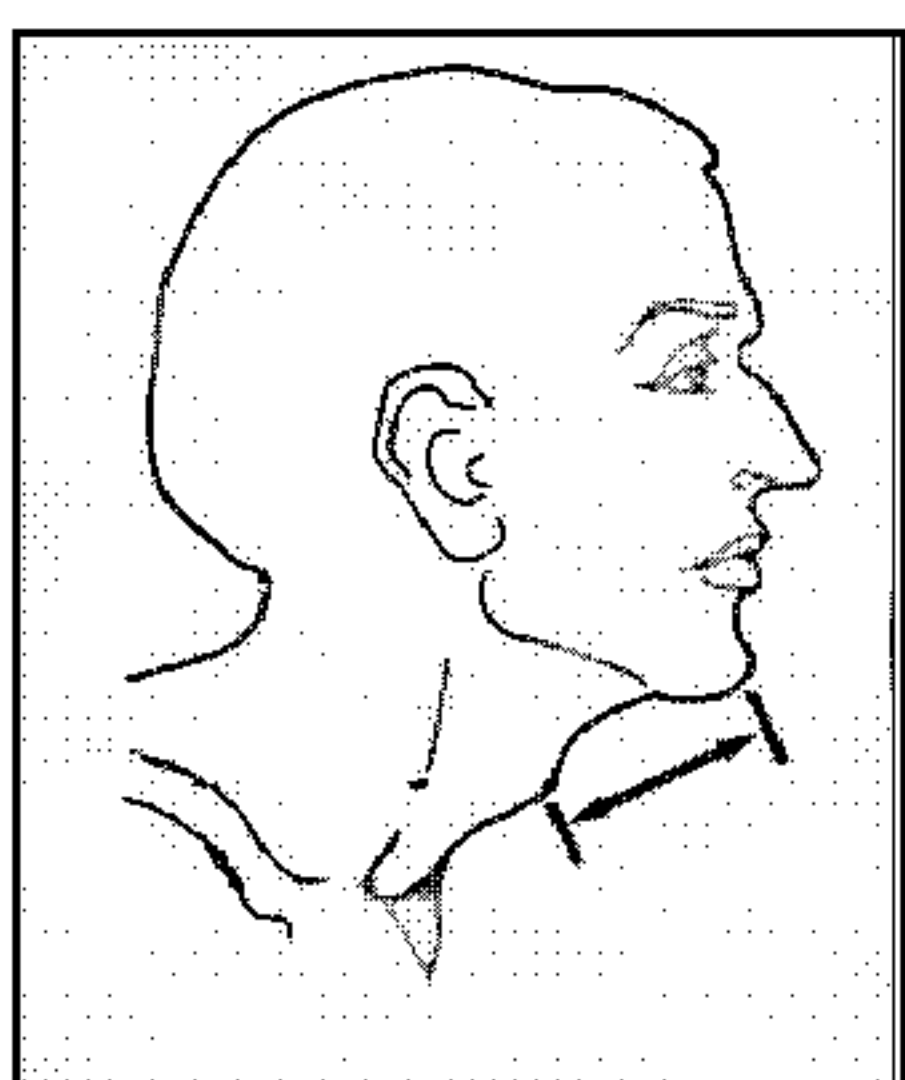
## Forward Thrust Mandible

How often do you use this test?

never  occasionally  sometimes  regularly  always

How useful is this test?

useless  little  somewhat  very  extremely



## Thyromental distance

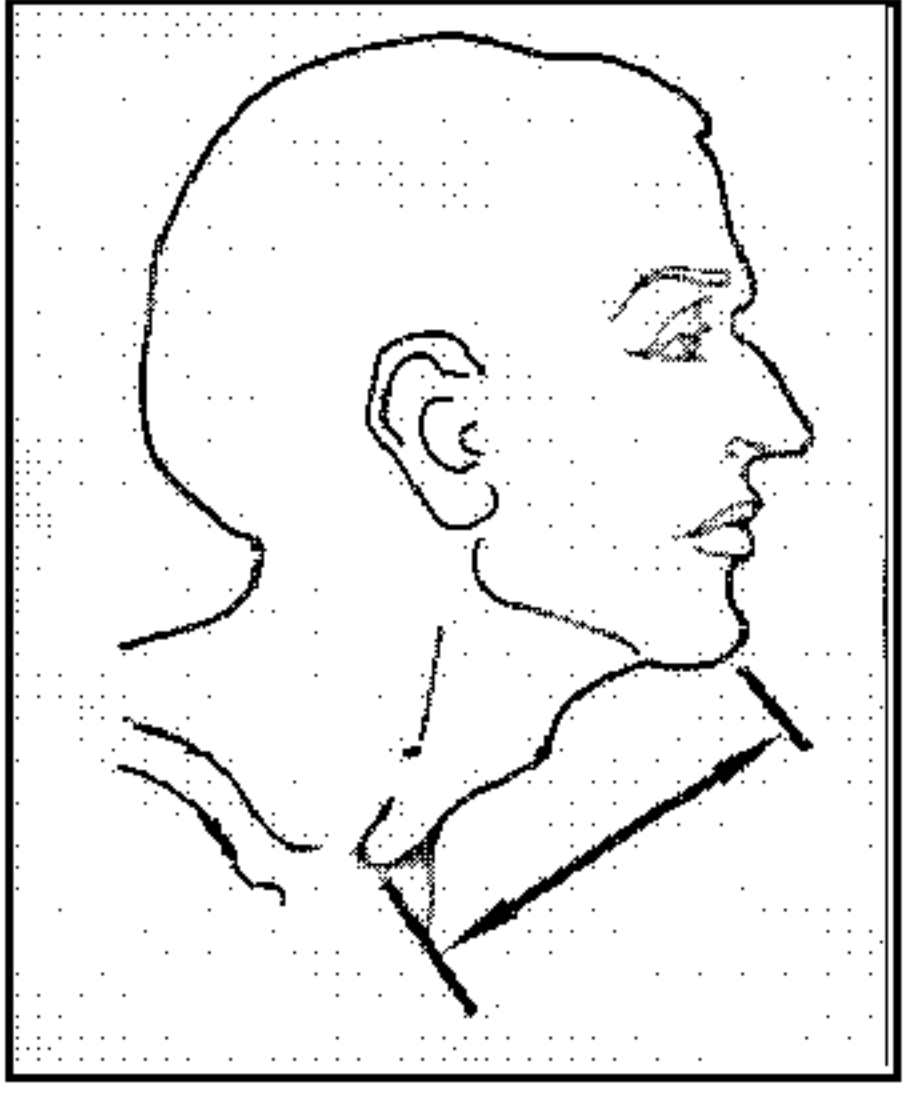
How often do you use this test?

never  occasionally  sometimes  regularly  always

How useful is this test?

useless  little  somewhat  very  extremely





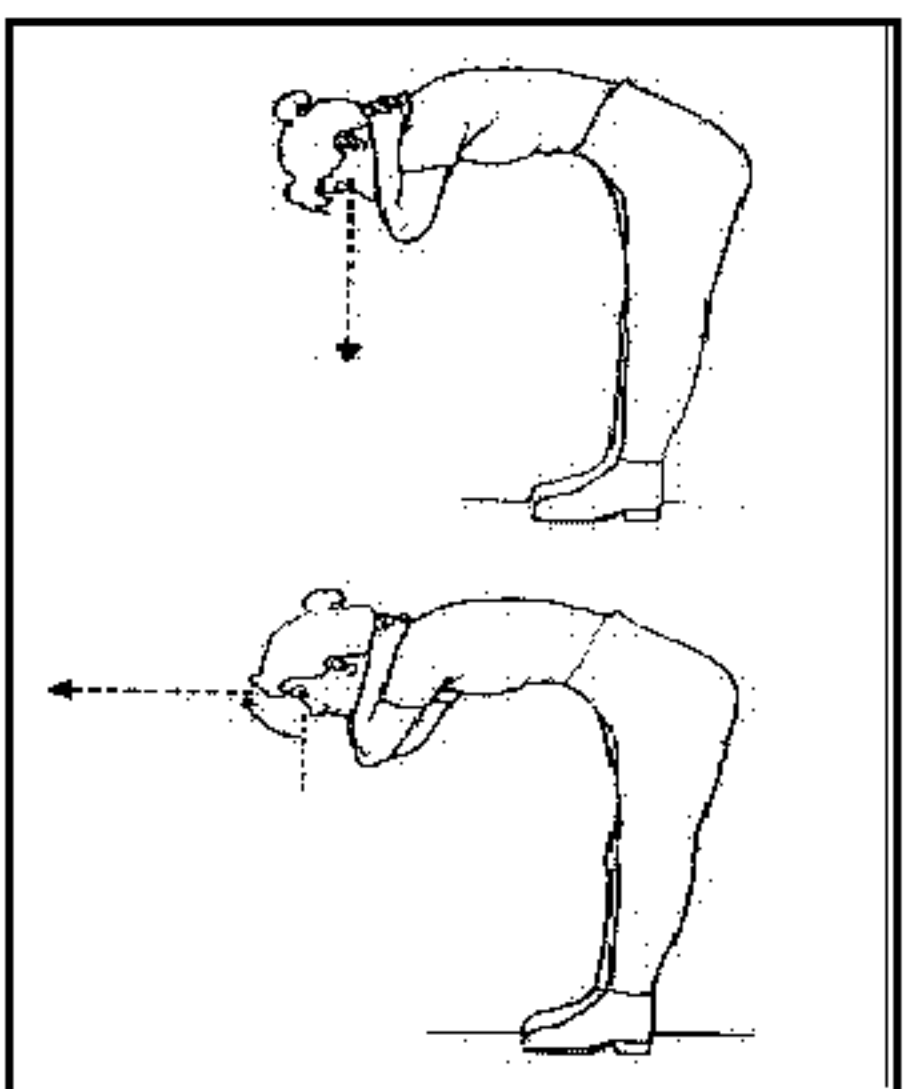
### Sternomental distance

How often do you use this test?

never  occasionally  sometimes  regularly  always

How useful is this test?

useless  little  somewhat  very  extremely



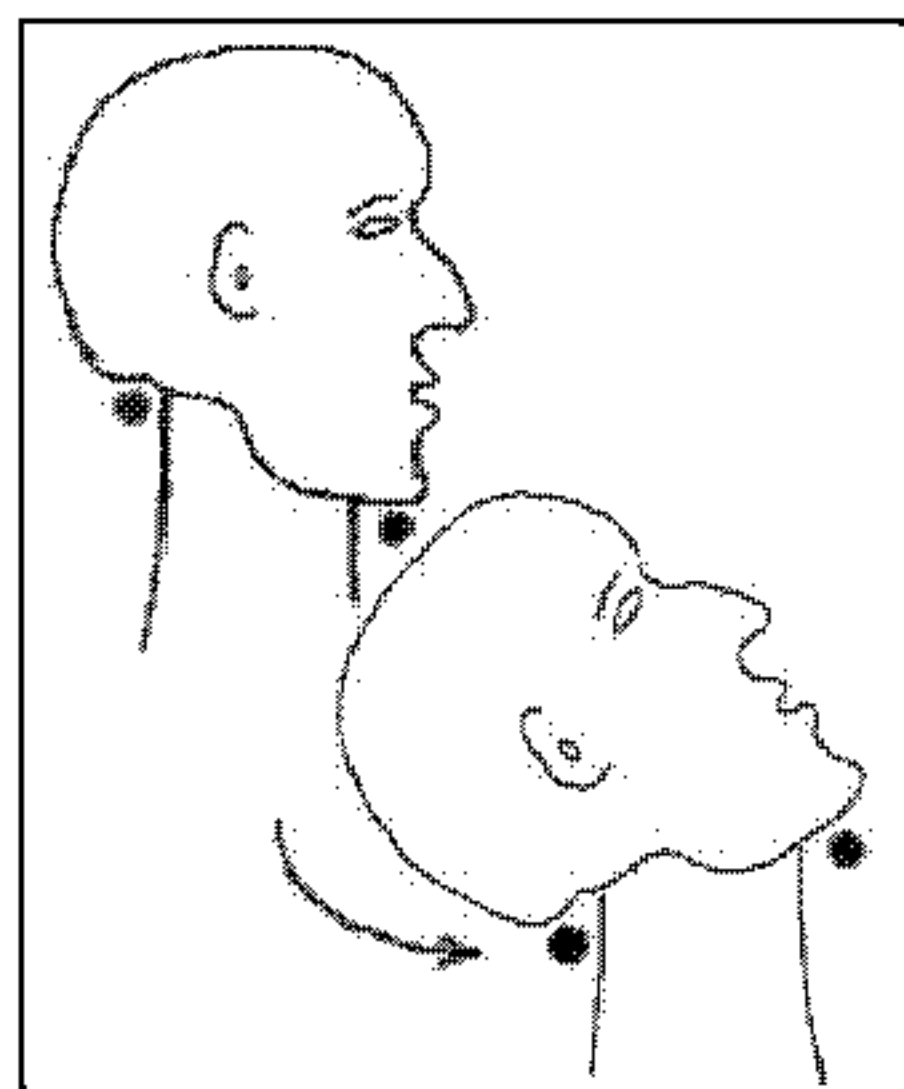
### Nodding donkey test

How often do you use this test?

never  occasionally  sometimes  regularly  always

How useful is this test?

useless  little  somewhat  very  extremely



### Dalalkin warning sign

How often do you use this test?

never  occasionally  sometimes  regularly  always

How useful is this test?

useless  little  somewhat  very  extremely

Risk factor	Risk level
Weight	0 1 2
H+N invt	0 1 2
Jaw mvt.	0 1 2
Mandible	0 1 2
Buckteeth	0 1 2

### Wilson risk score

How often do you use this test?

never  occasionally  sometimes  regularly  always

How useful is this test?

useless  little  somewhat  very  extremely





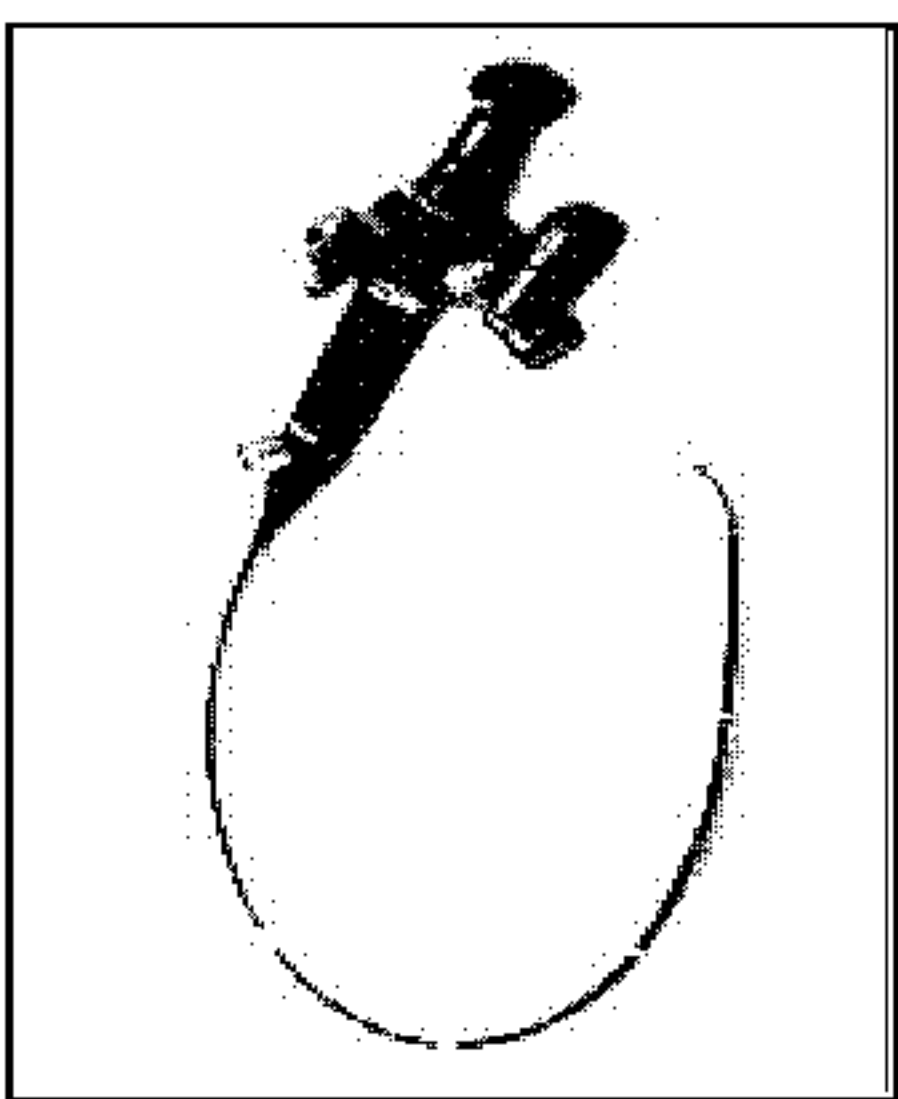
### Indirect mirror laryngoscopy

How often do you use this test?

never  occasionally  sometimes  regularly  always

How useful is this test?

useless  little  somewhat  very  extremely



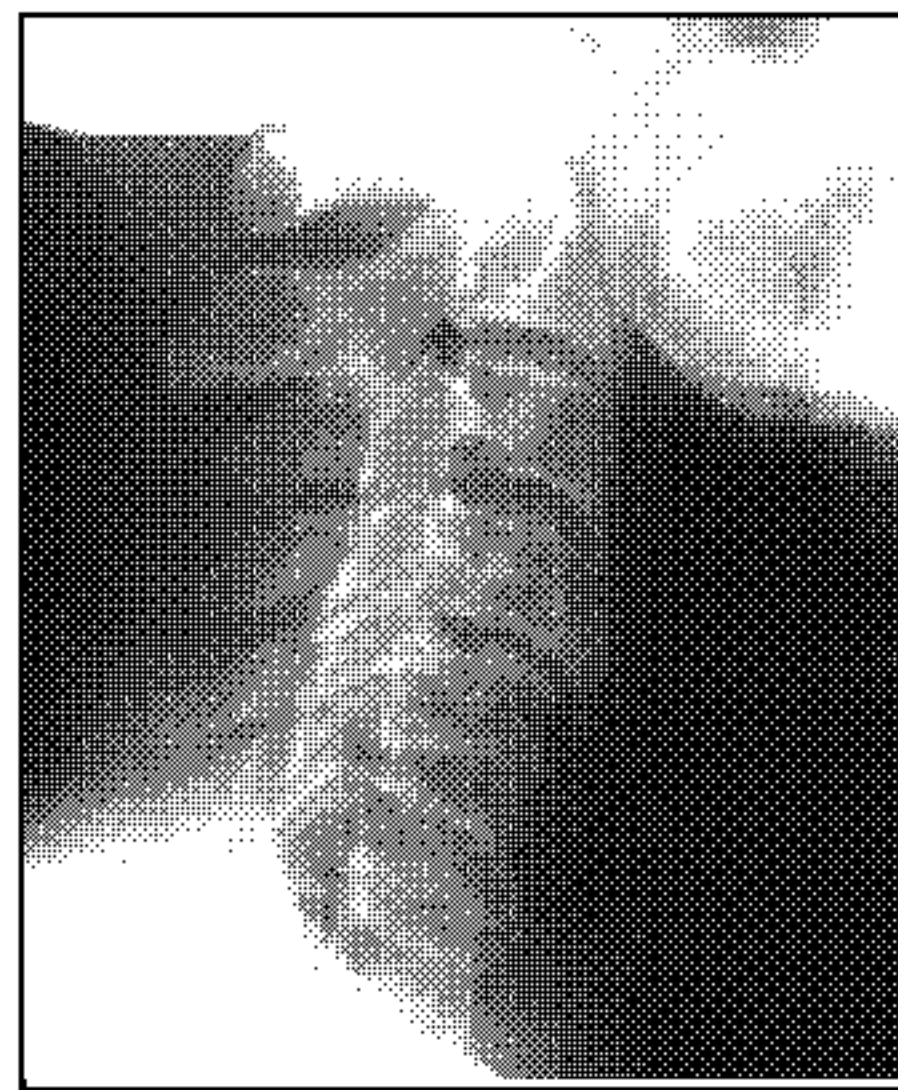
### Fibreoptic nasendoscopy

How often do you use this test?

never  occasionally  sometimes  regularly  always

How useful is this test?

useless  little  somewhat  very  extremely



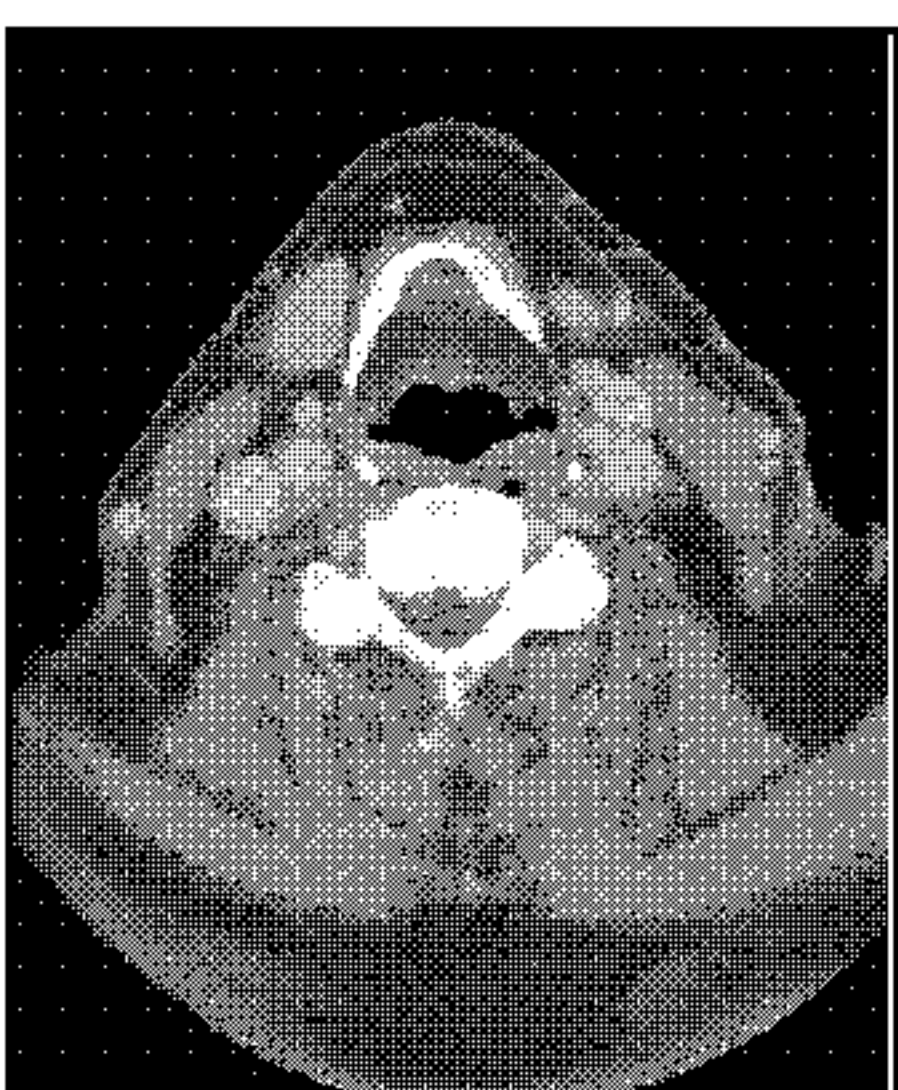
### Cervical spine X-ray

How often do you use this test?

never  occasionally  sometimes  regularly  always

How useful is this test?

useless  little  somewhat  very  extremely



### CT or MRI of head and neck

How often do you use this test?

never  occasionally  sometimes  regularly  always

How useful is this test?

useless  little  somewhat  very  extremely



**In patients requiring general anaesthesia:**

Q1 How often do you ask about previous general anaesthesia?      never      occasionally      sometimes      regularly      always  
                       

Q2 How often do you clinically assess the airway?      never      occasionally      sometimes      regularly      always  
                       

Q3 If not always, what prompts you to do it?      History of difficulty        
Physical appearance        
Others, please specify     

Specific Reasons:

Q4 How important is a history of difficult airway?      irrelevant      little      somewhat      very      extremely  
                       

**In patients requiring regional anaesthesia:**

Q5 How often do you assess the airway?      never      occasionally      sometimes      regularly      always  
                       

Q6 Why do you do it this often?      Risk of failure of regional        
Others, please specify     

Specific Reasons:

Q7 If it is for Caesarian section, how often do you assess the airway?      never      occasionally      sometimes      regularly      always  
                       

Q8 If there is a difference between your airway assessment for general regional and obstetric regional anaesthesia, why?

