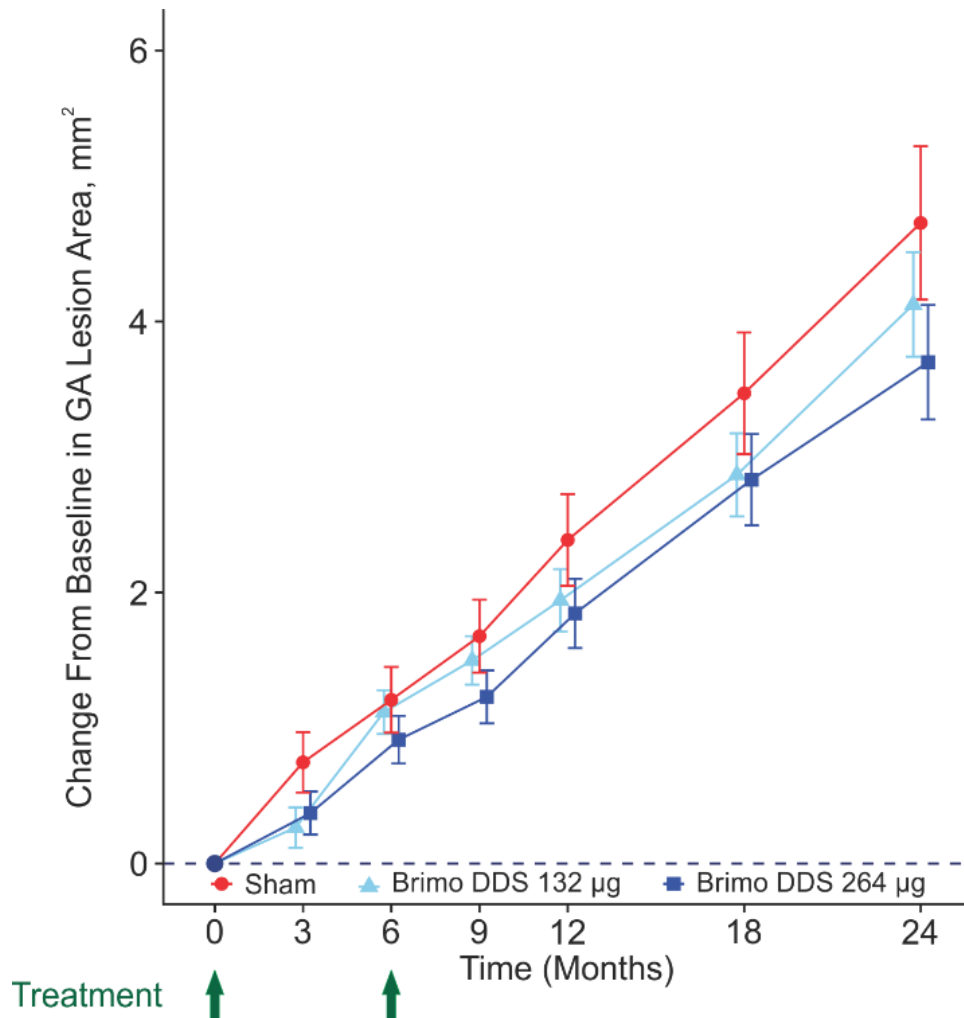


## Supplemental Digital Content 6



**Figure.** Change from baseline in geographic atrophy (GA) lesion area in the study eye in the modified intent-to-treat population. Data shown are least-square means  $\pm$  standard error from a mixed-effects repeated-measures model using observed values (with no imputation for missing values) and fixed effects of treatment, visit, the treatment-by-visit interaction, the baseline area-by-visit interaction, and baseline GA lesion area as a covariate. Arrows indicate timing of study treatments.  $P=0.077$  for Brimo DDS 132  $\mu\text{g}$  vs sham at month 3.