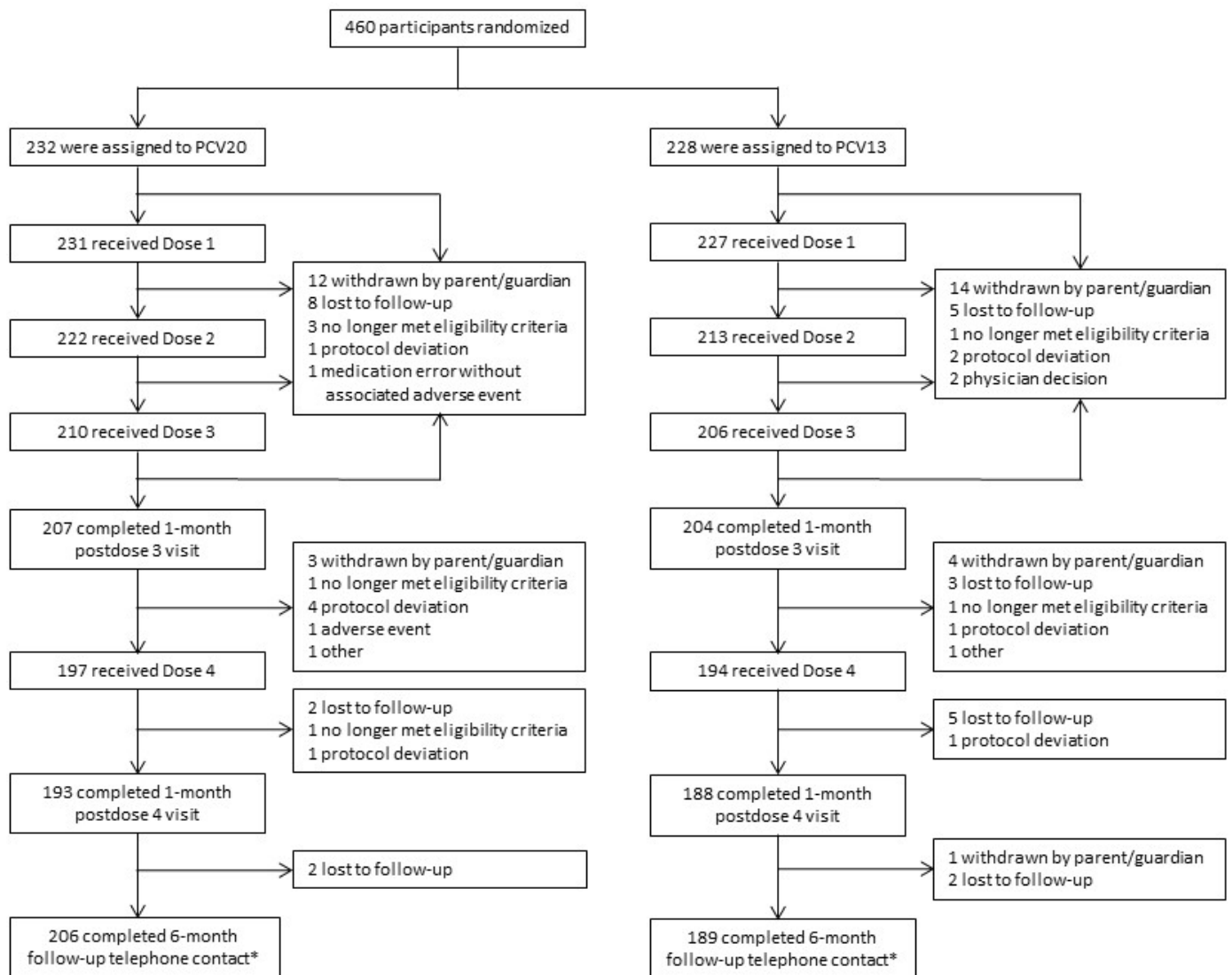


# Supplemental Digital Content

## Supplemental Digital Content 1. Participant Disposition



PCV13=13-valent pneumococcal conjugate vaccine; PCV20=20-valent pneumococcal conjugate vaccine.

\*Parents/legal guardians of subjects who received  $\geq 1$  study vaccination were asked to complete a 6-month follow-up telephone contact following the last dose received.

## Supplemental Digital Content 2. Summary of Serious Adverse Events; Safety Population

System Organ Class Preferred Term	PCV20 (N <sup>a</sup> =231)			PCV13 (N <sup>a</sup> =227)		
	n <sup>b</sup>	%	(95% CI) <sup>c</sup>	n <sup>b</sup>	%	(95% CI) <sup>c</sup>
Any event	12	5.2	(2.7, 8.9)	5	2.2	(0.7, 5.1)
Blood and Lymphatic System Disorders	1	0.4	(0.0, 2.4)	0	0	(0.0, 1.6)
Anaemia	1	0.4	(0.0, 2.4)	0	0	(0.0, 1.6)
Infections and Infestations	8	3.5	(1.5, 6.7)	4	1.8	(0.5, 4.5)
Bronchiolitis	1	0.4	(0.0, 2.4)	0	0	(0.0, 1.6)
Bronchitis viral	1	0.4	(0.0, 2.4)	0	0	(0.0, 1.6)
Croup infectious	1	0.4	(0.0, 2.4)	0	0	(0.0, 1.6)
Gastroenteritis	1	0.4	(0.0, 2.4)	1	0.4	(0.0, 2.4)
Meningitis viral	1	0.4	(0.0, 2.4)	0	0	(0.0, 1.6)
Parainfluenzae virus infection	0	0	(0.0, 1.6)	1	0.4	(0.0, 2.4)
Pneumonia	0	0	(0.0, 1.6)	1	0.4	(0.0, 2.4)
Respiratory syncytial virus bronchiolitis	1	0.4	(0.0, 2.4)	0	0	(0.0, 1.6)
Respiratory syncytial virus infection	0	0	(0.0, 1.6)	1	0.4	(0.0, 2.4)
Sepsis	1	0.4	(0.0, 2.4)	0	0	(0.0, 1.6)
Urinary tract infection	1	0.4	(0.0, 2.4)	0	0	(0.0, 1.6)
Viral upper respiratory tract infection	1	0.4	(0.0, 2.4)	0	0	(0.0, 1.6)
Metabolism and Nutrition Disorders	1	0.4	(0.0, 2.4)	0	0	(0.0, 1.6)
Failure to thrive	1	0.4	(0.0, 2.4)	0	0	(0.0, 1.6)
Malnutrition	1	0.4	(0.0, 2.4)	0	0	(0.0, 1.6)
Nervous System Disorders	0	0	(0.0, 1.6)	1	0.4	(0.0, 2.4)
Seizure like phenomena	0	0	(0.0, 1.6)	1	0.4	(0.0, 2.4)
Renal and Urinary Disorders	1	0.4	(0.0, 2.4)	0	0	(0.0, 1.6)
Oliguria	1	0.4	(0.0, 2.4)	0	0	(0.0, 1.6)
Respiratory, Thoracic and Mediastinal Disorders	1	0.4	(0.0, 2.4)	0	0	(0.0, 1.6)
Respiratory distress	1	0.4	(0.0, 2.4)	0	0	(0.0, 1.6)

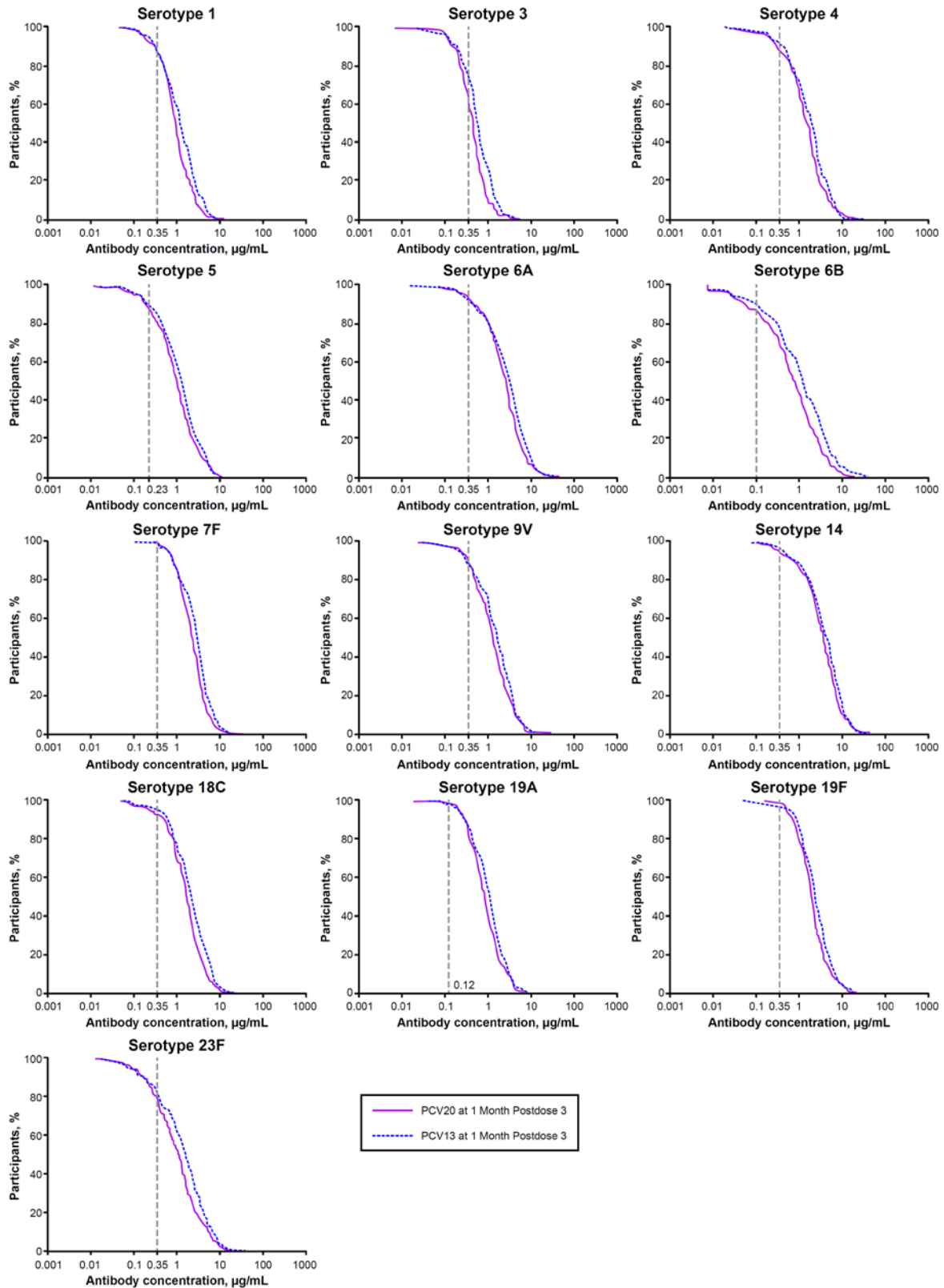
PCV13=13-valent pneumococcal conjugate vaccine; PCV20=20-valent pneumococcal conjugate vaccine.

<sup>a</sup>N=number of participants in the specified group, values used as the denominators for percentage calculations.

<sup>b</sup>n=number of participants reporting  $\geq 1$  occurrence of the specified event.

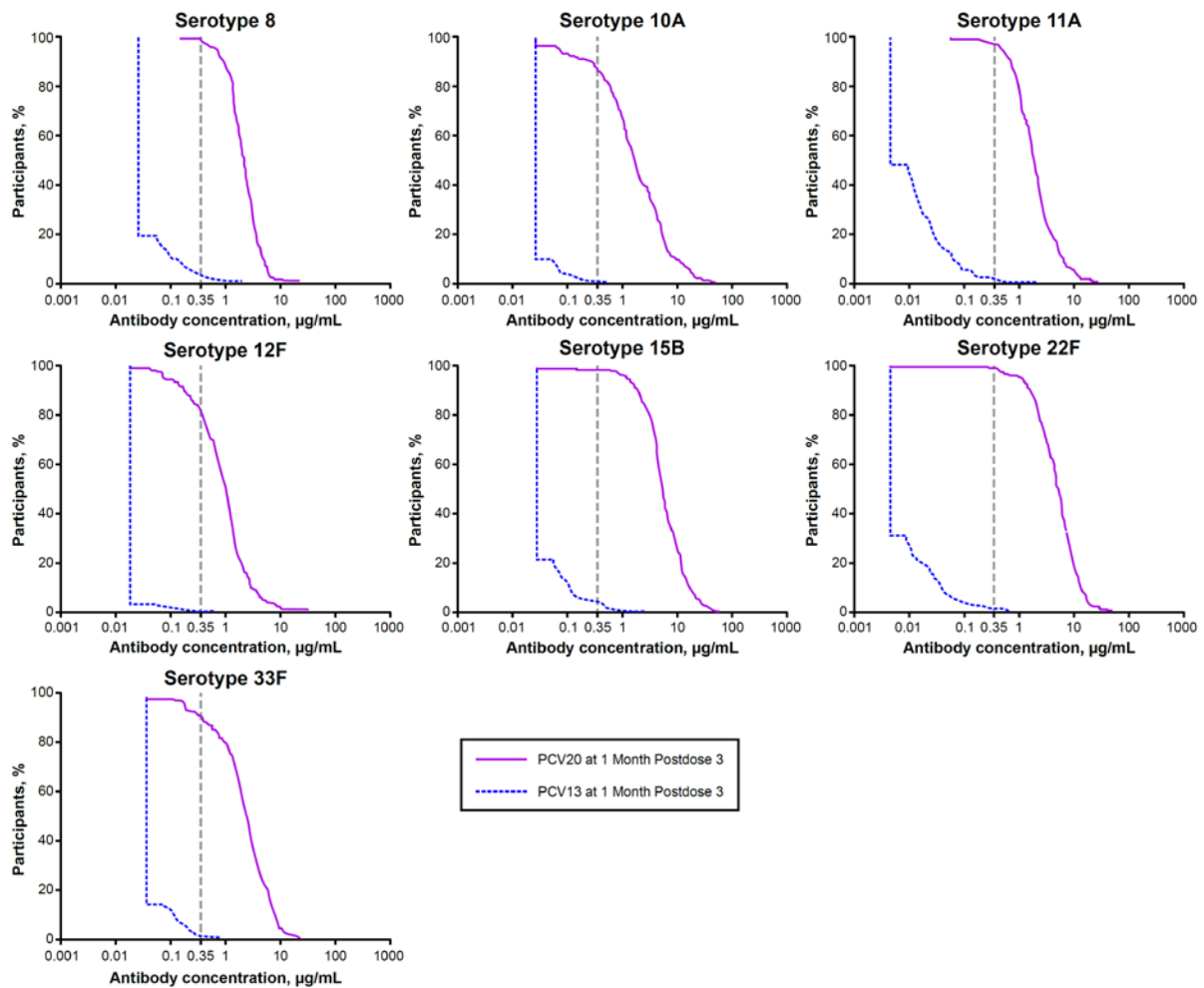
<sup>c</sup>Exact 95% CIs were calculated using the Clopper-Pearson method.

### Supplemental Digital Content 3. Reverse Cumulative Distribution Curves of IgG Concentrations for the 13 Matched Serotypes at 1 Month After Dose 3; Evaluable Immunogenicity Population



IgG=immunoglobulin G; PCV20=20-valent pneumococcal conjugate vaccine; PCV13=13-valent pneumococcal conjugate vaccine.

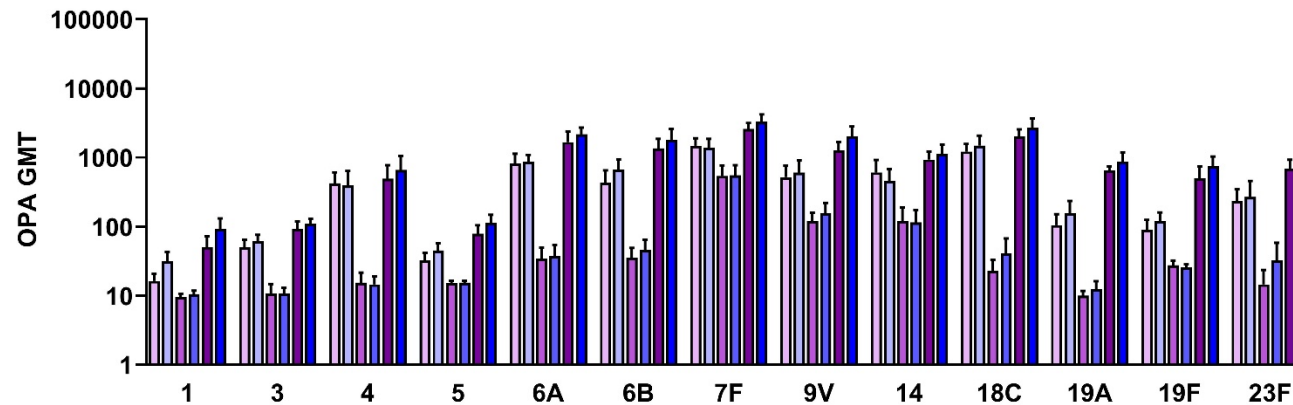
**Supplemental Digital Content 4. Reverse Cumulative Distribution Curves of IgG Concentrations for the 7 Additional Serotypes in PCV20 at 1 Month After Dose 3; Evaluable Immunogenicity Population**



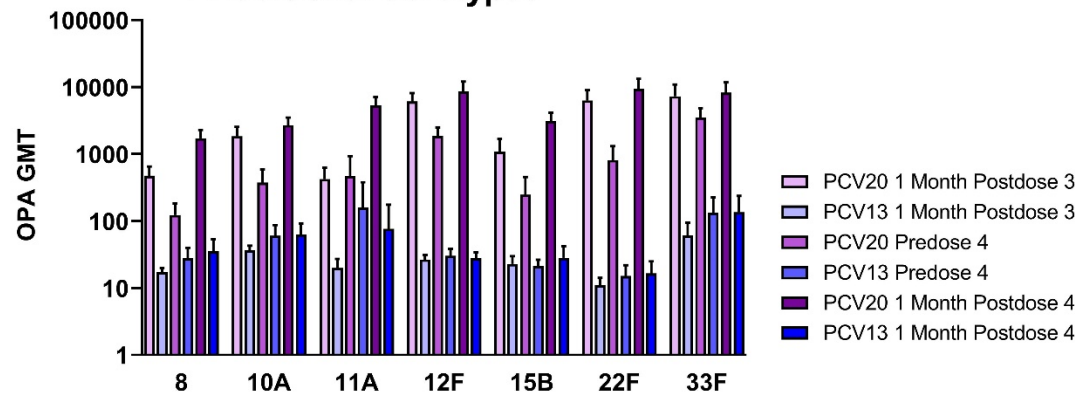
IgG=immunoglobulin G; PCV20=20-valent pneumococcal conjugate vaccine; PCV13=13-valent pneumococcal conjugate vaccine.

**Supplemental Digital Content 5. Pneumococcal OPA GMTs for the (A) 13 Matched and (B) 7 Additional Serotypes in PCV20 at 1 Month After Dose 3, Before Dose 4, and 1 Month After Dose 4; Evaluable Immunogenicity Population**

**A 13 Matched Serotypes**



**B 7 Additional Serotypes**



For 1 month postdose 3, PCV20, n=47–61; PCV13, n=52–59.

For predose 4, PCV20, n=40–59; PCV13, n=42–53. For 1 month postdose 4, PCV20, n=42–59; PCV13, n=37–51.

GMTs and 2-sided CIs were calculated based on the Student's *t* distribution.

Error bars are the upper bound of 2-sided 95% CI.

OPA titers below the LLOQ were set to  $0.5 \times \text{LLOQ}$  in the analysis.

GMT=geometric mean titer; LLOQ=lower limit of quantitation; OPA=opsonophagocytic activity; PCV13=13-valent pneumococcal conjugate vaccine; PCV20=20-valent pneumococcal conjugate vaccine.