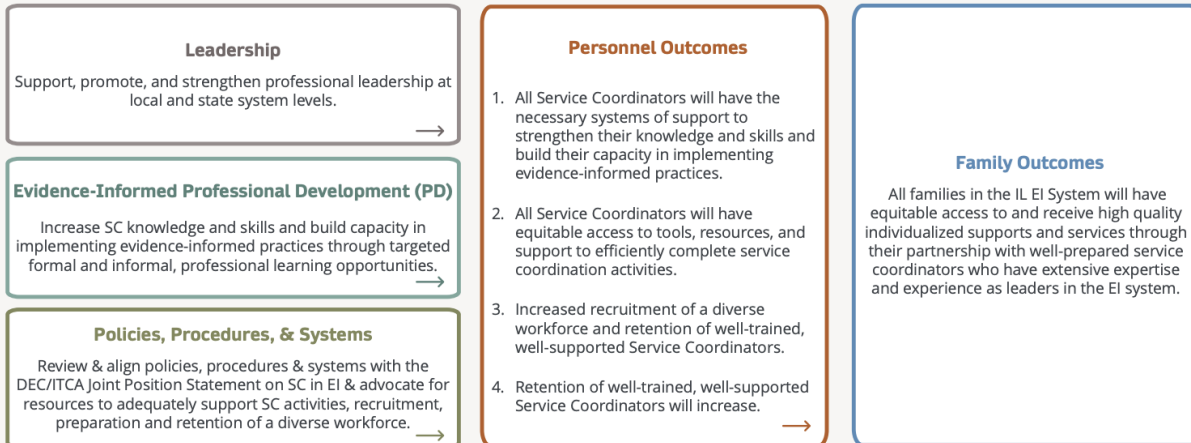


Appendix C

Theory of Action - Service Coordination (SC)

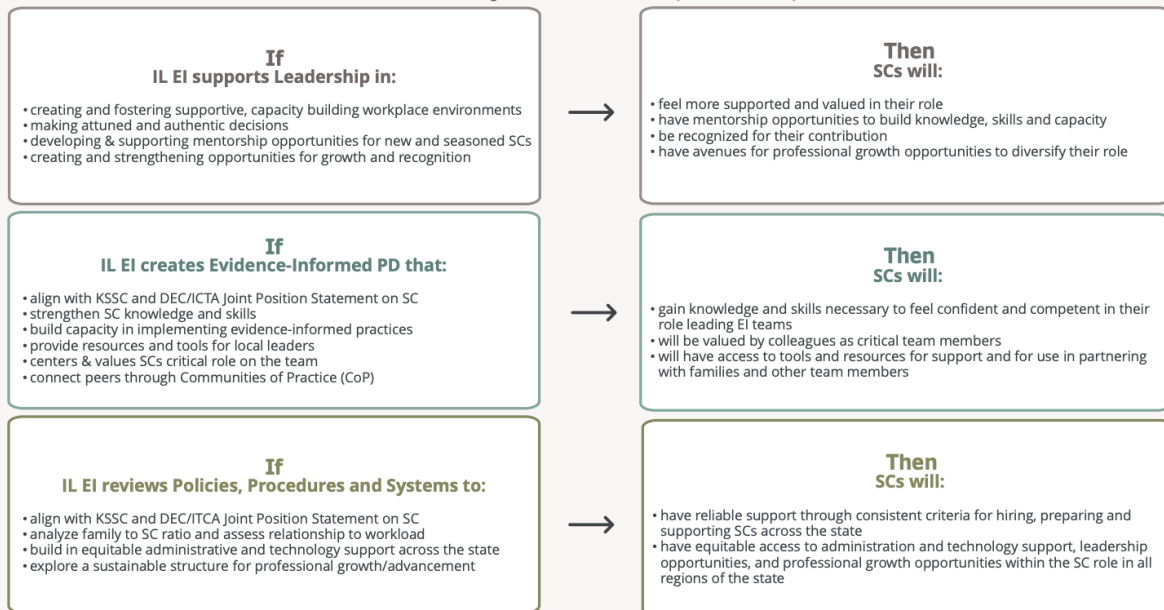
Illinois Service Coordination Initiatives

The Illinois Early Intervention (IL EI) System supports Service Coordination (SC) personnel in gaining and strengthening the knowledge, skills and expertise necessary in order to provide the highest quality supports and services, informed by the best available evidence, for eligible children and their families. Service Coordinators (SC) are recognized and valued as leaders with expertise on EI systems, family-centered practices, and community resources, and with skills in fostering family-professional, team and community partnerships and in facilitating and documenting the EI process. This theory of action is intended to guide the collective work of Illinois' EI System in strengthening supports for service coordination.



EITP Developed by the Early Intervention Training Program at the University of Illinois © Sept. 2021, revised Dec. 2021

Theory of Action - SC (continued)



EITP Developed by the Early Intervention Training Program at the University of Illinois © Sept. 2021, revised Dec. 2021

Theory of Action - SC (continued)

Resources and References

- [**Division for Early Childhood \(DEC\) Recommended Practices**](#) (DEC, 2014)
- [**Evidence-Informed Professional Development - At a Glance**](#) (Early Intervention-Early Childhood Professional Development Community of Practice (CoP), 2017)
- [**Illinois Service Coordination Stakeholder Executive Summary**](#) (EITP, March 2020)
- [**Improving the Design and Implementation of In-Service Professional Development in Early Childhood Intervention**](#) (Dunst, 2015)
- [**Introduction to Communities of Practice**](#) (Wenger-Trayner, 2015)
- [**Knowledge and Skills for Service Coordinators \(KSSC\)**](#) (DEC SC CoP, 2020)
- [**Service Coordination in Early Intervention DEC and IDEA Infant & Toddler Coordinators Association \(ITCA\) Joint Position Statement**](#) (DEC & ITCA, Dec. 2020)

