

Fig. E-1
 Cumulative revision rate of primary conventional total hip arthroplasties according to the reason for revision.

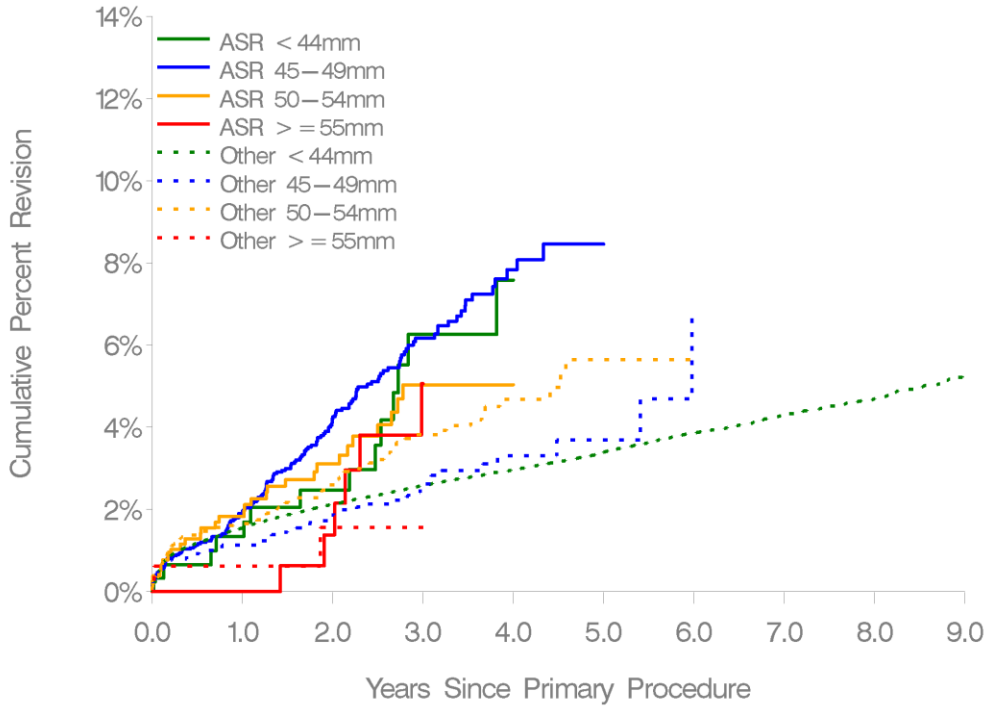


Fig. E-2
 Cumulative revision rate of primary conventional total hip arthroplasties according to femoral component head size.

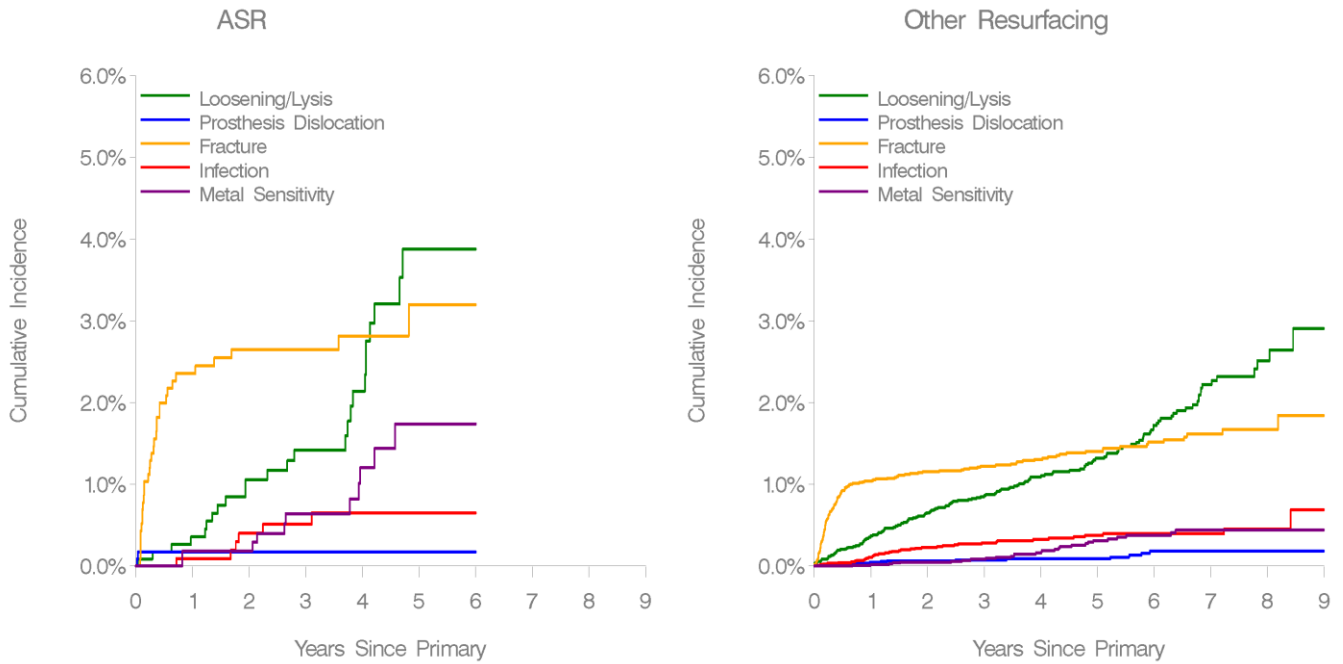


Fig. E-3
 Cumulative revision rate of primary hip resurfacings according to the reason for revision.

TABLE E-1 Type of Revision of Primary Conventional Total Hip Arthroplasties

Type of Revision	ASR XL Acetabular System		Other Conventional Acetabular Component	
	No. of Revisions	%	No. of Revisions	%
Major	187	89	3489	72
Femoral component only	39	19	1449	30
Acetabular component only	93	44	1172	24
Total hip replacement (femoral and acetabular components)	38	18	589	12
Cement spacer	15	7	230	5
Removal of all components	2	1.0	39	1
Reinsertion of components			6	0.1
Bipolar head and femoral component			2	0.0
Saddle			2	0.0
Minor	23	11	1378	28
Head and insert	1	0.5	926	19
Head only	18	9	268	6
Minor components	4	2	78	2
Insert only			71	1
Head and neck			32	1
Neck only			2	0.0
Neck and insert			1	0.0
Total	210	100	4867	100

TABLE E-2 Revision Rate of Primary Conventional Total Hip Arthroplasties Involving the ASR XL Acetabular System According to the Femoral Component

Femoral Component*	Total No.	No. of Revisions	Observed Years	Revisions/100 Observed Years (95% Confidence Interval)
Corail	2892	142	6517	2.2 (1.8 to 2.6)
Summit	1129	46	3248	1.4 (1.0 to 1.9)
S-ROM	259	17	779	2.2 (1.3 to 3.5)
C-Stem	81	4	168	2.4 (0.7 to 6.1)
Silent	19	0	58	0.0 (0.0 to 6.4)
Other (8 models)	26	1	61	1.6 (0.0 to 9.2)
Total	4406	210	10830	1.9 (1.7 to 2.2)

*Only prostheses used in >10 procedures are listed separately.

TABLE E-3 Reason for Revision of Primary Hip Resurfacings

Reason for Revision	ASR Hip Resurfacing System		Other Resurfacing Component	
	No. of Revisions	%	No. of Revisions	%
Fracture	32	37	163	35
Loosening and/or osteolysis	25	29	158	34
Metal sensitivity	11	13	28	6
Infection	6	7	39	8
Other	12	14	74	16
Total	86	100	462	100

TABLE E-4 Type of Revision of Primary Hip Resurfacings

Type of Revision	ASR Hip Resurfacing System		Other Resurfacing Component	
	No. of Revisions	%	No. of Revisions	%
Femoral component only	42	49	245	53
Total hip replacement (femoral and acetabular components)	39	45	162	35
Acetabular component only	4	5	37	8
Cement spacer	1	1	14	3
Removal of all components	0	0	4	1
Total	86	100	462	100

TABLE E-5 Revision Rate of Primary Total Hip Arthroplasties Involving the ASR Hip Resurfacing System Compared with All Other Resurfacing Prostheses According to Femoral Component Head Size

Head Size (mm)	Time Interval	Hazard Ratio, ASR Compared with Other	95% Confidence Interval	P Value
≤44	0-5 yr	2.6	1.5 to 4.4	<0.01
45-49	0-5 yr	1.8	1.2 to 2.6	<0.01
50-54	0-5 yr	3.1	2.1 to 4.8	<0.01
≥55	0-5 yr	3.4	1.2 to 9.1	0.02