

Fig. E-1  
Light microscopy image of the interfacial surface of the distal aspect of the modular neck. Pitting and scarring of the surface (arrows) are evident at low magnification.

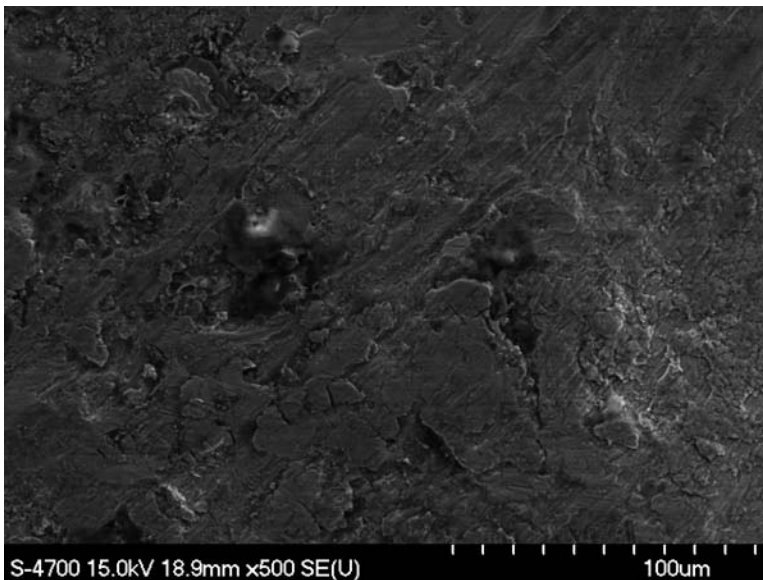


Fig. E-2  
Scanning electron microscopy image of the interfacial surface of the distal aspect of the modular neck. Microscopic pitting and scarring are apparent at high magnification.

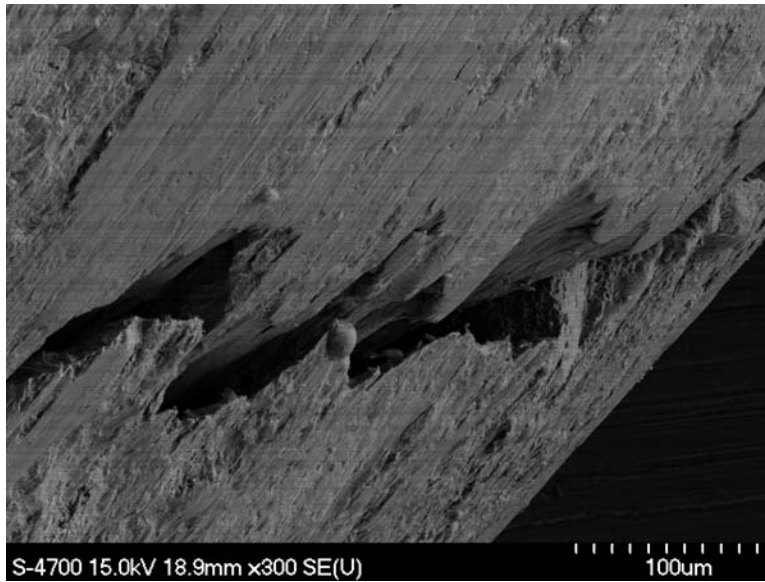


Fig. E-3  
Scanning electron microscopy image showing a crack near the fracture site in the modular neck.