

**Appendix**

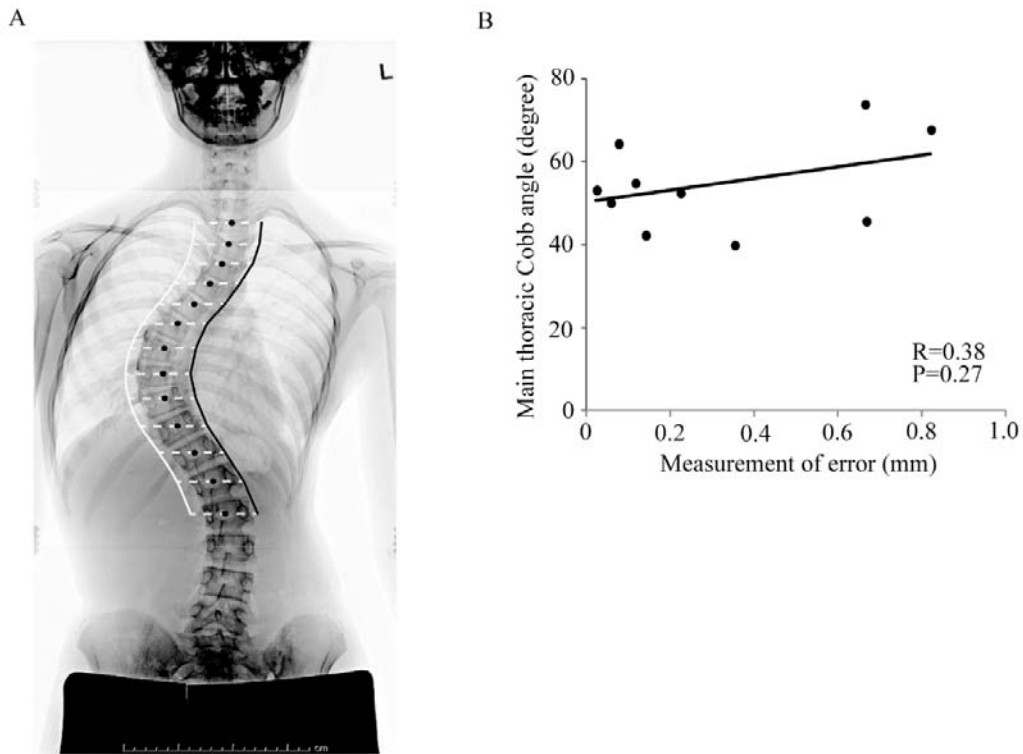


Fig. E-1

**Figs. E-1A and E-1B** Measurement of the error between straight and curved lines. **Fig. E-1A** A representative radiograph showing the measurement of 2 different lines. White line = curved-line measurement, black line = straight-line measurement, and black dots = anchor points. **Fig. E-1B** Correlation between the Cobb angle and the error between the curved and straight-line measurements (n = 10).