



CONSORT 2010 Flow Diagram

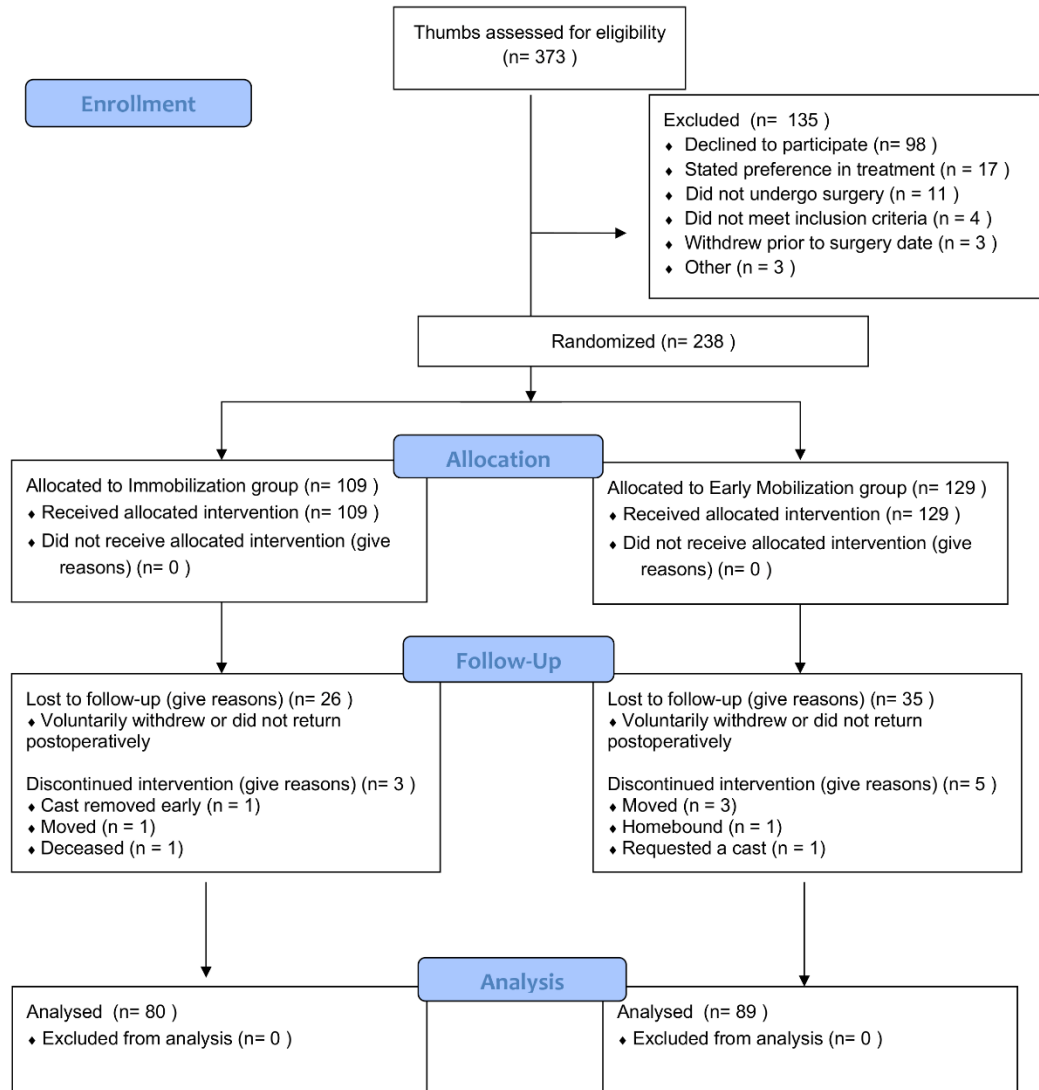


Fig. E-1
CONSORT flow diagram.

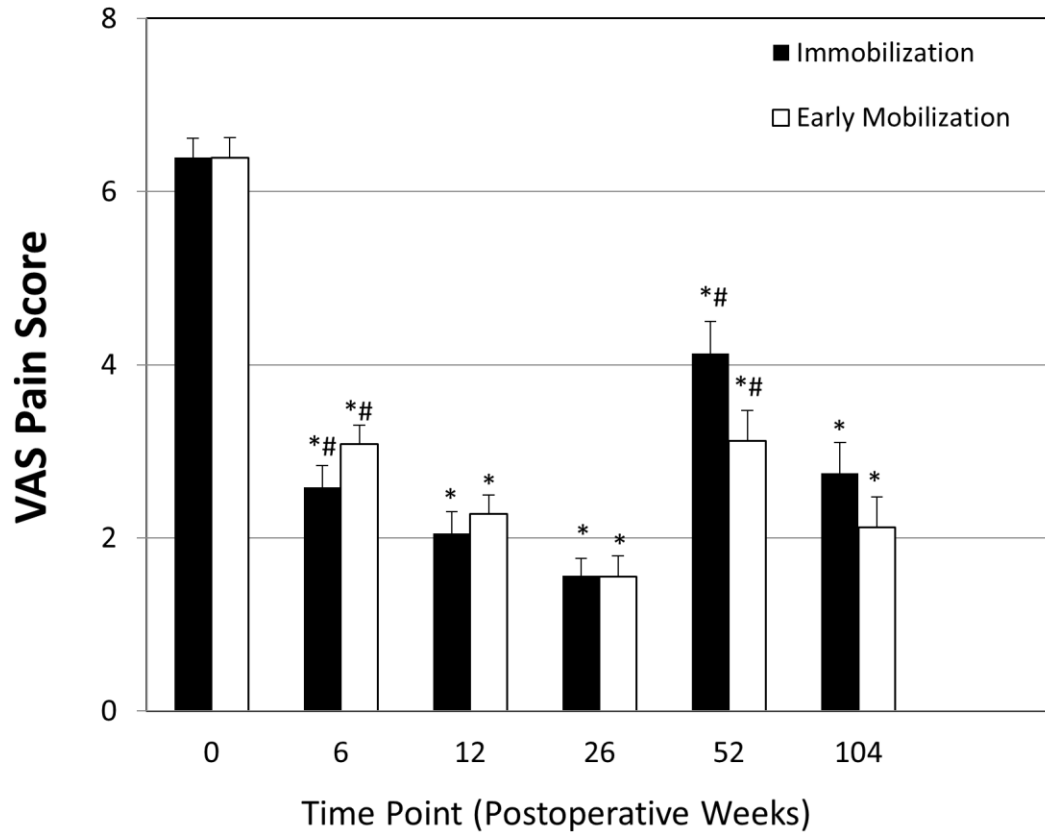


Fig. E-2

Graph showing data for VAS pain score. Data are shown as the mean and the standard error of the mean. * = $p < 0.05$ when compared with the respective preoperative value, and # = $p < 0.05$ when compared with the prior time point, as determined with use of Tukey multiple comparisons.

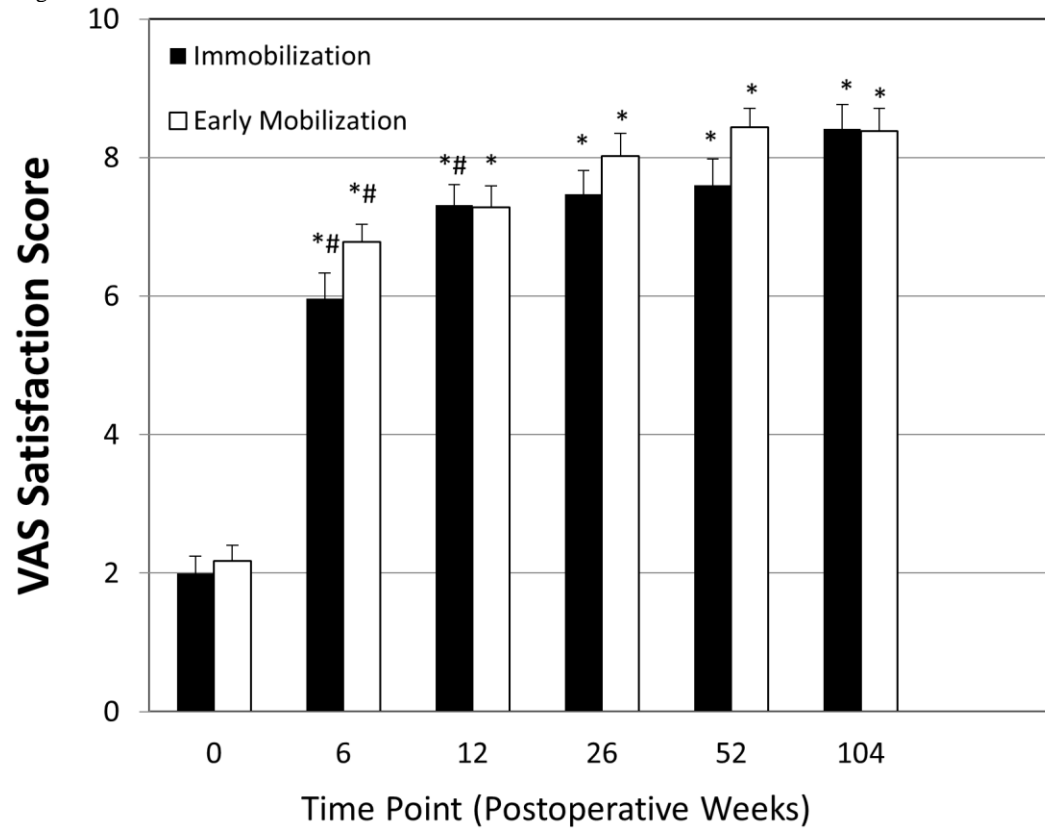


Fig. E-3

Graph showing data for VAS satisfaction score. Data are shown as the mean and standard error of the mean. * = $p < 0.05$ when compared with the respective preoperative value, and # = $p < 0.05$ when compared with the prior time point, as determined with use of Tukey multiple comparisons.

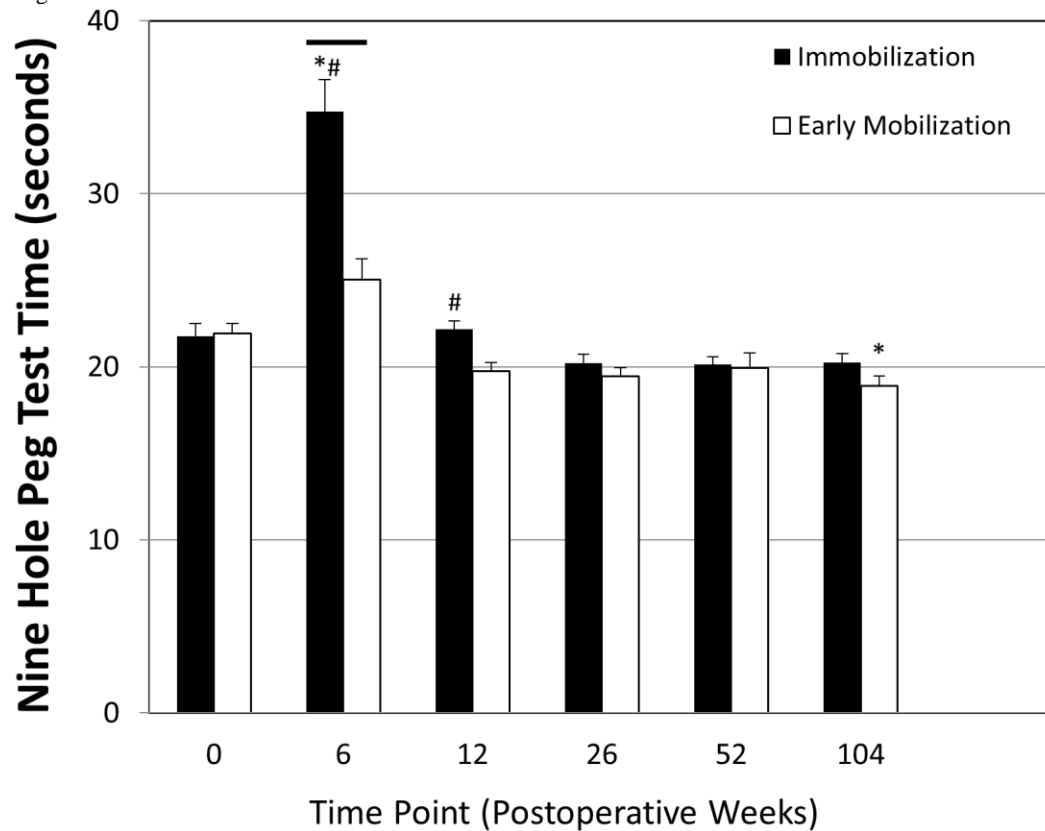


Fig. E-4

Graph showing data for the 9-hole peg test (NHP). Data are shown as the mean and standard error of the mean. Bar = $p < 0.05$ for the difference between groups at the given time point, * = $p < 0.05$ when compared with the respective preoperative value, and # = $p < 0.05$ when compared with the prior time point, as determined with use of Tukey multiple comparisons.

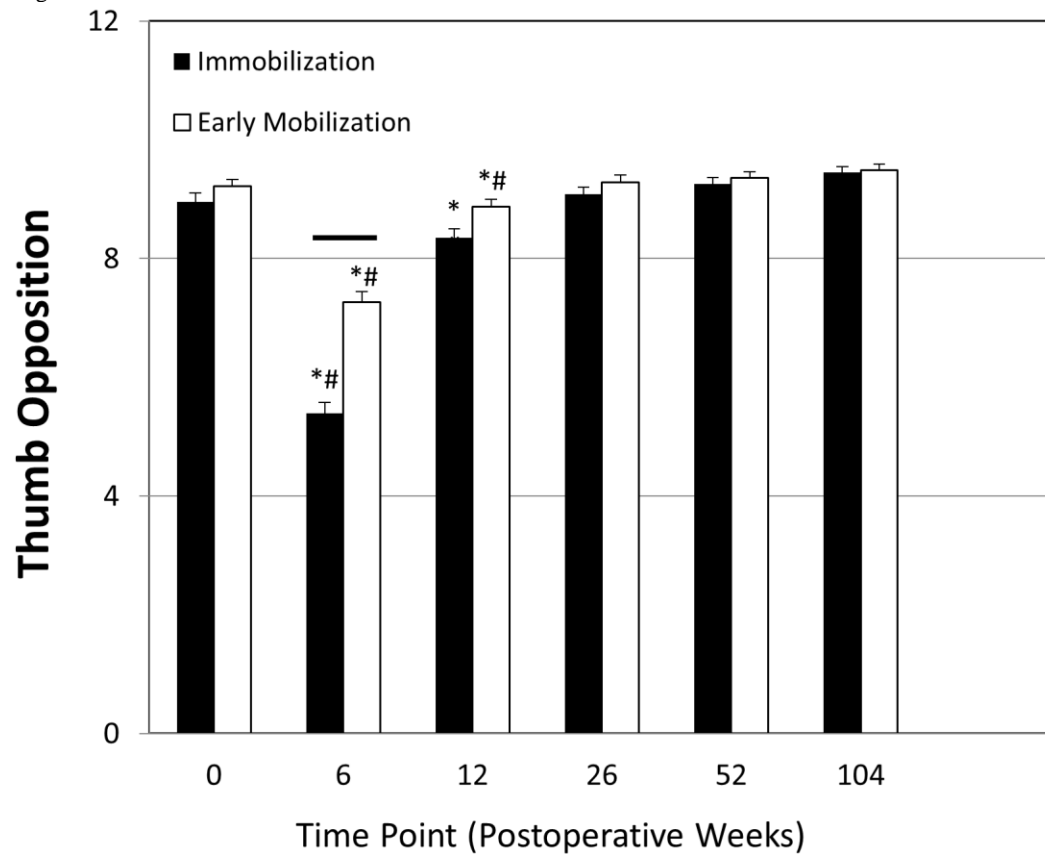


Fig. E-5

Graph showing data for thumb opposition. Data are shown as the mean and standard error of the mean. Bar = $p < 0.05$ for the difference between groups at the given time point, * = $p < 0.05$ when compared with the respective preoperative value, and # = $p < 0.05$ when compared with the prior time point, as determined with use of Tukey multiple comparisons.

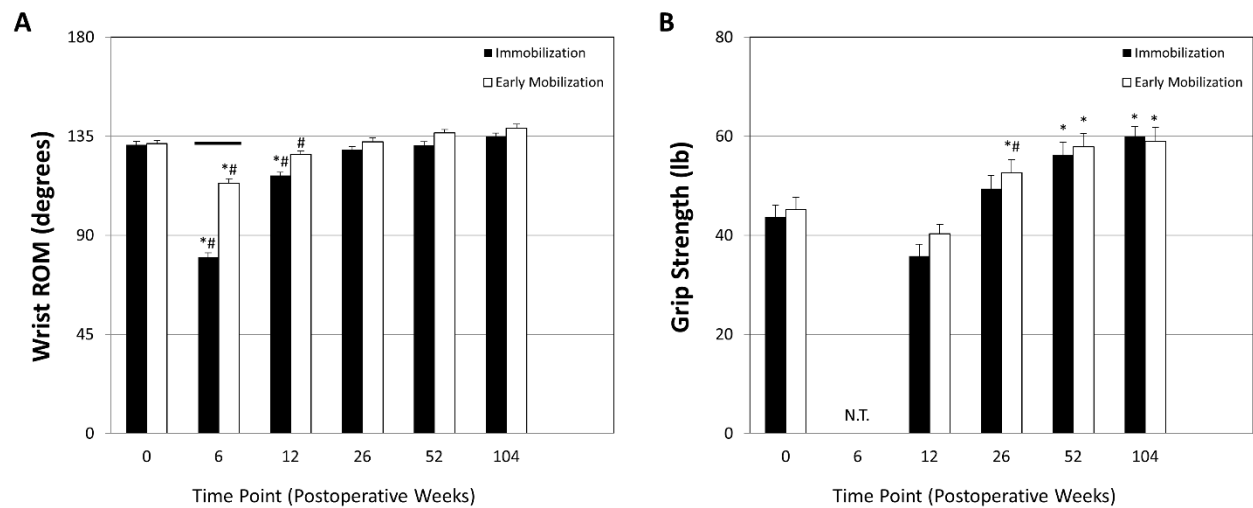


Fig. E-6

Graph showing data for wrist ROM (**Fig. E-6A**) and grip strength (**Fig. E-6B**). Data are shown as the mean and standard error of the mean. Bar = $p < 0.05$ for the difference between groups at the given time point, * = $p < 0.05$ when compared with the respective preoperative value, and # = $p < 0.05$ when compared with the prior time point, as determined with Tukey multiple comparisons.