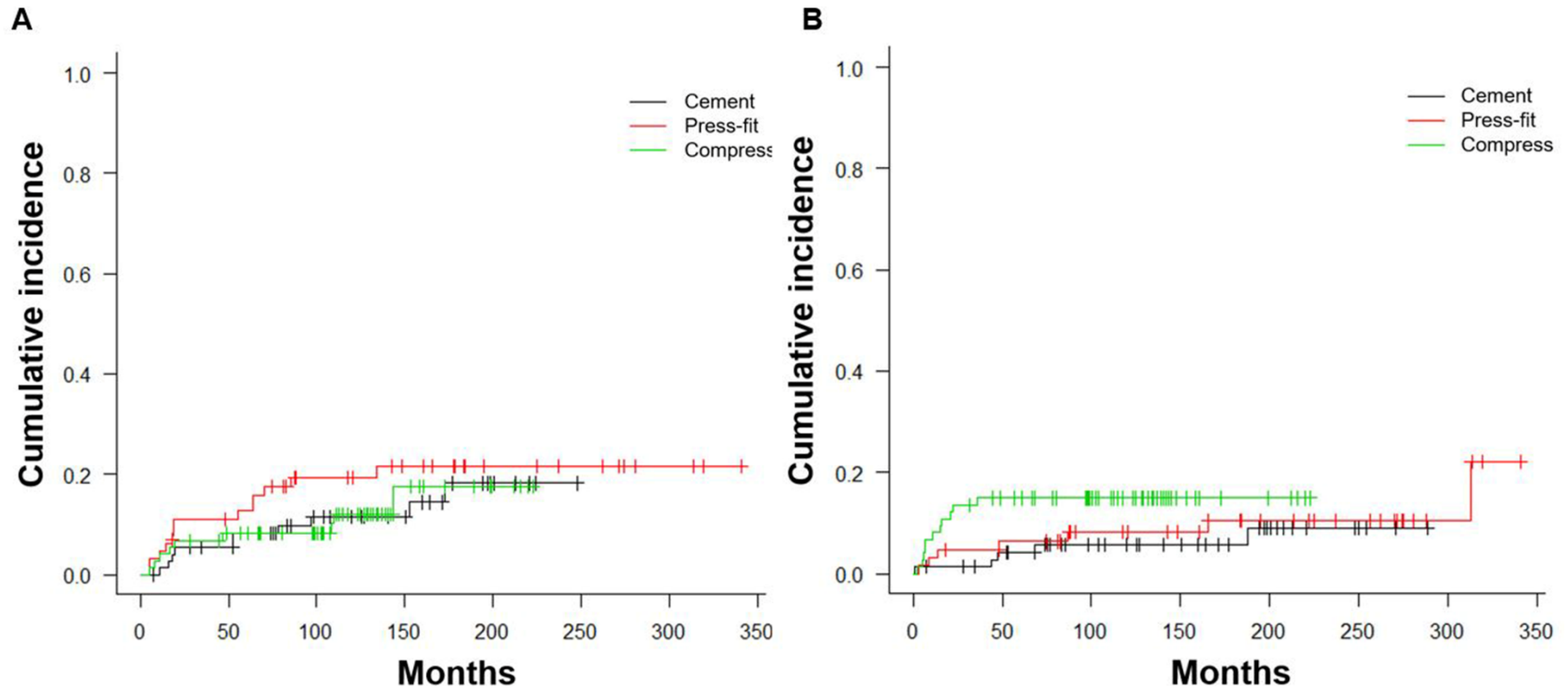
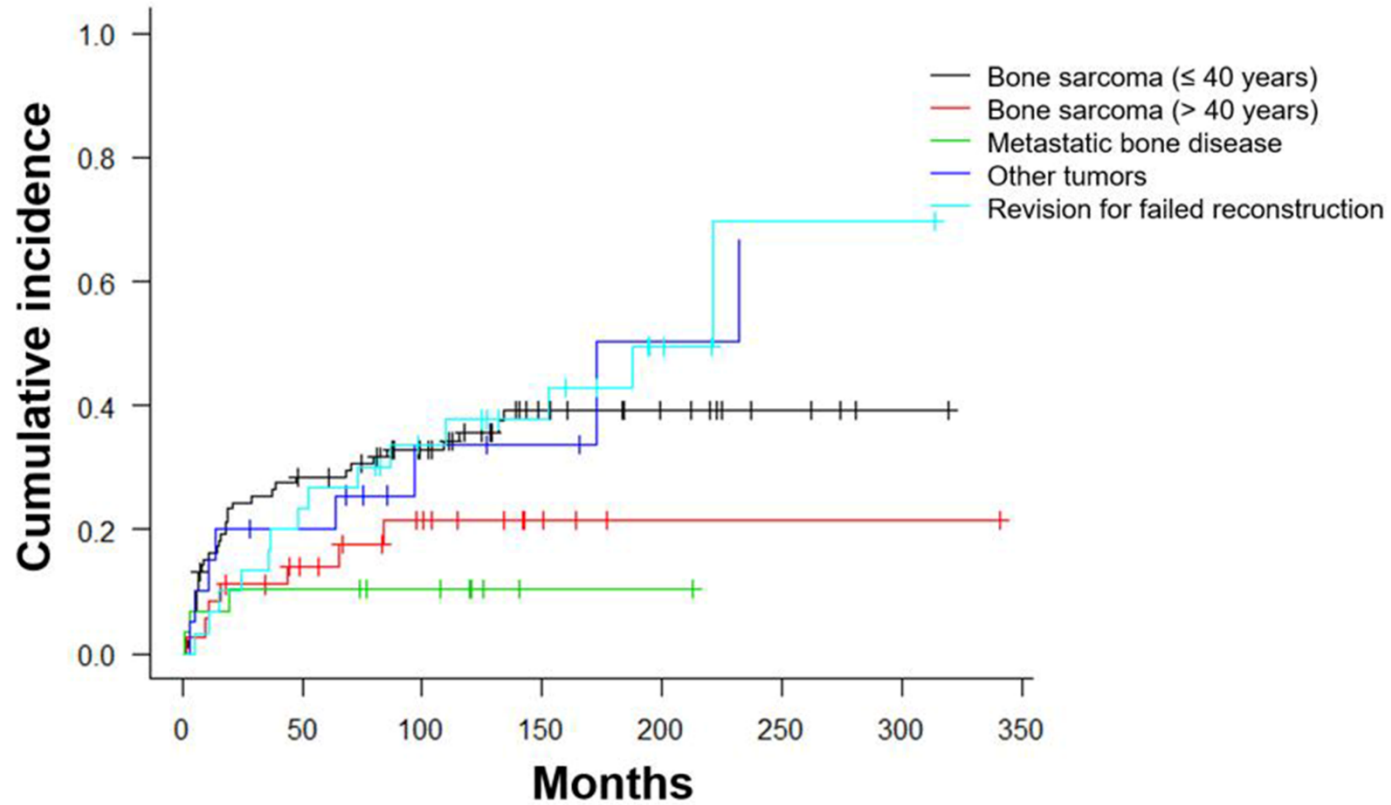


The following content was supplied by the authors as supporting material and has not been copy-edited or verified by JBJS.



Supplementary Figure 1. Cumulative incidence of implant removal/revision due to aseptic loosening (type 2) (A) and structural failure (type 3) (B) stratified by fixation of femoral component.



Supplementary Figure 2. Cumulative incidence of overall implant removal/revision stratified by 5 subgroup defined based on diagnosis and age.

Supplementary Table 1. Henderson classification of prosthetic failure.

Type of failure	Mode of failure	Description
Mechanical failure		
Type 1	Soft-tissue failure	Instability, tendon rupture, or aseptic wound dehiscence
Type 2	Aseptic loosening	Clinical and radiographic evidence of loosening
Type 3	Structural failure	Periprosthetic or prosthetic fracture or deficient of osseous supporting structure
Nonmechanical failure		
Type 4	Infection	Infection about endoprosthesis necessitating removal of device
Type 5	Tumor progression	Recurrence or progression of tumor with contamination of endoprosthesis