

COPYRIGHT © BY THE JOURNAL OF BONE AND JOINT SURGERY, INCORPORATED  
KRIECHLING ET AL.

A STATISTICAL SHAPE MODEL-BASED ANALYSIS OF PERIACETABULAR OSTEOTOMIES. TECHNICAL CONSIDERATIONS TO ACHIEVE  
THE TARGETED CORRECTION

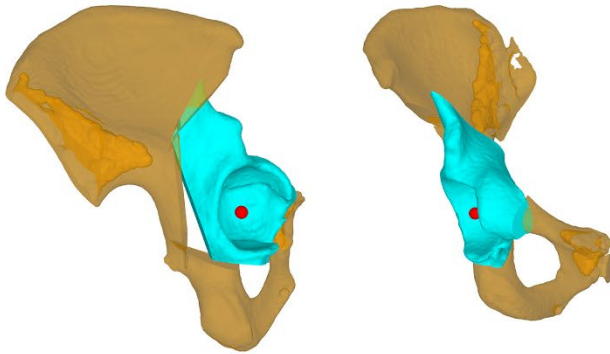
<http://dx.doi.org/10.2106/JBJS.21.00454>

Page 1

**The following content was supplied by the authors as supporting material and has not been copy-edited or verified by JBJS.**

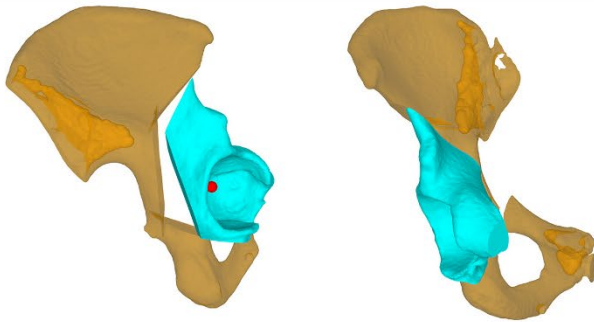
## **Without Translation**

---



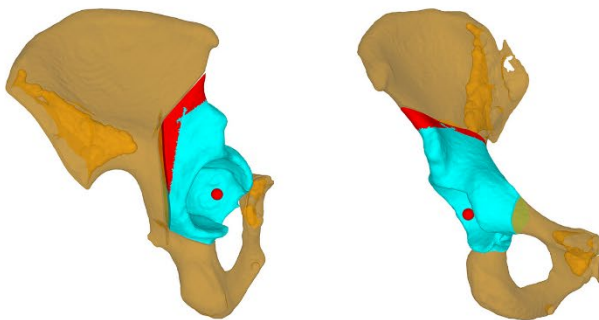
## **Translation without Resection**

---



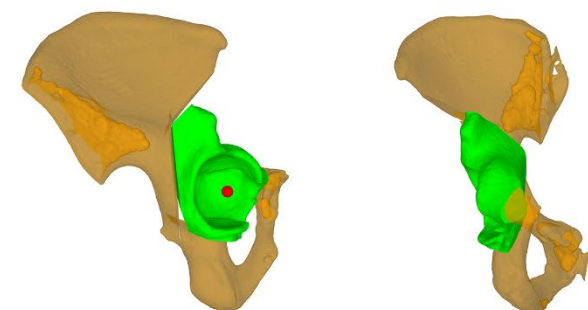
## **Necessary Resection**

---



## **Resected Fragment**

---



### **Supplemental Material**

Figure 1: Illustrates the clinical relevance and the necessary offcut in a patient planned for reverse PAO in a case of protrusio acetabuli. The blue-colored part illustrates the osteotomized fragment, and the red-colored part of the acetabular fragment has to be resected to achieve proper placement. In green, the fitting of the shaped fragment can be seen. The red point visualizes the original center of rotation.