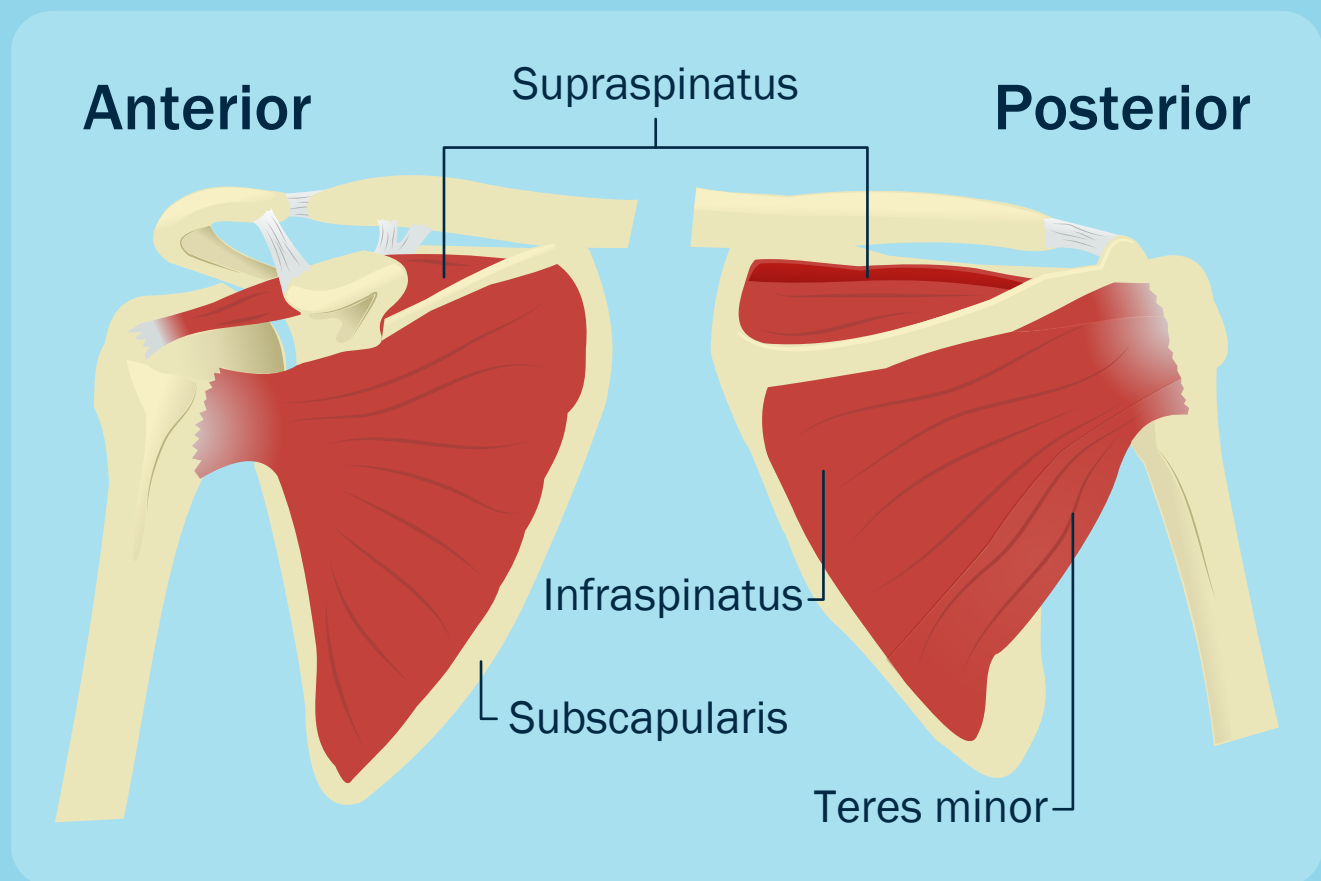
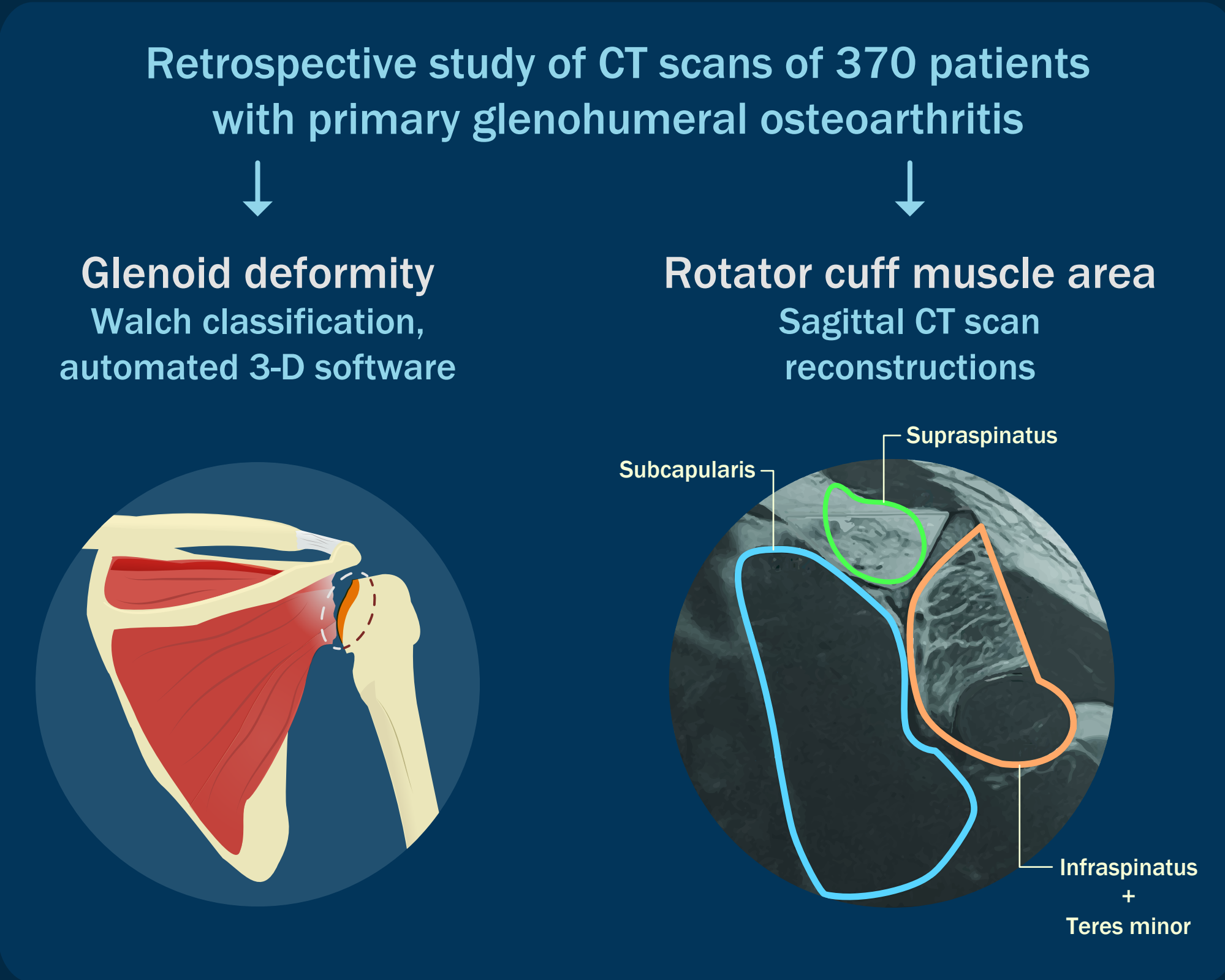


Association Between Rotator Cuff Muscle Size and Glenoid Deformity in Primary Glenohumeral Osteoarthritis

Rotator cuff muscle degeneration is commonly associated with primary glenohumeral osteoarthritis...



...but the association between glenoid deformity in primary glenohumeral osteoarthritis and rotator cuff muscle area is unclear



Analysis of associations between these factors revealed that Type B2 glenoids are associated with...

-
- Glenoid retroversion
 - Humeral-head subluxation
 - Supraspinatus area
 - Ratio of posterior rotator cuff area to subscapularis area

Key: Posterior glenoid wear and subluxation in osteoarthritis are associated with increased posterior rotator cuff muscle area compared with anterior rotator cuff muscle area

Association Between Rotator Cuff Muscle Size and Glenoid Deformity in Primary Glenohumeral Osteoarthritis

Aleem et al. (2019) DOI: 10.2106/JBJS.19.00086

www.jbjs.org | theJBJS | @JBJS

