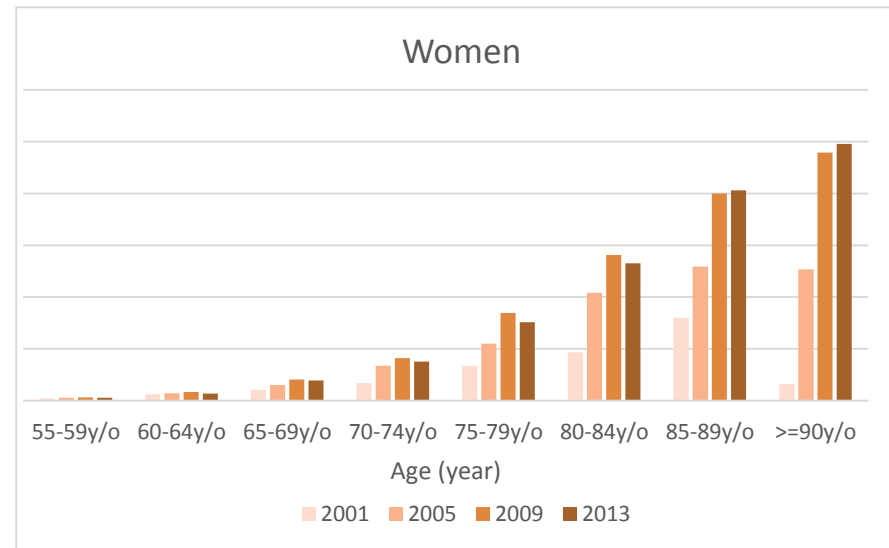
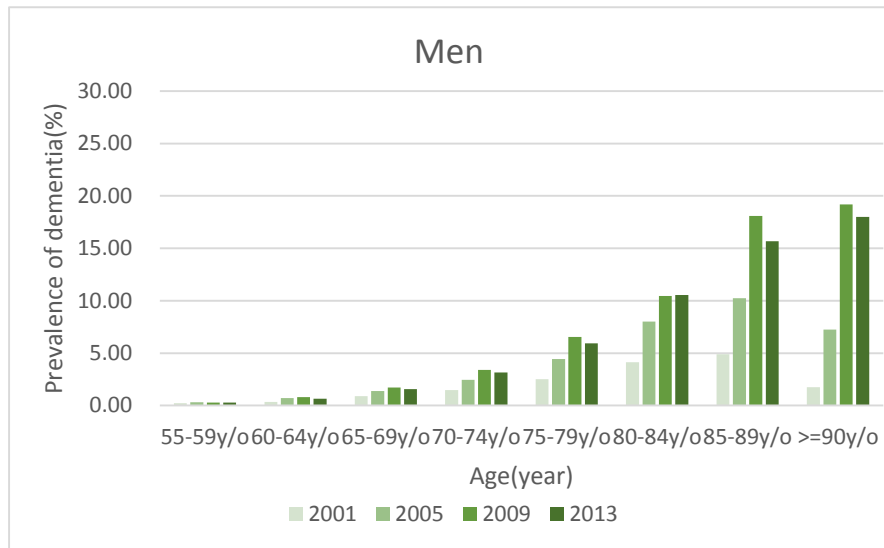
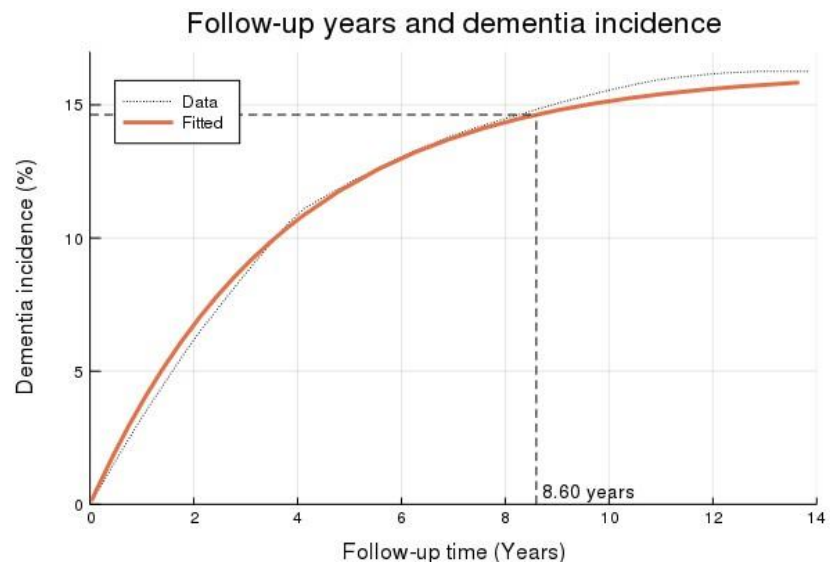


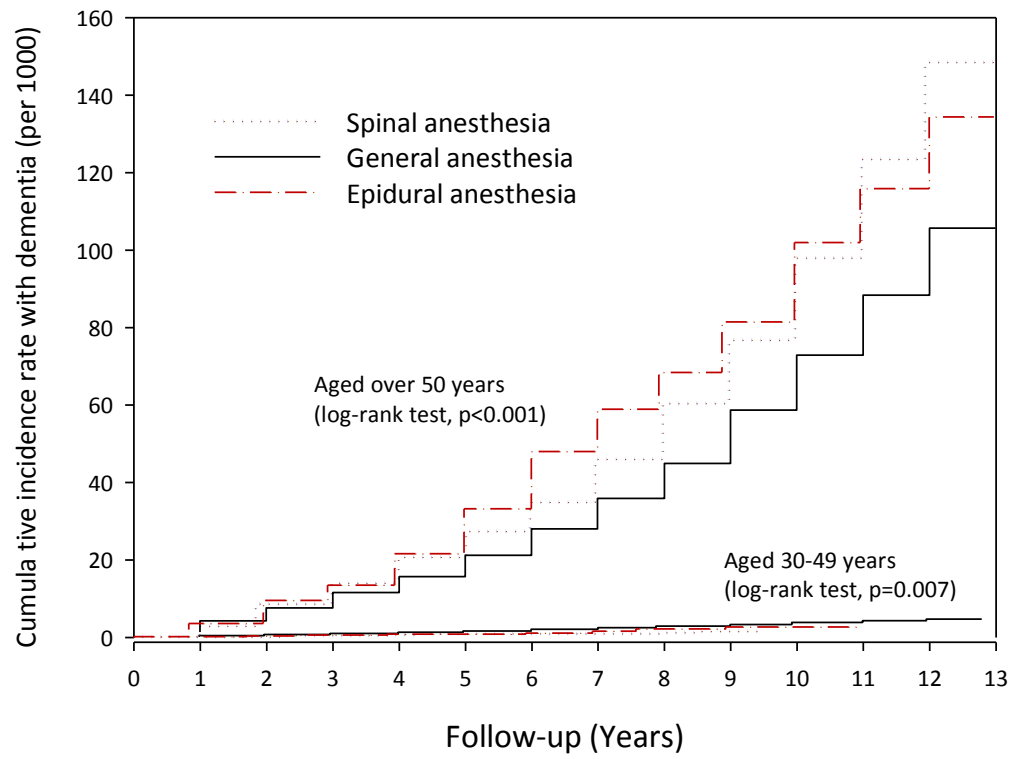
Figure 1. Relationship between the incidence of dementia and age at total hysterectomy



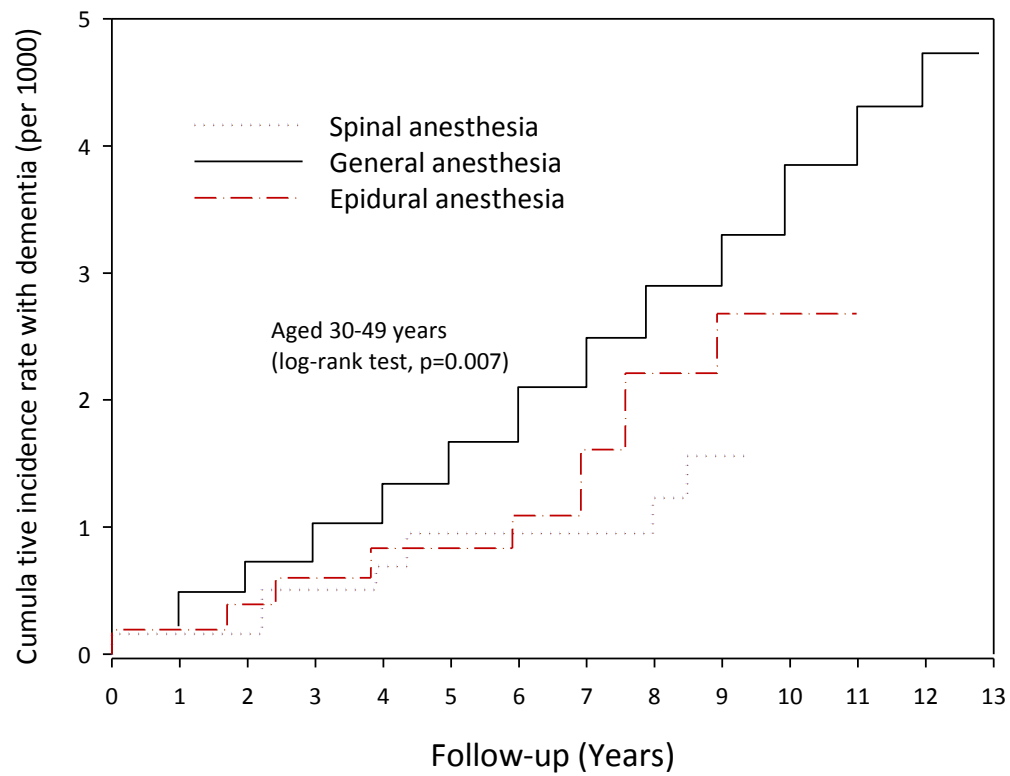
supplemental figure 1. Time trends in prevalence of dementia according to age group and sex in Taiwan



supplemental figure 2. The cumulative incidence for post-hysterectomy dementia increases to 95% of the maximum value at 8.6 years after surgery



supplemental figure 3. Cumulative incidence rate of dementia after anesthesia in total hysterectomy patients.



supplemental figure 4. Cumulative incidence rate of dementia after anesthesia in total hysterectomy patients (aged 30-49 years)