

**Supplementary Table. Disease diagnostic coding and prescription drug ATC code**

<b>Diseases/Drugs</b>	<b>ICD-9-CM/ATC</b>
Ischemic stroke	433–434, 436
Myocardial infraction	410-414
Major bleeding (codes recommended by Arnason et al. <i>Thrombosis Research</i> . 2006; 118: 253-262)	599.7(hematuria), 623.8 and 626.2 (vaginal bleeding), 784.7 (epistaxis), 786.3 (hemoptysis), 459 (hemorrhage, nonspecific), 719.1 and 719.2 (hemoarthrosis), 423 (hemopericardium), 455-578 (gastrointestinal bleeding)
Hemorrhagic stroke	430-432
Atrial fibrillation	427.3
Acute myocardial infarction	410
Hypertension	401–402
Diabetes	250
Dyslipidemia	272
Clopidogrel	B01AC04
Aspirin	B01AC06
Other antiplatelets	B01AC05, B01AC23, B01AC24
Oral anticoagulants	B01AA, B01AE, B01AF
Proton pump inhibitors	A02BC

ATC, Anatomical Therapeutic Chemical. ICD-9-CM, International Classification of Diseases, Ninth Revision, Clinical Modification

**Supplementary Figures. Kaplan-Meier curves of all outcomes**

Figure S1. Recurrent ischemic stroke ( $P=0.336$ )

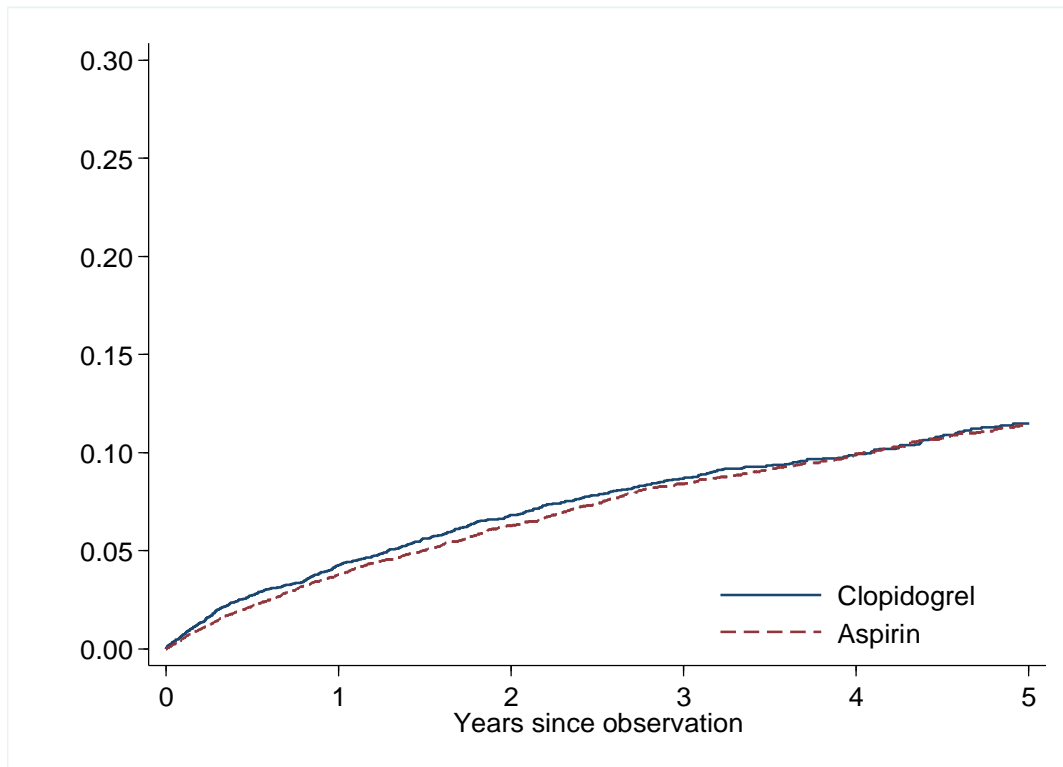


Figure S2. Acute myocardial infarction ( $P=0.317$ )

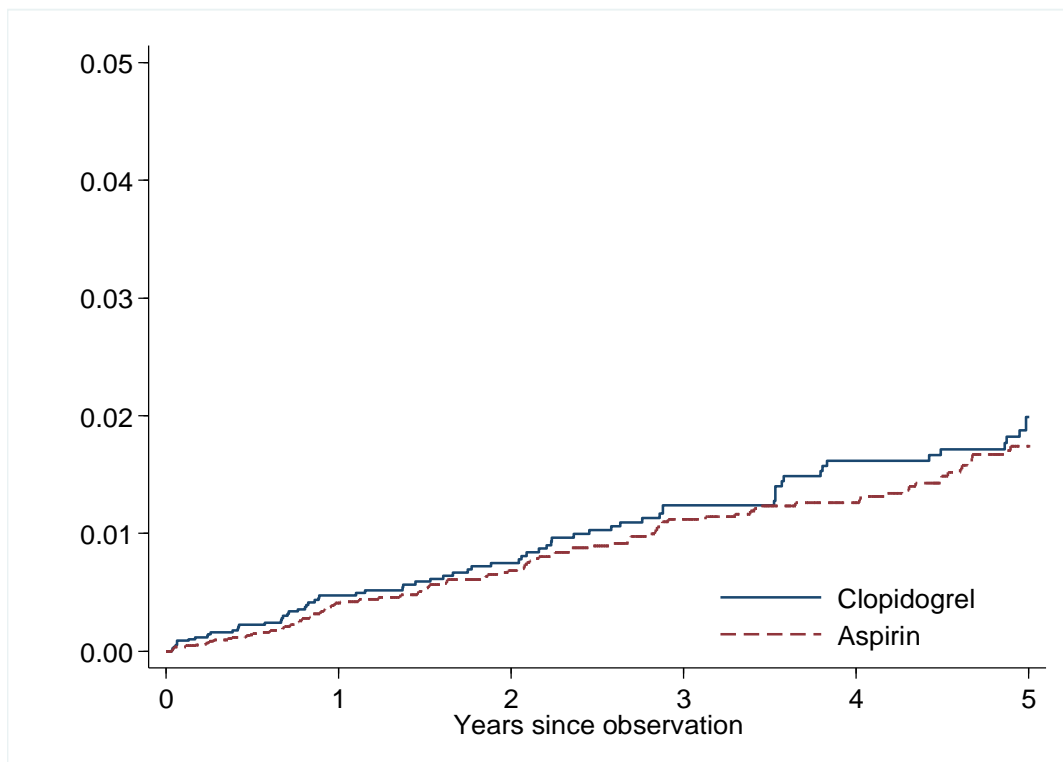


Figure S3. Rcurrent ischemic stroke + acute myocardial infarction ( $P=0.206$ )

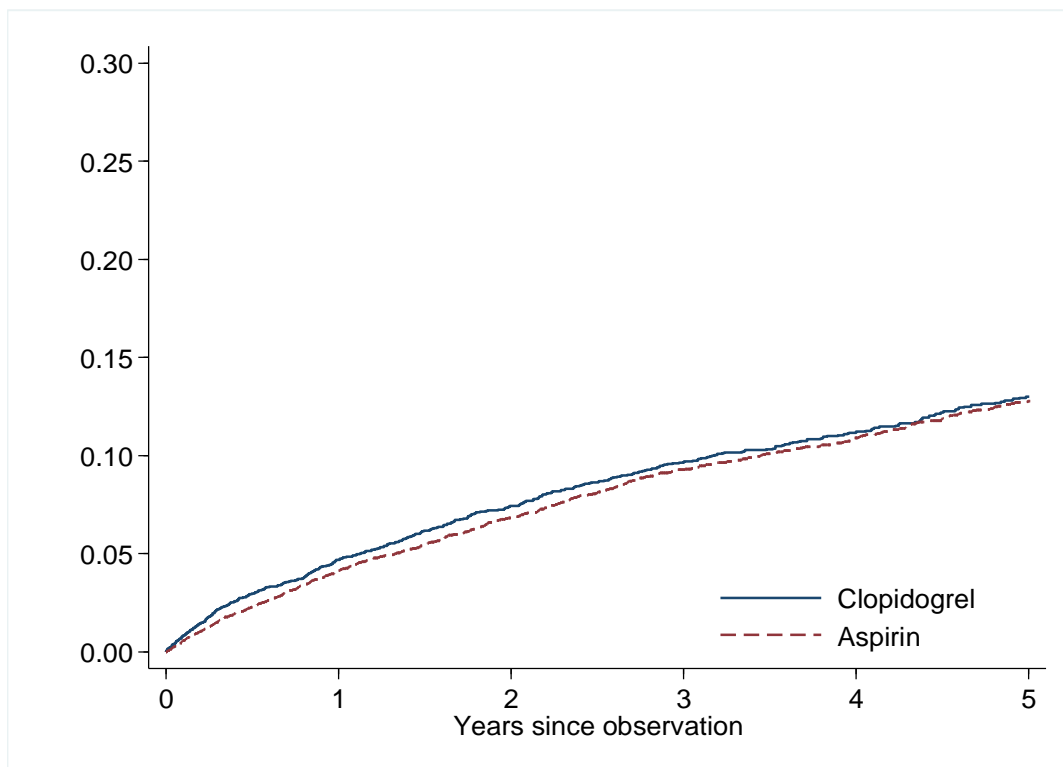


Figure S4. Cardiovascular death ( $P=0.959$ )

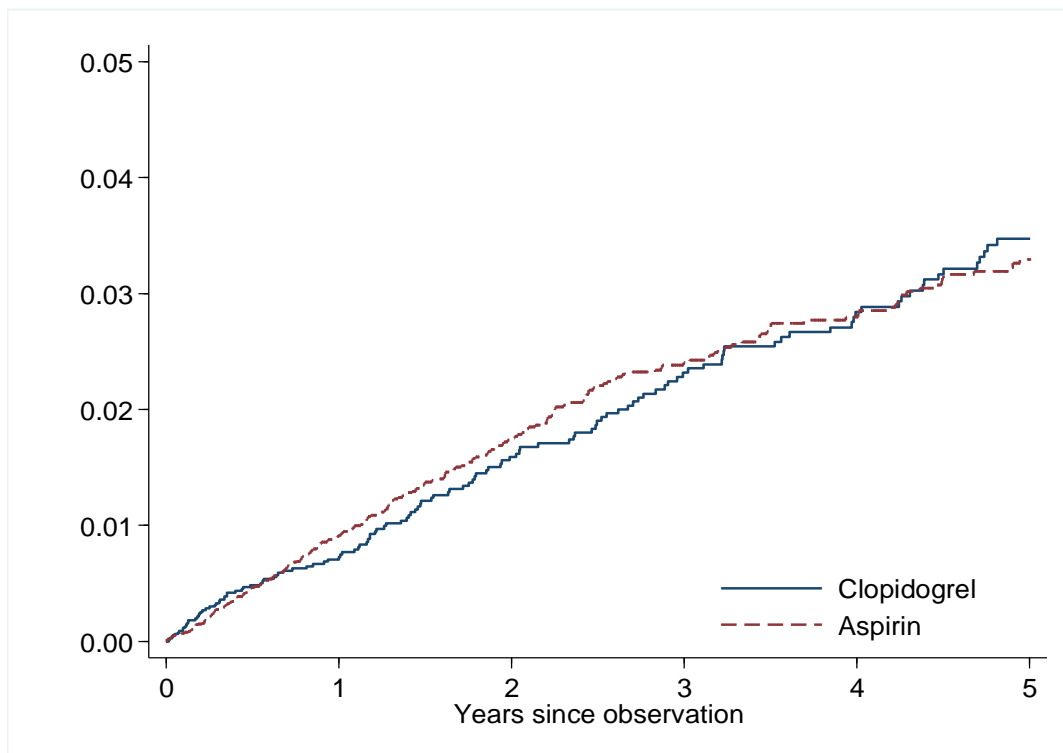


Figure S5. All cause death ( $P=0.942$ )

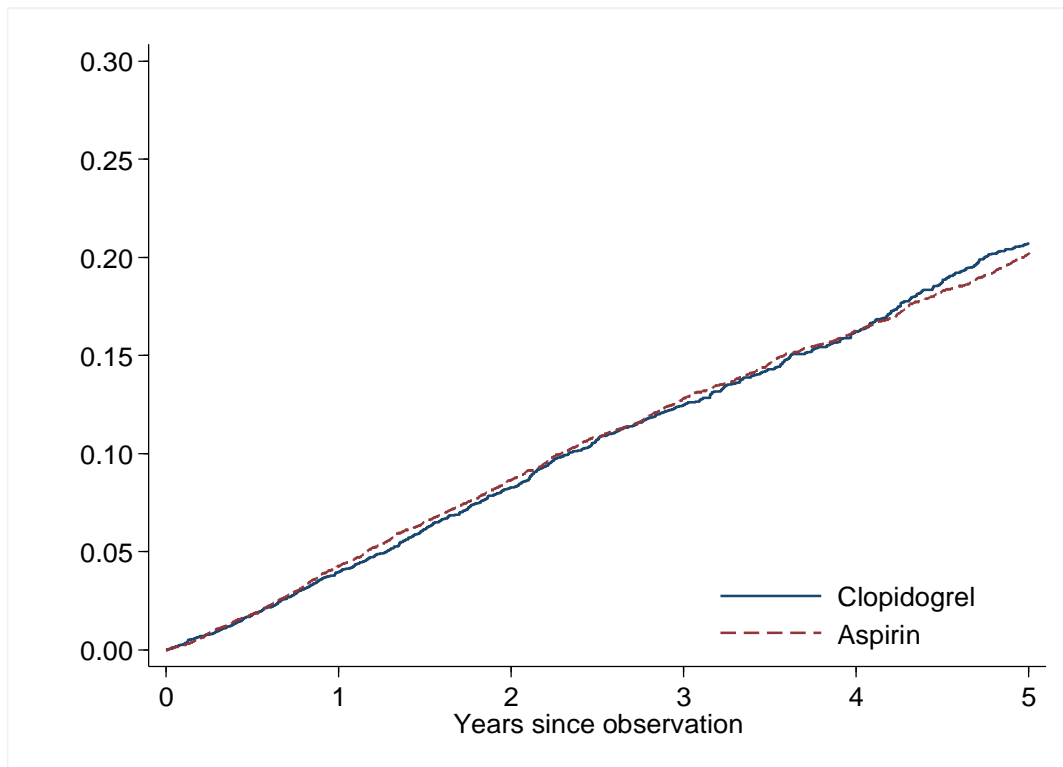


Figure S6. Major bleeding ( $P=0.090$ )

