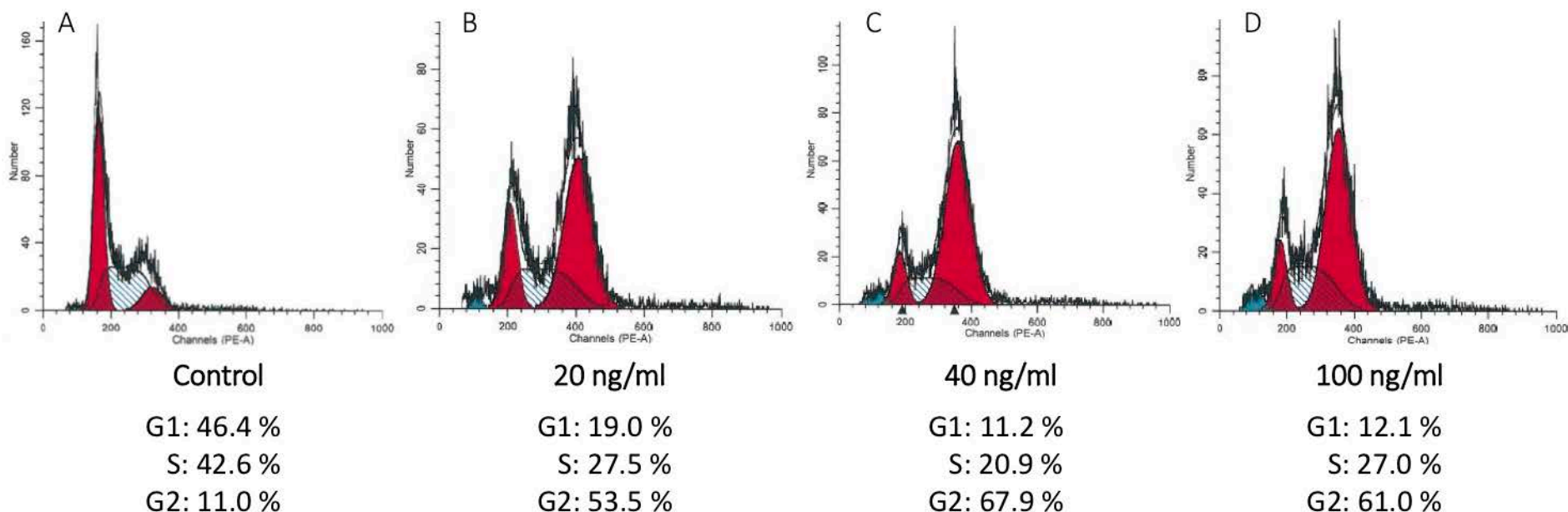


Supplemental Figure 2: Cell cycle profiles for leukemia cell lines SEM and TIB-202 following treatment with nocodazole. SEM, TIB-202 were treated with increasing concentrations of nocodazole (20, 40, 100 ng/ml) for 18 hours. It was found that for SEM, 46.4% of the control cells were in G1, 42.6% were in S and 11.0% were in G2 of the cell cycle (A). Following exposure to 20 ng/ml nocodazole, 19.0% of cells were in G1, 27.5% were in S and 53.5% were in G2 (B). After exposure to 40 ng/ml nocodazole, the percentage of cells in G1, S and G2 were 11.2%, 20.9% and 67.9% respectively (C). After exposure to 100 ng/ml nocodazole, the percentage of cells in G1, S and G2 were 12.1%, 27.0% and 61.0% respectively (D). For TIB-202, it was found that 40.4% of control cells were in G1, 46.8% were in S and 12.8% were in G2 (E). Following exposure to 20 ng/ml nocodazole, 12.9% of cells were in G1, 24.0% were in S and 63.1% were in G2 (F). After exposure to 40 ng/ml nocodazole, the percentage of cells in G1, S and G2 were 4.7%, 20.9% and 74.4% respectively (G). After 72 hours of exposure to AT9283, the percentage of cells in G1, S and G2 were 9.8%, 24.2% and 66.0% respectively (H). Results presented here are representative of two separate experiments.

SEM

Supplemental Figure 1



TIB-202

