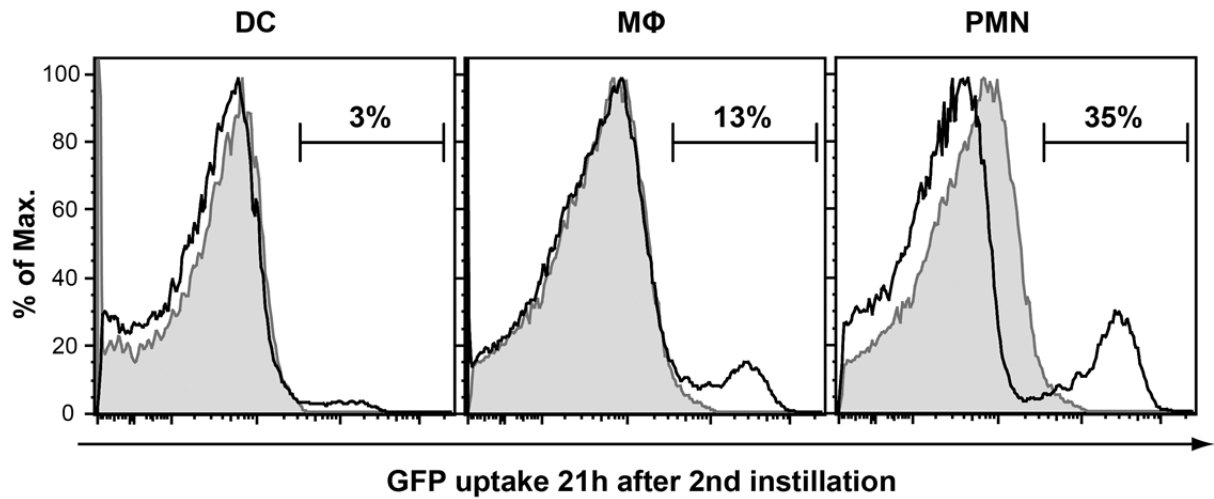


Online supplemental figures

Kidney dendritic cells rapidly induce innate immunity against bacterial pyelonephritis

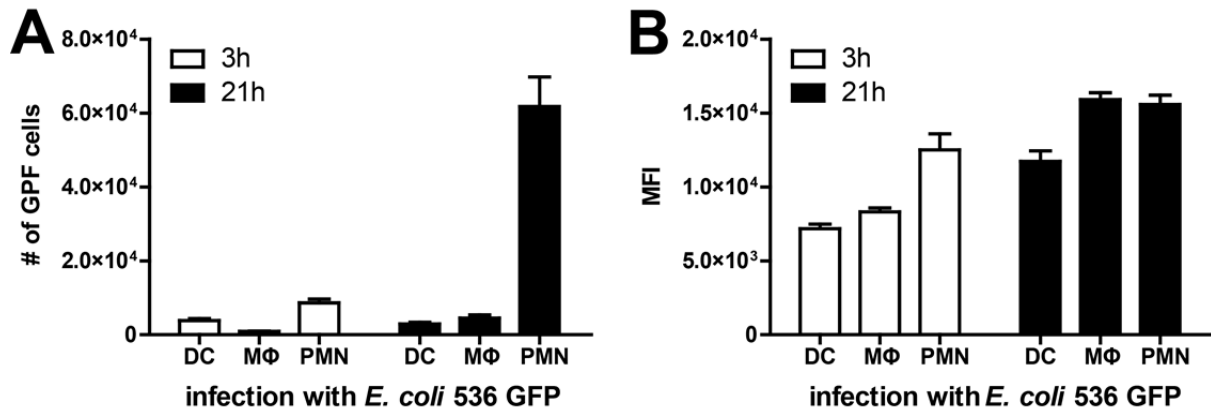
André P. Tittel, Christoph Heuser, Christina Ohliger, Percy A. Knolle, Daniel R. Engel, and Christian Kurts

Institutes of Molecular Medicine and Experimental Immunology (IMMEI), Friedrich-Wilhelms-Universität Bonn, Germany



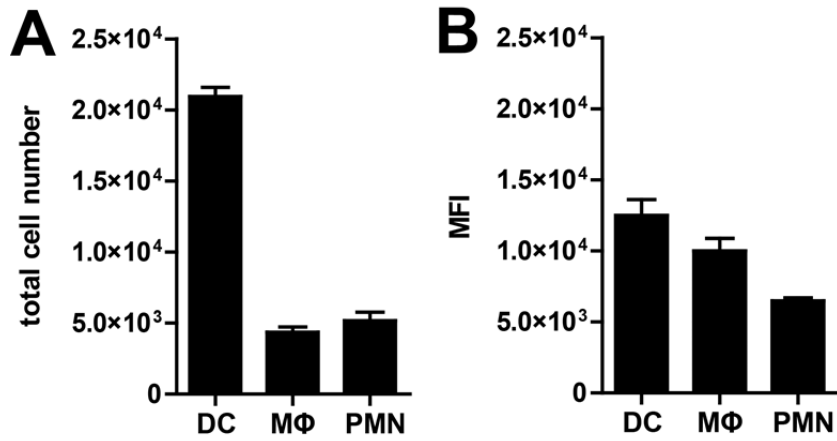
Supplemental Figure 1.

UPEC uptake by intrarenal phagocytes at 21h after second bacterial instillation. Single cell suspensions from kidneys of mice infected with UPEC-GFP were analyzed by flow cytometry at 21h after the second bacterial instillation for GFP uptake in DCs, MΦs and PMN.



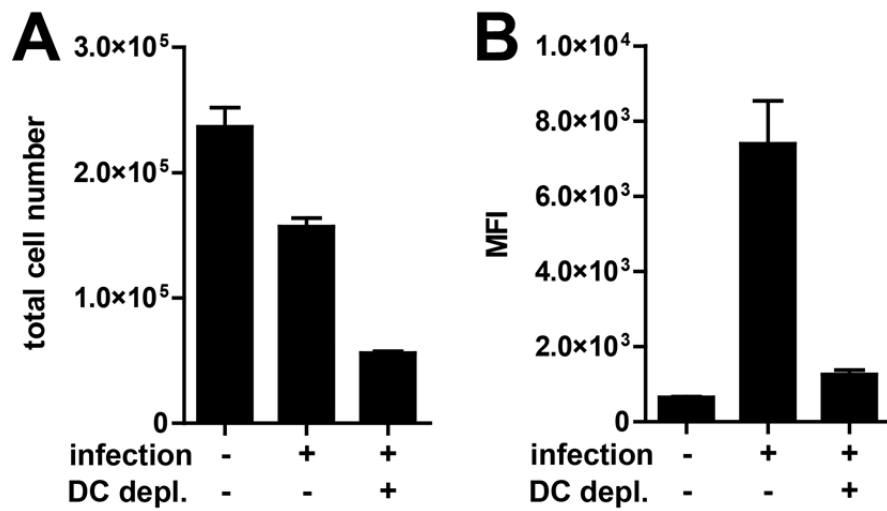
Supplemental Figure 2.

Quantitative analysis of UPEC uptake by intrarenal phagocytes. Single cell suspensions from kidneys of mice infected with UPEC-GFP were analyzed at 3h and 21h after the second bacterial instillation by flow cytometry for the absolute numbers of cells that had taken up GFP (A) and the mean fluorescence intensity of these cells minus background fluorescence determined in mice infected with UPEC that did not express GFP (B). These results were used to calculate the results given in Fig. 3B.



Supplemental Figure 3.

Quantitative analysis of CXCL2 production by intrarenal phagocytes. Single cell suspensions from kidneys of mice infected with UPEC were analyzed at 3h after the second bacterial instillation by flow cytometry for the absolute numbers of cells that produced CXCL2 (A) and the mean fluorescence intensity of these cells minus background fluorescence (B). These results were used to calculate the results given in Fig 3D.



Supplemental Figure 4.

Quantitative analysis of CXCL2 production by intrarenal DCs after DC depletion. Single cell suspensions from kidneys of mice from the experiment shown in Fig. 4C were analyzed at 3 after the second bacterial instillation by flow cytometry for the absolute numbers of cells that produced CXCL2 (A) and the mean fluorescence intensity of these cells minus background fluorescence (B). These results were used to calculate the results given in Fig 4C.