

## Supplemental Figure Legends

**Supplemental Figure 1. Induction of Mdm2 by cytosolic DNA is time- and dose-dependent.** NIH3T3 cells were stimulated with various doses of double-stranded immunostimulatory DNA (ISD) or double-stranded poly I:polyC (pI:C) RNA complexed with cationic lipid (CL, Lipofectamine2000 1:1). Total RNA was prepared for RT-PCR after 6 hours of stimulation in the dose studies (left panel) and after 3, 6, and 9 hours in the time course studies (right panel). Data represent mean ratios of target mRNA to the respective 18S rRNA  $\pm$  standard deviation from three independent experiments.

**Supplemental Figure 2.** NIH3T3 cells were stimulated with ISD and pI:C+CL for 18 hours, later total protein was extracted and immunoblotting was performed using specific antibodies for Mdm2, Ser-166 phosphorylation of Mdm2 and  $\beta$ -actin.

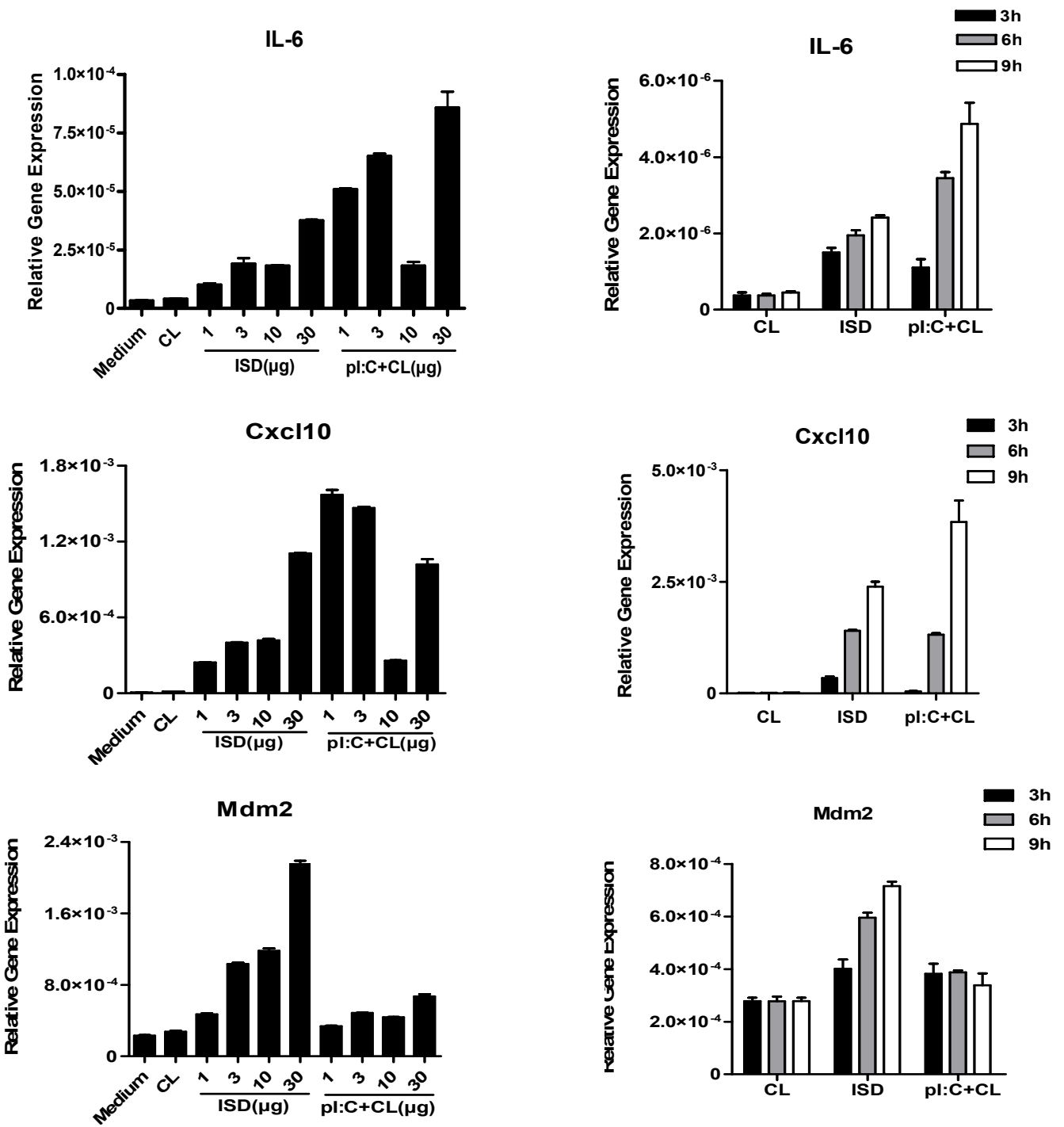
**Supplemental Figure 3. (A)** Mdm2 quantification from Figure 2D western blot. Mdm2 expression normalised with beta actin **(B)** p53 regulated genes Ubd and Cdc25a expression in spleens of MRL-Fas<sup>lpr</sup> mice and MRL-WT mice. Data represent in mean ratios of target mRNA to the respective 18S rRNA  $\pm$  standard deviation.

**Supplemental Figure 4.** (A) 12 week old MRL-Fas<sup>lpr</sup> mice were treated either with vehicle or nutlin-3a for 4 weeks. The left image shows representative spleens from both groups. The right graph shows spleen weight per 100 g of body weight. Data are representative for 12 mice in each group. (B) 12 week old MRL-Fas<sup>lpr</sup> mice were treated either with vehicle or nutlin-3a for 4 weeks. The graph shows mesenteric lymphnode weight per 100 g of body weight. Data are representative for 12 mice in each group.

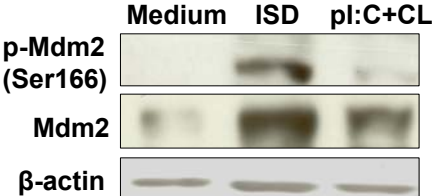
**Supplemental Figure 5**

12 week old MRL-Fas<sup>lpr</sup> mice were treated either with vehicle or nutlin-3a for 4 weeks. Plasma was collected at 14 weeks and 16 weeks time points. Plasma levels of total IgG antibodies were quantified by ELISA. Data are means of at least 12 mice in each group  $\pm$  SD. \*  $p < 0.05$ , \*\*\*  $p < 0.001$  versus vehicle-treated MRL-Fas<sup>lpr</sup> mice

# Supplemental Figure 1

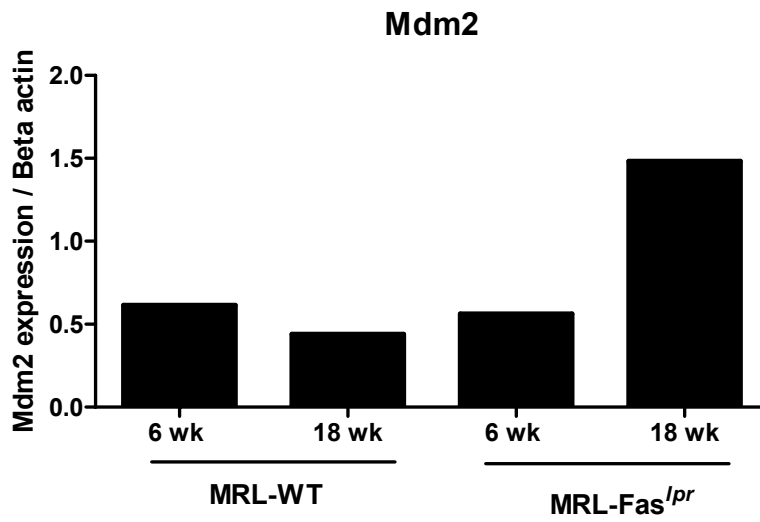


Supplemental Figure 2

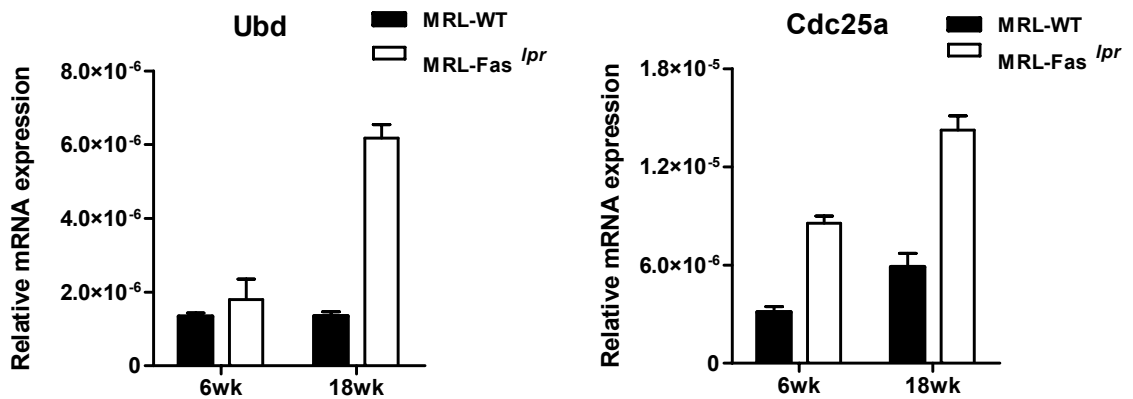


### Supplemental Figure 3

**A**

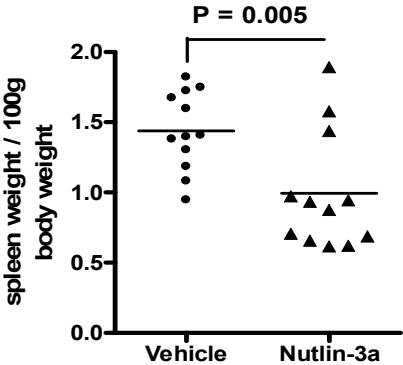
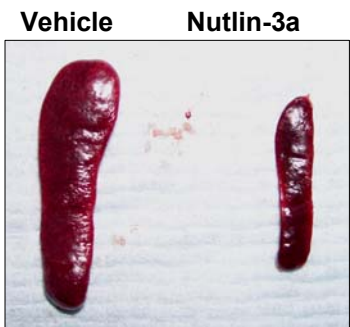


**B**

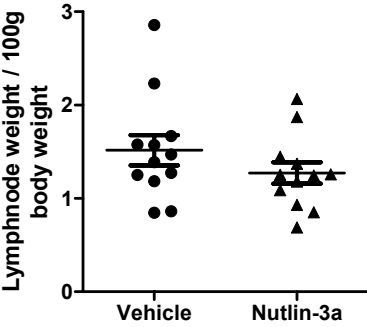


# Supplemental Figure 4

**A**



**B**



# Supplemental Figure 5

