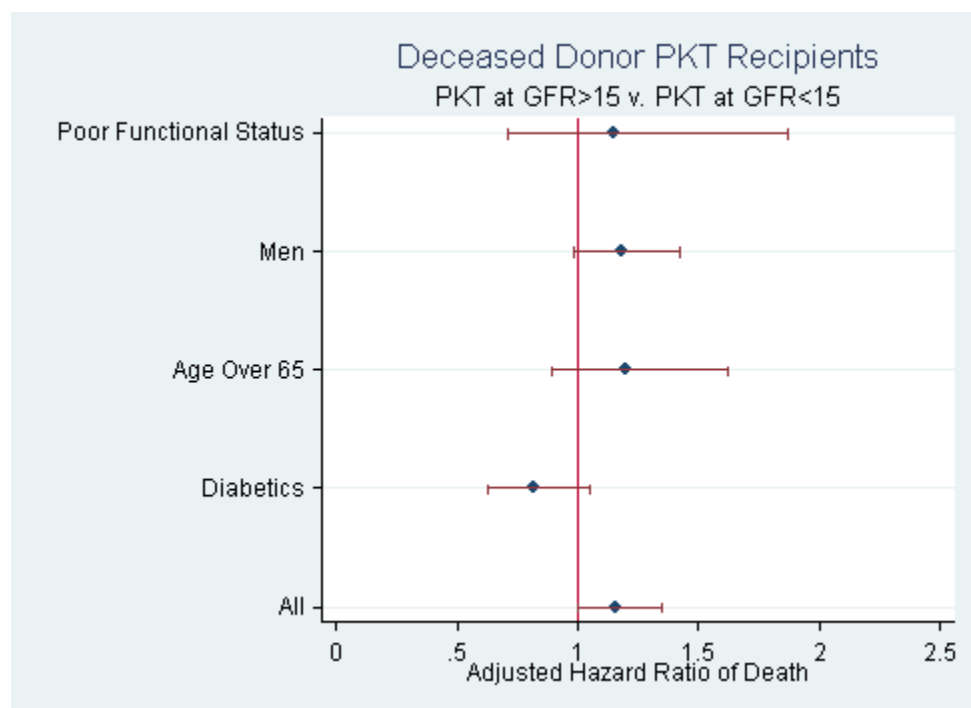
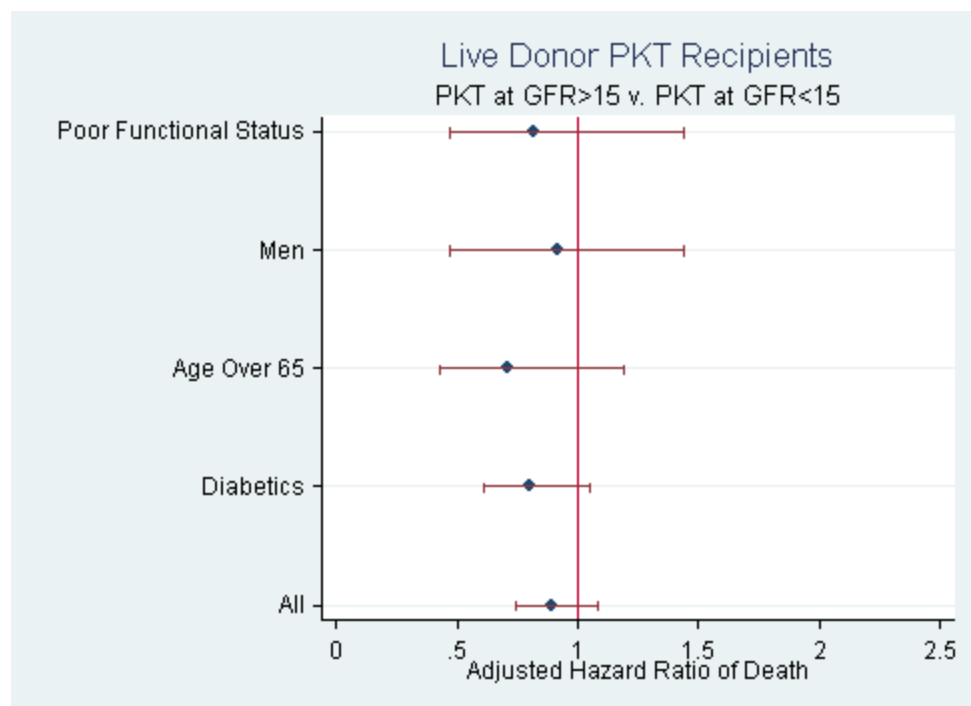
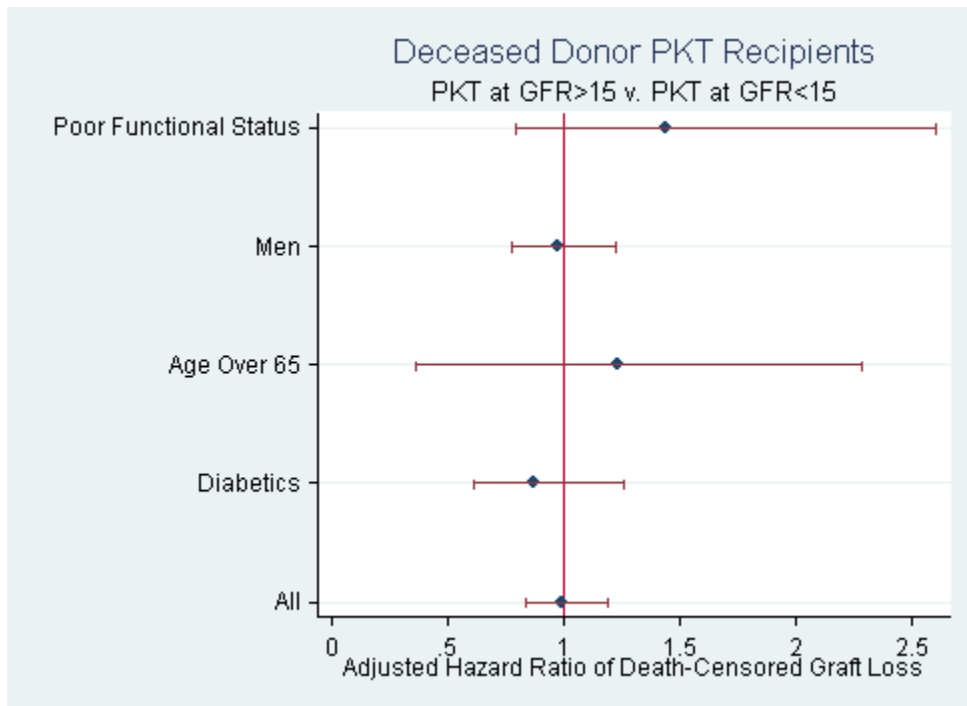
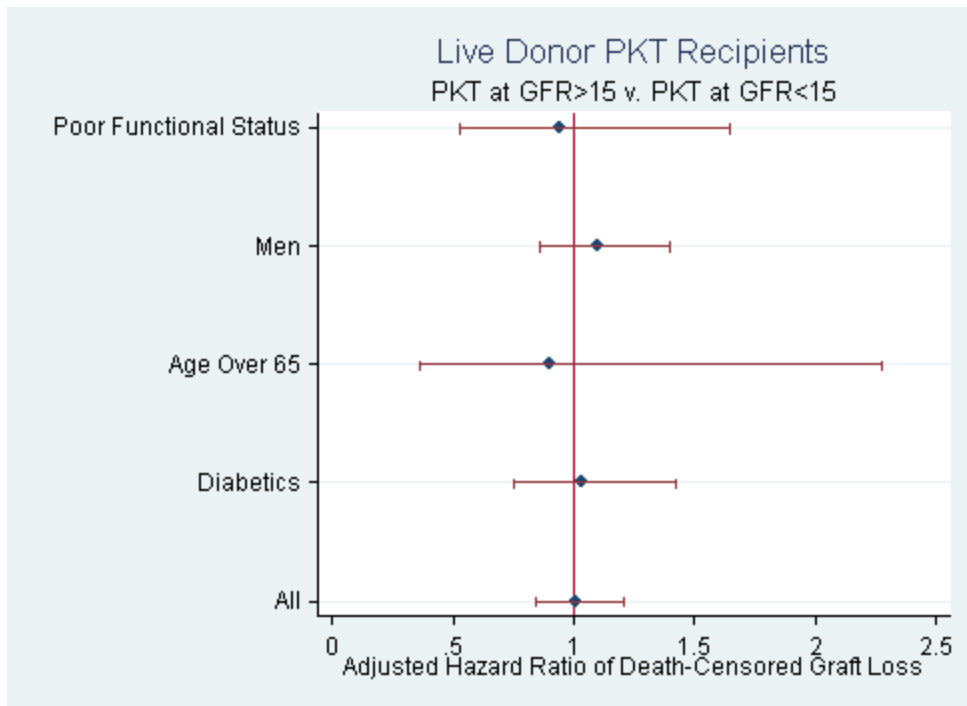


**Supplementary Figure 1:** Adjusted hazard ratio of (A) death and (B) death-censored graft loss associated with early PKT\*

(A)



(B)



\*Survival analysis adjusted by transplant year as well as all variables specified in standard Scientific Registry for Transplant Recipients (SRTR) outcome models for 3-year post-kidney transplant patient survival.