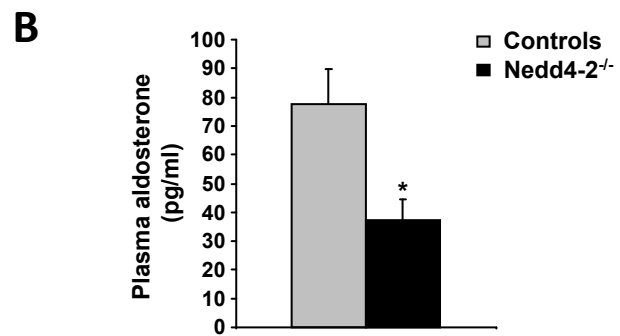
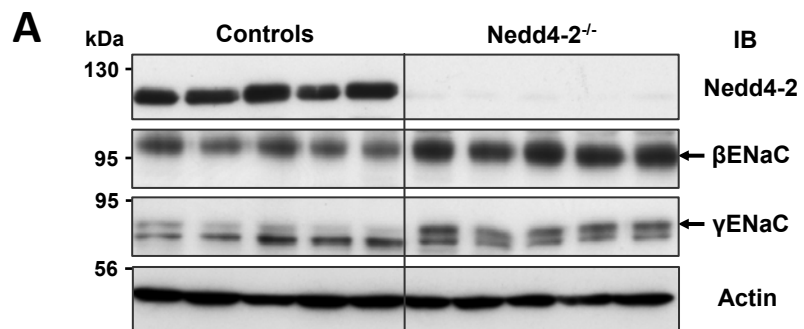


Supplementary figure legend

Suppl. Figure 1. Inducible renal tubule-specific Nedd4-2 knockout mice exhibit increased ENaC protein expression and decreased plasma aldosterone levels. Protein expression of β - and γ -ENaC subunits (*A*) and plasma aldosterone levels (*B*) were analyzed in induced Nedd4-2^{Pax8/LC1} knockout (Nedd4-2^{-/-}) mice and control littermates after doxycycline treatment and 8 days of high-Na⁺ diet. *p<0.05 vs controls.



Suppl. Figure 1
Arroyo et al.