

**Webtable 1: Baseline cystatin C by treatment allocation**

<b>Cystatin C (mg/dL)</b>	<b>Simvastatin plus</b>	
	<b>ezetimibe (n=3116)</b>	<b>Placebo (n=3129)</b>
Mean (SD)	2.55 (0.98)	2.55 (0.97)
<2.0	1022 (34%)	1019 (34%)
≥2.0 to <3.0	1126 (37%)	1160 (38%)
≥3.0	857 (29%)	844 (28%)
Not available	111	106

Cystatin C concentration updated at 1 year for patients originally allocated simvastatin only who were rerandomised to ezetimibe/simvastatin or placebo. Percentages exclude participants for whom data were not available for that category.

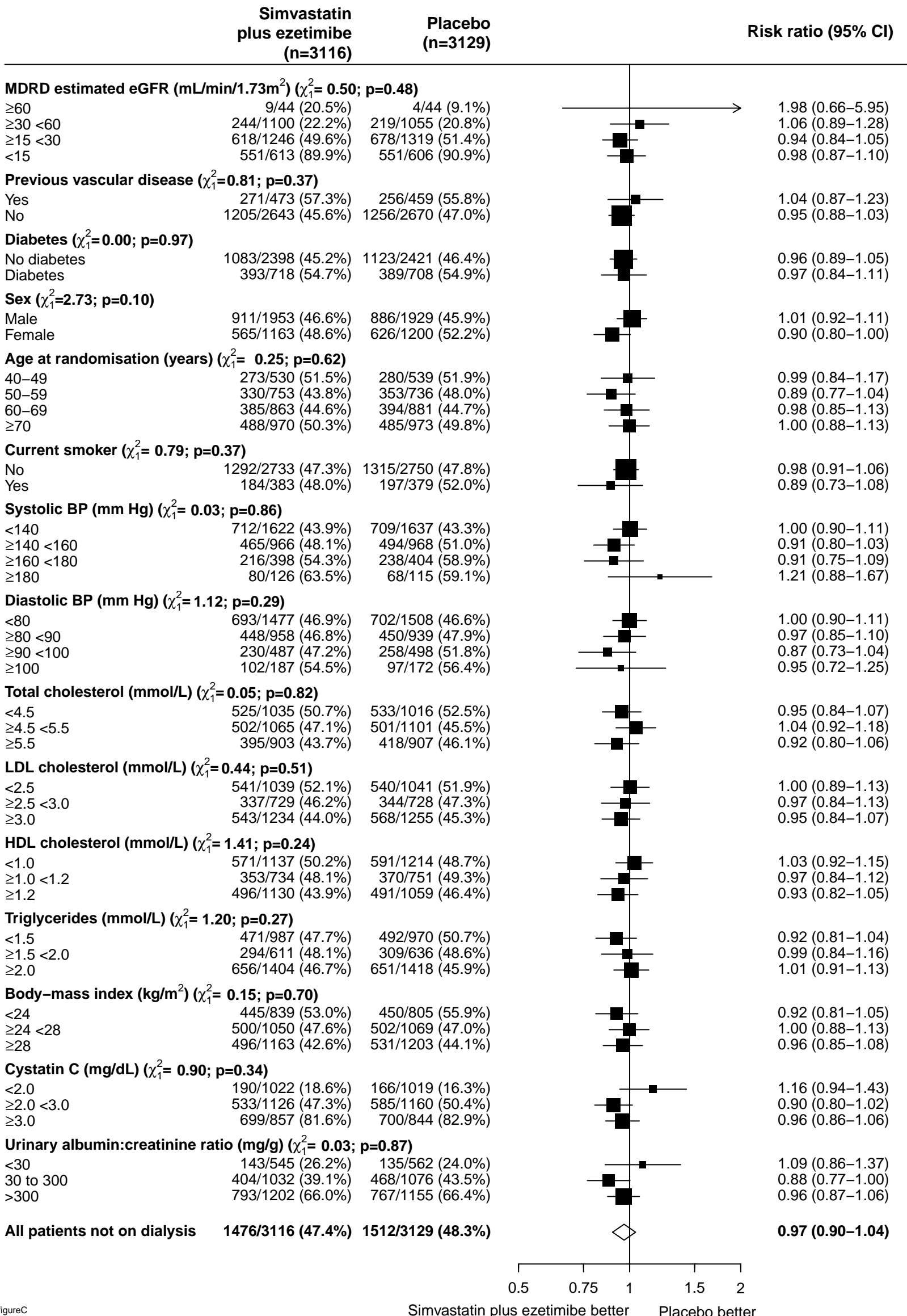
**Webtable 2: Number of local creatinine measurements per person and estimated rate of change in eGFR (among the 6027 patients not on dialysis at randomisation with baseline eGFR available)**

No. local eGFRs	No. patients	Total no. eGFRs	Rate of change in eGFR (ml/min/1.73m <sup>2</sup> /yr) among patients with >1 local creatinine			
			Central baseline eGFR (ml/min/1.73m <sup>2</sup> )	Mean (SD)	Outliers*	Mean (SD) excluding outliers
1	219	219	15.8 (12.2)		.	
2	327	654	16.2 (10.6)	-6.3 (23.4)	.	-
3	444	1332	17.9 (10.7)	-4.7 (12.0)	.	-
4	387	1548	19.8 (11.6)	-3.9 (6.6)	4	-4.1 (6.5)
5	386	1930	22.9 (11.2)	-3.7 (6.2)	4	-3.5 (5.9)
6	364	2184	24.5 (11.8)	-2.5 (4.9)	3	-2.7 (4.2)
7	410	2870	26.0 (12.2)	-2.1 (4.0)	9	-2.3 (3.1)
8	357	2856	26.8 (11.9)	-2.5 (3.1)	2	-2.5 (3.1)
9	338	3042	27.0 (11.6)	-1.9 (2.7)	1	-2.0 (2.6)
10	780	7800	31.6 (13.4)	-1.0 (2.5)	8	-1.0 (2.5)
11	666	7326	32.1 (13.6)	-0.8 (2.4)	13	-0.9 (2.2)
12	493	5916	31.3 (10.0)	-0.6 (2.0)	4	-0.7 (1.8)
13	427	5551	32.4 (10.3)	-0.7 (1.7)	1	-0.7 (1.7)
14	261	3654	31.1 (9.9)	-0.8 (1.4)	0	-0.8 (1.4)
15	116	1740	31.3 (9.2)	-1.1 (1.7)	1	-1.0 (1.6)
16+	52	885	31.8 (13.6)	-0.5 (2.1)	0	-0.5 (2.1)

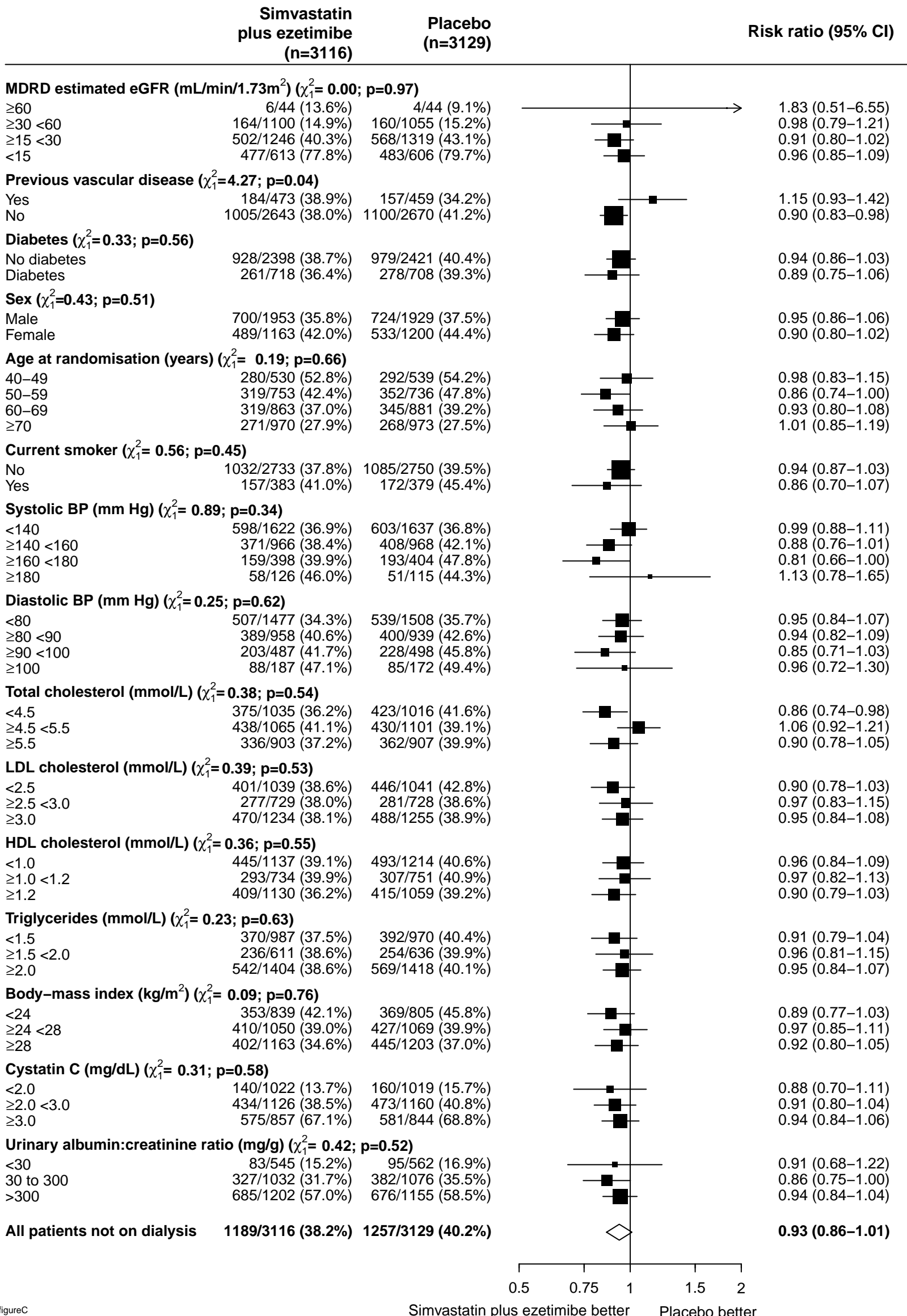
Local creatinines recorded after the date of ESRD are excluded

\* Number of patients whose average deviation from own fitted slope was >9.0 mL/min/1.73m<sup>2</sup>

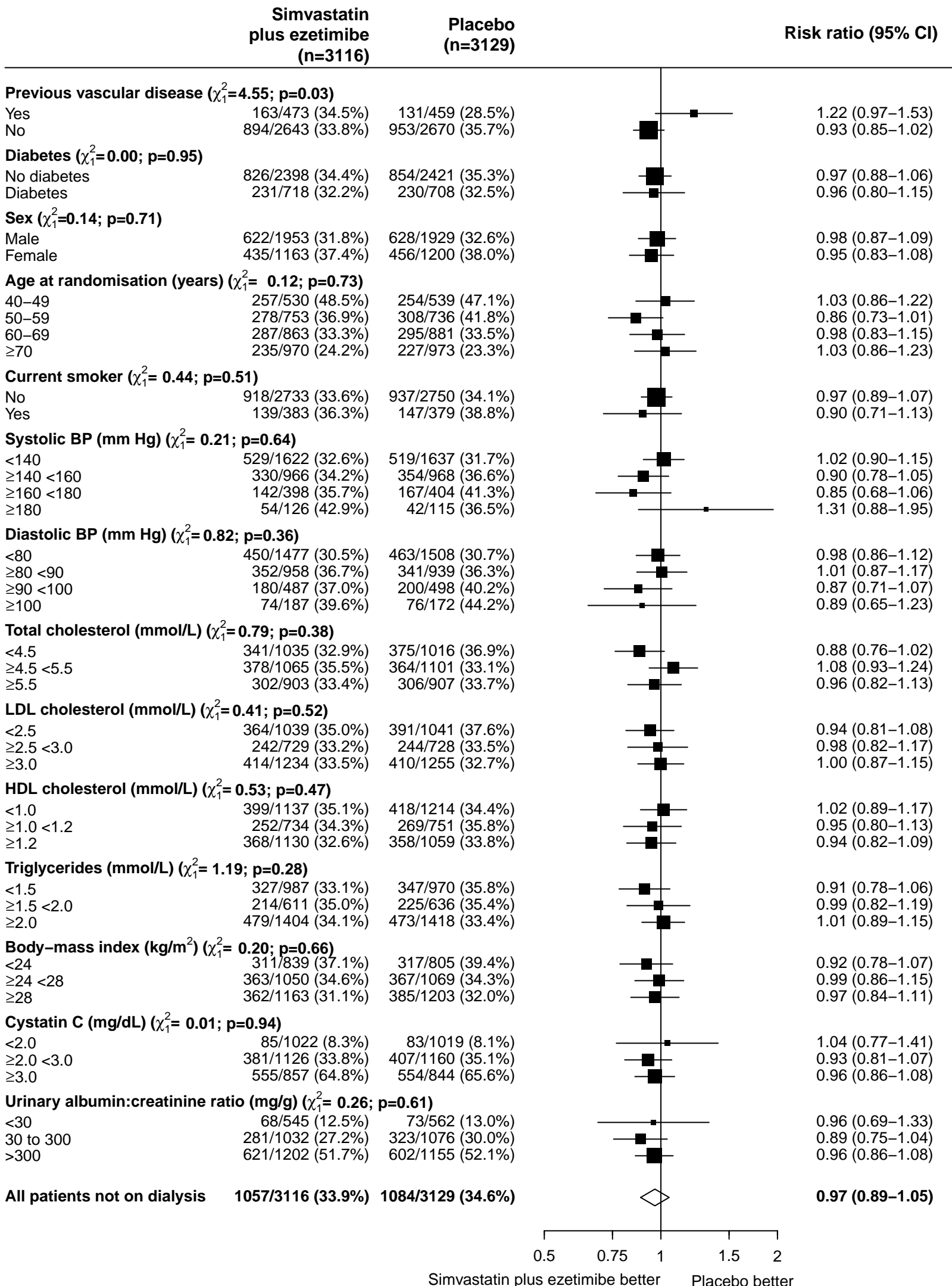
**Web figure 1: Effects of allocation to simvastatin plus ezetimibe on end stage renal disease or death by baseline characteristics, among 6245 patients not on dialysis at randomisation**



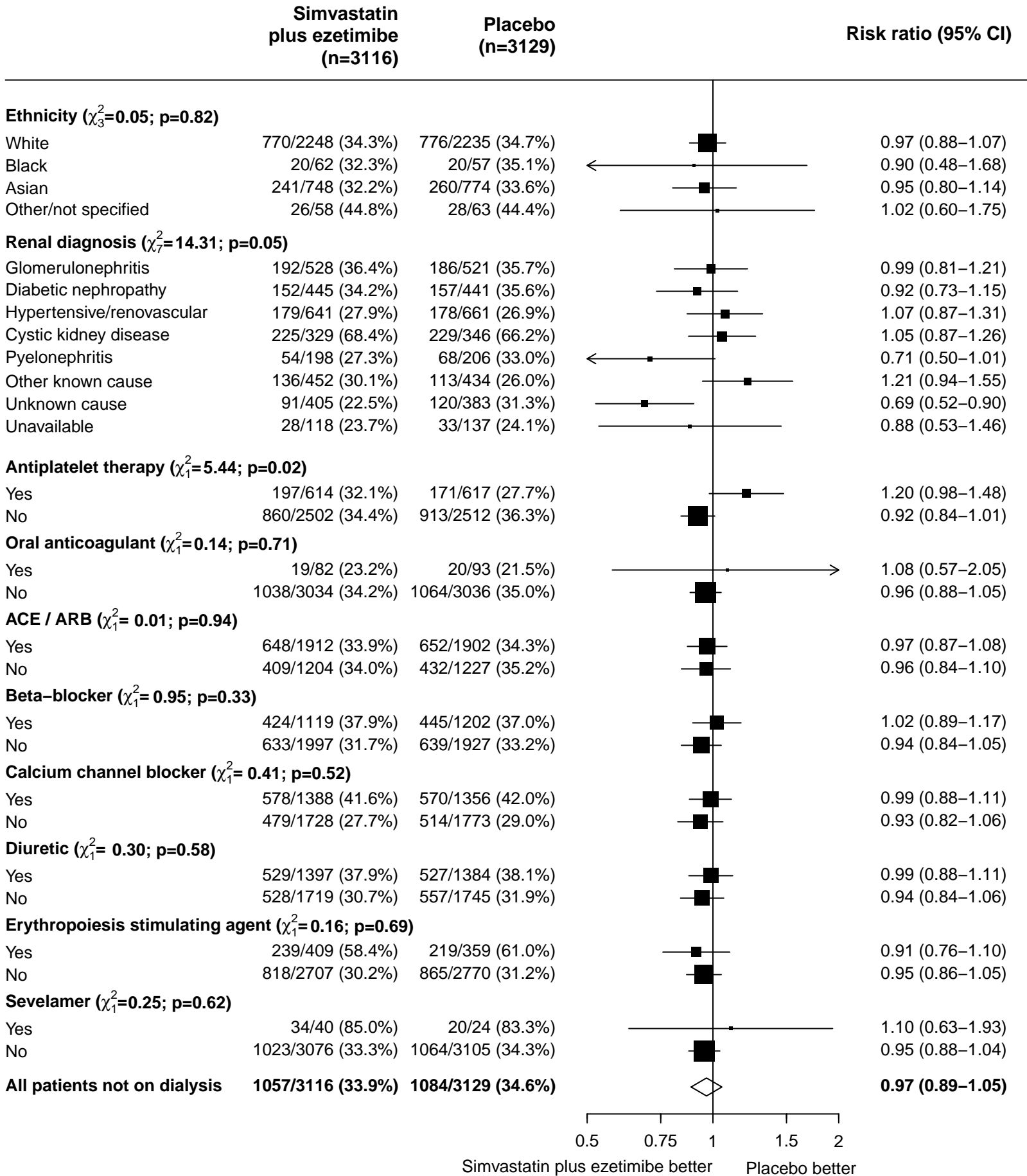
# Web figure 2: Effects of allocation to simvastatin plus ezetimibe on end stage renal disease or doubling in creatinine by baseline characteristics, among 6245 patients not on dialysis at randomisation



**Web figure 3: Effects of allocation to simvastatin plus ezetimibe on end stage renal disease by other baseline characteristics, among 6245 patients not on dialysis at randomisation**



**Web figure 4: Effects of allocation to simvastatin plus ezetimibe on end stage renal disease by other baseline characteristics, among 6245 patients not on dialysis at randomisation**



**Web figure 5: Mean (95% CI) local eGFR over time by treatment allocation, stratified by the number of local eGFRs recorded for each patient (black=placebo, white=simvastatin plus ezetimibe)**

