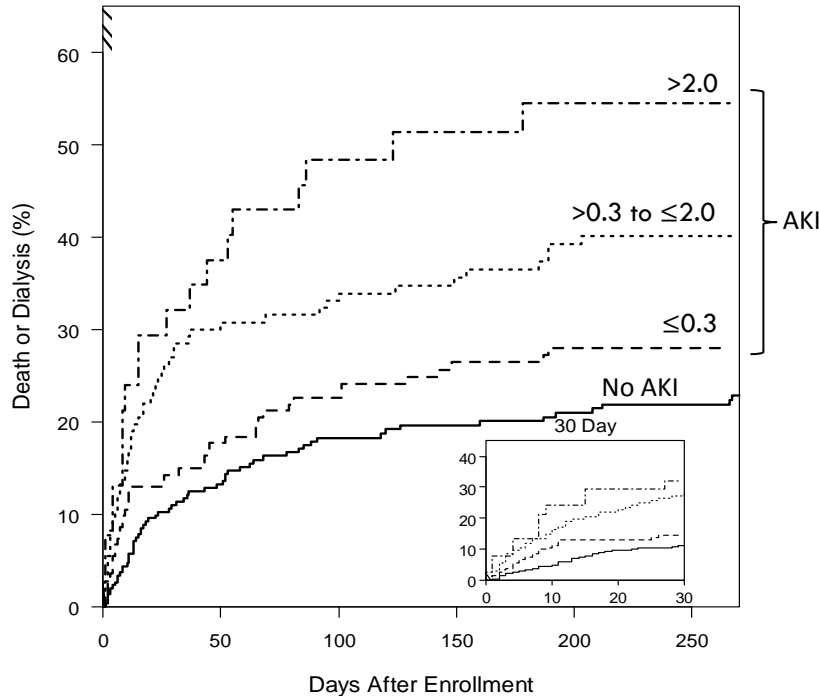


**Supplemental Figure 1: Kaplan-Meier curves for Death or Dialysis within the 9 months after study enrollment, excluding those who received RRT during their index hospitalization.**



Days after Enrollment	Number At Risk						
	0	50	100	150	200	250	300
No AKI	303	223	207	177	173	165	164
AKI							
$\le 0.3$	165	118	102	95	92	92	92
$>0.3$ to $\le 2.0$	145	91	83	74	69	69	69
$>2.0$	39	23	20	17	16	16	16

Cumulative death or dialysis within nine months (and 30-days, inset) for non-AKI patients (No AKI, solid, N = 303) and AKI patients (KDIGO stage 1 or greater AKI within 72 hours after urine [TIMP-2]•[IGFBP7] sample collection) with urinary [TIMP-2]•[IGFBP7] ranges of  $\le 0.3$  (long dash),  $>0.3$  to  $\le 2.0$  (short dash), and  $>2.0$  (short-long dash) (N = 165, 145, and 39 patients, respectively). For both 9-months and 30-days, log-rank  $p < 0.0001$ . Patients with in-hospital RRT have been excluded from this analysis.