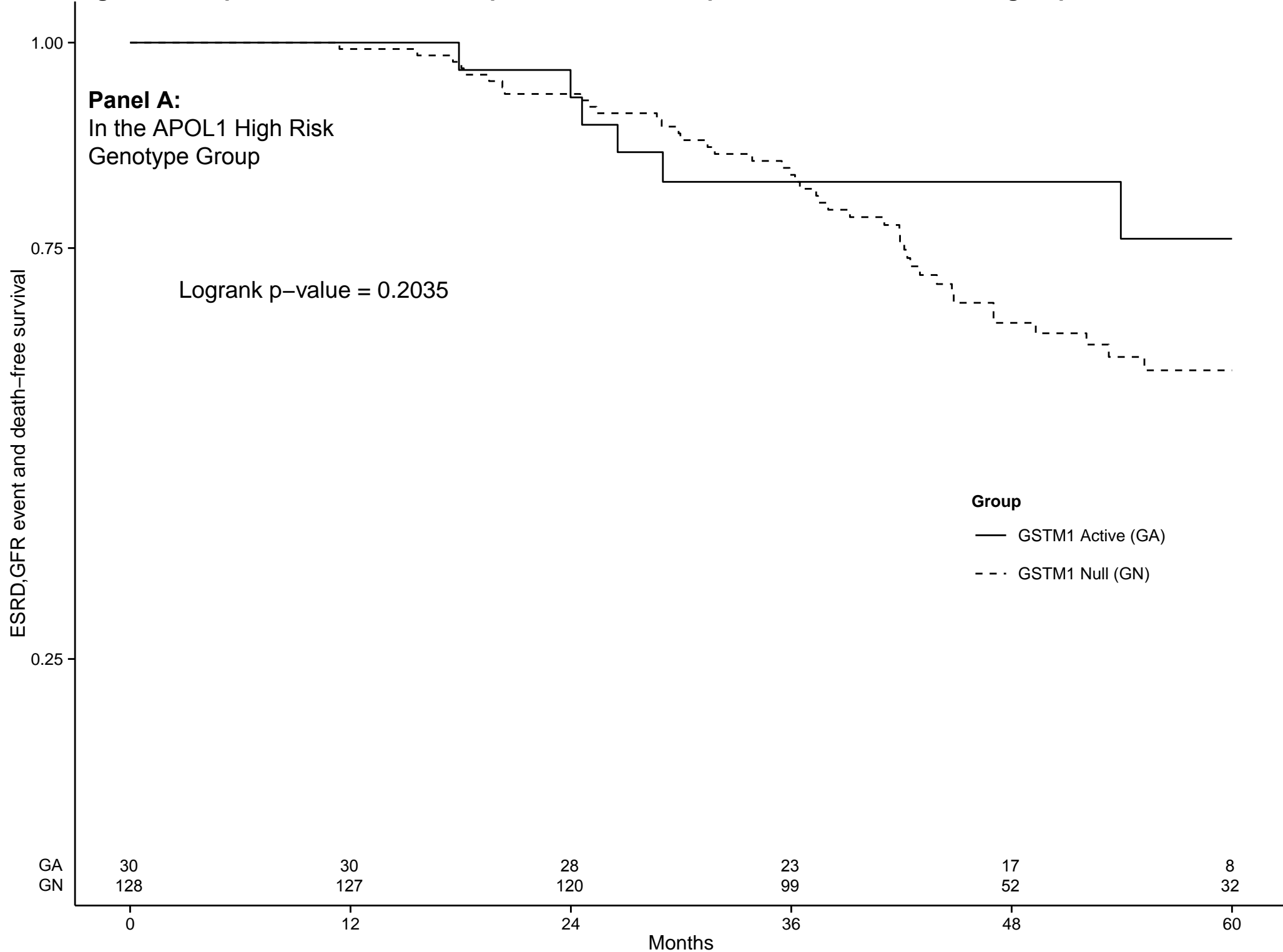
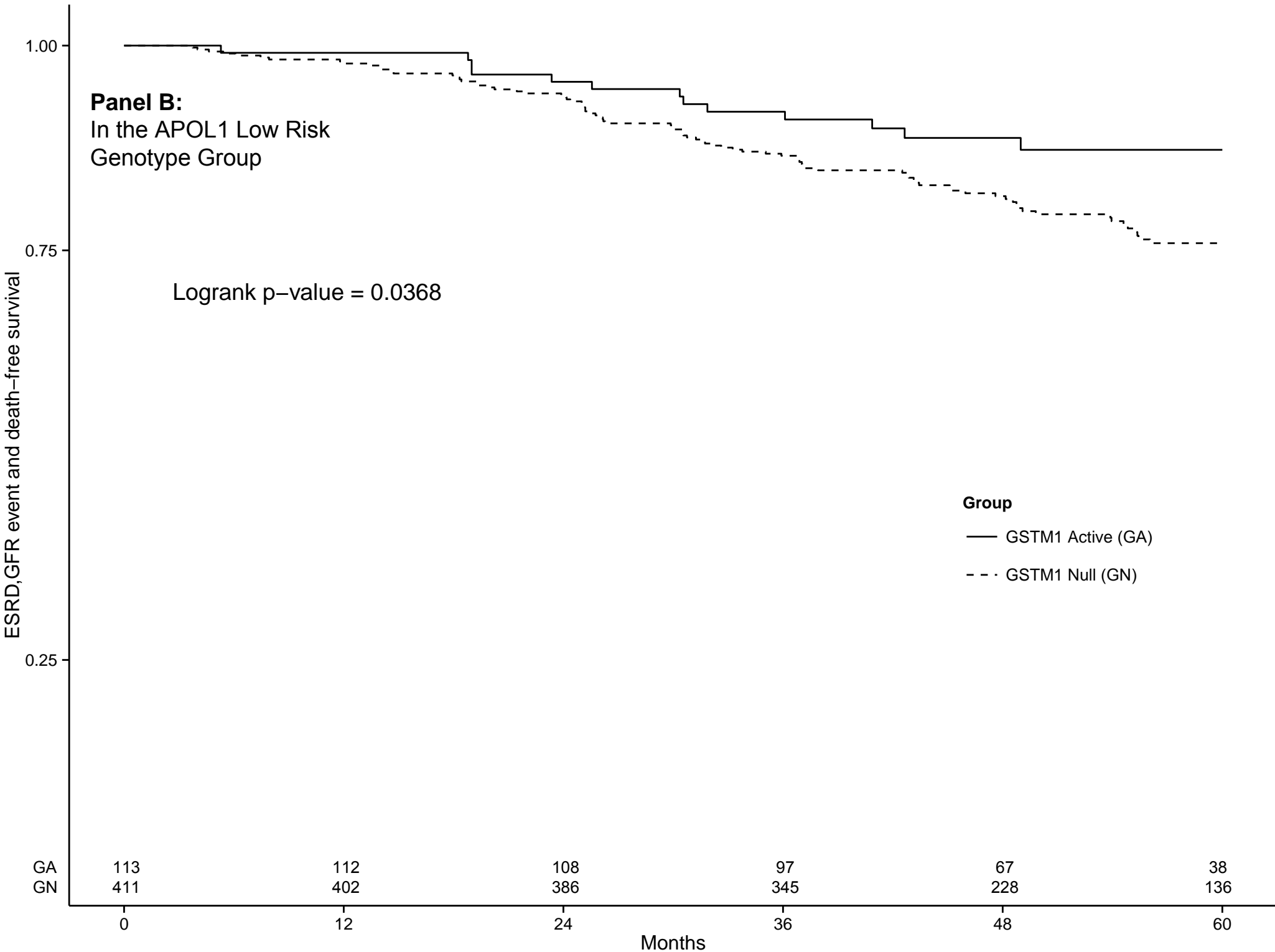
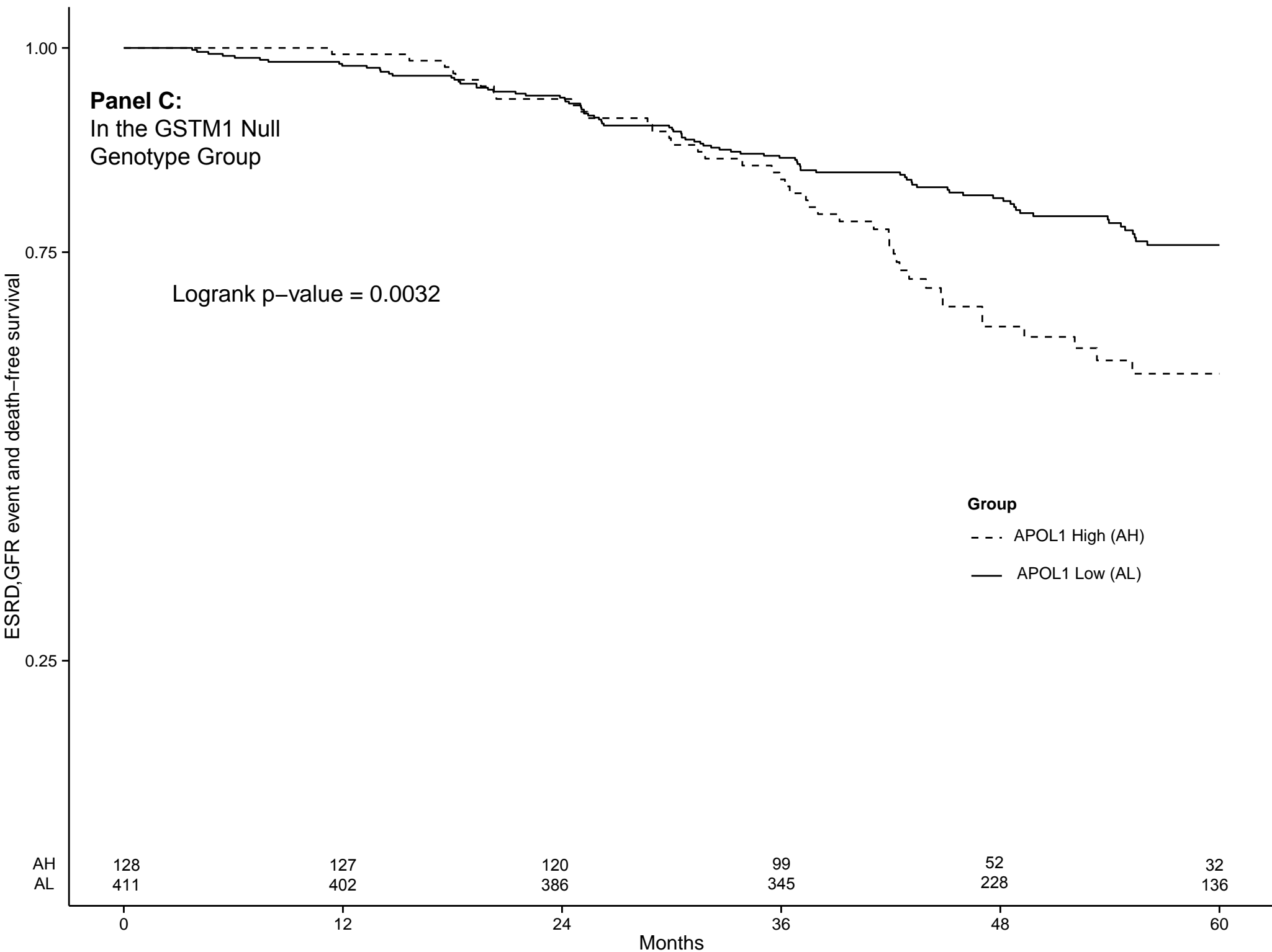
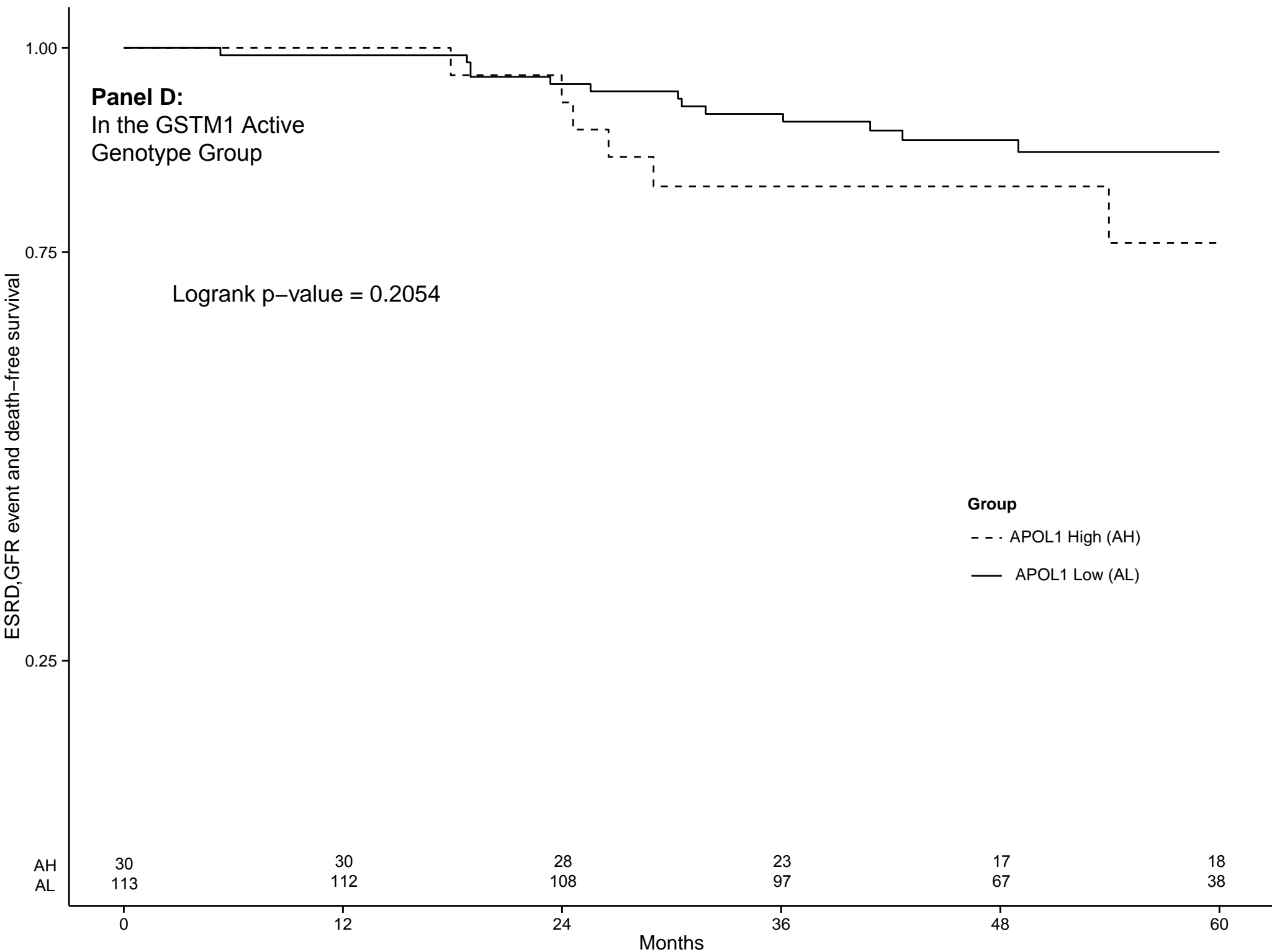


Figure S1. Kaplan-Meier survival comparison for the composite outcome in four subgroups









Supplemental Figure Legend

Figure S1. Kaplan-Meier survival comparison for the composite outcome in four

subgroups. Figure shows the proportion of patients who were free from the composite outcome of GFR event, incident ESRD, or death in the *APOL1* high risk genotype group (Panel A) , in the *APOL1* low risk genotype group (Panel B) , in the *GSTM1* null genotype group (Panel C) or in the *GSTM1* active genotype group (Panel D). GFR event was defined as follows: an absolute $25 \text{ ml/min/1.73 m}^2$ or a 50% reduction in the glomerular filtration rate. The numbers of subjects at risk at yearly time points by subgroups are shown at the bottom of each figure panel.