

Supplementary Material

accompanying the manuscript

CD103+ dendritic cells elicit CD8+ T cell responses to accelerate kidney injury in Adriamycin nephropathy

Qi Cao, Junyu Lu, Qing Li, Changqi Wang, Xin Maggie Wang, Vincent W.S. Lee, Chengshi Wang, Hanh Nguyen, Guoping Zheng, Ye Zhao, Stephen I. Alexander, Yiping Wang and David C.H. Harris

This PDF file includes:

Figs. S1 to S3

Table S1

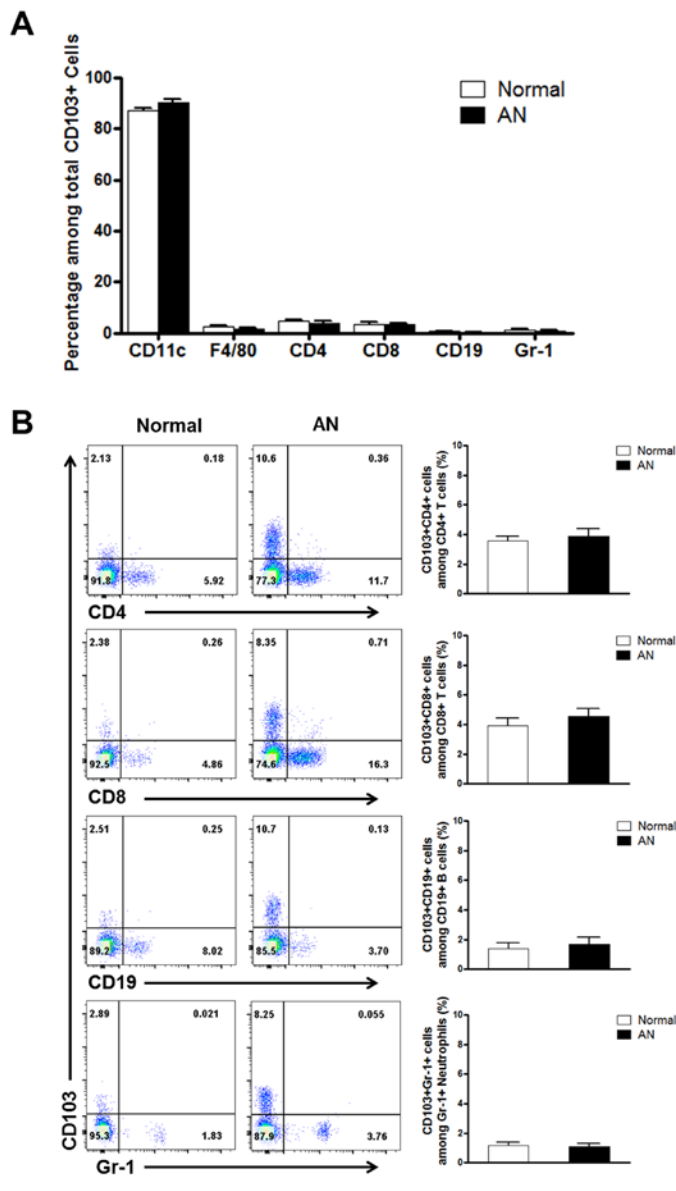


Figure S1. CD103 is specifically expressed on CD11c+ DCs

(A) FACS analysis of expression of CD11c, F4/80, CD4, CD8, CD19 and Gr-1 by CD103+ cells from kidney of normal and AN (week 4) BALB/c mice. Data represent the mean \pm SEM of at least four independent experiments using 4-8 pooled kidneys. (B) FACS analysis of expression of CD103 antigen by CD4+ T cells, CD8+ T cells, CD19+ B cells and Gr-1+ neutrophils from kidney of normal and AN (week 4) BALB/c mouse. Data represent the mean \pm SEM of at least four independent experiments using 4-8 pooled kidneys.

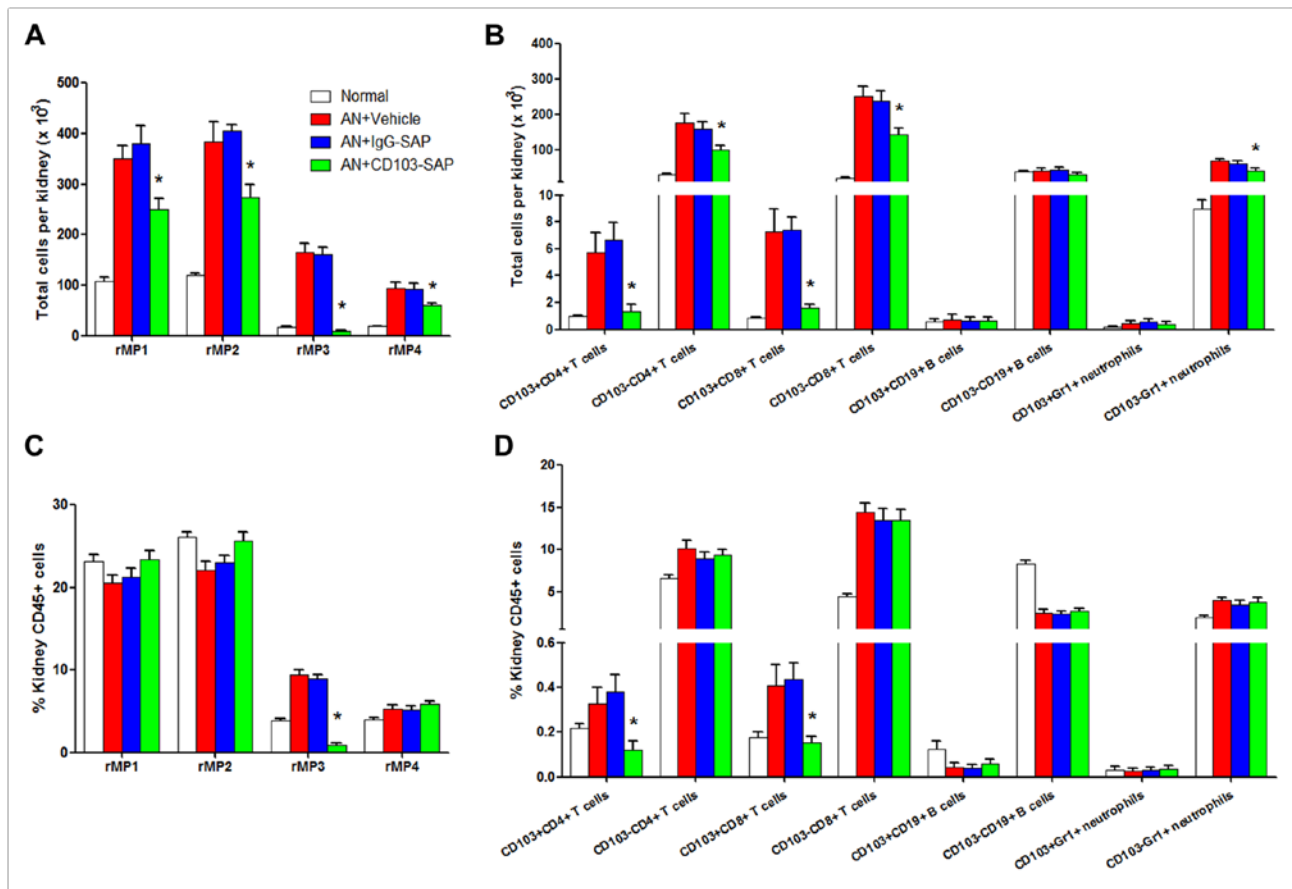


Figure S2. CD103-SAP antibody predominantly depletes CD103+ DCs in kidney of AN mice.

Total cell number of four rMP populations (A), as well as CD103+ or CD103- CD4 T cells, CD8 T cells, B cells and neutrophils (B) per kidney of normal, AN+Vehicle, AN+IgG-SAP and AN+CD103-SAP mice at day 28 after ADR injection. Frequencies of four rMP populations (C), as well as CD103+ or CD103- CD4 T cells, CD8 T cells, B cells and neutrophils (D) among kidney CD45+ leukocytes of normal, AN+Vehicle, AN+IgG-SAP and AN+CD103-SAP mice at day 28 after ADR injection. The values represent the mean \pm SEM of evaluations from each group (n=7 per group). *P<0.05 vs. AN+Vehicle, AN+IgG-SAP.

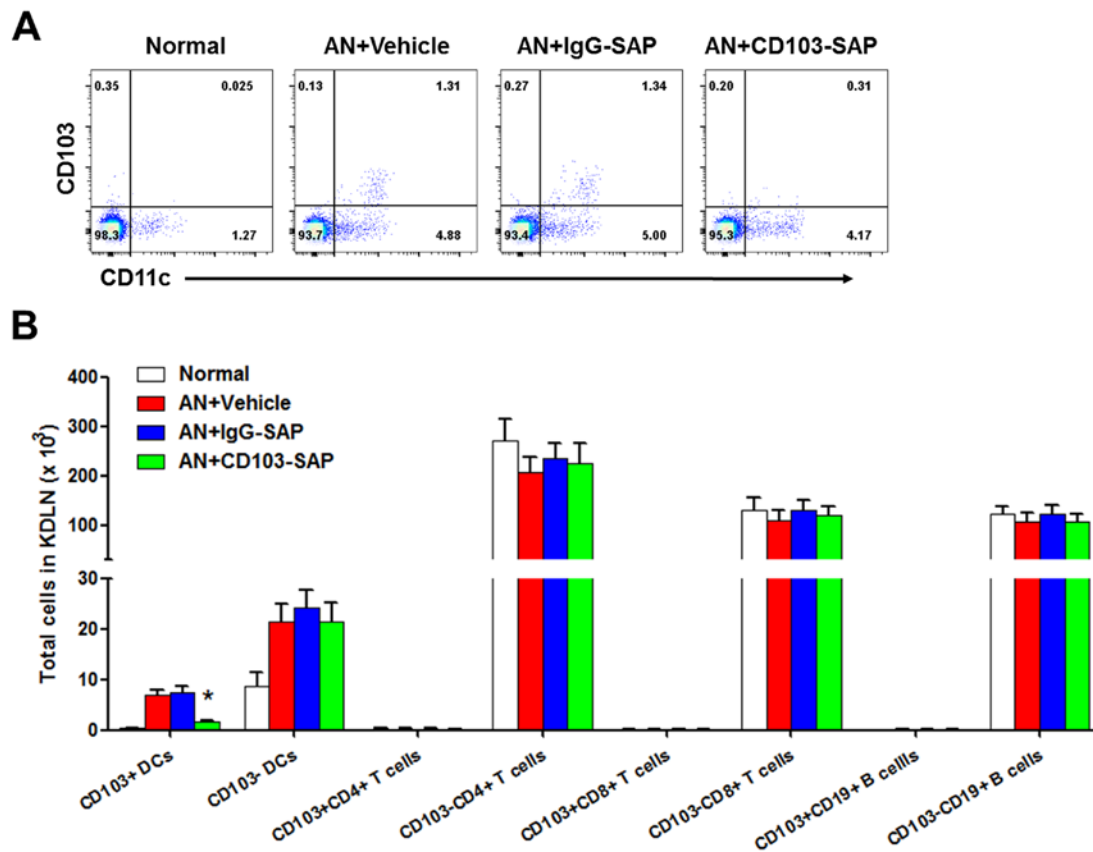


Figure S3. CD103-SAP antibody specifically depletes CD103⁺ DCs in KDLN of AN mice.

(A) Representative FACS analysis showing CD103⁺ DCs in KDLN of normal, AN+Vehicle, AN+IgG-SAP and AN+CD103-SAP mice at day 28 after ADR injection. (B) Total cell number of CD103⁺ DCs, CD103⁻ DCs, as well as CD103⁺ or CD103⁻ CD4 T cells, CD8 T cells, B cells in KDLN of normal, AN+Vehicle, AN+IgG-SAP and AN+CD103-SAP mice. The values represent the mean \pm SEM of evaluations from each group (n=7 per group). *P<0.05 vs. AN+Vehicle, AN+IgG-SAP.

Table S1. Real-time PCR primers

Gene	primer sequence(5'-3')	Product
Batf3 (F)	ccaaggacgatgacaggaaag	104
Batf3 (R)	ctcctcgtggagcttgcag	
IRF8 (F)	caaggaaccttctgtggatgag	177
IRF8 (R)	accatctgggagaaagctgaa	
Id2 (F)	caggcatctgaattcccttct	188
Id2 (R)	tccattcaacgtgttctcctg	
IRF4 (F)	acaggagctggaggattatg	129
IRF4 (R)	ctgtcacctggcaaccattt	
Flt3 (F)	gctgctgcttgttgtttgtc	132
Flt3 (R)	attcgggtacgatgatggcttt	
MCSF-R (F)	ggagacaccaagctggaaatc	109
MCSF-R (R)	atatgccagcgtcttggagt	
IFN- γ (F)	gcgtcattgaatcacacctg	103
IFN- γ (R)	acctgtgggttgttgacctc	
TNF- α (F)	gctgagctcaaaccctggta	118
TNF- α (R)	cggactccgcaaagtctaag	
HMGB1(F)	taaaaagccgagaggcaaaat	144
HMGB1(R)	gcagacatggtcttccacct	

Biglycan (F)	ctacgccctggtcttggtaa	163
Biglycan (R)	acggttgcatggattcgtag	
Uromodulin (F)	cctcagaaagtgccagctaca	168
Uromodulin (R)	tgggttcgtttcctcaa	
HAS1 (F)	ccaagtatacctcgcgctcc	165
HAS1 (R)	agaccaccgttcataggtca	
HAS2 (F)	gcgtggattatgtacaggtgtg	160
HAS2 (R)	ctgctgaggaaggagatcca	
HAS3 (F)	gagatgtccaaatcctcaacaag	136
HAS3 (R)	cccaaaggcccactaatacat	

F=forward, R=reverse.