

SUPPLEMENTAL TABLE 2: PATHOLOGIC FINDINGS

	Diagnosis	IF	P-IF	K/L	EM	ATI	Fibrosis score	% Fibrosis	% inflamn	Casts	Other inclusions
Crystalline LCPT											
1	SMM	1+	3+	κ	Rods, rhomboid	D	2	40	25		
2	SMM	Neg	3+	κ	Needle	P	1	10	10		
3	MM	neg	2+	κ	Rods, fibrils	D	0	0	0		
4	MM	Neg	2+	κ	Rods	D	0	<5	0		
5	MGRS	neg	2+	κ	Needles; striated	D	1	20	20		
6	MM	1+	3+	κ	Rods, fibrils	D	0	0	0		
7 ^A	MGRS	neg	2+	κ	ND	D	1	10	15		
8	MGRS	1+	2+	κ	Rhomboid	D	1	15	15		
9	SMM	3+	nd	κ	Needle	P	0	5	5		
10	SMM	neg	3+	κ	Rhomboid	D	0	<5	0		
11	SMM	neg	1-2+	κ	Rods, needles	D	1	15	0		
12 ^A	MM	neg	nd	κ	Rhomboid	D	0	0	0		
13	MGRS	neg	2+	κ	Rhomboid	D	0	0	0		
14	MGRS	trace	1+	κ	Needle, rhomboid	D	2	30	25		VEC, PEC, CSH
15	NHL	neg	1+	κ	Rods, fibrils	P	2	5	5		
16	MGRS	neg	3+	κ	Rhomboid; lattice	D	2	30	15		CSH
17	MGRS	neg	1+ (IP)	κ	Rods, fibrils	D	2	50	25		
18	MM	neg	3+	κ	ND	D	1	10	0		
19	CLL	1+	3+	κ	Rhomboid, fibrils	D	1	15	0		
20	MGRS after	nd	3+	κ	Rods	D	0	0	0		
21	MGRS	neg	3+	κ	Rhomboid	D	2	40	40		CSH
22	MGRS	1+	2+	κ	Rhomboid	D	3	80	10		
23	MGRS	neg	3+	κ	Rhomboid	D	3	60	25		
24	MGRS	neg	2+	κ	Rhomboid	D	2	50	25		
25	SMM	neg	neg	κ*	Rhomboid	D	1	15	10		
26 ^A	MM	neg	3+	κ	Rhomboid	D	1	10	5		VEC, CSH
27	MGRS	neg	2+	κ	Rhomboid	P	1	10	10		
28	MM	3+	nd	κ	Rhomboid	D	2	30	5	Focal	
29 ^A	MGRS	neg	2+	κ	Rhomboid; fibrils	D	2	40	35		
30	MGRS	Neg	3+	κ	Rhomboid	D	2	40	20		
31	MGRS	1+	3+	κ	Rhomboid	D	2	30	10		VEC
32	MGRS	neg	3+	κ	Rhomboid	D	0	0	0		
33 ^A	MGRS	neg	1-2+	κ	Rhomboid	D	2	30	10		
34	MGRS	neg	3+	κ	Rhomboid	D	3	65	50	Focal	
35 ^A	MM	3+	nd	κ	Ovoid, rhomboid	P	2	30	30	Focal	
36	MM	nd	3+	κ	Rhomboid	D	1	20	20	Focal	
37	MGRS	neg	2+	κ	Rhomboid	D	1	10	5	Focal	
38 ^A	MGRS	neg	3+	κ	Rhomboid	D	1	15	30	Focal	
39	MM	neg	1+ (IP)	κ	Rhomboid	D	1	10	10	Focal	
40	NHL	3+	nd	κ	Rhomboid	D	1	15	5	Focal	
Non-crystalline LCPT											
41	MM	nd	2+	κ	Droplets	A	1	15	15		
42	MM	1+	3+	κ	Vacuolar	D	0	10	0	Focal	
43	MM	1+	nd	λ	Vacuolar	D	2	30	5		
44	SMM	2-3+	nd	κ	Droplets	A	2	40	5		
45 ^A	MM	1+	nd	λ	Droplets	A	1	15	5		
46	MM	2+	2+	κ	Droplets	A	0	0	0		

ATI, acute tubular injury; A, absent; D, diffuse; P, patchy. Fibrosis score: 0 = absent, 1 =mild, 2 =moderate, 3 =severe
 IF, immunofluorescence on frozen; IF-P, immunofluorescence after pronase digestion; IP, immunoperoxidase; K/L, kappa or lambda light chain
 EM, electron microscopy inclusions
 VEC, visceral epithelial cell; PEC, parietal epithelial cell; CSH, crystal storing histiocytes
 ND, not done
^A second opinion case; *, monoclonal kappa light chain in urine

SUPPLEMENTAL TABLE 1: CLINICAL FEATURES

	Diagnosis	Age (years)	HTN	DM	sCr mg/dL	eGFR	Proteinuria g/day	Serum LC	Urine LC	Serum FLC	Fanconi syndrome
Case #	Crystalline LCPT										
1	SMM	47	y	n	2	39	3.3	Neg	κ	216	G, P, U, A, AA
2	SMM	57	y	n	2.5	21	2.5	κ	κ		G, U, A
3	MM	47	n	n	1.1	60	1.92	IgG κ	unknown		No
4	MM	59	n	n	1.6	46	1.412	IgG κ + IgG λ	κ and λ		No
5	MGRS	76	y	n	3.3	17	2	IgG κ	IgG κ		G
6	MM	39	n	n	2.3	34	1	IgG κ	unknown	1700	G
7 [^]	MGRS	43	n	n	1.8	45	7	IgG κ	unknown		G, AA, A
8	MGRS	68	Y	Y	1.9	35	6.7	IgA κ + IgG κ	unknown		No
9	SMM	51	Y	n	1	65	1.49	Neg	κ		G, Bone, A, P
10	SMM	59	y	n	1.6	46	0.7	IgG κ	κ		No
11	SMM	60	y	n	1.8	40	1.86	Neg	κ		No
12 [^]	MM	42	n	n	0.7	92	2	κ	unknown		No
13	MGRS	58	n	n	1.5	51	3.5	κ + λ	κ + λ		No
14	MGRS	49	n	n	1.4	59	7.25	IgG κ	IgG κ + κ		No
15	NHL	55	n	n	3.7	13	1.5	Neg	κ	0.9	G
16	MGRS	81	Y	n	4.4	12	0.75	IgG κ	IgG κ		No
17	MGRS	75	Y	n	2.5	24	2.9	IgA κ; IgG κ	unknown	47.6	No
18	MM	75	n	n	2.5	24	3	κ (1.6g)	κ (0.624g)		No
19	CLL	60	Y	n	2	35	2.8	Neg	κ		G, P, U
20	MGRS after 36	72	n	n	1.5	35	4	Neg	Neg		No
21	MGRS	85	n	n	6	6	4	Neg	κ		No
22	MGRS	52	n	n	4.4	14	1	Neg	κ		G
23	MGRS	47	n	n	2.2	34	2.6	IgG κ	IgG κ	8.2	G, A, Bone
24	MGRS	65	n	n	2.7	24	2	κ	κ		No
25	SMM	61	Y	n	1.73	48	2.8	Neg	κ		G, P, U
26 [^]	MM	42	n	n	1.1	62	1	IgG κ (1.6g)	IgG κ + κ	350	No
27	MGRS	51	Y	n	1.5	53	2.3	Neg	κ		No
28	MM	56	Y	Y	2.86	24	0.123	IgG κ + κ	κ		No
29 [^]	MGRS	44	n	n	3.3	22	2.39	IgG κ	κ		G, A
30	MGRS	81	n	n	2.7	16	5.5	IgG κ	unknown		No
31	MGRS	81	Y	n	2.5	18	2.9	κ	κ	18.5	G
32	MGRS	53	n	n	2	37	0.9	κ	unknown		G
33 [^]	MGRS	71	n	n	1.5	46	3.3	Neg	κ (0.825g)	33.7	G, P, A
34	MGRS	74	Y	n	2.9	15	1.76	IgG κ	unknown		No
35 [^]	MM	82	Y	n	4.9	8	3.5	unknown	unknown		Bone
36	MM	77	Y	n	2.1	29	3.5	IgG κ	κ		U
37	MGRS	58	Y	n	1.3	60	1.28	κ	κ		No
38 [^]	MGRS	87	n	n	4	13	0	Neg	κ		No
39	MM	45	n	n	3.3	21	16	κ	κ	25	No
40	NHL	70	n	n	1.1	51	2.53	IgA κ + κ	IgA κ + κ		No
	Non-crystalline LCPT										
41	MM	87	Y	n	0.6	95	7	IgA κ	κ		No
42	MM	61	Y	n	1.29	45	4.3	IgG κ	unknown		No
43	MM	67	Y	n	9	5	10	IgG λ	Neg		No
44	SMM	87	Y	n	2.3	25	0.15	IgG κ	unknown	24	unknown
45 [^]	MM	70	Y	n	0.7	88	7.4 (1+)	IgG λ + λ	unknown	<0.01	No
46	MM	75	n	n	0.6	97	4.1	κ	κ		No

HTN, hypertension; DM; diabetes mellitus

K, kappa; L, lambda; LC, light chains; FLC, serum free light chain ratio (kappa/lambda); LCPT, light chain proximal tubulopathy

CLL, chronic lymphocytic leukemia; MGRS, monoclonal gammopathy of renal significance;

MM, multiple myeloma; NHL, non-Hodgkin lymphoma; SMM, smoldering myeloma

eGFR, estimated glomerular filtration rate in cc/min/1.73 m²

Fanconi, Fanconi syndrome; Bone, bone pain; G, glycosuria; AA, aminoaciduria; A, metabolic acidosis; P, hypophosphatemia; U, hypouricacidemia

Proteinuria, (dipstick)

[^] second opinion case

SUPPLEMENTAL TABLE 3: FOLLOW-UP

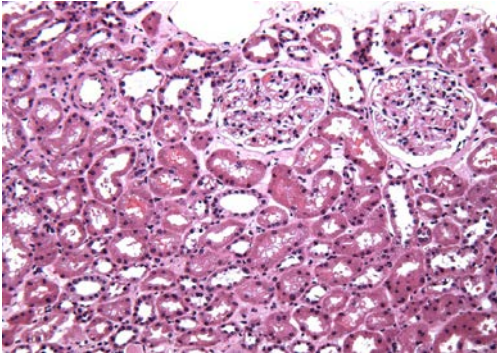
Case #	Diagnosis	Treatment		Outcomes											
		SCT	Chemo	Follow-up (months)	Last Cr	Δ SCR	Last eGFR	Last Uvp	Last serum	Last Urine M	Last FLC	Hematologic outcome	Renal outcome	Died (mos)	
Crystalline LCPT															
1	SMM	no	D;T;B,D	133	2.14	0.14	33	1.68	Neg	κ		95.7	SD	CKD, FS	
2	SMM	no	None	22	1.7	-0.8	38	1+	κ	κ			SD	CKD	48
3	MM	no	None	141	1.47	0.37	38	1.4	Neg	κ		16.8	SD (MM at 71 mos)	CKD	
4	MM	Yes	L,D;CDEP	132	1.58	-0.02	45	1.4	IgG λ	unk		5.6	SD (MM at 54 mos)	CKD	
6	MM	Yes	B,T,D;P,D R;P,C,ET; B;L,D; Pom	107	1.55	-0.75	50	0.84	IgG κ	κ		316	SD	CKD	
8	MGRS	no	None	70	10	9.1	HD		IgA κ	κ			SD	ESRD	
9	SMM	Yes	D;CDEP;L +D	109	1.35	0.35	41	1.7	Neg	Neg		0.69	CR	CKD, proteinuria, FS	
10	SMM	no	None	98	1.44	-0.16	50	1.87	unk	κ 1.17 g/day		125	SD	CKD, proteinuria	
11	SMM	no	None	95	2.22	0.42	30	1.96	unk	κ 0.9 g/day		118	SD	CKD	
12^	MM	Yes	B,T,L	96	0.5	-0.2	135	neg	κ	unk			PR	NI	
15	NHL	no	CHOP, RTX	76	1	-2.7	58	neg	Neg	Neg			CR	CKD	
16	MGRS	no	None	18	HD	NA	HD		IgG κ	IgG κ			SD	ESRD	18
18	MM	no	L,P	28	2.2	-0.3	28	0.624	Neg	κ			SD	CKD	30
19	CLL	no	D,C,F	7	1.27	-0.63	61	0.7					SD	CKD	31
20	MGRS afte	no	B,D	39	1.6	0.1	32		Neg	Neg		23	CR	CKD	
21	MGRS	no	D	19	2	-4	24	1.5	Neg	κ			SD	CKD, proteinuria	19
22	MGRS	Yes	M	57	2.84	-1.56	24	0.3	Neg	κ 0.91 g/day			SD	CKD	
23	MGRS	no	B,D	39	3.1	0.9	22	2.6	1.1 g	unk		15.8	SD	CKD, proteinuria, FS	
24	MGRS	no	B	36	5	2.3	11						SD	CKD	
25	SMM	no	none	27	1.8	0.07	47	2.6	Neg	κ		20	SD	CKD, FS	
26^	MM	Yes	B,D; L	15	0.9	-0.2	69	0.72	IgG κ	κ 0.72 g/day		21	SD	NI	
27	MGRS	Yes	L,B,D;M	14	1.55	0.05	48	0.8	Neg	κ 0.049 g/day		1.16	VGPR	CKD	
28	MM	Yes	V,C,D;M;L	15	1.59	-1.27	45	0.1	unk	unk			PR	CKD	
31	MGRS	no	T;B	69	3.42	1.92	18	0.9	IgG λ/IgG κ	neg		2.3	SD	CKD	
33^	MGRS	no	C,B,D	5	2.39	0.89	27	1.82	Neg	κ		47.6	SD	CKD, proteinuria	
35^	MM	no	T,D; B,D,M,Pr	9	2.2	0.1	29	3	IgG κ	unk		481	SD	CKD, proteinuria	13
36	MM	Yes	L,D	58	1.3	0	57	0.43	Neg	Neg			CR	CKD, proteinuria	
37	MGRS	no	None	1	unk	unk	unk		Neg	κ			SD	unk	1
38^	MGRS	Yes	T	49	1.09	-2.21	73	0.08	Neg	κ		4.5	PR	NI	
39	MM	no	RTX	26	1.4	0.3	37	0.3	Neg	Neg			CR	CKD	
Non-crystalline LCPT															
41	MM	no	T, Z	14	1.6	1	28	0.03	κ	unk			SD	CKD	14
42	MM	no	"Chemo"	5	1.1	-0.18	54	1.35	IgG κ	κ			SD	CKD, proteinuria	
43	MM	Yes	"Chemo"	24	HD	NA	HD		Neg	Neg			PR	ESRD	24
44	SMM	no	B	17	2.4	0.1	26	0.66	IgG κ	unk		20	SD	CKD	
45^	MM	no	L,B,D	15	0.8	0.1	75		Neg	Neg		1.02	CR	NI	
46	MM	no	no	10	0.6	0	97	2+	κ	κ			SD	NI, proteinuria	

CR, complete remission; VGPR, very good partial remission; PR, partial remission; SD, stable disease
 HD, hemodialysis; ESRD, end-stage renal disease; CKD, chronic kidney disease; NI, normal kidney function
 B, bortezomib; C, cyclophosphamide; CDEP, cyclophosphamide + dexamethasone + etoposide + cisplatin; "Chemo", unspecified chemotherapy
 CHOP: cyclophosphamide + doxorubicin + vincristine + prednisone; D, dexamethasone; DR, doxorubicin; Ev, everolimus; F, fludarabine; L, lenalidomide
 M, melphalan; MGRS, monoclonal gammopathy of renal significance; MM, multiple myeloma; NA, not applicable
 P, cisplatin; Pom, pomalidomide, Pr, prednisone; RTX, rituximab; SMM, smoldering multiple myeloma; T, thalidomide; unk, unknown; Z, zoledronate
 ^, second opinion case

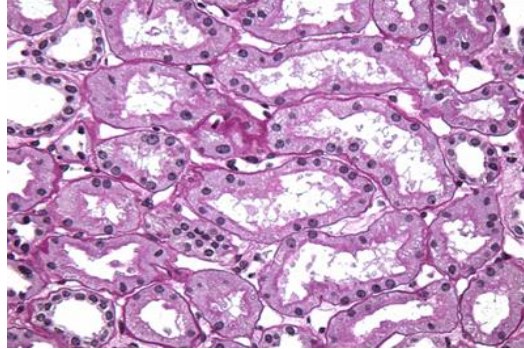
Univariate and Multivariable Correlates of initial and final eGFR										
All LCPT cases										
	Univariate			Multivariable						
		r	p-value	r=0.582, P=0.001	Beta	p-value				
initial	age	-0.323	0.029	age	-0.119	0.39				
eGFR	serum albumin	0.309	0.056							
vs	IFTA	-0.576	<0.001	IFTA	-0.546	<0.001				
	% Fibrosis	-0.516	<0.001							
	% Inflammation	-0.459	0.001							
				r = 0.815						
final	age	-0.473	0.005	age	-0.247	0.079				
eGFR	IFTA	-0.485	0.004	IFTA	0.066	0.84				
vs	% Fibrosis	-0.527	0.001	% Fibrosis	-0.215	0.52				
	% Inflammation	-0.476	0.004	% Inflammation	0.029	0.86				
	final Uvprotein	-0.451	0.016	final Uvprotein	-0.285	0.11				
	initial eGFR	0.719	<0.001	initial eGFR	0.513	0.006				
				or						
				without initial eGFR in the model						
				r=0.718, p=0.005						
				age	-0.338	0.038				
				IFTA	-0.272	0.46				
				% Fibrosis	-0.148	0.71				
				% Inflammation	-0.02	0.92				
				final Uvprotein	-0.266	0.14				
Crystalline LCPT cases										
	Univariate			Multivariable						
		r	p-value	r=0.746, P<0.001	Beta	p-value	or	r=0.691, P	Beta	p-value
initial	age	-0.577	<0.001	age	-0.342	0.02	age	-0.408	0.005	
eGFR	serum albumin	0.395	0.021	serum albumin	0.386	0.038				
vs	IFTA	-0.565	<0.001	IFTA	-0.115	0.75	IFTA	-0.455	0.002	
	% Fibrosis	-0.504	0.001	% Fibrosis	-0.511	0.21				
	% Inflammation	-0.516	0.001	% Inflammation	0.234	0.27				
				r = 0.842						
final	age	-0.473	0.005	age	-0.382	0.018				
eGFR	IFTA	-0.485	0.004	IFTA	0.036	0.92				
vs	% Fibrosis	-0.527	0.001	% Fibrosis	-0.167	0.65				
	% Inflammation	-0.476	0.004	% Inflammation	0.079	0.65				
	final Uvprotein	-0.451	0.016	final Uvprotein	-0.406	0.042				
	initial eGFR	0.719	<0.001	initial eGFR	0.33	0.072				

Supplemental Figure 5: Non-crystalline LCPT with possible physiologic light chain trafficking.

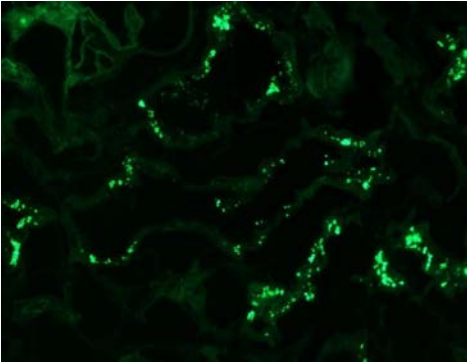
5A



5B



5C



Supplemental Figure 5 legend:

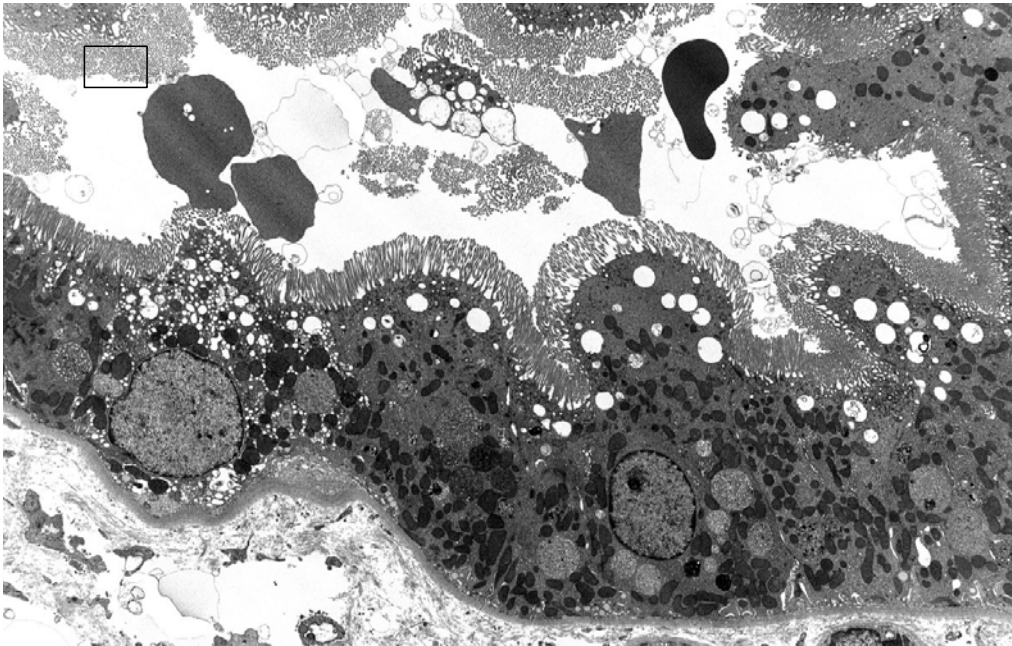
5A. Low power view shows normal appearing proximal tubules with no evidence of acute tubular injury (H&E, x200).

5B. Higher power view reveals intact PAS-positive apical brush border. No intracytoplasmic crystalline inclusions or vacuoles are seen by light microscopy (PAS, x400X).

5C. Immunofluorescence performed on frozen tissue sections reveals droplets that stain intensely for kappa light chain within the cytoplasm of proximal tubular cells (FITC-conjugated antisera to kappa light chain, x400). The staining for lambda light chain was negative (not shown).

Supplemental Figure 5: Non-crystalline LCPT with possible physiologic light chain trafficking.

5D



Supplemental Figure 5 legend (continued):

5D. Electron microscopy of a representative proximal tubule reveals increased number of endosomes (clear membrane bound vesicles) in the apical region. Microvillous brush border is intact. There are scattered rounded phagolysosomes containing non-specific amorphous material in the deeper cytoplasm; however, no crystalline inclusions are identified.