

Supplementary Information

Anti-inflammatory role of miR-146a in the pathogenesis of Diabetic Nephropathy

Kirti Bhatt¹, Linda L Lanting¹, Ye Jia¹, Sailee Yadav¹, Marpadga A Reddy¹, Nathaniel Magilnick^{2,3}, Mark Boldin² and Rama Natarajan¹

¹Department of Diabetes Complications, ²Department of Molecular and Cellular Biology and ³Irell and Manella graduate school of biological sciences, Beckman Research Institute, City of Hope National Medical Center, Duarte, CA,

Corresponding author:

Rama Natarajan, Ph. D., FASN.

Professor, Department of Diabetes Complications

Beckman Research Institute of City of Hope

1500 East Duarte Road, Duarte, CA 91010;

Ph: 626-256-4673, ext 62289

Fax: 626-301-8136;

Email: RNatarajan@coh.org

Supplementary Figure Legends

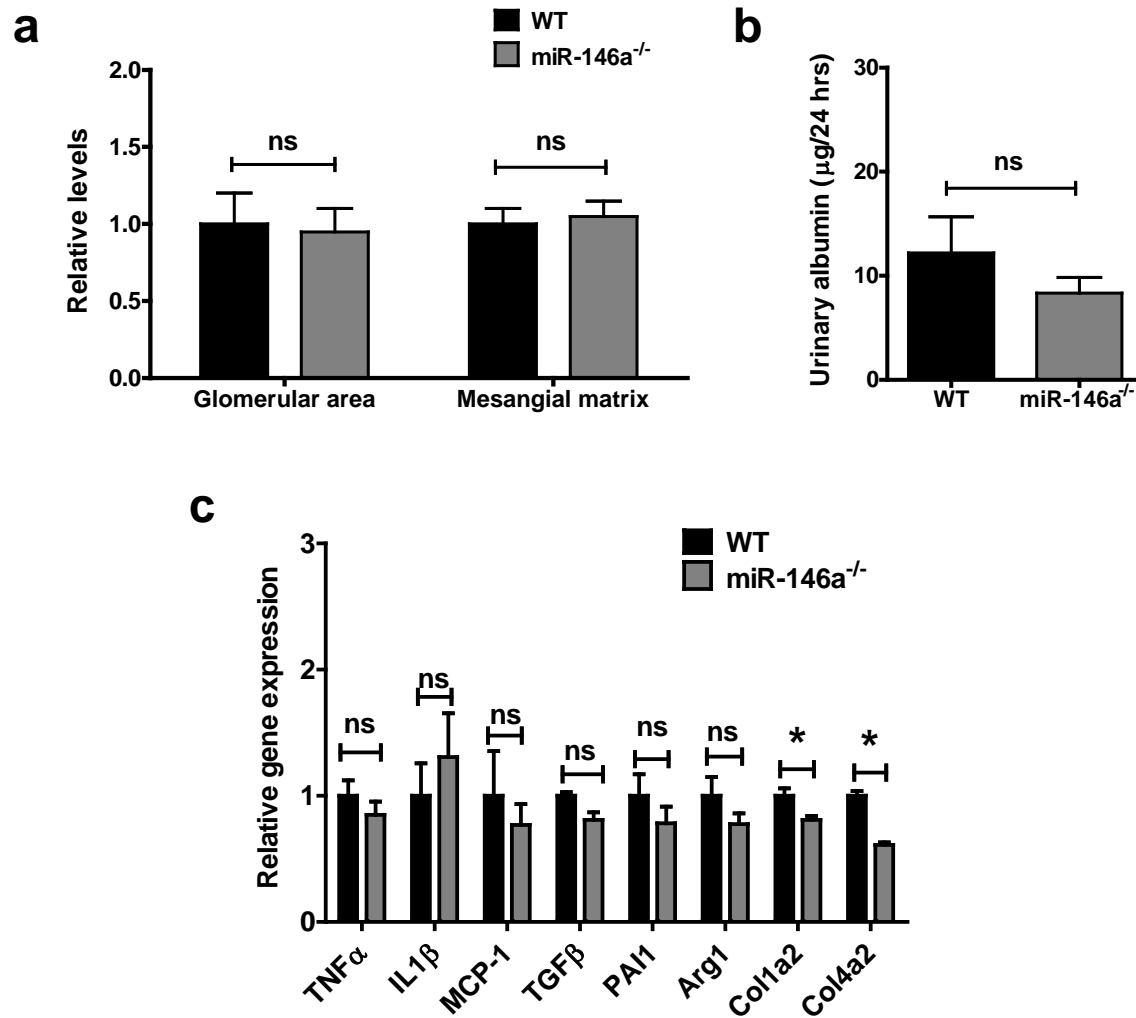
Supplementary Figure 1: Characterization of renal function and gene expression in the non-diabetic miR-146a^{-/-} mice. Non-diabetic 24 week old mice were used for phenotypic characterization (n=6) **(a)** Glomerular area and mesangial matrix expansion in WT and miR-146a^{-/-} mice kidneys **(b)** Urinary albumin levels **(c)** Inflammatory and fibrotic gene expression in WT and miR-146a^{-/-} mice kidneys. In all figures, data is presented as mean \pm SEM. * represents statistically significant difference as compared to WT group; p values < 0.05.

Supplementary Figure 2: Baseline Macrophage gene expression in the non-diabetic miR-146a^{-/-} mice. Inflammatory and M1/M2 gene expression in WT and miR-146a^{-/-} mice (non-diabetic) peritoneal macrophages (n=6). Data is presented as mean \pm SEM. data is presented as mean \pm SEM. * represents statistically significant difference as compared to WT group; p values < 0.05.

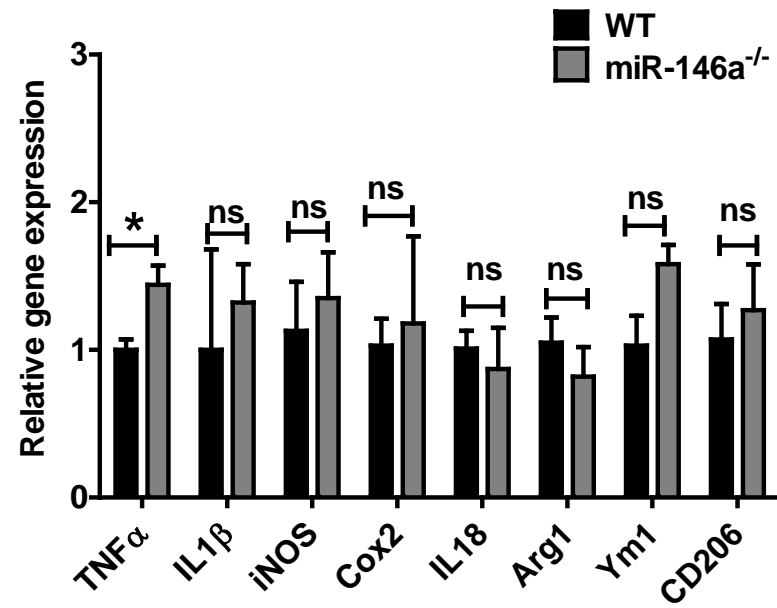
Supplementary Figure 3: Effect of miR-146a overexpression in macrophages. miR-146a mimic and scrambled control oligonucleotides were transfected (40 pmol) in peritoneal macrophages isolated from WT mice followed by TNF α (10ng/ml) treatment for 3 hours (n=5). Gene expression analysis was carried out for miR-146a target genes and other inflammatory markers. Data is presented as mean \pm SEM. * represents statistically significant difference as compared to Scrambled-control group, # represents statistically different as compared to

Scrambled-TNF α group and \$ indicates statistically significant as compared to miR-146a-mimic-control group; p values < 0.05.

Supplementary Figure 1



Supplementary Figure 2



Supplementary Figure 3

