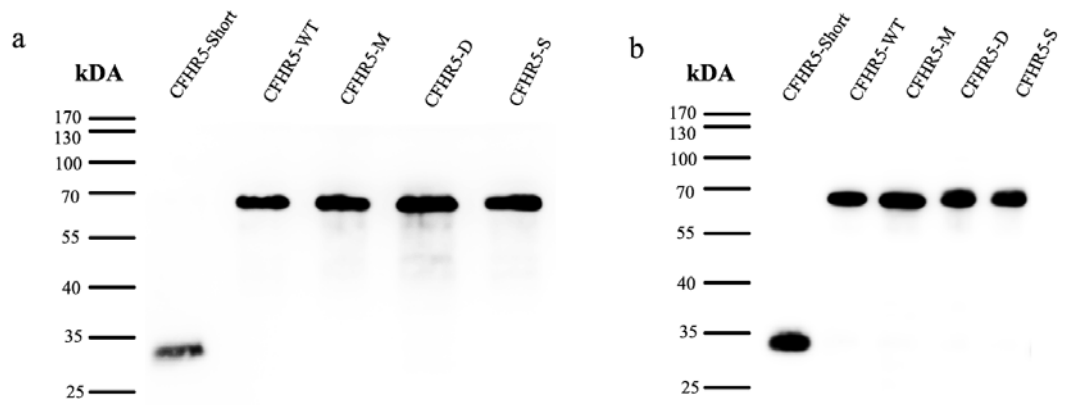


Supplemental Figure Legends

Supplemental Figure 1. Quality control of recombinant CFHR5 proteins by Western Blot. Recombinant CFHR5 proteins were separated by SDS-PAGE and transferred to a membrane, the recombinant protein can be detected by anti-6X His tag antibody (a) and polyclonal anti-CFHR5 antibody (b) to form a band at about 63 kDa (CFHR5-WT, CFHR5-M, CFHR5-D, CFHR5-S) and 28 kDa (CFHR5-Short).

Supplemental Figure 2. C3b binding capacity assay of different allotypes of CFHR5 proteins with respect to different C3b concentration. The linearity range for C3b binding capacity of 1 μ g/mL CFHR5 was 1-4 μ g/mL. Among this range, CFHR5-M (c.508G>A/p.Val170Met), CFHR5-S (c.533A>G/p.Asn178Ser) and CFHR5-D (c.822A>T/p.Glu274Asp) showed consistent higher binding capacity to C3b, while CFHR5-Short (c.776T>A/p.Leu259Ter) had lower C3b binding capacity, compared to CFHR5-WT protein.

Supplemental Figure 1.



Supplemental Figure 2.

