

Supplementary Materials Table of Contents

Table S1. Demographics and Clinical Characteristics Stratified by Cohort

Figure S1. Percent Change in eGFR in the (A) TEMPO (n=479) and (B) CRISP (n=180) Stratified by SuPAR Tertiles

Error bars represent +/- 1 standard error

Figure S2. Percent Change in htTKV in both Cohorts Stratified by SuPAR Tertiles

Error bars represent +/- 1 standard error

Table S1. Demographics and Clinical Characteristics Stratified by Cohort

Variables	TEMPO (n=479)	CRISP (n=180)	P-value
Age, years	39 (7)	32 (9)	<0.001
Male, n (%)	247 (52%)	75 (42%)	0.024
Caucasian race, n (%)	403 (84%)	162 (90%)	<0.001
Body mass index, kg/m ²	26 (5)	26 (6)	0.63
Hypertension, n (%)	385 (80%)	112 (62%)	<0.001
ACEi or ARB use, n (%)	335 (70%)	92 (51%)	<0.001
Estimated glomerular filtration rate, ml/min/1.73 m ²	80 (22)	94 (23)	<0.001
Total kidney volume, ml	1478 [1073;1986]	883 [614; 1336]	<0.001
Height-adjusted total kidney volume, ml/m	853 [623;1151]	512 [364;757]	<0.001
Genotype ^a			<0.001
PKD1	234 (85%)	144 (80%)	
PKD2	40 (15%)	21 (12%)	
No mutation detected	0 (0%)	14 (8%)	
ProPKD score ^a	6 (2)	-	
Irazabal Classification			<0.001
1A	0 (0%)	9 (5%)	
1B	31 (7%)	41 (23%)	
1C	187 (40%)	60 (34%)	
1D	160 (33%)	38 (21%)	
1E	82 (17%)	28 (16%)	
2A	17 (4%)	2 (1%)	
SuPAR, ng/ml	2.54 [2.13;3.22]	2.18 [1.73;2.81]	<0.001

Values are mean (SD), n (%) or median [25th;75th percentile] as noted. P-value is for the comparison between the TEMPO and CRISP cohorts. ACEi: angiotensin-converting enzyme inhibitor; ARB: angiotensin receptor blocker; SuPAR: soluble urokinase plasminogen activator receptor. ^aGenotype and ProPKD score were only available in 274 (57%) of TEMPO 3:4 participants.

Figure S1.

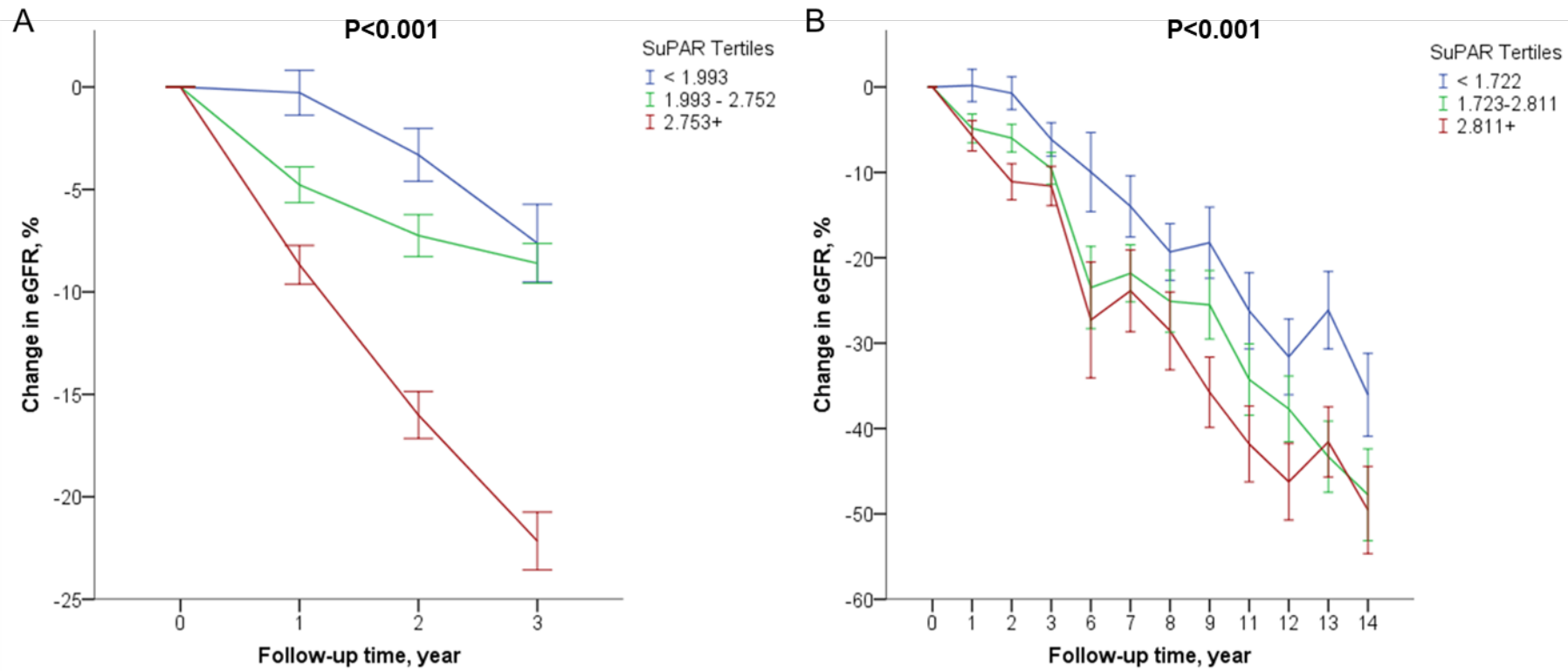


Figure S2. Percent Change in htTKV in both Cohorts Stratified by SuPAR Tertiles

