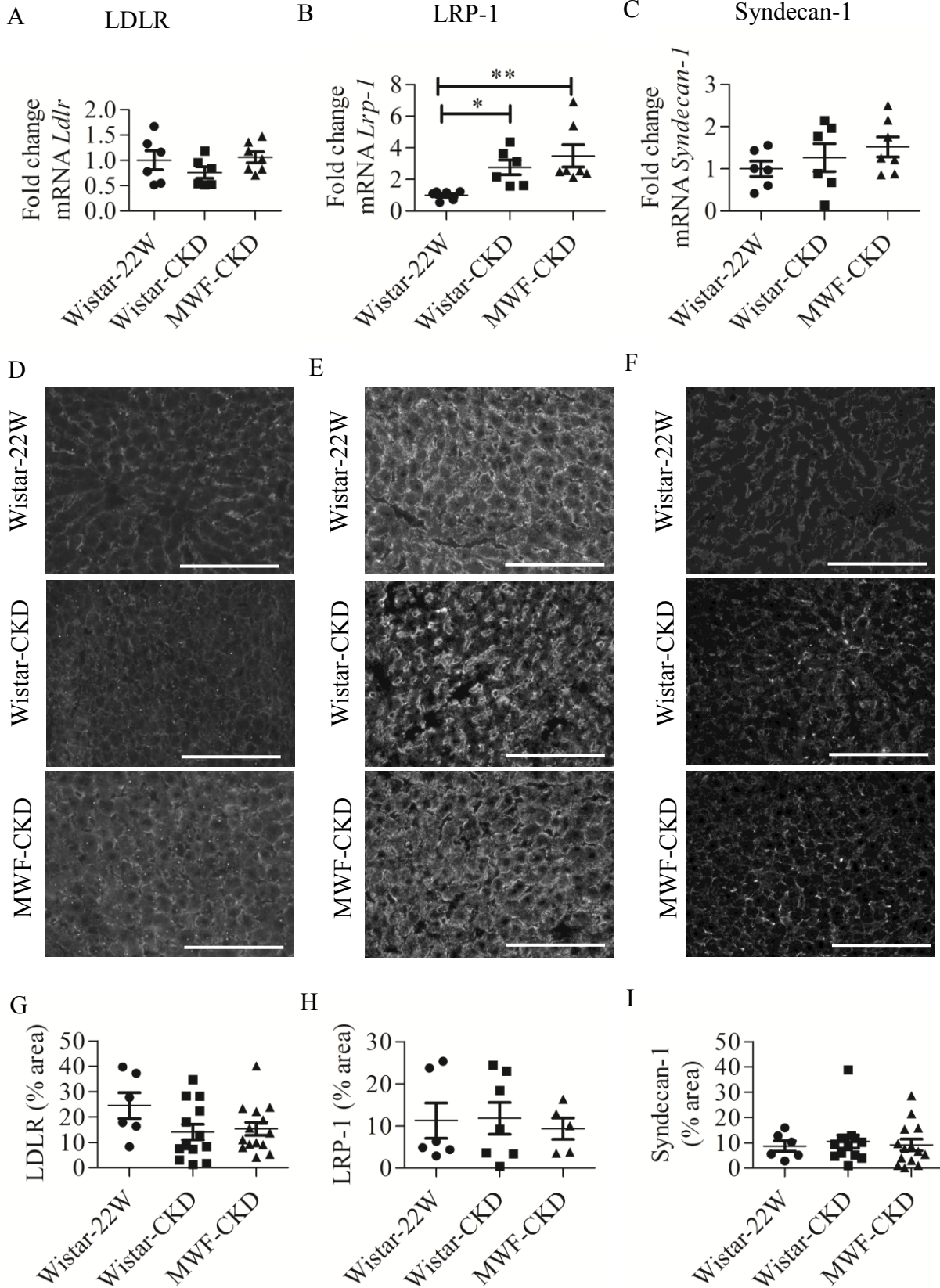
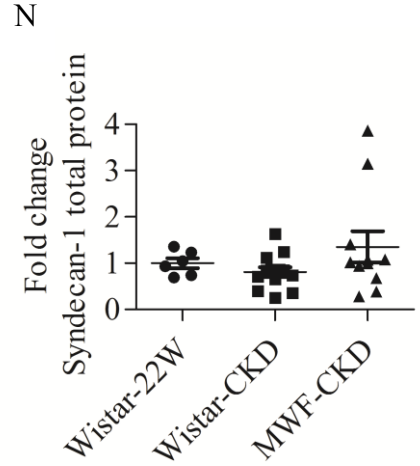
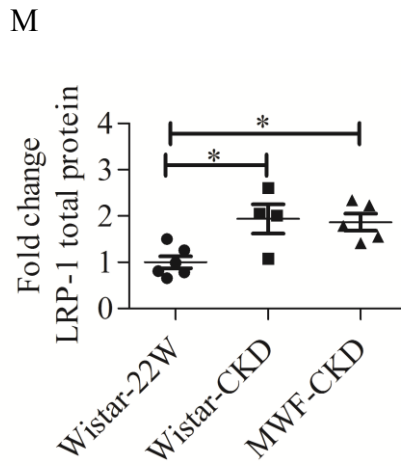
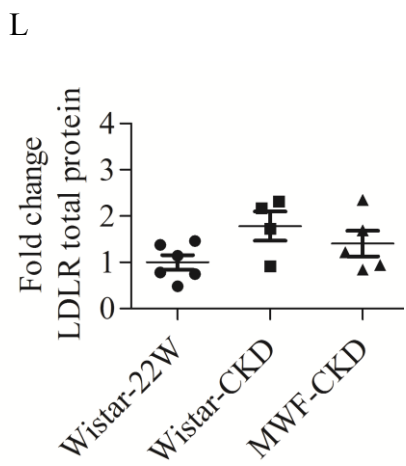
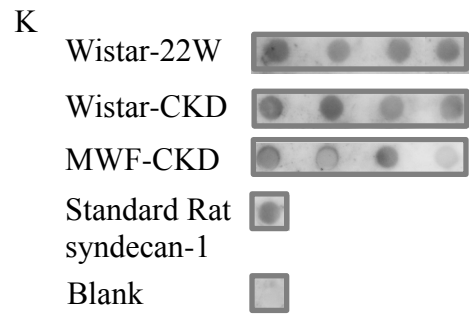
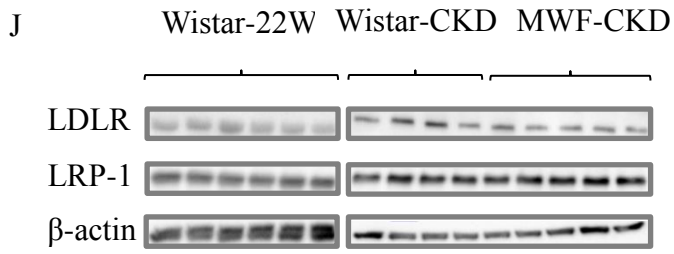


Supplementary Figure 1





Supplementary figure legend:

Supplementary Figure 1: Expression of hepatic lipoprotein receptors: LDLR, LRP-1 and syndecan-1 in Wistar-22W, Wistar-CKD and MWF-CKD rats. (A,B,C): Fold change in mRNA expression of hepatic *Ldlr*, *Lrp-1* and *Syndecan-1* relative to *Gapdh*. (D,E,F) Immunofluorescence staining of hepatic LDLR, LRP-1 and syndecan-1. (G,H,I) Quantification of immunofluorescence stainings representing surface expression of hepatic LDLR, LRP-1 and syndecan-1. (J) Representative examples of LDLR, LRP-1 and β -actin by Western blot (K) and syndecan-1 by dot blot. (L,M,N). Quantification of western blots and dot blots. The results are presented as mean \pm SEM. *: $p < 0.05$; **: $p < 0.01$. Scale bars in photomicrographs represent 150 μ m.

Supplementary Table 1: Primer sequences used for qRT-PCR.

Genes	Forward 5'-3'	Reverse 3'-5'
<i>Gapdh</i>	CATCAAGAAGGTGGTGAAGC	ACCACCCTGTTGCTGTAG
<i>Ext-1</i>	GGAGAAAGCAAGGTTATGAG	CCTTTGAGTTATCCCAGAAATG
<i>Lrp-1</i>	GTGTCTACTGGACTAACTGG	GAAATATTGAGGTGGGTGAC
<i>Pcsk9</i>	CAGACAGAGGAAGATAGCTC	GTTGAAGTCAGTGATGGTAAC
<i>Syndecan-1</i>	Qiagen on demand	Qiagen on demand
<i>Ldlr</i>	Qiagen on demand	Qiagen on demand