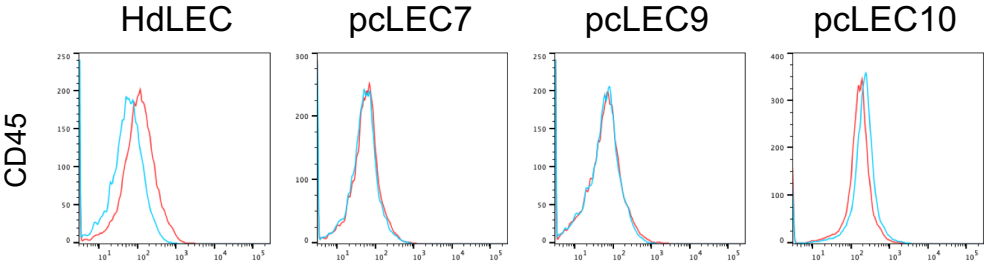


Shakoor SDC Figure 1



SDC Figure 1. pcLECs are not immune cells. CD45 FACS of HDLECs and 3 pcLECs. blue: specific antibodies, red: IgG control

SDC, Table 1. Summary of RT-PCR gene specific primers.

Gene	Forward Primer	Reverse Primer
<i>β-actin</i>	5' CGAGGCCAGAGCAAGAGAG 3'	5' CTCGTAGATGGGCACAGTGTG 3'
<i>TIE2</i>	5'GAAGATGCAGTGATTTACAAAATG3'	5'AGCCTGTGGCACAGGAACAC 3'
<i>PROX1</i>	5' ACGTAAAGTTCAACAGATGCATTAC 3'	5' CCAGCTTGCAGATGACCTTG 3'
<i>PODOPLANIN</i>	5' CCCAGGAGAGCAACAACTCAAC 3'	5' CTCGATGCGAATGCCTGTTAC 3'
<i>LYVE1</i>	5' TAGCTTTGAAACTTGCAGCTATG 3'	5' TCAACAAATGGTTCAGTTTCTGTAG 3'
<i>VEGFC</i>	5' GCCACGGGAGGTGTGTATAGA TG 3'	5' TGTTGCTGCCTGACACTGTG 3'

SDC Table 2. Summary of Antibodies

Antigen	FACS	Immunofluorescence
VECADHERIN	RnD Systems (FAB9381P)	RnD Systems (AF938)
CD31	Ancell (180-040)	DAKO (M082)
CD45	RnD Systems (FAB1430P)	
CD90	BD Biosciences (555595)	
CD146	ThermoFisher (11-1469-42)	
PODOPLANIN	EBioscience (17-9381-42)	RnD Systems (AF3670)
PROX1		RnD Systems (AF2727)
VEGFR2	RnD Systems (FAB357P)	RnD Systems (AF357)
VEGFR3	RnD Systems (FAB3492P)	RnD Systems (AF349)