

Supplemental Material

Table of Contents

Supplementary Table 1.

Distribution of randomized patients by 33 study sites ($N=130$).

Supplementary Table 2.

Change in log-transformed UACR from baseline to Week 12 with analyses using an ANCOVA (LOCF), ANCOVA (OC), and MMRM.

Supplementary Figure 1.

Results of a subgroup analysis according to the baseline characteristics: The relative ratio (95% CI) of adjusted geometric means of Week 12 to baseline ratio in UACR between TMX-049 200 mg/40 mg group and placebo group for subgroups.

Supplementary Figure 2.

Mean change (\pm standard deviation) in the supine systolic blood pressure from baseline to each study visit.

Supplementary Figure 3.

Scatter plot of changes in the UACR versus changes in the supine systolic blood pressure from baseline to Week 12.

Supplementary Table 1. Distribution of randomized patients by 33 study sites (N=130).

Site No.	TMX-049 200 mg (n=44)	TMX-049 40 mg (n=44)	Placebo (n=42)
002	0	0	1
003	2	1	0
004	1	0	0
005	2	1	0
006	1	1	0
007	1	1	2
008	0	2	0
009	1	1	1
010	2	4	1
011	0	2	0
013	0	2	2
014	3	0	3
015	0	2	1
016	6	7	7
018	4	2	0
019	0	0	1
020	0	1	0
021	0	0	1
024	0	1	1
026	8	5	7
027	0	0	1
028	1	0	1
029	0	2	1
031	2	2	1
032	3	2	2
033	0	0	2
034	1	1	2
039	1	2	1
040	0	0	1
045	1	2	1
046	2	0	1
047	1	0	0
049	1	0	0

Supplementary Table 2. Change in log-transformed UACR from baseline to Week 12 with analyses using an ANCOVA (LOCF), ANCOVA (OC), and MMRM.

Data are presented for the modified intention-to-treat population (N=129): TMX-049 200 mg (n=44), TMX-049 40 mg (n=43), and placebo (n=42).

		Log-transformed UACR (mg/g), Mean±standard error (n)		Change in log-transformed UACR (mg/g) from baseline to Week 12, LS mean (95% CI)	vs Placebo	
		Baseline	Week 12		The relative ratio of adjusted geometric means of Week 12 to baseline ratio, LS mean (95% CI)	P value
ANCOVA ^{a)} (LOCF)	TMX-049 200 mg QD	6.25±0.14 (44)	5.75±0.21 (44)	-0.53 (-0.83, -0.23)	0.65 (0.44, 0.96)	0.0311
	TMX-049 40 mg QD	6.02±0.19 (43)	5.91±0.17 (43)	-0.15 (-0.45, 0.15)	0.95 (0.64, 1.41)	0.7953
	Placebo	6.28±0.15 (42)	6.20±0.18 (42)	-0.10 (-0.40, 0.21)		
ANCOVA ^{a)} (OC)	TMX-049 200 mg QD	6.22±0.14 (43)	5.71±0.20 (43)	-0.54 (-0.84, -0.23)	0.64 (0.43, 0.95)	0.0285
	TMX-049 40 mg QD	5.99±0.19 (42)	5.89±0.18 (42)	-0.14 (-0.44, 0.17)	0.95 (0.64, 1.43)	0.8155
	Placebo	6.26±0.15 (40)	6.19±0.19 (40)	-0.09 (-0.40, 0.22)		
MMRM ^{b)}	TMX-049 200 mg QD	6.25±0.14 (44)	5.71±0.20 (43)	-0.52 (-0.81, -0.23)	0.65 (0.44, 0.97)	0.0341
	TMX-049 40 mg QD	6.02±0.19 (43)	5.89±0.18 (42)	-0.13 (-0.43, 0.16)	0.96 (0.64, 1.43)	0.8364
	Placebo	6.28±0.15 (42)	6.19±0.19 (40)	-0.09 (-0.39, 0.21)		

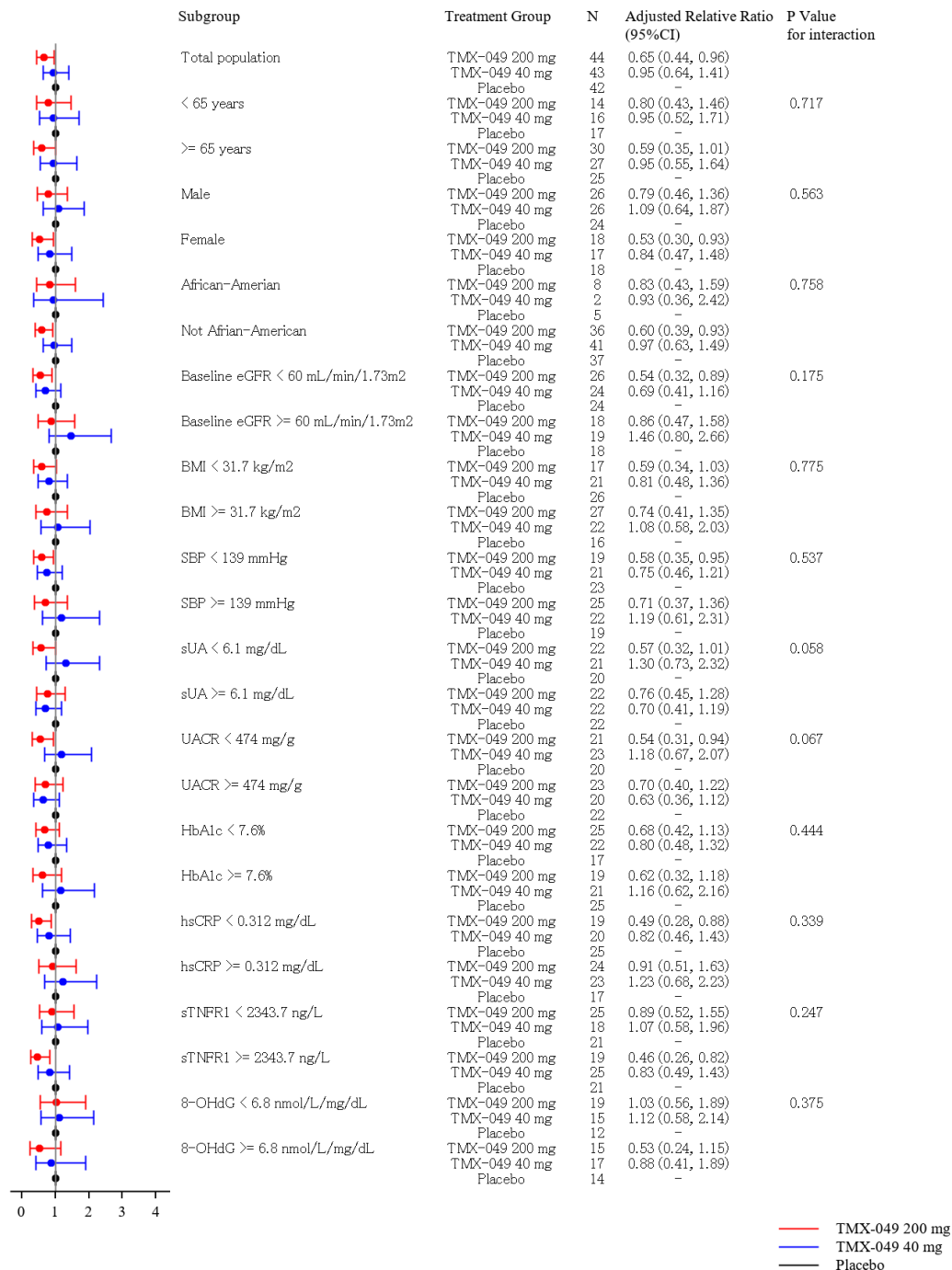
a) ANCOVA, with randomized treatment and randomization strata of the UACR and sUA as independent variables.

b) MMRM, which included randomized treatment, randomization strata of the UACR and sUA, timepoint (week), and a treatment-by-timepoint interaction as fixed effects and patient as a random effect. The restricted maximum likelihood method for estimation was used. Within-patient errors were modeled using an unstructured (co)variance structure. The Kenward-Roger approximation was used to approximate the denominator degrees of freedom.

ANCOVA, analysis of covariance; CI, confidence Interval; LOCF, last-observation carried-forward; LS mean, least squares mean; MMRM, mixed model for repeated measures; OC, observed case; QD, once daily; sUA, serum uric acid; UACR, urine albumin-to-creatinine ratio.

Supplementary Figure 1. Results of a subgroup analysis according to the baseline characteristics: The relative ratio (95% CI) of adjusted geometric means of Week 12 to baseline ratio in UACR between TMX-049 200 mg/40 mg group and placebo group for subgroups.

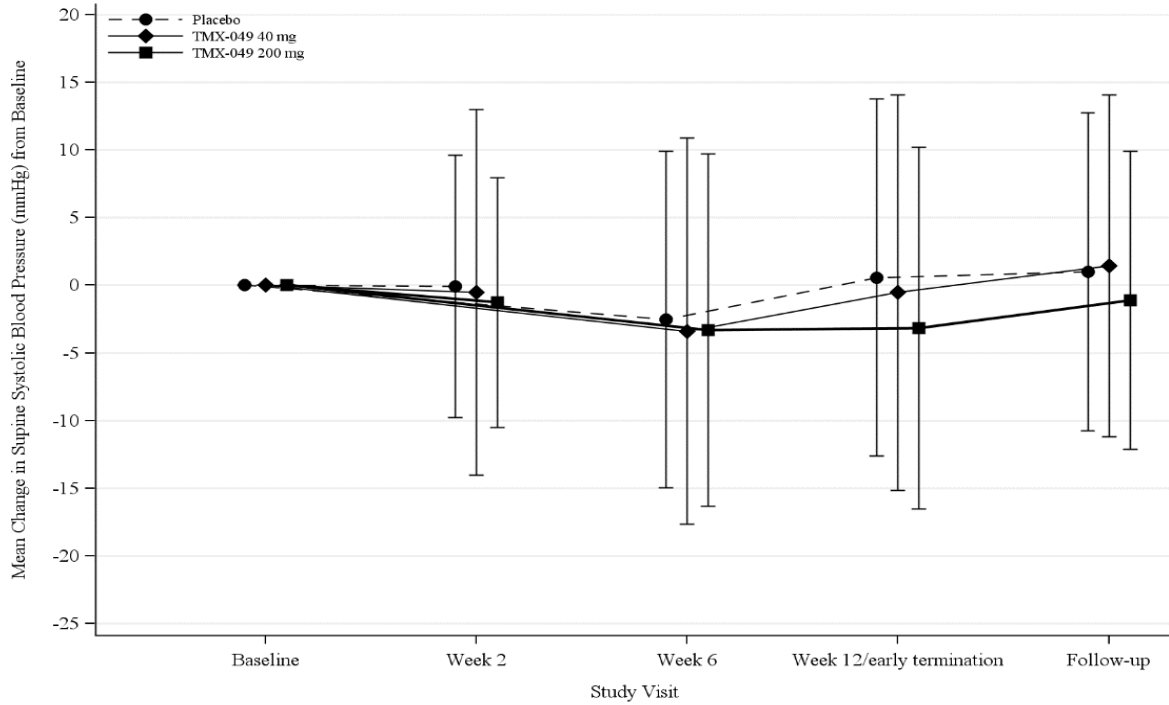
Data are presented for the modified intention-to-treat population (N=129): TMX-049 200 mg (n=44), TMX-049 40 mg (n=43), and placebo (n=42).



8-OHdG, creatinine-corrected 8-hydroxy-2'-deoxyguanosine; BMI, body mass index; CI, confidence interval; eGFR, estimated glomerular filtration rate; HbA1c, glycated hemoglobin; hsCRP, high-sensitivity C-reactive protein; SBP, systolic blood pressure; sTNFR1, soluble tumor necrosis factor receptor 1; sUA, serum uric acid; UACR, urine albumin-to-creatinine ratio.

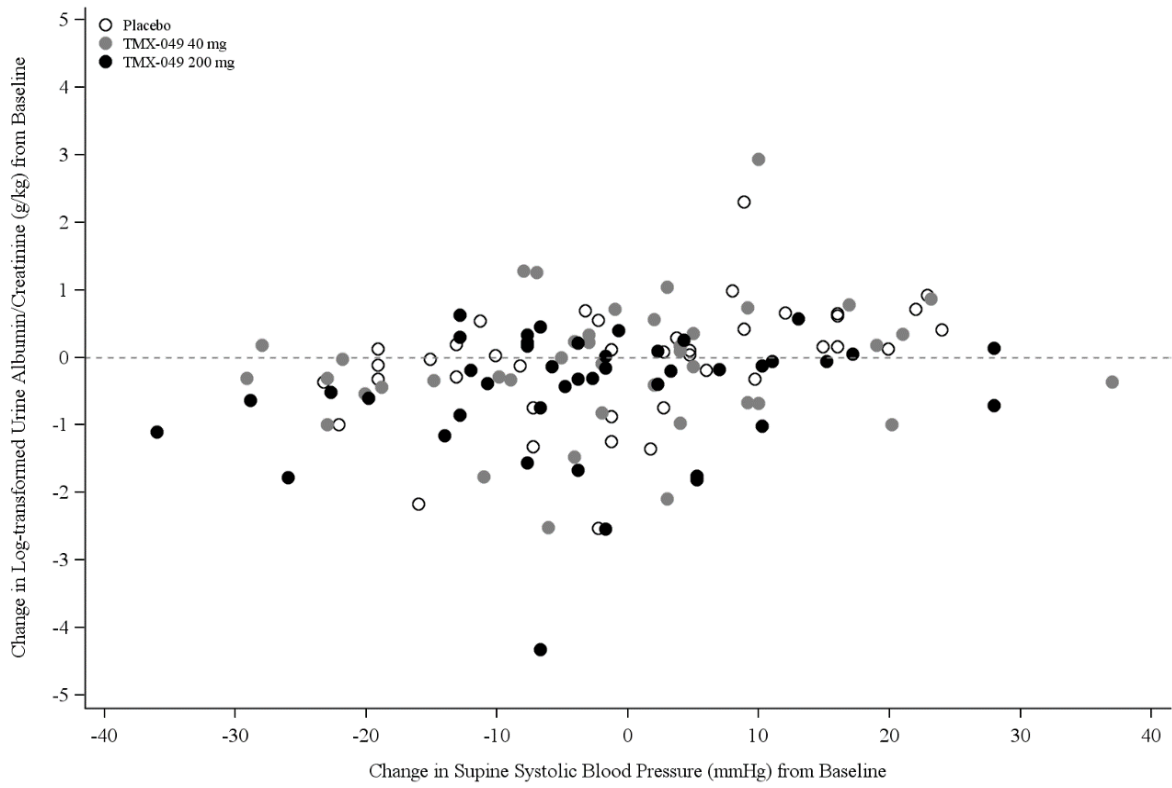
Supplementary Figure 2. Mean change (\pm standard deviation) in the supine systolic blood pressure from baseline to each study visit.

Data are presented for the safety population ($N=130$): TMX-049 200 mg ($n=44$), TMX-049 40 mg ($n=44$), and placebo ($n=42$). The baseline means of the TMX-049 200 mg, TMX-049 40 mg, and placebo groups were 139, 138, and 137, respectively.



Supplementary Figure 3. Scatter plot of changes in the UACR versus changes in the supine systolic blood pressure from baseline to Week 12.

Data are presented for the modified intention-to-treat population ($N=129$): TMX-049 200 mg ($n=44$), TMX-049 40 mg ($n=43$), and placebo ($n=42$).



UACR, urine albumin-to-creatinine ratio.