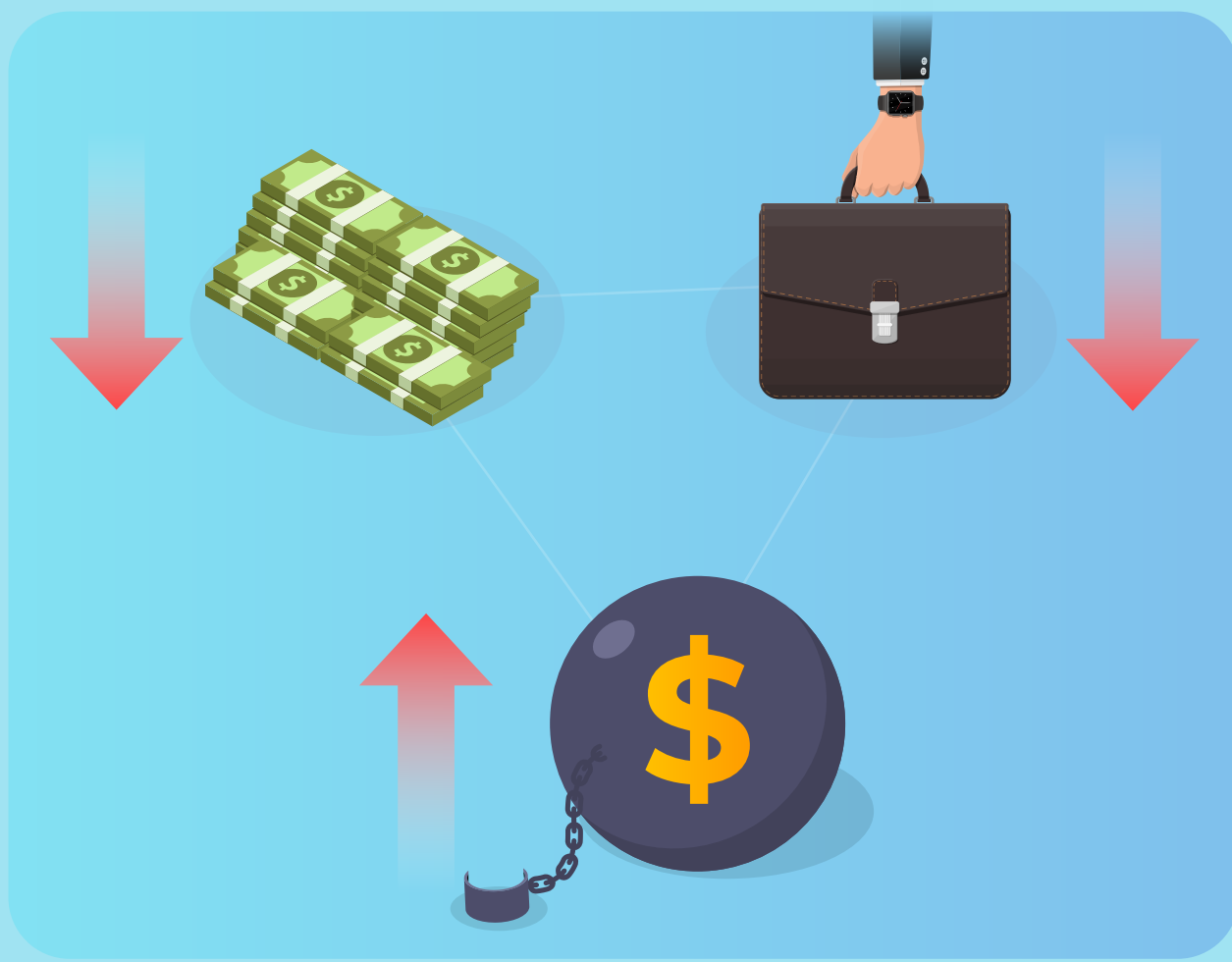


# Does Financial Strain Affect the Impact of Mental Illness on Homelessness?

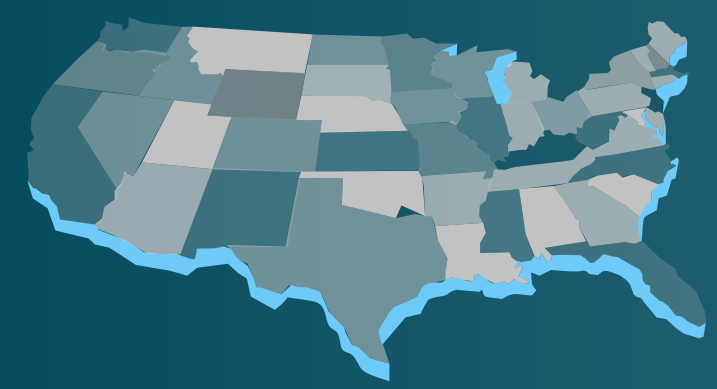
The relationship between severe mental illness and homelessness is well-established



Adults with severe mental illness are also known to have lower incomes, worse employment, and greater financial barriers than adults without severe mental illness

**To what extent does financial strain mediate the relationship between severe mental illness and homelessness?**

National epidemiologic survey on alcohol and related conditions



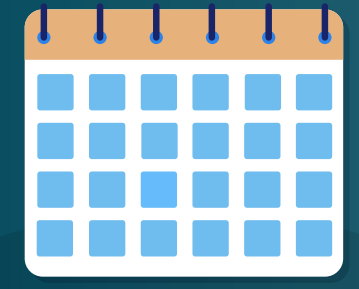
34,653 participants representative of the US population



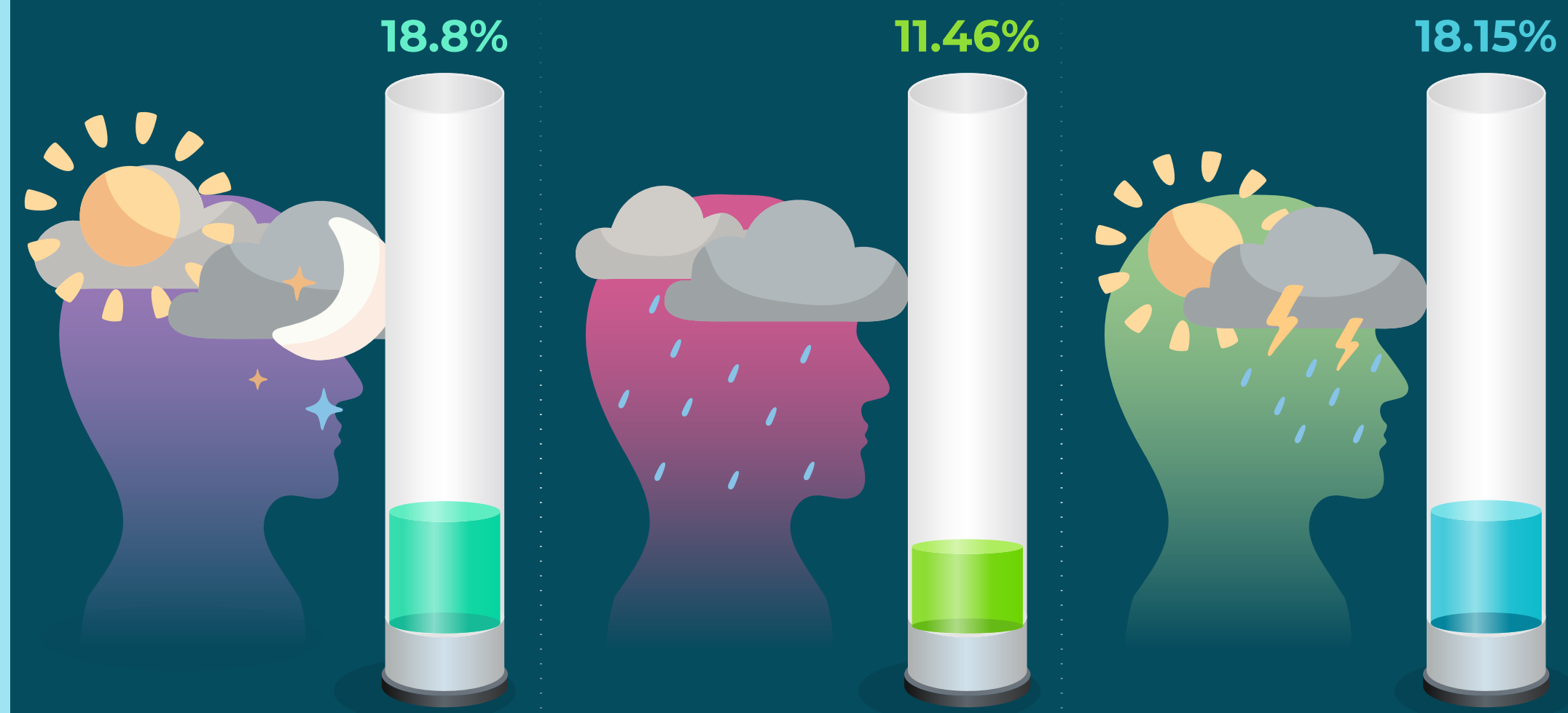
Four financial strain variables (low income, worse employment, debts, history of homelessness)



Longitudinal study of 3 year period



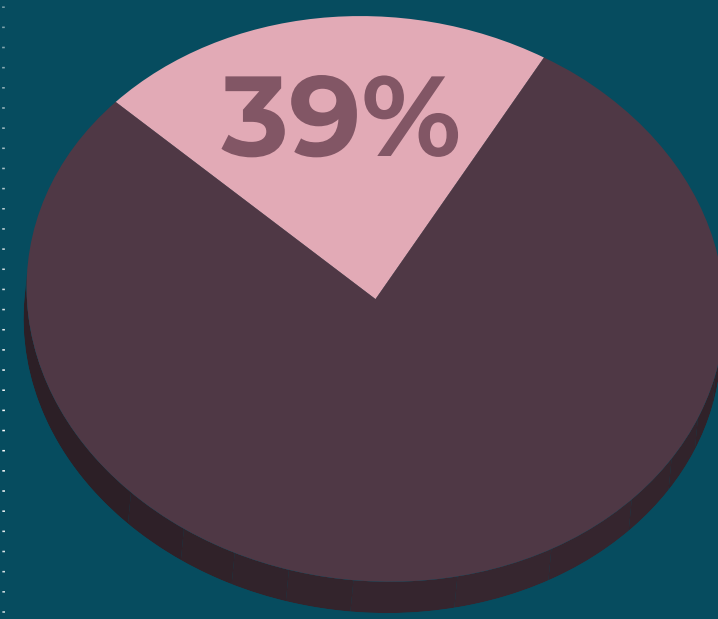
## Percentage of participants with severe mental illness reporting homelessness



18.8% of respondents with psychotic disorder

11.46% of respondents with major depressive disorder

18.15% of respondents with bipolar disorder



Effect of financial strain on the link between severe mental illness and homelessness

**Financial strain significantly mediates the link between severe mental illness and homelessness, and adults with severe mental illness experiencing homelessness may benefit from programs aimed at achieving financial literacy and well-being**