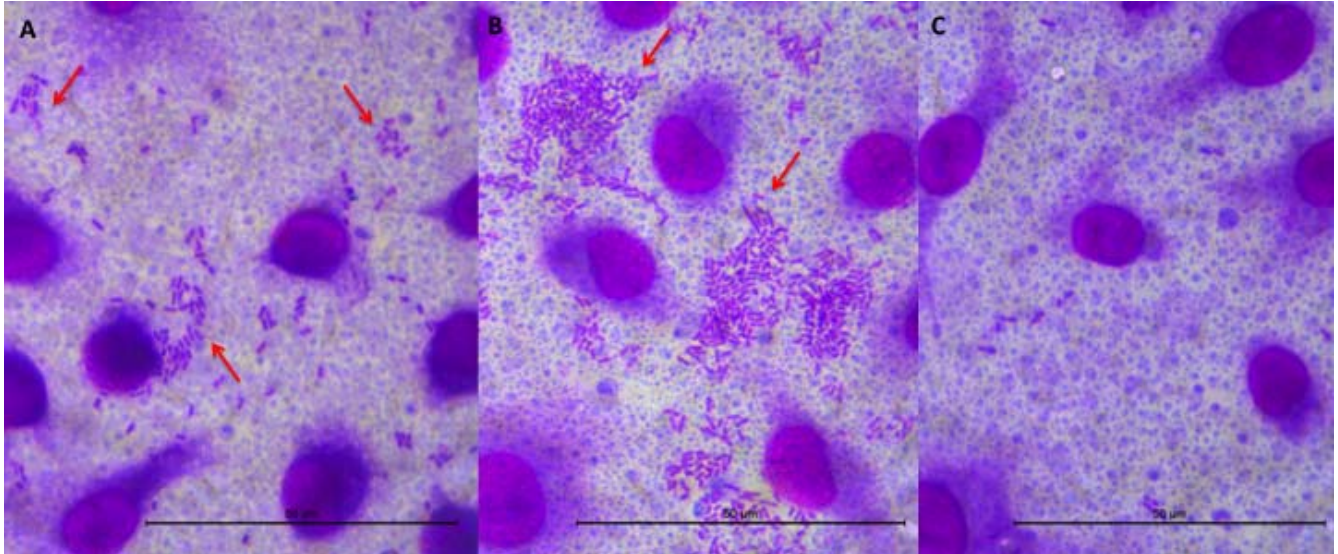


**Figure S1.** Adherence pattern of *E. coli* strains (inoculum  $10^5$  c.f.u/mL) stained with May-Grunwald-Giemsa staining method on HEp-2. EAEC strain 042 was used as positive control and commensal *E. coli* strain HS was used as negative control for adherence pattern test. Red arrows indicate the bacterial aggregates. Increase of 100X. (A) EAEC strain 042. (B) EAEC strain LDI002. (C) Commensal *E. coli* HS.



**Figure S2.** Analysis of transcription of caspases-3 (F), -8 (G) and -9 (H) in IEC-6 cells post- EAEC infection (inoculum  $10^5$  c.f.u/mL) for 3 hours, and after supplementation with Ala-Gln (1 mM/mL). The datasets represent the mean  $\pm$  SEM of four independent experiments. \*  $P < 0.05$  compared to uninfected control; #  $P < 0.05$ , compared to EAEC strain 042-infection;  $\ni$   $P < 0.05$ , compared to EAEC strain PMV001-infection.

