

Fig. S2. Expression of α -synuclein, MHC class II and MHC class I proteins in melanoma TMA cores.

The tissue sections **A** Stage II melanoma TMA cores, **B** Stage III melanoma TMA cores, **C** Stage IV melanoma TMA cores, **D** Normal skin TMA cores were stained with H&E or probed with antibody to human α -synuclein protein (pseudocolored red), to MHC class II proteins (HLA DQ/DR/DP) (pseudocolored yellow), or to human MHC class I proteins (HLA-ABC) (pseudocolored green) and counterstained with fluorescent DAPI (pseudocolored blue). Scale bar - 100 μ m. Images of TMA cores that the camera of the digital slide scanner did not capture are marked in the blank areas with an X.

a1

H&E

α -Syn

MHC II

MHC I

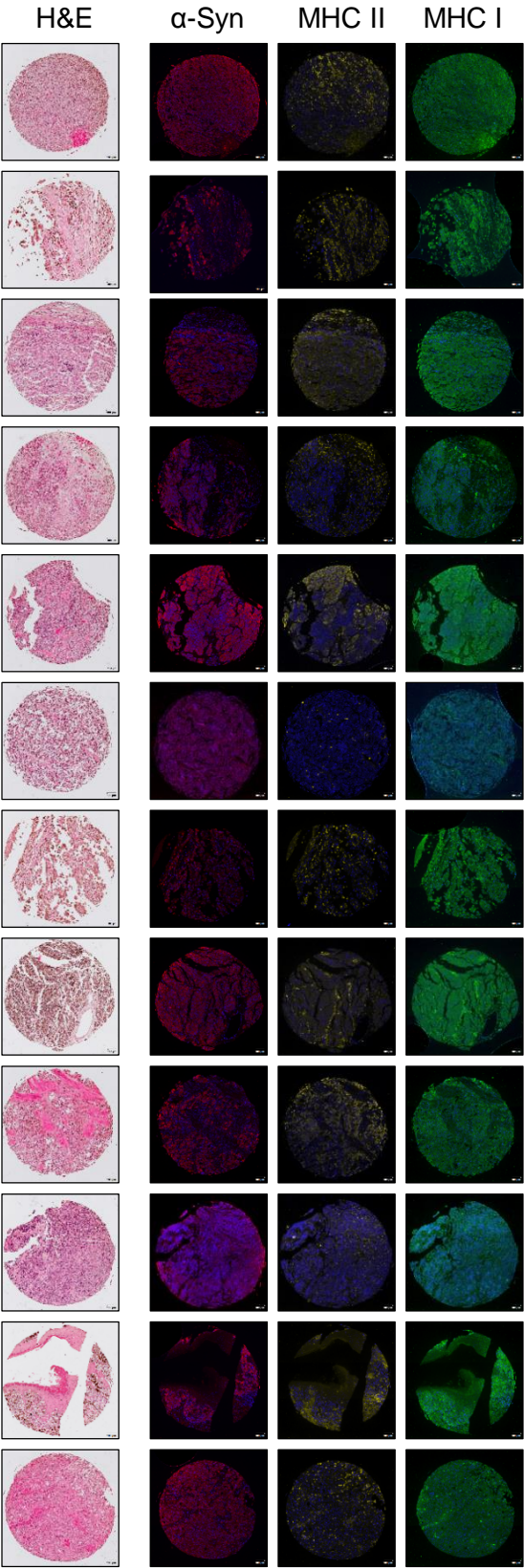
H&E

α -Syn

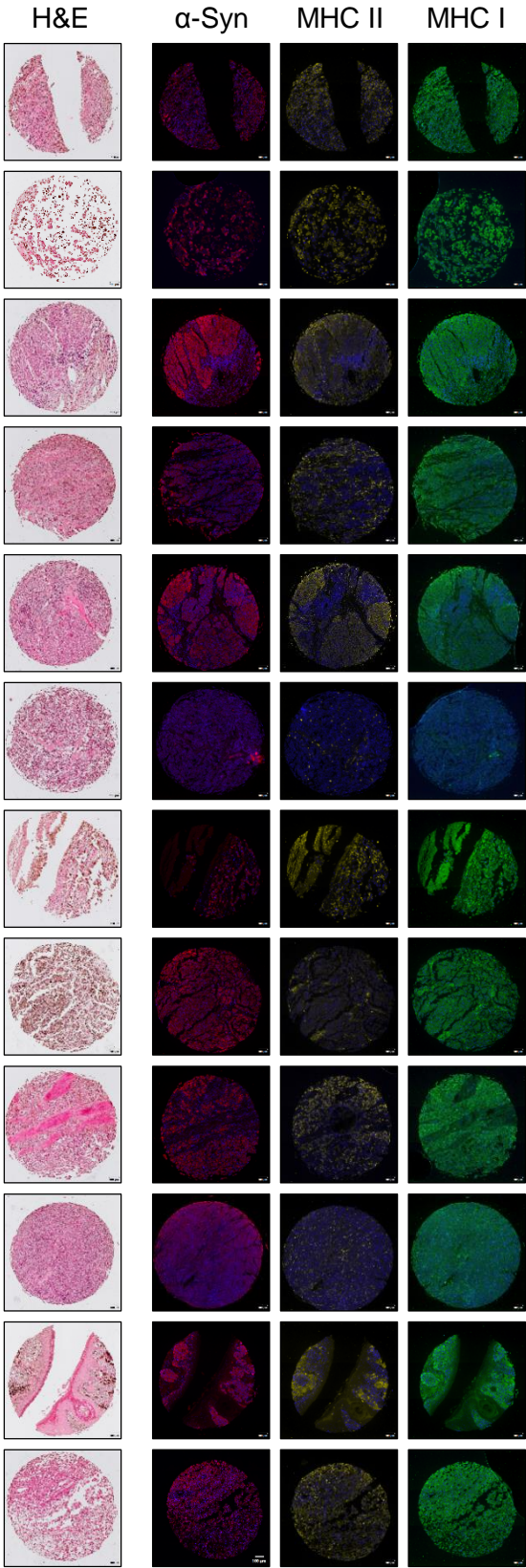
MHC II

MHC I

A (continued)

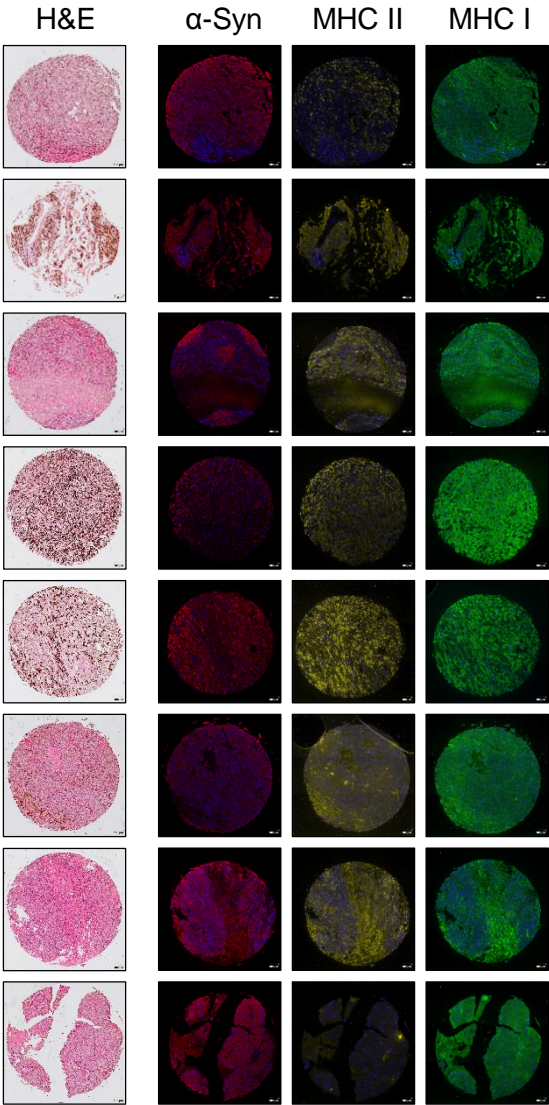
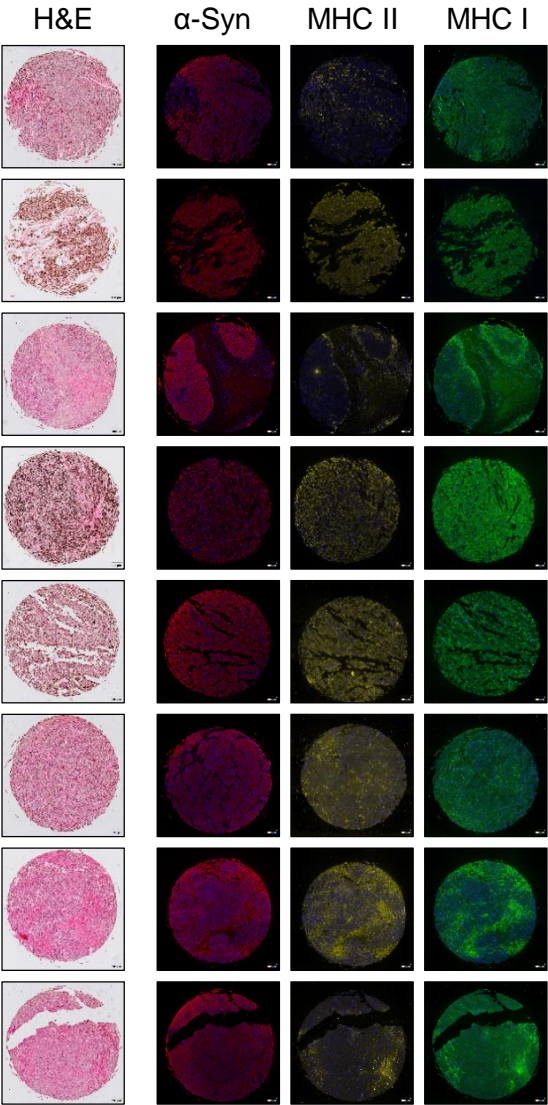


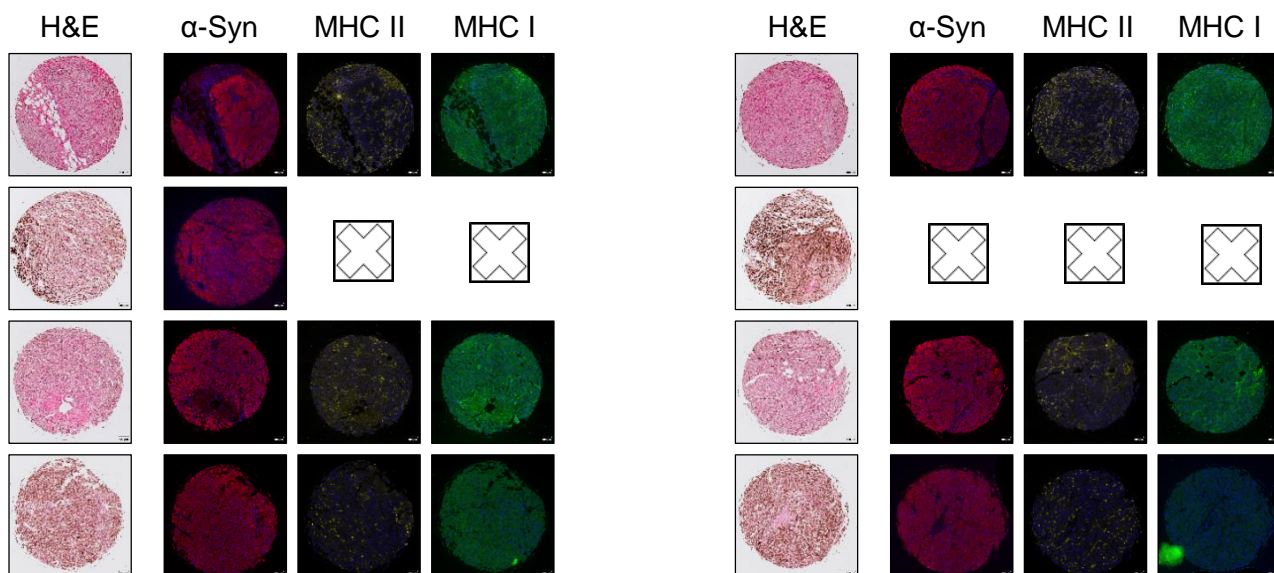
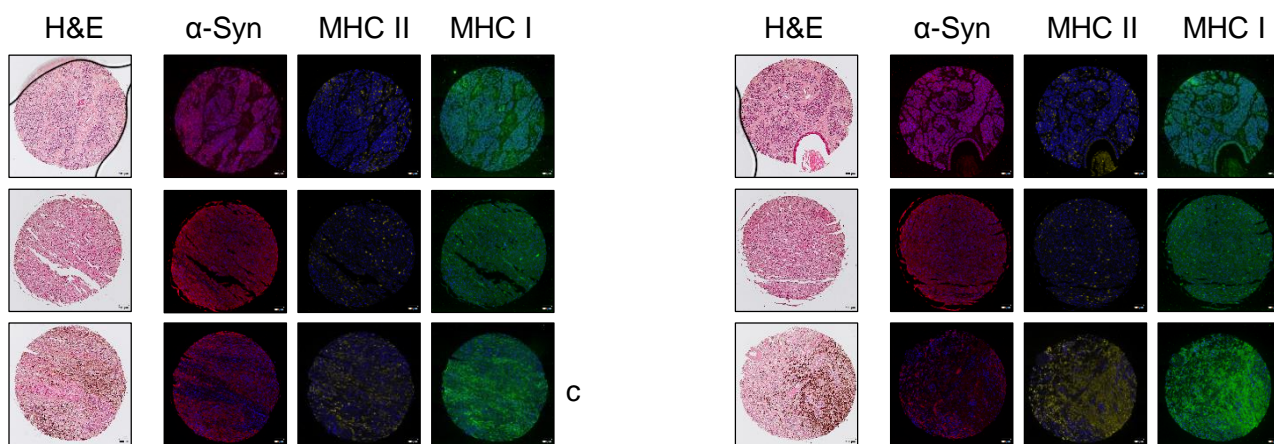
a2



b1

A (continued)



B**C****D**