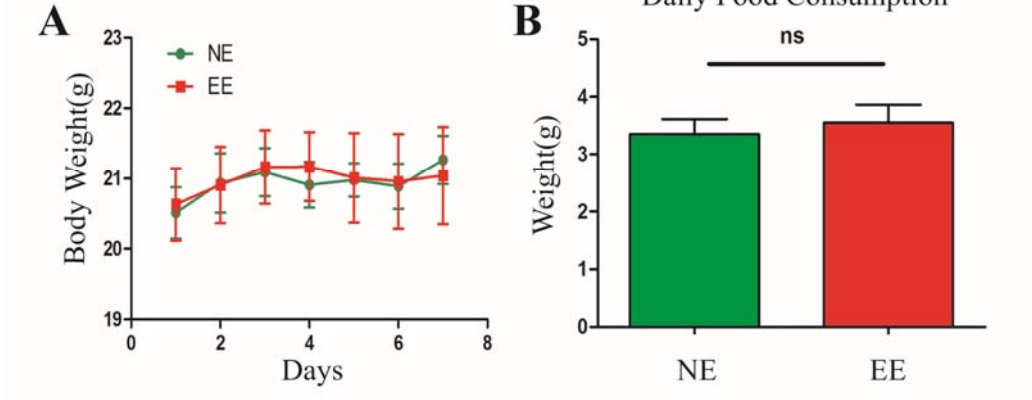


Figure S1



1

2 **Figure S1 Body weight and daily food consumption between NE and EE group. (A)**

3 Daily body weight of mice was measured. (B) Average daily food consumption was

4 measured. * $p < 0.05$, ** $p < 0.01$, *** $p < 0.001$, compared with the NE group by student's

5 t test of independent sample for all statistical analyses.