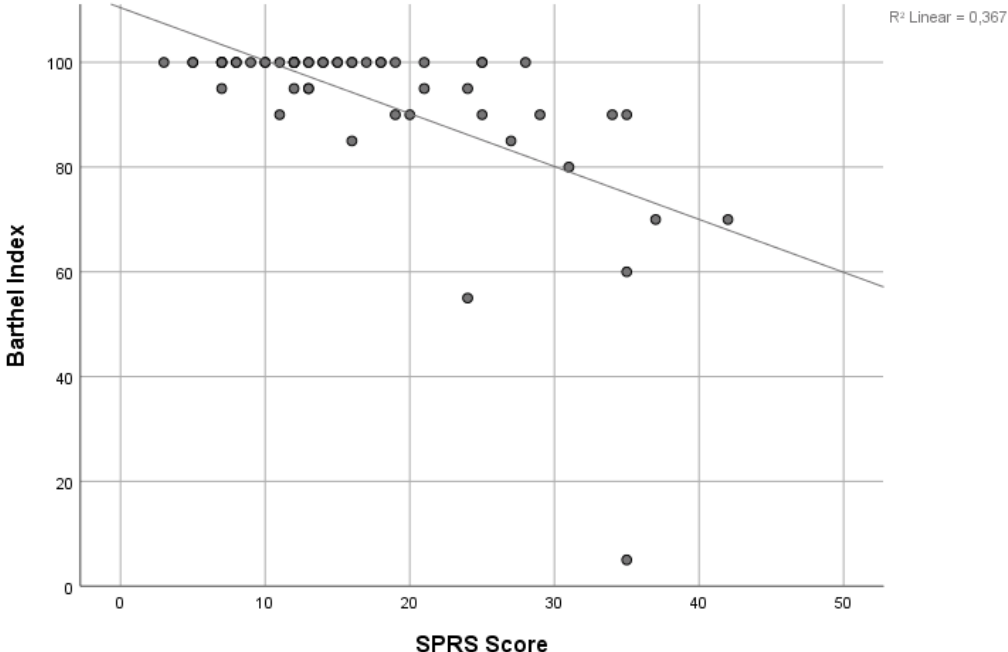
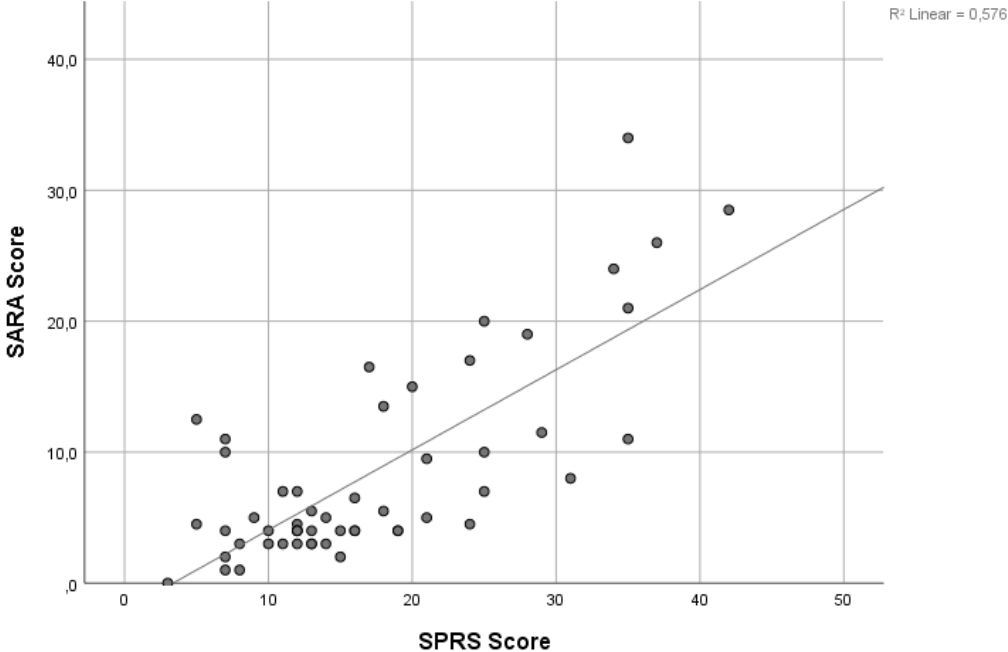
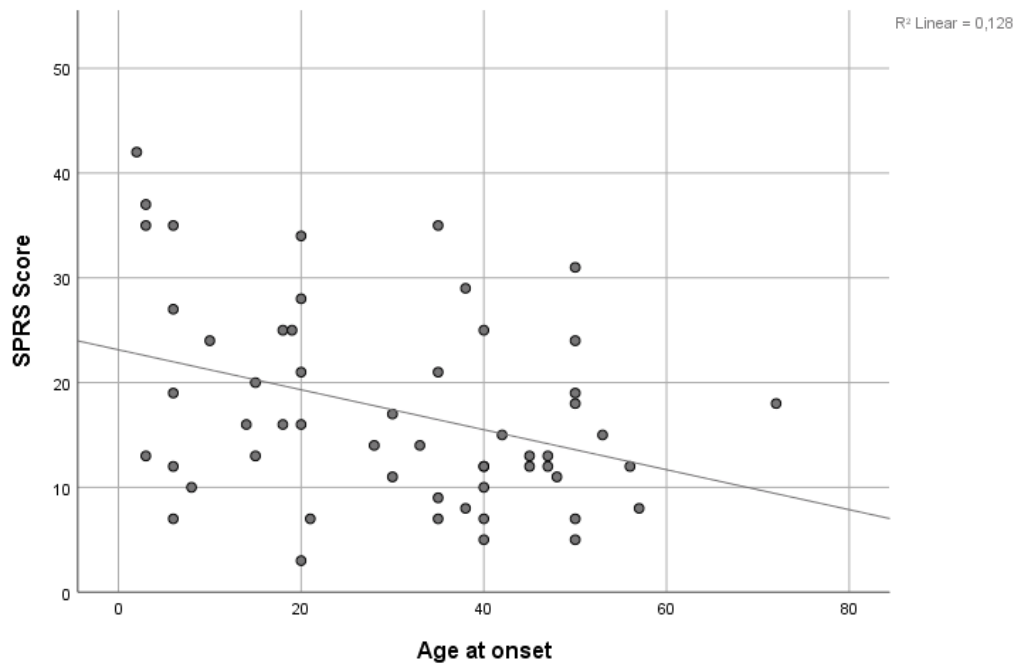
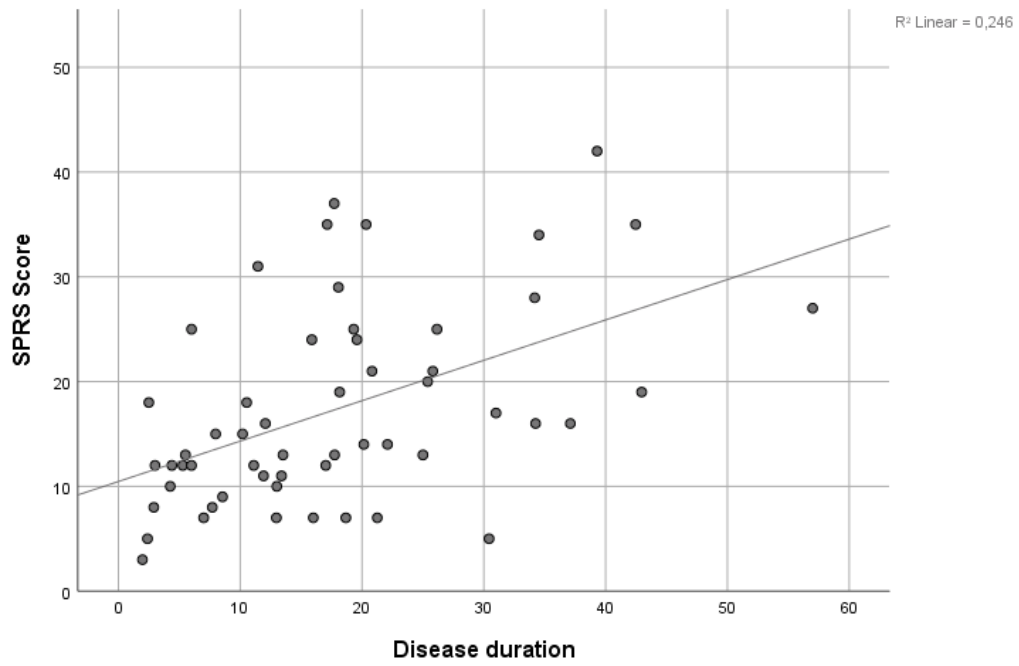
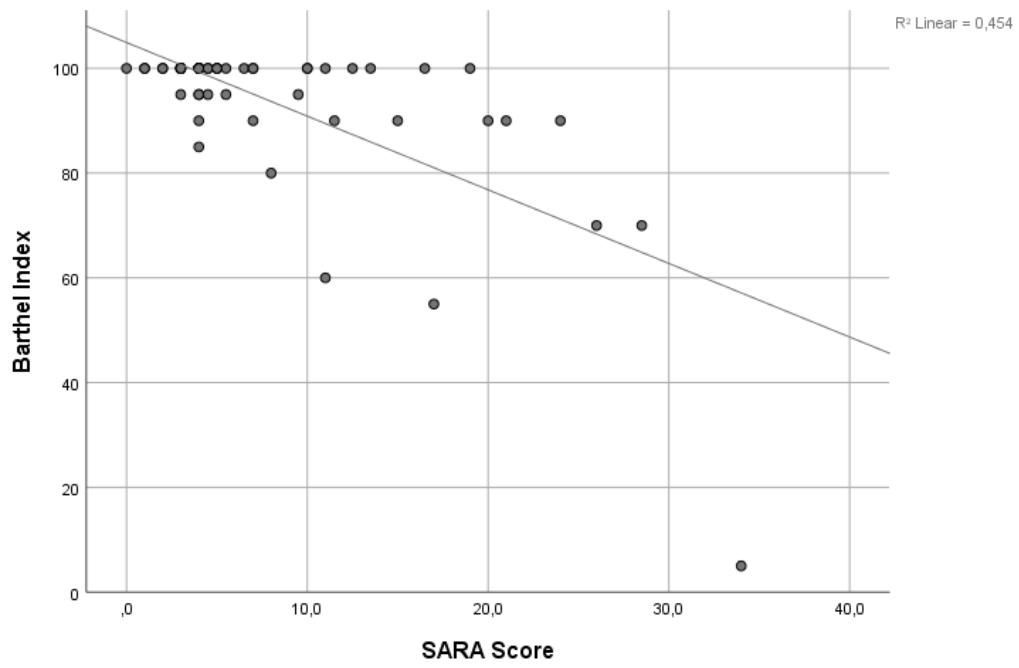
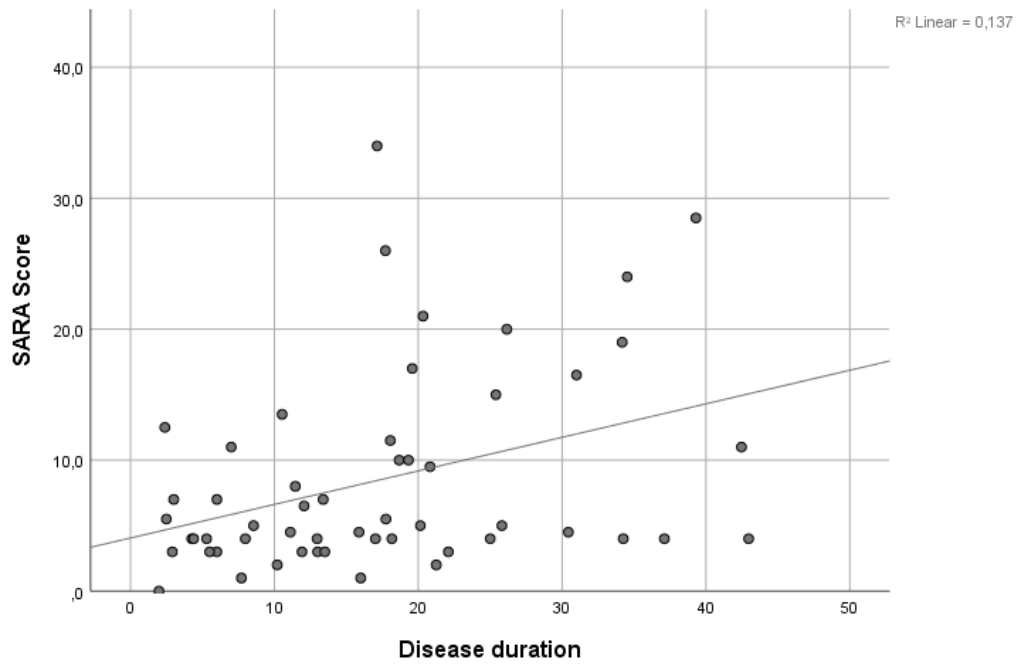


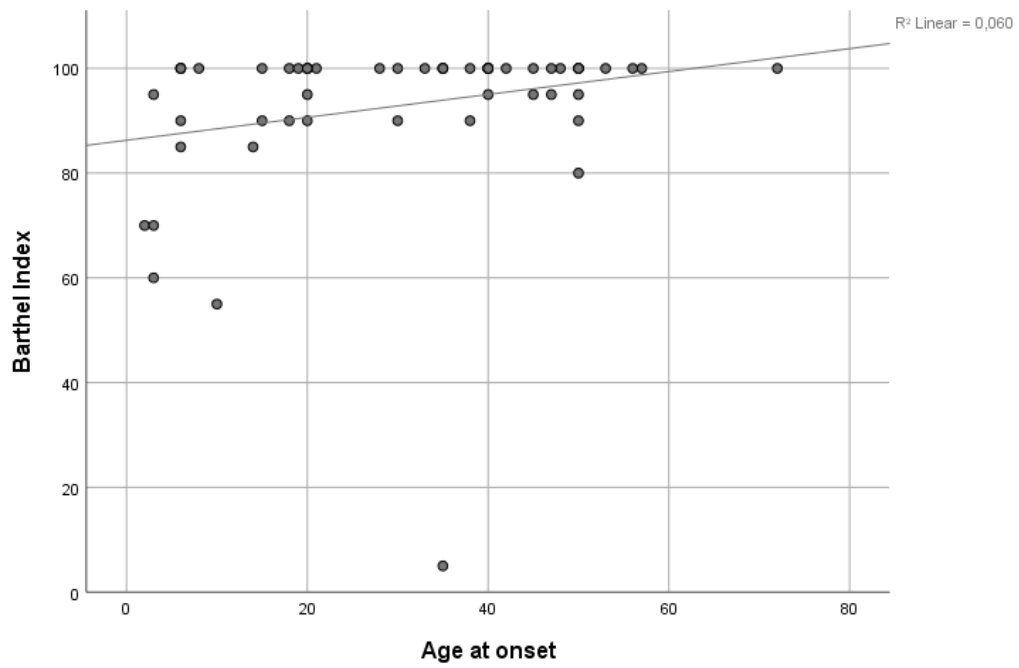
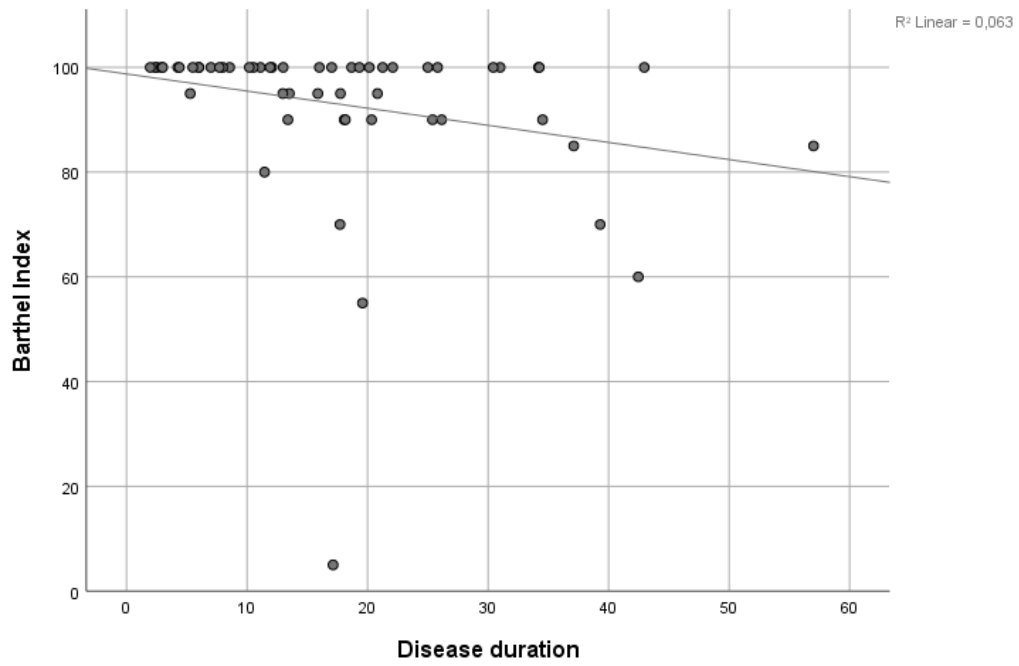
eFigure 1

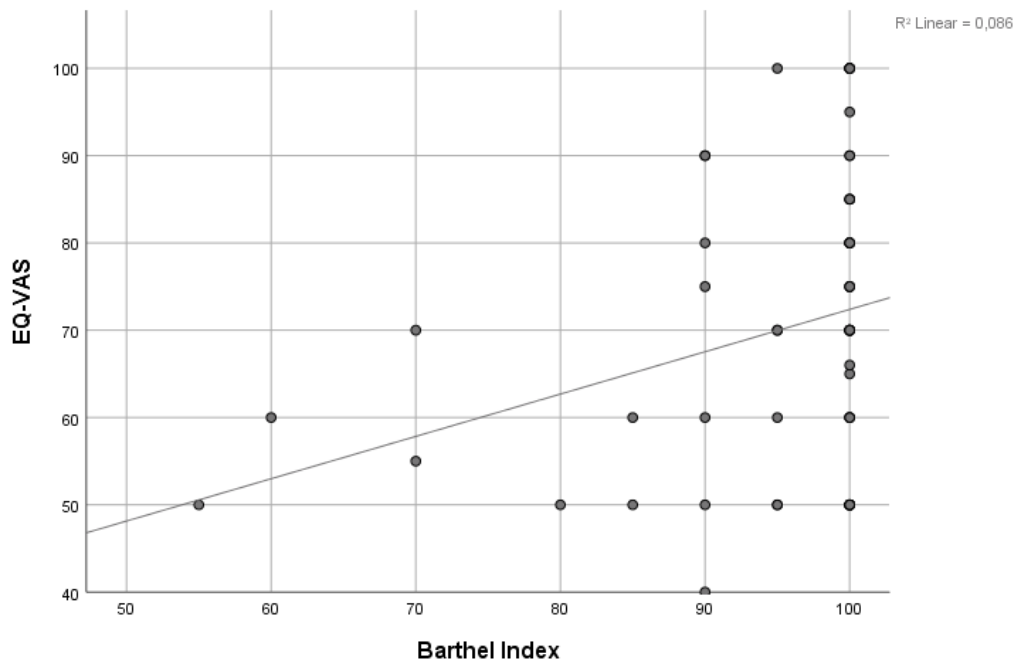
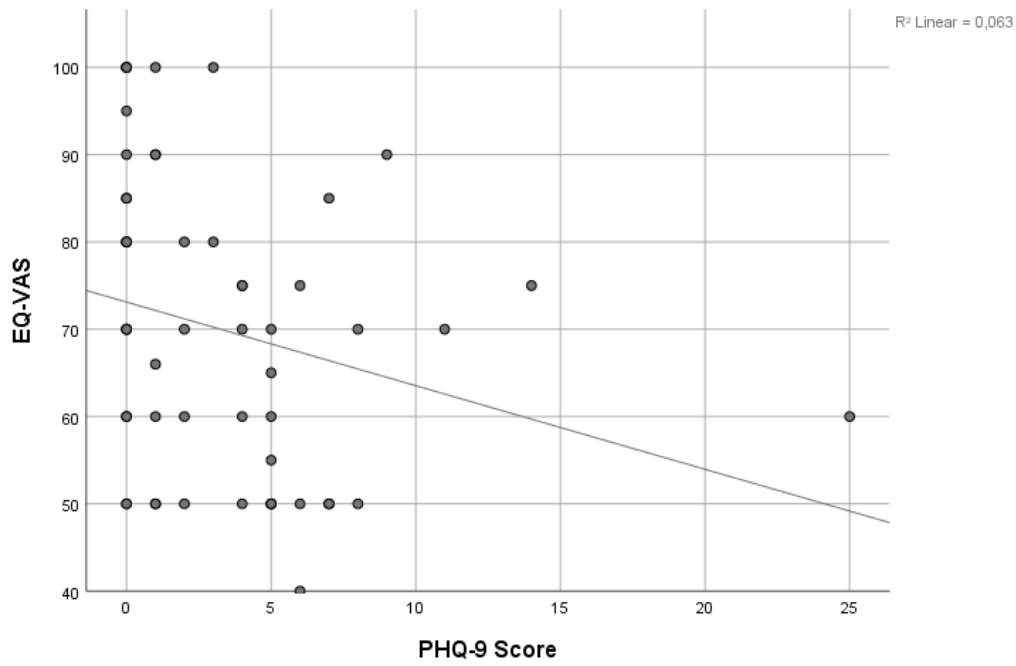
Scatter plots with regression lines of all significant correlations between demographics, patient reported as well as clinician reported outcome measures at baseline







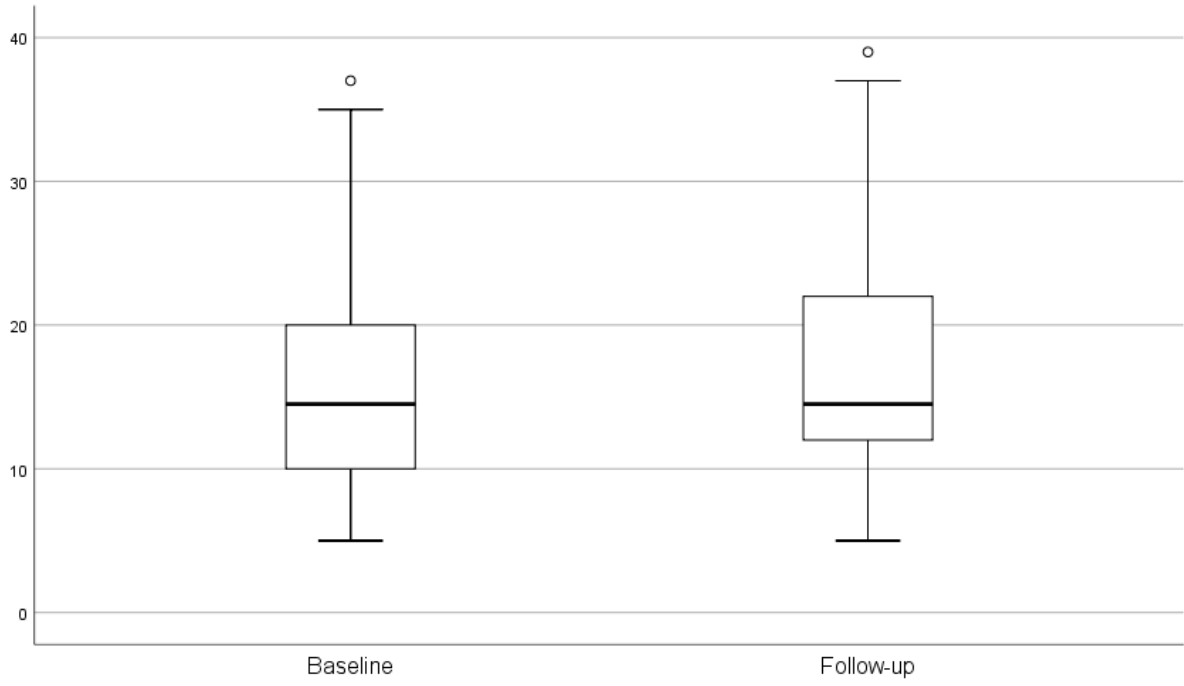




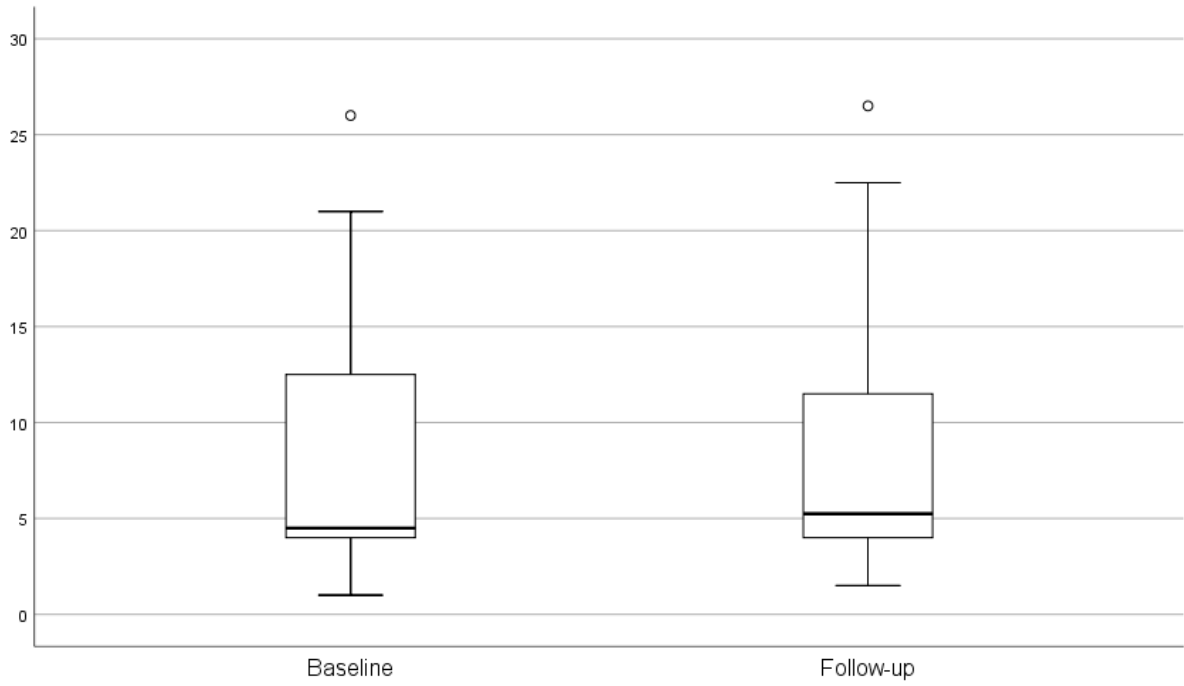
eFigure 2

Box plots depicting all used patient reported and clinician reported outcomes at baseline and follow-up

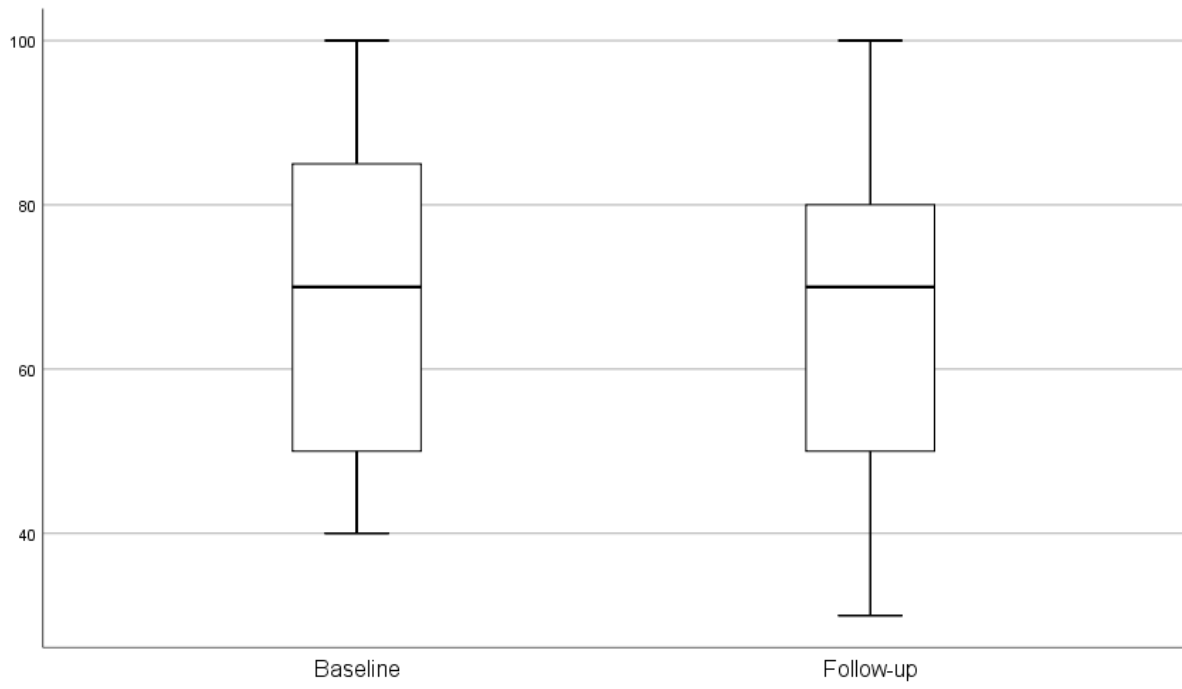
**SPRS Score**



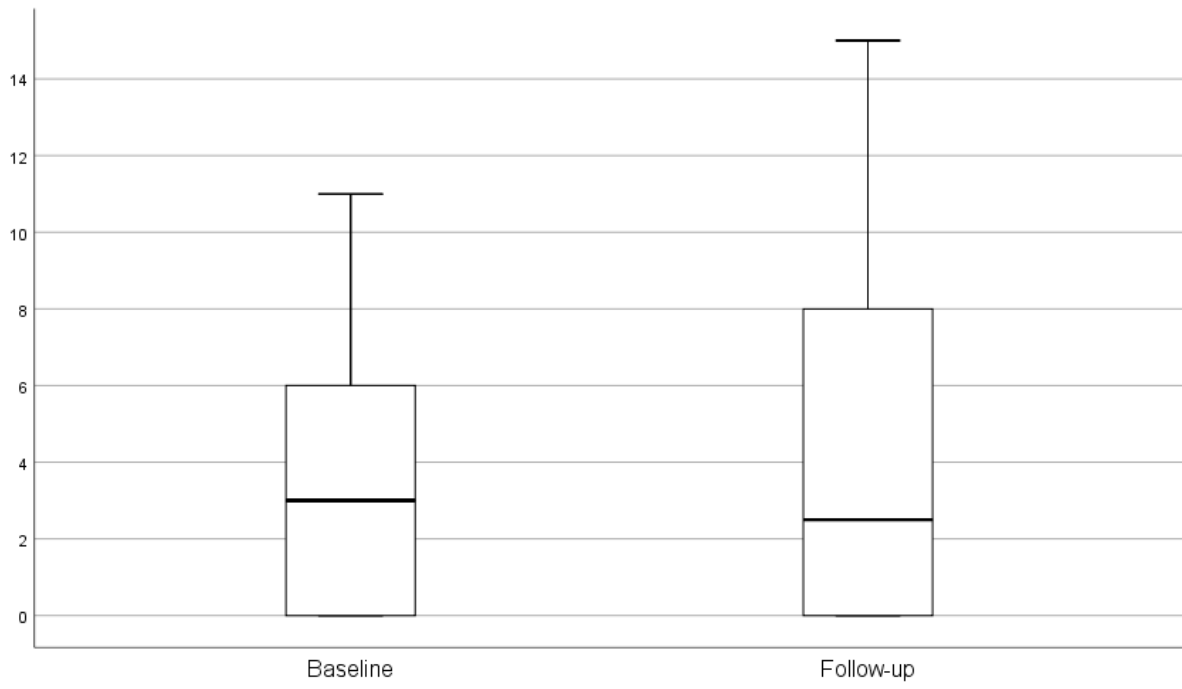
**SARA Score**

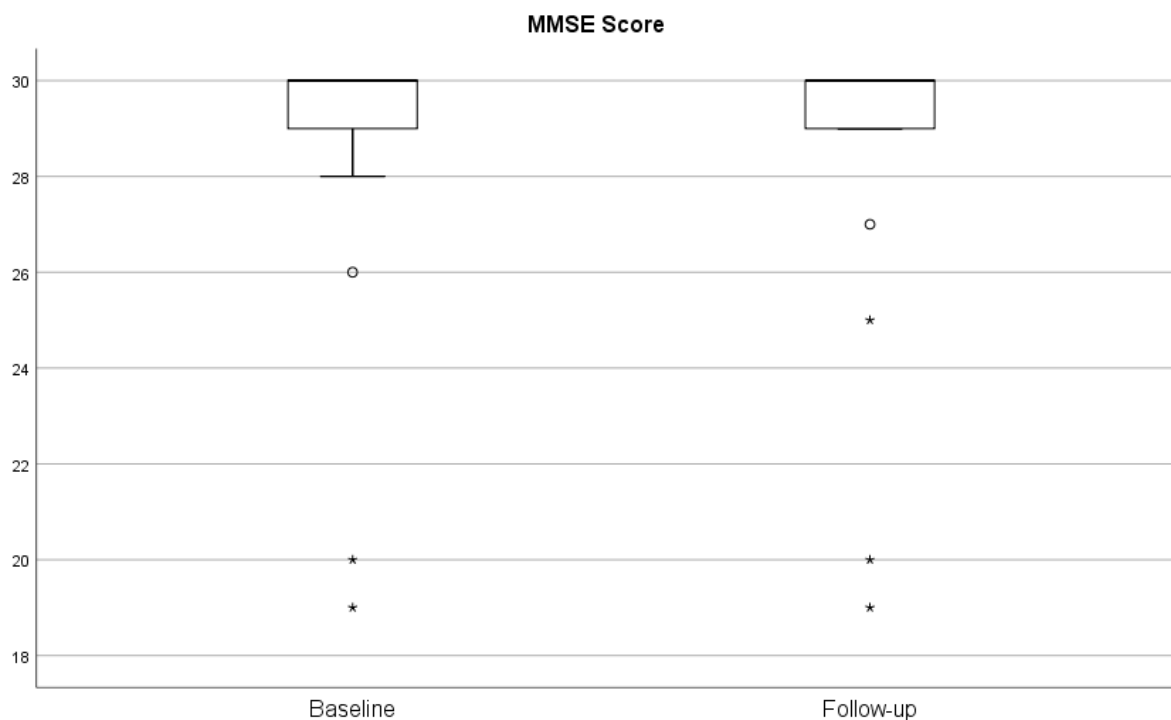


### EQ-VAS



### PHQ-9 Score





## eAppendix 1

SPSS-Output of the regression analysis with SPRS as independent and all SARA sub-items as independent variables

### Variables Entered/Removed<sup>a</sup>

Model	Variables Entered	Variables Removed	Method
1	Gait item		Stepwise (Criteria: Probability-of-F-to-enter <= ,050, Probability-of-F-to-remove >= ,100).
2	Finger chase item		Stepwise (Criteria: Probability-of-F-to-enter <= ,050, Probability-of-F-to-remove >= ,100).
3	Heel-shin slide item		Stepwise (Criteria: Probability-of-F-to-enter <= ,050, Probability-of-F-to-remove >= ,100).

a. Dependent Variable: SPRS Score

### Model Summary

Model	R	R Square	Adjusted R Square	Std. Error of the Estimate
1	,892 <sup>a</sup>	0.796	0.792	4.302
2	,902 <sup>b</sup>	0.814	0.807	4.149
3	,923 <sup>c</sup>	0.852	0.843	3.740

a. Predictors: (Constant), Gait item



- b. Predictors: (Constant), Gait item, Finger-chase item  
 c. Predictors: (Constant), Gait item, Finger-chase item, Heel-shin-slide item

### ANOVA<sup>a</sup>

Model		Sum of Squares	df	Mean Square	F	Sig.
1	Regression	3615.188	1	3615.188	195.346	,000 <sup>b</sup>
	Residual	925.331	50	18.507		
	Total	4540.519	51			
2	Regression	3697.161	2	1848.580	107.404	,000 <sup>c</sup>
	Residual	843.359	49	17.211		
	Total	4540.519	51			
3	Regression	3869.111	3	1289.704	92.203	,000 <sup>d</sup>
	Residual	671.408	48	13.988		
	Total	4540.519	51			

- a. Dependent Variable: SPRS Score  
 b. Predictors: (Constant), Gait item  
 c. Predictors: (Constant), Gait item, Finger-chase item  
 d. Predictors: (Constant), Gait item, Finger-chase item, Heel-shin-slide item

### Coefficients<sup>a</sup>

Model		Unstandardized Coefficients		Standardized Coefficients	t	Sig.
		B	Std. Error	Beta		
1	(Constant)	3.409	1.147		2.973	0.005
	Gait item	4.162	0.298	0.892	13.977	0.000
2	(Constant)	2.911	1.129		2.579	0.013
	Gait item	4.625	0.357	0.992	12.952	0.000
	Finger chase item	-2.668	1.222	-0.167	-2.182	0.034
3	(Constant)	3.292	1.024		3.216	0.002
	Gait item	4.357	0.331	0.934	13.165	0.000
	Finger chase item	-6.297	1.512	-0.394	-4.165	0.000
	Heel-shin slide item	2.469	0.704	0.329	3.506	0.001

- a. Dependent Variable: SPRS-Score

### Excluded Variables<sup>a</sup>

Model		Beta In	t	Sig.	Partial Correlation	Collinearity Statistics Tolerance
1	Stance item	,139 <sup>b</sup>	1.280	0.206	0.180	0.341
	Sitting item	,070 <sup>b</sup>	0.948	0.348	0.134	0.739
	Speech disturbance item	-,060 <sup>b</sup>	-0.799	0.428	-0.113	0.717
	Finger chase item	-,167 <sup>b</sup>	-2.182	0.034	-0.298	0.647
	Nose-finger test item	-,009 <sup>b</sup>	-0.127	0.899	-0.018	0.788
	Fast alternating handmovements item	-,045 <sup>b</sup>	-0.579	0.565	-0.082	0.691
	Heel-shin slide item	,061 <sup>b</sup>	0.778	0.440	0.110	0.657
2	Stance item	,344 <sup>c</sup>	3.045	0.004	0.402	0.253
	Sitting item	,149 <sup>c</sup>	1.988	0.053	0.276	0.638
	Speech disturbance item	,021 <sup>c</sup>	0.252	0.802	0.036	0.550
	Nose-finger test item	,026 <sup>c</sup>	0.365	0.717	0.053	0.748
	Fast alternating handmovements item	,073 <sup>c</sup>	0.797	0.429	0.114	0.461
	Heel-shin slide item	,329 <sup>c</sup>	3.506	0.001	0.452	0.349
3	Stance item	,163 <sup>d</sup>	1.129	0.265	0.163	0.148
	Sitting item	,061 <sup>d</sup>	0.805	0.425	0.117	0.536
	Speech disturbance item	-,063 <sup>d</sup>	-0.796	0.430	-0.115	0.501
	Nose-finger test item	,014 <sup>d</sup>	0.217	0.829	0.032	0.746
	Fast alternating handmovements item	,033 <sup>d</sup>	0.400	0.691	0.058	0.452

- a. Dependent Variable: SPRS Score  
 b. Predictors in the Model: (Constant), Gait item  
 c. Predictors in the Model: (Constant), Gait item, Finger chase item  
 d. Predictors in the Model: (Constant), Gait item, Finger chase item, Heel-shin slide item

SPSS-Output of the regression analysis with EQ-VAS as independent and sex, age, disease duration, SARA Score, SPRS Score, PHQ-9 Score and 4SMD as independent variables

**Variables Entered/Removed<sup>a</sup>**

Model	Variables Entered	Variables Removed	Method
1	Barthel Index		Stepwise (Criteria: Probability-of- F-to-enter <= ,050, Probability-of- F-to-remove >= ,100).

a. Dependent Variable: EQ-VAS

**Model Summary**

Model	R	R Square	Adjusted R Square	Std. Error of the Estimate
1	,278 <sup>a</sup>	0.077	0.059	16.287

a. Predictors: (Constant), Barthel Index

**ANOVA<sup>a</sup>**

Model		Sum of Squares	df	Mean Square	F	Sig.
1	Regression	1136.156	1	1136.156	4.283	,044 <sup>b</sup>
	Residual	13529.164	51	265.278		
	Total	14665.321	52			

a. Dependent Variable: EQ-VAS

b. Predictors: (Constant), Barthel Index

**Coefficients<sup>a</sup>**

Model		Unstandardized Coefficients		Standardized Coefficients	t	Sig.
		B	Std. Error	Beta		
1	(Constant)	26.750	21.072		1.269	0.210
	Barthel Score.0	0.458	0.221	0.278	2.070	0.044

a. Dependent Variable: EQ-VAS

**Excluded Variables<sup>a</sup>**

Model		Beta In	t	Sig.	Partial Correlation	Collinearity Statistics Tolerance
1	Sex	,075 <sup>b</sup>	0.542	0.590	0.076	0.961
	4SMD	,028 <sup>b</sup>	0.169	0.867	0.024	0.677
	Age	-,215 <sup>b</sup>	-1.584	0.119	-0.219	0.955
	Disease duration	,277 <sup>b</sup>	1.954	0.056	0.266	0.850
	SARA Score	,244 <sup>b</sup>	1.528	0.133	0.211	0.689
	SPRS Score	,114 <sup>b</sup>	0.641	0.524	0.090	0.575
	PHQ-9 Score	-,249 <sup>b</sup>	-1.897	0.064	-0.259	1.000

a. Dependent Variable: EQ-VAS

b. Predictors in the Model: (Constant), Barthel Index

SPSS-Output of the regression analysis with PHQ-9 Score as independent and sex, age, disease duration, SARA Score, SPRS Score, EQ-VAS and 4SMD as independent variables

**Variables Entered/Removed<sup>a</sup>**

Model	Variables Entered	Variables Removed	Method
1	Age		Stepwise (Criteria: Probability-of-F-to-enter <= ,050, Probability-of-F-to-remove >= ,100).
2	EQ-VAS		Stepwise (Criteria: Probability-of-F-to-enter <= ,050, Probability-of-F-to-remove >= ,100).
3	Sex		Stepwise (Criteria: Probability-of-F-to-enter <= ,050, Probability-of-F-to-remove >= ,100).

a. Dependent Variable: PHQ-9 Score

**Model Summary**

Model	R	R Square	Adjusted R Square	Std. Error of the Estimate
1	,393 <sup>a</sup>	0.155	0.138	4.134
2	,499 <sup>b</sup>	0.249	0.219	3.935
3	,568 <sup>c</sup>	0.322	0.281	3.777

a. Predictors: (Constant), Age

b. Predictors: (Constant), Age, EQ-VAS

c. Predictors: (Constant), Age, EQ-VAS, Sex

**ANOVA<sup>a</sup>**

Model		Sum of Squares	df	Mean Square	F	Sig.
1	Regression	159.580	1	159.580	9.337	,004 <sup>b</sup>
	Residual	871.665	51	17.091		
	Total	1031.245	52			
2	Regression	257.197	2	128.598	8.307	,001 <sup>c</sup>
	Residual	774.048	50	15.481		
	Total	1031.245	52			
3	Regression	332.200	3	110.733	7.762	,000 <sup>d</sup>
	Residual	699.046	49	14.266		
	Total	1031.245	52			

a. Predictors: (Constant), PHQ-9 Score

b. Predictors: (Constant), Age

c. Predictors: (Constant), Age, EQ-VAS

d. Predictors: (Constant), Age, EQ-VAS, Sex

**Coefficients<sup>a</sup>**

Model		Unstandardized Coefficients		Standardized Coefficients	t	Sig.
		B	Std. Error	Beta		
1	(Constant)	9.400	2.016		4.664	0.000

	Age.0	-0.124	0.040	-0.393	-3.056	0.004
2	(Constant)	15.866	3.211		4.941	0.000
	Age.0	-0.138	0.039	-0.439	-3.543	0.001
	EQ5D_VAS.0	-0.082	0.033	-0.311	-2.511	0.015
3	(Constant)	12.796	3.361		3.808	0.000
	Age.0	-0.132	0.037	-0.421	-3.535	0.001
	EQ5D_VAS.0	-0.091	0.032	-0.343	-2.865	0.006
	Geschlecht	2.538	1.107	0.272	2.293	0.026

a. Dependent Variable: PHQ-9 Score

### Excluded Variables<sup>a</sup>

Model		Beta In	t	Sig.	Partial Correlation	Collinearity Statistics Tolerance
1	Sex	,233 <sup>b</sup>	1.844	0.071	0.252	0.993
	4SMD	-,137 <sup>b</sup>	-1.065	0.292	-0.149	0.998
	Disease duration	-,254 <sup>b</sup>	-2.034	0.047	-0.276	0.999
	Barthel Index	,095 <sup>b</sup>	0.718	0.476	0.101	0.955
	SARA Score	-,206 <sup>b</sup>	-1.613	0.113	-0.222	0.984
	SPRS Score	-,149 <sup>b</sup>	-1.162	0.251	-0.162	0.997
	EQ-VAS	-,311 <sup>b</sup>	-2.511	0.015	-0.335	0.979
2	Sex	,272 <sup>c</sup>	2.293	0.026	0.311	0.980
	4SMD	-,182 <sup>c</sup>	-1.486	0.144	-0.208	0.980
	Disease duration	-,217 <sup>c</sup>	-1.790	0.080	-0.248	0.981
	Barthel Index	,218 <sup>c</sup>	1.677	0.100	0.233	0.857
	SARA Score	-,208 <sup>c</sup>	-1.715	0.093	-0.238	0.984
	SPRS Score	-,191 <sup>c</sup>	-1.566	0.124	-0.218	0.981
3	4SMD	-,134 <sup>d</sup>	-1.108	0.273	-0.158	0.943
	Disease duration	-,142 <sup>d</sup>	-1.129	0.265	-0.161	0.872
	Barthel Index	,168 <sup>d</sup>	1.304	0.198	0.185	0.825
	SARA Score	-,168 <sup>d</sup>	-1.412	0.164	-0.200	0.958
	SPRS Score	-,145 <sup>d</sup>	-1.208	0.233	-0.172	0.947

a. Dependent Variable: PHQ-9 Score

b. Predictors in the Model: (Constant), Age

c. Predictors in the Model: (Constant), Age, EQ-VAS

d. Predictors in the Model: (Constant), Age, EQ-VAS, Sex