

Figure e-1. Study flow chart for participants from the Kaiser Permanente Northern California (KPNC) MS Research Program, the Kaiser Permanente Southern California MS Sunshine Study, the Norwegian MS Registry and Biobank (NOR), the Epidemiological Investigation of Multiple Sclerosis and the Genes and Environment in Multiple Sclerosis (EIMS/GEMS) study, and the Genetic Epidemiology Research on Adult Health and Aging (GERA) study.

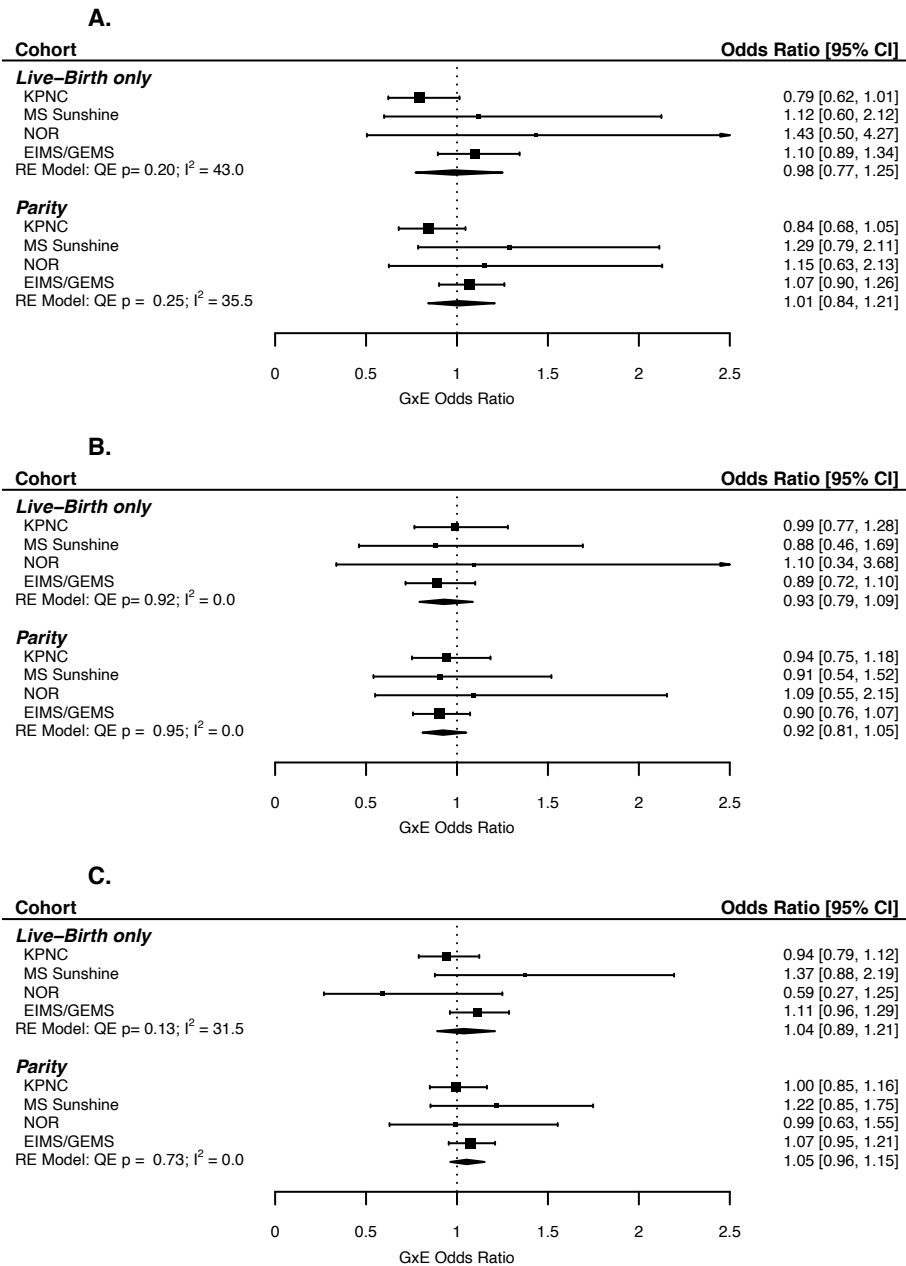


Figure e-2. Case-only meta-analysis results from live-birth only and parity models: A) *HLA-DRB1*15:01*, B) *HLA-A*02:01*, and C) continuous MS weighted genetic risk score. Estimates were adjusted for age of MS onset and population stratification. Odds ratios estimate the

departure of the multiplicative joint effects of pregnancy and risk variants on the risk-ratio scale for susceptibility to MS.