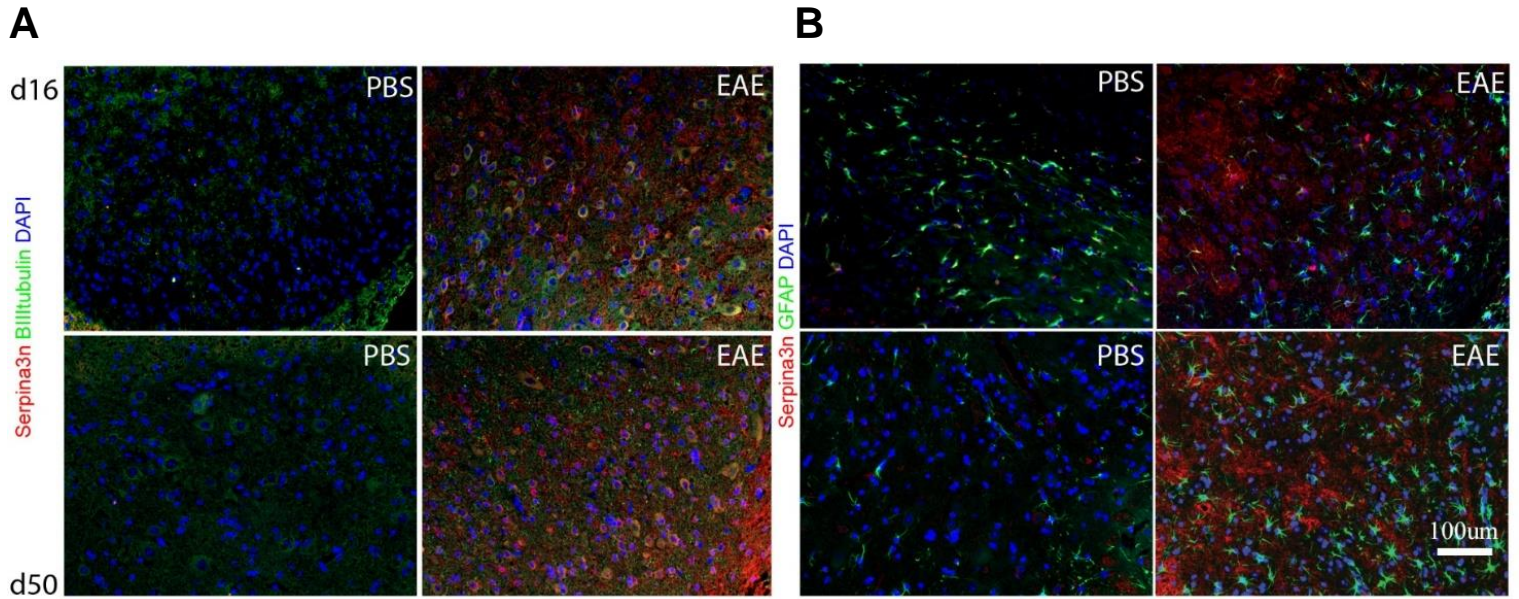


Figure e-1

Serpina3n



S100A4

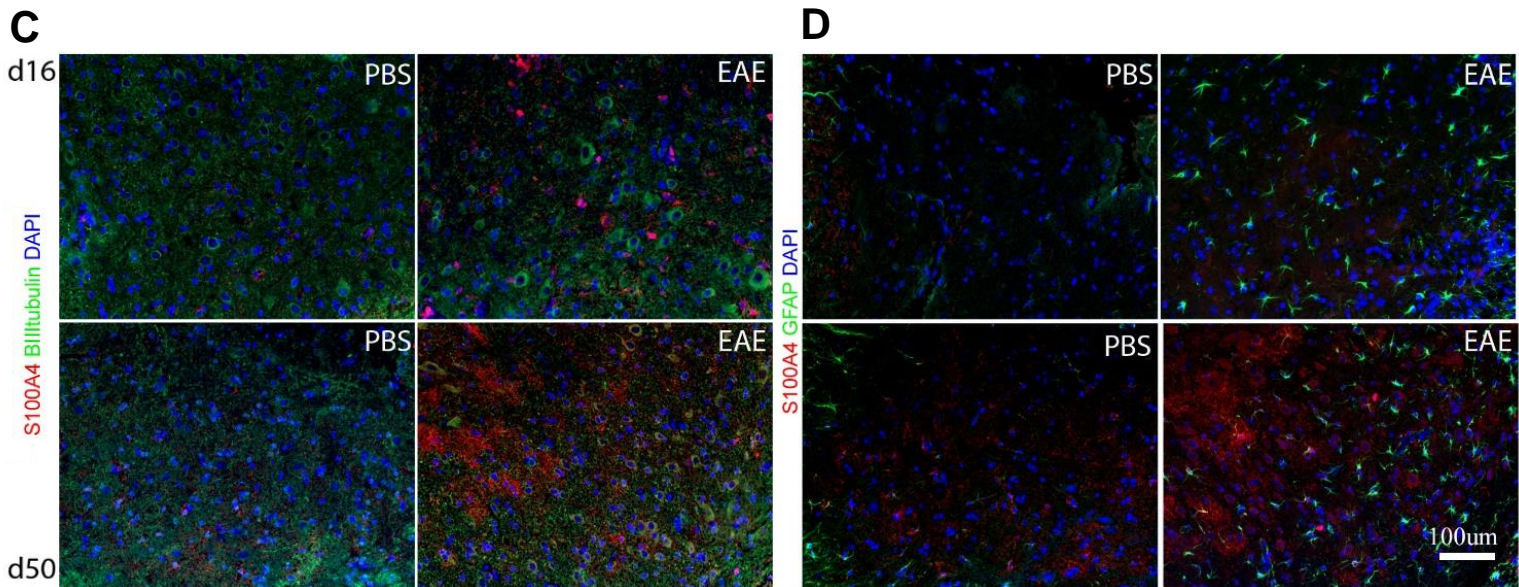


FIGURE e1: Serpina3n and S100A4 expression is restricted to spinal cord neurons during EAE. Representative images of Serpina3n and S100A4 expression in neurons and astrocytes from spinal cord of PBS (controls) or EAE mice at d16 and d50 post-immunization. Tissues were stained for: Serpina3n (red) (A-B), or S100A4 (red) (C-D) and co-stained with β -III-Tubulin (neuronal marker, green) (A, C), GFAP (astrocyte marker, green) (B, D) and DAPI (blue) (A-D).