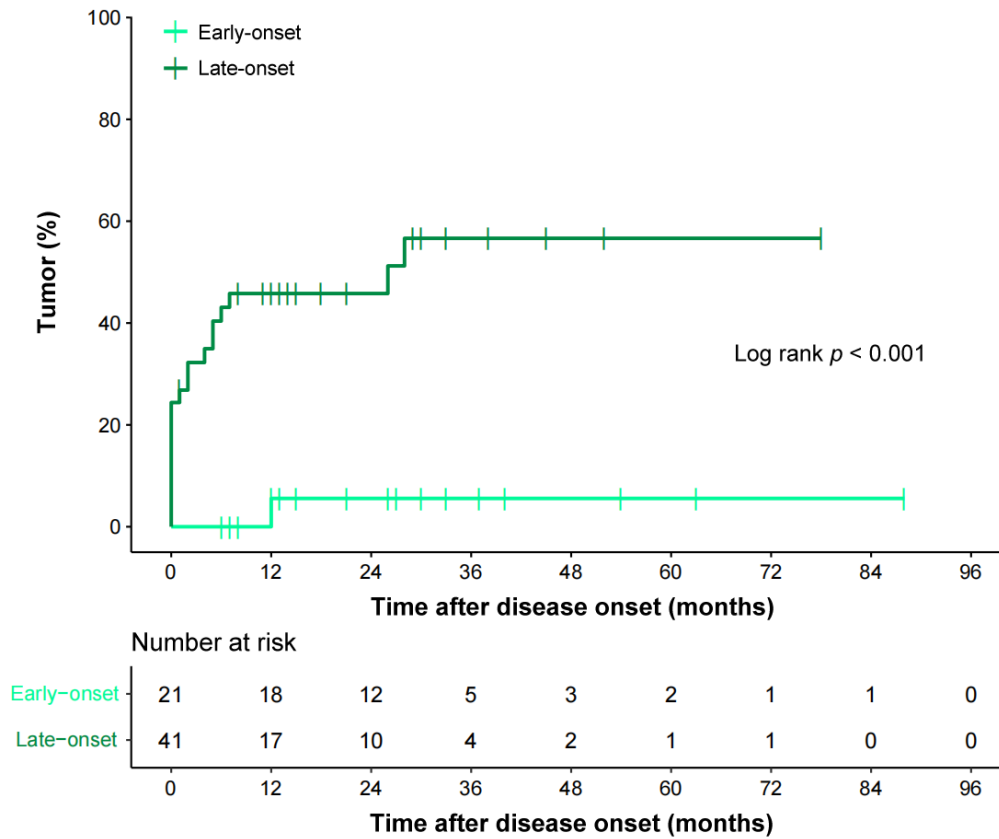


Late-onset anti-GABA_B receptor encephalitis: clinical characteristics and outcomes differing from early-onset patients

Supplemental materials



eFigure 1 Kaplan-Meier curves for the discovery of tumors in late- and early-onset groups.

eTable 1 Distribution of tumors and associated treatments according to age at onset (< 50 or ≥ 50 years)

Total cohort	Total (n = 62)	Late-onset (n = 41)	Early-onset (n = 21)	χ^2 value	p value
Tumor, n (%)	21 (33.9)	20 (48.8)	1 (4.8)	12.013	0.001**
Small-cell lung cancer	11 (17.7)	10 (24.4)	1 (4.8)	3.666	0.080
Lung adenocarcinoma <i>in situ</i>	1 (1.6)	1 (2.4)	0 (0)	0.521	1.000
Lung cancer with unknown type	2 (3.2)	2 (4.9)	0 (0)	1.059	0.545
Lung cancer diagnosed by CT	3 (4.8)	3 (7.3)	0 (0)	1.615	0.545
Gastric cancer	1 (1.6)	1 (2.4)	0 (0)	0.521	1.000
Esophageal cancer	1 (1.6)	1 (2.4)	0 (0)	0.521	1.000
laryngeal cancer	1 (1.6)	1 (2.4)	0 (0)	0.521	1.000
Epithelioid hemangioendothelioma	1 (1.6)	1 (2.4)	0 (0)	0.521	1.000
Cohort with tumors	Total (n = 21)	Late-onset (n = 20)	Early-onset (n = 1)	χ^2 value	p value
Treatment, n (%)	14 (66.7)	13 (65.0)	1 (100.0)	0.525	1.000
Chemotherapy	11 (52.4)	10 (50.0)	1 (100.0)	0.955	1.000
Surgical resection	5 (23.8)	5 (25.0)	0 (0)	0.328	1.000
Radiotherapy	3 (14.3)	3 (15.0)	0 (0)	0.175	1.000

** $p < 0.01$.

Abbreviations: CT = computed tomography.

Early-onset was defined as an onset age < 50 years, and late-onset was defined as an onset age ≥ 50 years.