

SUPPLEMENTARY MATERIALS FOR:

**Baseline Resting-State Functional Connectivity Determines Subsequent Pain Ratings
to a Tonic Ecologically Valid Experimental Model of Orofacial Pain**

Abbreviated title: Baseline rsFC Determines Subsequent Pain Ratings

Lizabeth J. Ayoub^{1,2,3}, Mary Pat McAndrews^{2,4}, Alexander J. Barnett⁵, Ka Chun Jeremy Ho¹, Iacopo Cioffi^{1,3,6}, Massieh Moayed^{1,3,6§}

¹Centre for Multimodal Sensorimotor and Pain Research, Faculty of Dentistry, University of Toronto, Toronto, ON, Canada, M5G 1E2;

²Division of Clinical and Computational Neuroscience, Krembil Brain Institute, Toronto Western Hospital, University Health Network, Toronto, ON, Canada, M5T 2S8;

³University of Toronto Centre for the Study of Pain, Toronto, ON, Canada, M5T 1P8;

⁴Department of Psychology, University of Toronto, Toronto, ON, Canada, M5S 3G3;

⁵Center for Neuroscience, University of California at Davis, Davis, California, USA;

⁶Department of Dentistry, Mount Sinai Hospital, Toronto, ON, Canada, M5G 1X5.

§Please address all correspondence to:

Massieh Moayed, PhD

Centre for Multimodal Sensorimotor and Pain Research

Faculty of Dentistry - University of Toronto

123 Edward Street, Room 501B

Toronto, ON

M5G 1E2

Email: m.moayed@utoronto.ca

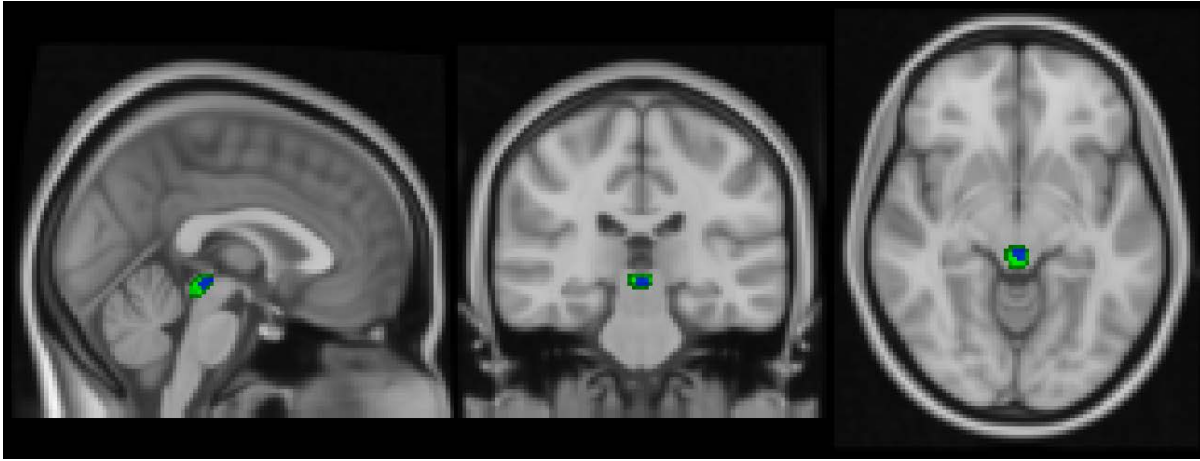


Fig. S1 Periaqueductal gray seed. The structural boundaries of the periaqueductal gray (PAG) were traced using the Duvernoy Atlas (in green). The overlap between the functional localizer and the structural seed was used in our analysis (in blue).

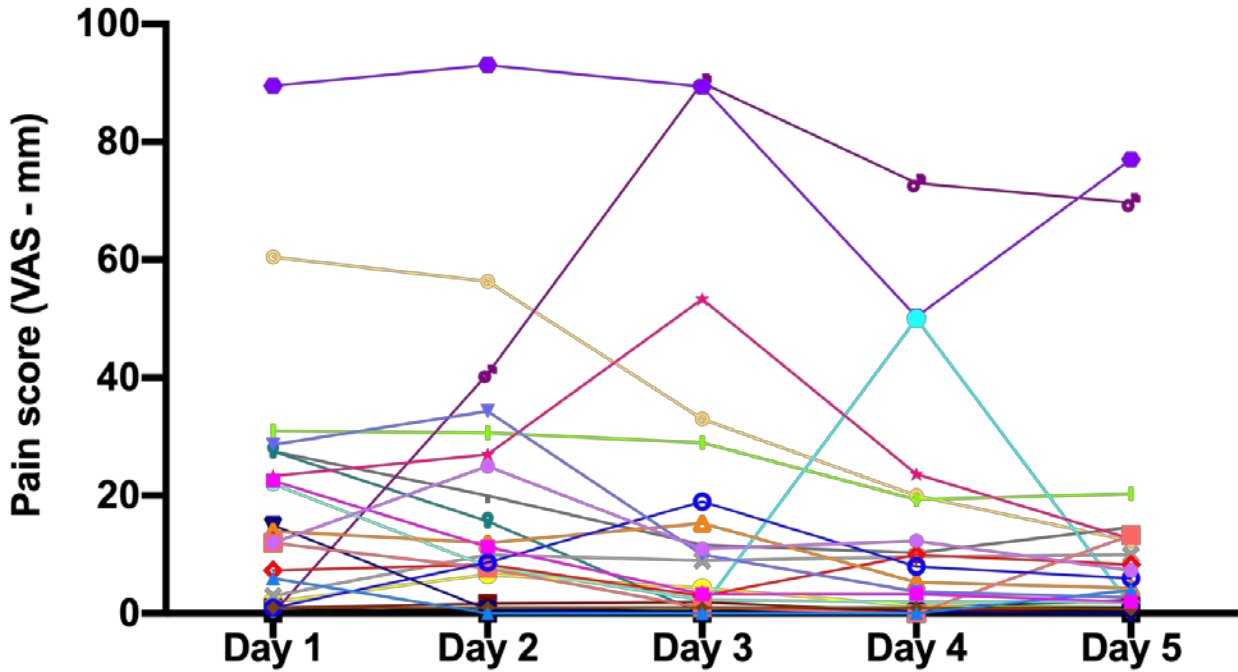


Fig. S2. Individual daily pain ratings Self-report pain ratings are represented following the insertion of the orthodontic separator over the course of five days for each participant (n=26). Participants reported their pain three times daily on a 100-mm visual analogue scale (VAS), and the average of these three ratings was used as a daily pain rating.